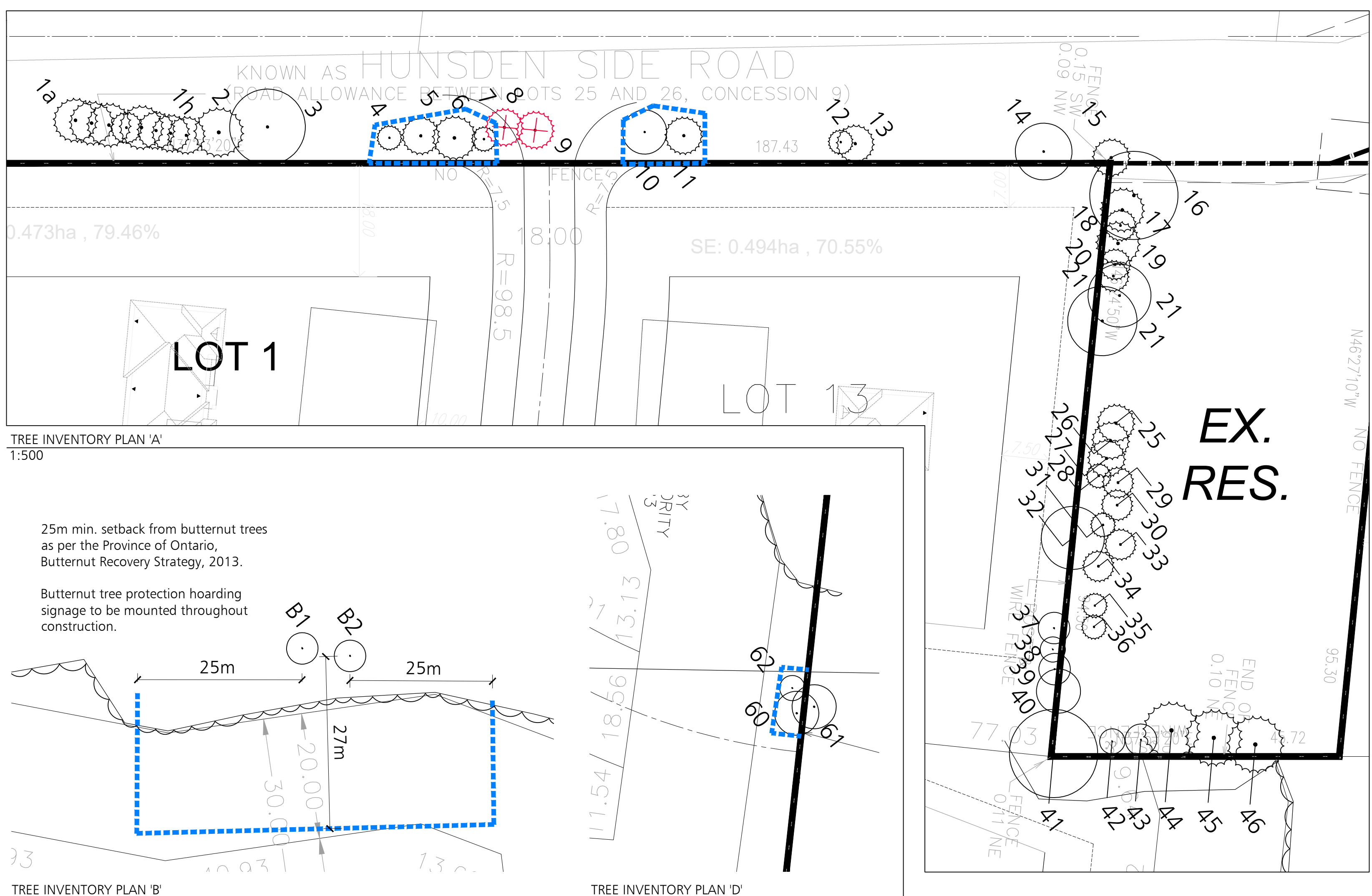


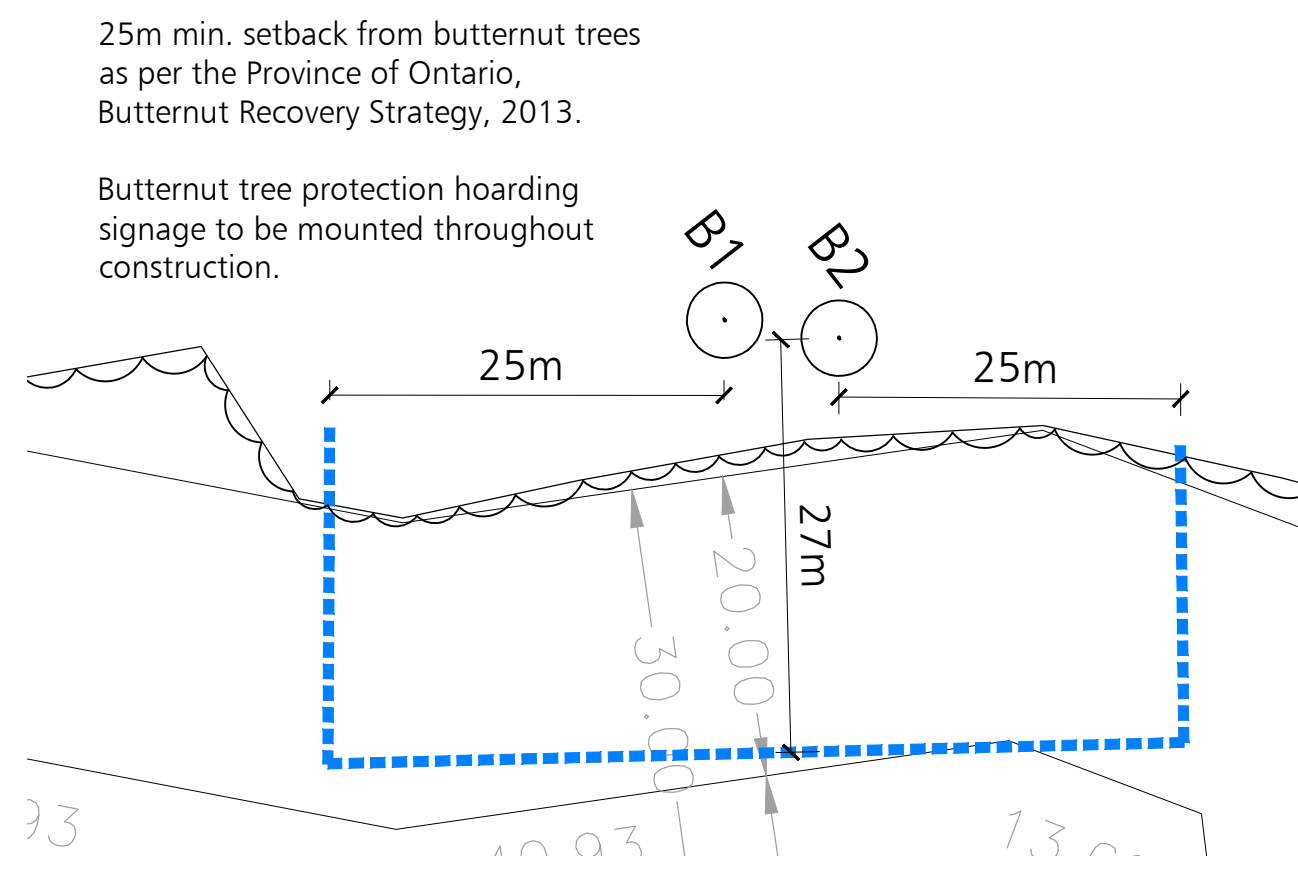
TREE INVENTORY PLAN 'C'
1:500



TREE INVENTORY PLAN 'A'
1:500

TREE INVENTORY PLAN 'B'
1:500

TREE INVENTORY PLAN 'D'
1:500



25m min. setback from butternut trees as per the Province of Ontario, Butternut Recovery Strategy, 2013.

Butternut tree protection signage to be mounted throughout construction.

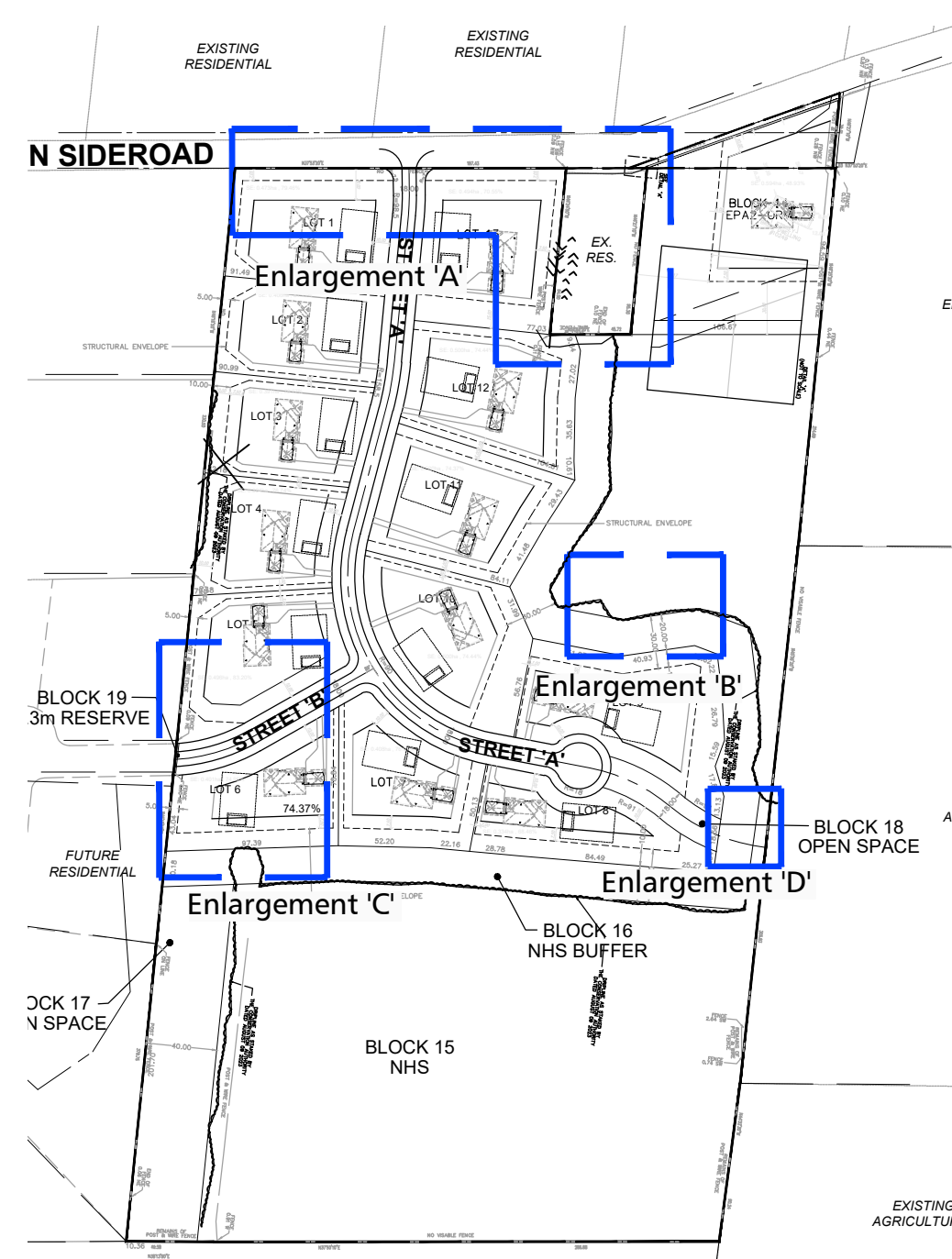
ID	Species	DBH (cm)	Canopy diameter (m)	Biological Health	Structural Condition	Recommended Action	Comments	Location
1a	Pinus sylvestris (Scots Pine)	33	7	H	MH	P	Multibranch node and backfilled.	M
1b	Pinus sylvestris (Scots Pine)	21	7	H	H	P	Backfilled.	M
1c	Pinus sylvestris (Scots Pine)	24	7	H	H	P	Backfilled.	M
1d	Pinus sylvestris (Scots Pine)	15, 14	5	H	M	P	Multi-leader with included bark from 0.15m-0.3m ht. and backfilled.	M
1e	Pinus sylvestris (Scots Pine)	26	7	H	H	P	Backfilled.	M
1f	Pinus sylvestris (Scots Pine)	22	6	H	H	P	Backfilled.	M
1g	Pinus sylvestris (Scots Pine)	20	6	H	H	P	Backfilled.	M
1h	Pinus sylvestris (Scots Pine)	22.5	6	H	H	P	Backfilled.	M
2	Picea glauca (White Spruce)	44	8	M	H	P	Branch tips with dieback of 30% of canopy.	M
3	Acer negundo (Manitoba Maple)	41, 33, 31	12	M	M	P	Three leaders, approx. 20 medium-sized dead branches, emerging included bark at the main union.	M
4	Pinus sylvestris (Scots Pine)	-15	6	D	D	P	Dead.	M
5	Pinus sylvestris (Scots Pine)	29	6	H	H	P	Backfilled.	M
6	Pinus sylvestris (Scots Pine)	39	7	H	M	P	Large limb of 15cm dia. Torn off with ripping wound, co-dominant leaders, and backfilled.	M
7	Pinus sylvestris (Scots Pine)	21	4	ML	M	P	Backfilled, canopy 60% dead.	M
8	Pinus sylvestris (Scots Pine)	21.5, 25	6	H	M	RC	Co-dominant leaders with included bark (10cm length), backfilled, medium branch fused with 2 leaders.	M
9	Pinus sylvestris (Scots Pine)	32	6	H	MH	RC	Large broken limb, branch stubs with ripping wound.	M
10	Acer negundo (Manitoba Maple)	25.5	7	H	M	P	Multiple limbs cut at base.	M
11	Pinus sylvestris (Scots Pine)	31.5	6	MH	H	P	Some defoliation on twigs, 1 limb broken at branch collar.	M
12	Pinus sylvestris (Scots Pine)	21	4	ML	ML	P	Unbalanced canopy to west, zig zag branch from on leader. Wound on leader with 30% trunk circumference.	M
13	Pinus sylvestris (Scots Pine)	29.5	6	H	MH	P	Co-dominant leaders.	M
14	Pinus sylvestris (Scots Pine)	46	9	H	M	P	Co-dominant leaders with included bark from 4m to 5.5m ht.	M
15	Pinus sylvestris (Scots Pine)	17	5	M	M	P	Multiple leaders from 2m ht., included bark at 6m ht. Has wrap on trunk for pest.	M
16	Acer saccharinum (Silver Maple)	-70	14	MH	M	P		N

ID	Species	DBH (cm)	Canopy diameter (m)	Biological Health	Structural Condition	Recommended Action	Comments	Location
17	Pinus nigra (Austrian Pine)	-45	7	M	M	P	Co-dominant leaders from 6m ht. with medium sized branch fused between them and browning foliage. Has wrap on trunk for pest.	N
18	Pinus nigra (Austrian Pine)	-30	5	M	M	P	Unbalanced canopy to west and browning foliage. Has wrap on trunk for pest.	N
19	Pinus nigra (Austrian Pine)	-50	7	MH	H	P	Browning foliage and has wrap on trunk for pest.	N
20	Picea glauca (White Spruce)	-25	5	H	H	P	Has wrap on trunk for pest.	N
21	Picea glauca (White Spruce)	-25	5	MH	H	P	Suppressed branches at 10-15m from #22 but top is in leaf. Has wrap on trunk for pest.	N
22	Elaeagnus angustifolius (Russian Olive)	-25, -20	10	ML	M	P	Co-dominant, limb/trunk leans 45o to east and to west, slower canopy has a lot of dieback (50%).	N
23	Elaeagnus angustifolius (Russian Olive)	-45, -25	11	M	M	P	Fusing branch on trunk, 3 leaders, leans 45° to north and west, and grown on stone slope.	N
24	Pinus nigra (Austrian Pine)	-60	8	MH	MH	P	Co-dominant leaders, and wrap on trunk for pest.	N
25	Picea glauca (White Spruce)	-40	6	H	H	P		N
26	Picea glauca (White Spruce)	-35	6	H	H	P		N
27	Picea glauca (White Spruce)	-35	6	H	H	P		N
28	Picea glauca (White Spruce)	-20	4	H	H	P		N
29	Picea glauca (White Spruce)	-35	5	H	H	P		N
30	Picea glauca (White Spruce)	-30	5	H	H	P		N
31	Picea glauca (White Spruce)	-20	4	M	H	P	Suppressed at top 4m.	N
32	Acer negundo (Manitoba Maple)	40.5	10	H	M	P	Unbalanced canopy to west, leans 10° to west, and included bark at main union.	N
33	Picea glauca (White Spruce)	-35	5	H	H	P	Unbalanced canopy to east.	N
34	Picea glauca (White Spruce)	-30	5	H	H	P	Unbalanced canopy to southwest.	N
35	Picea glauca (White Spruce)	-20	4	H	H	P		N
36	Picea glauca (White Spruce)	-18	4	H	H	P	Has wrap on trunk for pest.	N
37	Populus tremuloides (Trembling Aspen)	20	5	ML	ML	P	Co-dominant leaders with one leader dead, remaining leader has 25% dead branches in lower canopy.	S
38	Populus tremuloides (Trembling Aspen)	18	4	MH	MH	P	Wound with rot at 0.3m ht.	S

ID	Species	DBH (cm)	Canopy diameter (m)	Biological Health	Structural Condition	Recommended Action	Comments	Location
39	Populus tremuloides (Trembling Aspen)	20	5	MH	MH	P	One leader cut at the base with fungus fruiting bodies and 20% of canopy dead particularly in lower canopy.	S
40	Populus tremuloides (Trembling Aspen)	20	7	M	ML	P	Multiple leaders with included bark at base to 0.3m ht. One leader has 75% of canopy dead 2 leaders are in satisfactory health.	N
41	Acer saccharinum (Silver Maple)	-35, x1, -30, x1, -25, x2, -20, x3, -15, x3, -10, x6	14	H	M	P	Multiple leaders with numerous points of fusing.	N
42	Picea glauca (White Spruce)	-20	4	M	M	P	Leader with dieback and new leader emerging.	N
43	Picea glauca (White Spruce)	-15	5	H	H	P		N
44	Acer platanoides (Norway Maple)	-45	9	H	H	P		N
45	Acer platanoides (Norway Maple)	-25	9	H	M	P	Co-dominant leader and included bark.	N
46	Acer platanoides (Norway Maple)	-50	9	H	H	P		N
47	Tilia americana (Basswood)	52, 28	10	H	M	P	Three leaders with included bark.	S
48	Acer saccharum (Sugar Maple)	48	8	H	MH	P	Unbalanced canopy to northwest.	S
49	Acer saccharum (Sugar Maple)	25, 67	12	MH	M	RC	Co-dominant leaders with included bark. The smaller leader is hollow with wound of 25% trunk circumference and main leader leans 10° to south.	S
50	Acer saccharum (Sugar Maple)	65	9	MH	M	RC	Co-dominant leaders, with included bark at base to 4m ht and larger trunk has fallen.	S
51	Acer saccharum (Sugar Maple)	60, 51	12	M	ML	RC	One (1) leader is dead and 2 leaders remain with included bark between, a wound of 50% trunk circumference and a few large dead branches.	S
52	Prunus serotina (Black Cherry)	52	11	MH	MH	RC	Approximately 5 large dead branches.	S

ID	Species	DBH (cm)	Canopy diameter (m)	Biological Health	Structural Condition	Recommended Action	Comments	Location
53	Tilia americana (Basswood)	54, 57	10	ML	ML	RC	One (1) leader remains with five (5) large broken or fallen trunk and four (4) large dead branches.	S
54	Ostrya virginiana (Ironwood)	28, 27	8	H	H	RC	Co-dominant leaders with included bark.	S
55	Ostrya virginiana (Ironwood)	31, 30	8	H	M	P		S
56	Ostrya virginiana (Ironwood)	35	10	H	H	P		S
57	Fraxinus sp. (Ash)	-30, x4	6	D	D	R	Dead	S
58	Tilia americana (Basswood)	24	6	H	H	P		S
59	Fraxinus sp. (Ash)	65	10	L	L	R	Dying, 50% canopy is dead. Canopy is 50% dead, multiple leaders, and a large wound on trunk of 50% circumference.	S
60	Crataegus monogyna (European Hawthorn)	25, 25, 30	7	M	M	P	Leader topped and resprouted.	N
61	Acer saccharum (Sugar Maple)	30	7	M	M	P	Leader topped and resprouted.	N
62	Acer saccharum (Sugar Maple)	15	4	H	H	P		S
B1	Juglans cinerea (Butternut)	13	5	MH	M	P	Has a wound of 30% of trunk circumference from a fallen tree, rot is apparent, but growth is showing at all branch tips.	S
B2	Juglans cinerea (Butternut)	18	5	H	MH	P	Fusing branch with trunk leaving wound and growth showing at all branch tips.	S

TOWN OF CALEDON
PLANNING
RECEIVED
Apr 16, 2024



KEY MAP

COMPENSATION RATIO

DIAMETER AT BREAST HEIGHT (cm)	COMPENSATION RATIO
<=10	Not Applicable
10-20	1:1
21-35	2:1
36-50	3:1
51-65	4:1
>65cm	5:1

TREE COMPENSATION TABLE - PRIVATE TREES

SIZE CATEGORIES OF TREES FOR COMPENSATION	NUMBERS OF INDIVIDUALS	NUMBERS OF TREES REQUIRED FOR PLANTING
<=10	0	0
21-35cm DBH	1	2
36-50cm DBH	0	0
51-65cm DBH	4	16
>65cm DBH	1	5
TOTAL	6	23

TREE INVENTORY LEGEND

Biological Health
H (High Quality) - Vigorous growth and desirable urban tree species with no apparent symptoms of disease or pests.
MH (Medium-High Quality) - Moderate growth of high quality urban species with minor symptoms of disease that are aesthetic only and have less than 5% dieback.
M (Medium Quality) - Moderate growth of any species with minor dieback of less than 15% of canopy and/or minor symptoms of disease or pests.
ML (Medium-Low Quality) - Low vigour, with dieback of 15% - 50% of canopy and/or major symptoms of disease or pests.
L (Low Quality) - More than 50% of the canopy is dead.

Structural Condition
H (High Quality) - No apparent defects to root crown, trunk, leader, or major limbs.
MH (Medium-High Quality) - No significant defects to root crown or trunk and minor defects to canopy including limbs.
M (Medium Quality) - Minor defects to important elements (root crown, trunk, leader, and main branch union or major limbs).
ML (Medium-Low Quality) - Major defects that suggest risk of declining to low quality within 2-10 years.
L (Low Quality) - Major defects that have an immediate risk of failure.

TREE INVENTORY LEGEND

Recommended Action
P - Preserve
R - Remove for poor condition
RC - Remove for Construction
RN - To be removed by Neighbour
R* - Remove with Neighbours Approval
R** - Remove with Town's Approval
T - Transplant

Comments
B Borer
BB Broken or hanging branches
BF Backfilled
CS Compacted soil
DB Dead branches
FFB Fungus Fruiting Bodies
G Girthing
HA Hazard
IB Included bark
*LS Lean showing direction
ZL 2L 2 leaders or codominant stems
MB Multibranch node
MS/ML Multistem
PL Pruned limbs
SU Suppressed crown
TB Torn/broken branch
%TD Percent trunk circumference that is damaged.
TH Top heavy
UB Unbalanced crown
N,S,E,W indicates weighted side of crown)
V Vine growing in tree
WB Witches broom growth
WP Woodpecker damage
WS Waterspouts
ZZ Zigzag trunk
%_D % crown is dead

LEGEND

- Property Line
- Tree protection - solid hoarding
- Existing Vegetation Grouping to Remain
- Existing tree to be preserved
- Existing tree to be removed
- Existing tree to be removed Dead, girdled or dangerous.

LIMITING CONDITIONS:
This tree inventory was derived from data gathered on the site using accepted arboricultural practices. This includes a visual examination of all above ground parts of the tree for structural defects and signs of health and vigour. All examination took place from the ground plane and no trees were cored, probed or climbed. There was also no detailed inspection of the root crown where excavation would have been required.

This inventory describes the health, structural stability and identifies potential hazards of the trees to a reasonable extent. Where dead branches or other are identified in the notes it is the owners responsibility to take action. This inventory does not provide or imply a guarantee that these trees or branches will remain standing intact. The stability of any tree or branches of a tree cannot be predicted with absolute certainty under all circumstances.

There is, likewise, no guarantee of survival for those trees to be preserved during construction but which are subject to injury. Tree preservation guidelines that are provided in this report are generally suitable for the tree as determined by the visual assessment. However, there is no guarantee that these guidelines will be followed throughout construction unless an arborist is retained for complete supervision of the site at all times. Even with complete supervision, roots in an urban environment are unpredictable. Guidelines, that suppose an even distribution of roots may not be effective in cases where roots have clustered in small areas.

The assessment in this inventory is valid only at the time of inspection.

CERTIFIED ARBORIST
ISA
Jon Woodside
ISA Certified Arborist
ON-1439A
Baker Turner Inc.

Note: All Drawings by Baker Turner inc. to be Printed in Colour.

REVISIONS

DATE	DESCRIPTION
Apr 03, 2024	Issued for Submission
Oct 26, 2022	Issued for Submission
Jun 02, 2022	Issued for Client Review

NOTE: Contractor is to check and verify all dimensions and conditions on the project, and is to immediately report any discrepancies to the landscape architect before proceeding with the work.

BTi
Landscape Architecture | Site Design
Suite 234
2010 Winston Park Drive
Oakville Ontario L6H 5R7
Tel: (289) 291-7620
email: tba@bakerturner.com

Project Title
Carringwood Homes
Hunsden Residential
10249 Hunsden Sideroad
Town of Caledon, ON
TREE INVENTORY & PROTECTION PLAN

Date Issued
April 2022

Job Number Drawn By
BTI-1631 JW, EO

Scale Checked By
1:1000 JW

Sheet Number File Number
TS.1