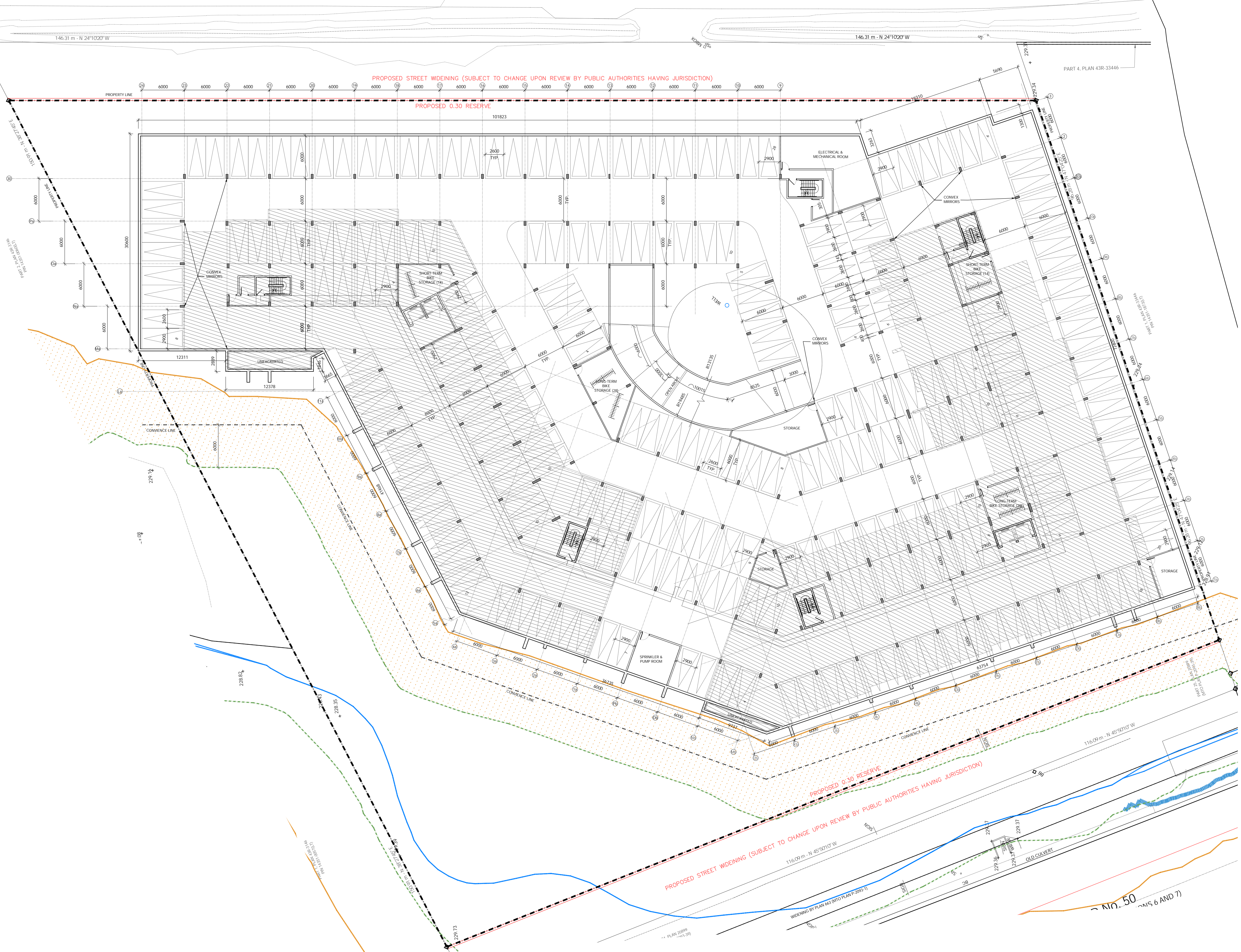


ALBION VAUGHAN ROAD
(ROAD ALLOWANCE BETWEEN TOWNSHIPS OF ALBION & VAUGHAN)
PIN 03321-0094(LT)

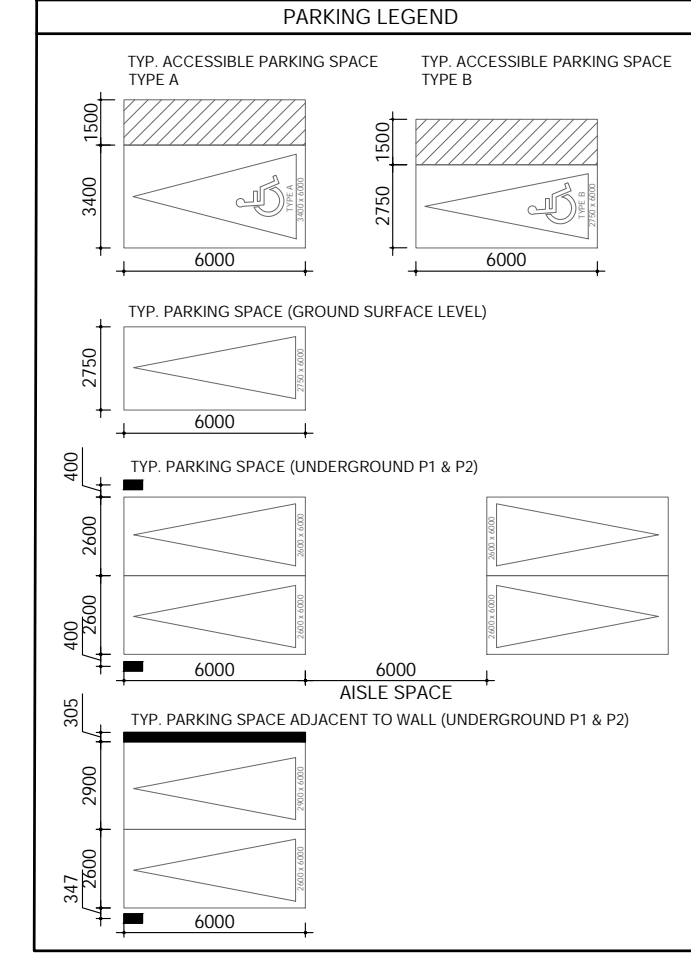
CENTRELINE OF ORIGINAL ROAD ALLOWANCE

ROAD TRAFFIC LINE

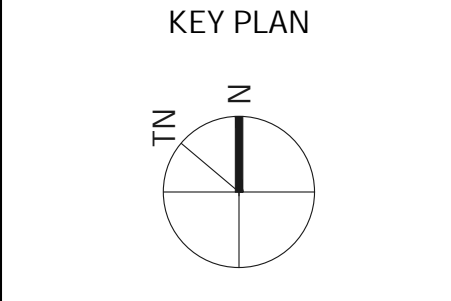
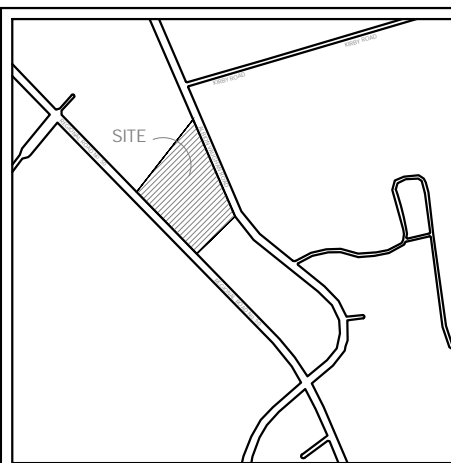


| PARKING | | | |
|---|---|--------|------------------|
| BY LAW - PARKING REQUIREMENTS | | | |
| CONDO UNITS PARKING SPACES | 1.5 PARKING SPOTS PER DWELLING UNIT | 398 | |
| VISITOR - CONDO UNITS PARKING SPACE | 0.25 PARKING SPACES PER UNIT FOR VISITOR PARKING IN A DESIGNATED VISITOR PARKING AREA | 66 | |
| ACCESSIBLE PARKING REQUIRED (2% OF TOTAL - 2) | | 11 240 | |
| GRAND TOTAL PARKING REQUIRED | | | 463 750 |
| RESIDENT (ACCESSIBLE) | RESIDENT SPOTS | TOTAL | |
| P1 LEVEL | 8 | 213 | |
| P2 LEVEL | 0 | 231 | |
| GROUND SURFACE LEVEL | 4 | 6 | |
| GRAND TOTAL PARKING PROVIDED | 12 | 450 | 442 spaces prov. |

| BICYCLE STORAGE | | | |
|-----------------------------------|-----------|------------|-------|
| | LONG TERM | SHORT TERM | TOTAL |
| GROUND SURFACE LEVEL | | 30 | |
| P1 LEVEL | 28 | 28 | |
| P2 LEVEL | 28 | 28 | |
| GRAND TOTAL BICYCLE STORAGE SPOTS | 56 | 86 | 142 |



1 P2 LEVEL - PARKING TOWER A & B
A2.1 SCALE: 1:250



TOWN OF CALEDON
PLANNING
RECEIVED
May 1, 2023

| No. | DESCRIPTION | DATE |
|-----|---------------------|------------|
| 1 | RE - ISSUED FOR SPA | 2023-03-15 |

ISSUED FOR CONSTRUCTION
ISSUED FOR BID
ISSUED FOR BUILDING PERMIT
ISSUED FOR SITE PLAN APPROVAL 2021-01-27

CONTRACTORS MUST CHECK AND VERIFY ALL DIMENSIONS AND CONDITIONS ON THE PROJECT AND MUST REPORT ANY DISCREPANCIES TO THE DESIGNER BEFORE PROCEEDING WITH CONSTRUCTION.
THIS DRAWING MUST NOT BE USED FOR CONSTRUCTION PURPOSES UNTIL SEALED AND SIGNED BY THE DESIGNER.
DO NOT SCALE DRAWINGS.

FCA
FAUSTO CORTESE ARCHITECTS
3590 RUTHERFORD RD. UNIT 7
VAUGHAN, ONTARIO, L4H 3T8
416-806-7000
FCORTESE@FCARCHITECTS.CA

PROPOSED MIX-USE CONDO DEVELOPMENT
12148 ALBION VAUGHAN RD.
BOLTON
TOWN OF CALEDON

P2 LEVEL (TOWER A & B)

| DATE | PROJECT No. |
|------------|-------------|
| 10/02/2020 | 2019-22 |

SCALE: AS NOTED
DRAWING No. A2.1