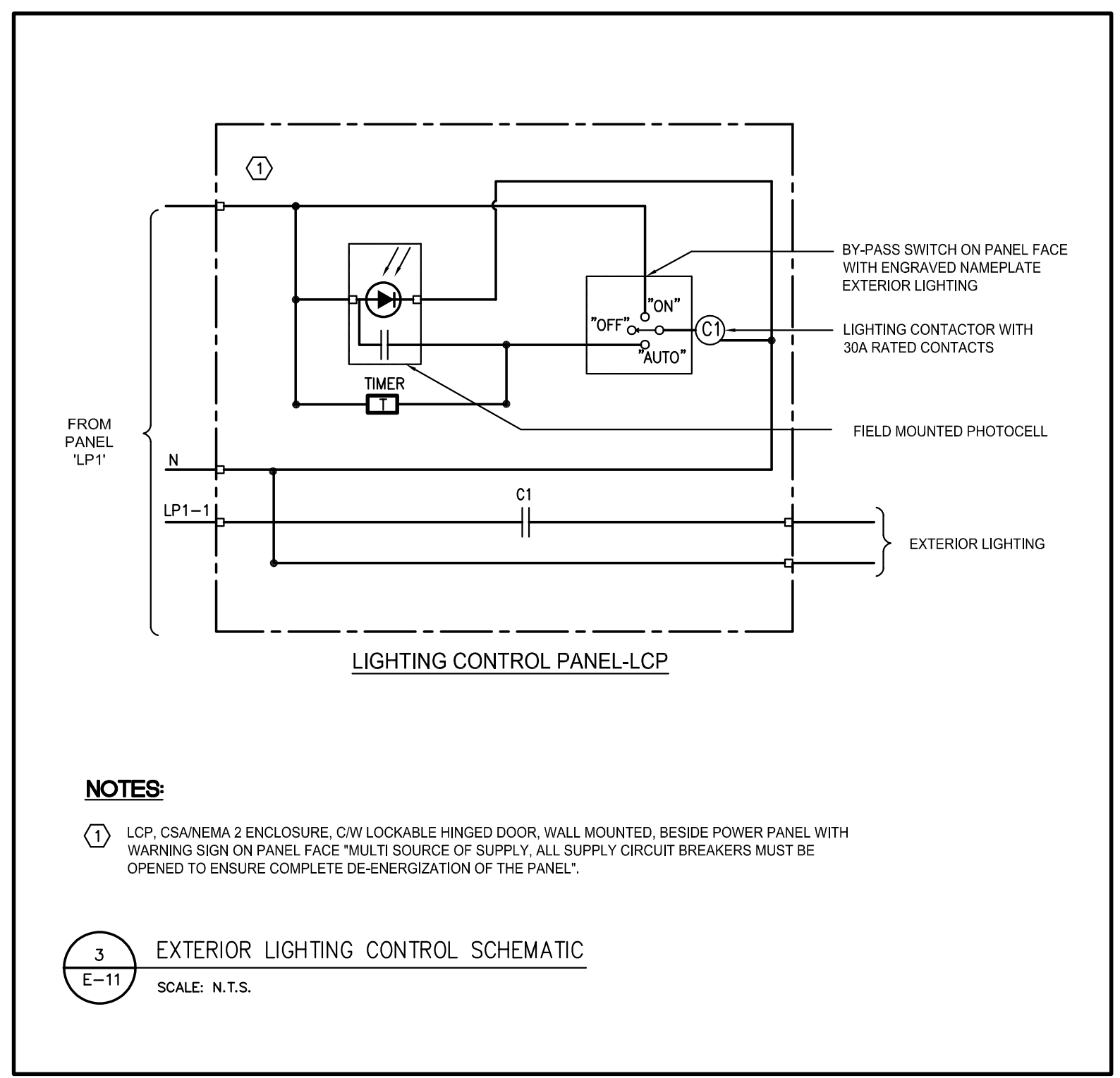
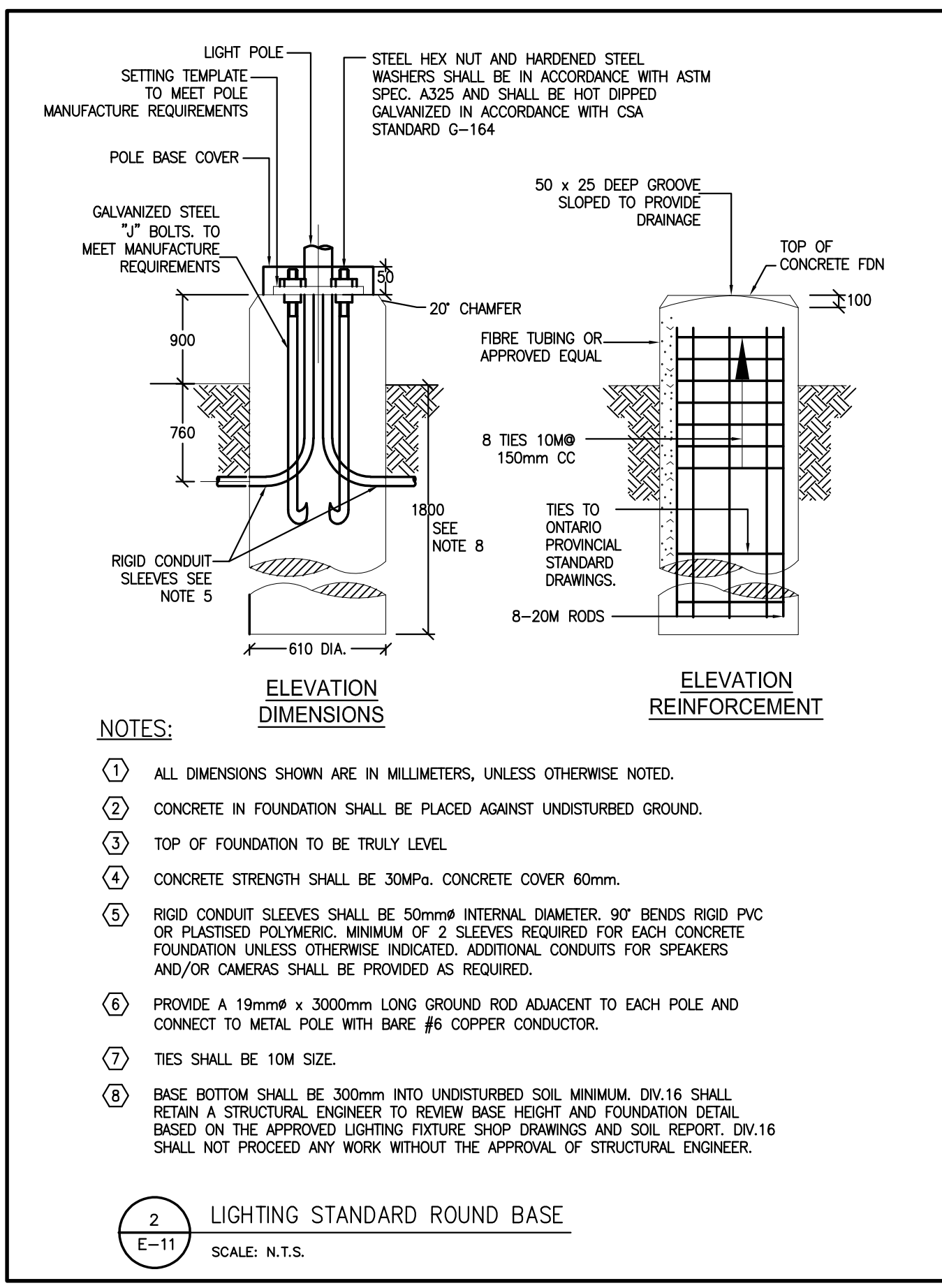


1 SITE LIGHTING LAYOUT - ELECTRICAL
SCALE: 1:400

ELECTRICAL LEGEND	
SYMBOL	DESCRIPTION
C/O	LED LUMINAIRE, CEILING MOUNTED RESPECTIVELY, LETTER DENOTES FIXTURE TYPE PER SCHEDULE
□/□	LIGHTING STANDARD WITH SINGLE OR DOUBLE HEADS
W1	LED WALL PACK, LETTER DENOTES FIXTURE TYPE PER SCHEDULE
☐	PHOTOCELL
⊗	DIRECT CONNECTION C/W DISCONNECT SWITCH
AFG	ABOVE FINISHED GRADE
WP	WEATHER PROOF
EX	DENOTES EXISTING DEVICE(S) TO REMAIN
D	DENOTES EXISTING DEVICE(S) TO BE REMOVED
N	DENOTES PROVIDE NEW DEVICE(S)
①	DENOTES DRAWING REFERENCE NOTES # 1
① E-02	DENOTES REFER TO DETAIL #1 ON DRAWING #E-02.

DRAWING LIST	
DWG. NO.	DRAWING TITLE
E-11	SITE LIGHTING LAYOUT & DETAILS- ELECTRICAL
E-12	SITE LIGHTING PHOTOMETRIC ANALYSIS & DETAILS- ELECTRICAL

LUMINAIRE SCHEDULE					
TYPE	SYMBOL	DESCRIPTION	LAMP	BALLAST	REMARKS
L1	□	EXTERIOR LED POLE LIGHT ON EXISTING POLE AT 8m AFG, C/W CLEAR FLAT GLASS LENS, TYPE 4F DISTRIBUTION, BACKLIGHT CONTROL, BLACK FINISH. APPLICATION: EXTERIOR	85W LED, 4000K, 9039 LUM	120V ELECTRONIC LED DRIVER	CURRENT LIGHTING BEACON #PAPER SERIES OR APPROVED EQUAL.
L1a	□	SAME AS FIXTURE 'L1', EXCEPT C/W TYPE 2 DISTRIBUTION. APPLICATION: EXTERIOR	85W LED, 4000K, 8812 LUM	120V ELECTRONIC LED DRIVER	CURRENT LIGHTING BEACON #PAPER SERIES OR APPROVED EQUAL.
L2	□	EXTERIOR LED POLE LIGHT, C/W CLEAR FLAT GLASS LENS, LIGHT STANDARD C/W 7m HEIGHT POLE, 1m CONCRETE BASE, TYPE 4F DISTRIBUTION, BACKLIGHT CONTROL, BLACK FINISH. APPLICATION: EXTERIOR	85W LED, 4000K, 9039 LUM	120V ELECTRONIC LED DRIVER	CURRENT LIGHTING BEACON #PAPER SERIES OR APPROVED EQUAL.
L2a	□	SAME AS FIXTURE 'L2', EXCEPT C/W TYPE 2 DISTRIBUTION. APPLICATION: EXTERIOR	85W LED, 4000K, 8812 LUM	120V ELECTRONIC LED DRIVER	CURRENT LIGHTING BEACON #PAPER SERIES OR APPROVED EQUAL.
W1	○	EXTERIOR WALL PACK, MOUNTED AT 7700mm AFF, C/W CLEAR FLAT GLASS LENS, TYPE 4 DISTRIBUTION, BLACK FINISH. APPLICATION: EXTERIOR	20.2W LED, 4000K, 2510 LUM	120V ELECTRONIC LED DRIVER	CURRENT LIGHTING EXO #SLING SERIES OR APPROVED EQUAL.
W1a	○	SAME AS FIXTURE 'W1', EXCEPT MOUNTED AT 9200mm AFF. APPLICATION: EXTERIOR	51.76W LED, 4000K, 5026 LUM	120V ELECTRONIC LED DRIVER	CURRENT LIGHTING EXO #SLING SERIES OR APPROVED EQUAL.
W2	○	EXTERIOR WALL PACK, MOUNTED AT 5500mm AFF, C/W CLEAR FLAT GLASS LENS, TYPE 4 DISTRIBUTION, BLACK FINISH. APPLICATION: EXTERIOR	38.1W LED, 4000K, 4070 LUM	120V ELECTRONIC LED DRIVER	CURRENT LIGHTING EXO #SLING SERIES OR APPROVED EQUAL.
W2a	○	SAME AS FIXTURE 'W2', EXCEPT C/W 90W LED LAMP. APPLICATION: EXTERIOR	38W LED, 4000 LUM	120V ELECTRONIC LED DRIVER	CURRENT LIGHTING EXO #SLING SERIES OR APPROVED EQUAL.
W3	○	EXTERIOR WALL PACK, MOUNTED AT 2500mm AFF, C/W CLEAR FLAT GLASS LENS, TYPE 3 DISTRIBUTION, BLACK FINISH. APPLICATION: EXTERIOR	14.9W LED, 4000K, 1880 LUM	120V ELECTRONIC LED DRIVER	BEACON LIGHTING VIPER WALL SERIES #RD1 SERIES OR APPROVED EQUAL.
W4	○	EXTERIOR WALL PACK ON EDGE OF CANOPY, ROUND SHAPE, MOUNTED AT 2500mm AFF AT CANOPY EDGE, C/W CLEAR FLAT GLASS LENS, TYPE 1W DISTRIBUTION, BLACK FINISH. APPLICATION: EXTERIOR	19.2W LED, 4000K, 2488 LUM	120V ELECTRONIC LED DRIVER	BEACON LIGHTING GEOPAK SERIES #RD1 SERIES OR APPROVED EQUAL.
C1	○	6" DIA, EXTERIOR LED DOWNLIGHT, C/W DIA CAST ALUMINUM HOUSING, HIGH PURITY ALUMINUM REFLECTOR, WIDE DISTRIBUTION, C/W CLEAR LENS, BLACK FINISH, LOWER CANOPY IS 2233mm AFG. APPLICATION: EXTERIOR CANOPY	19.5W LED LAMP, 4000K, 2552LUM	120V ELECTRONIC LED DRIVER	HUBBELL PRESCOLITE #LFR-6RD SERIES OR APPROVED EQUAL.



2	Issued for SPA	15 October 2024
1	Issued for Coordination	10 October 2024
no.	issued / revision	date

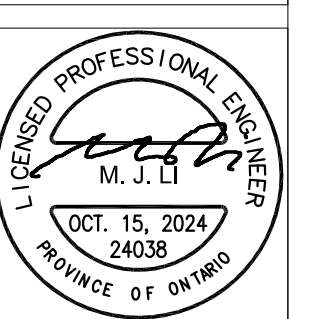
owner
EVEREST TRANSPORTATION INC.
12155 Coleraine Drive
Bolton, Ontario, L7E 3B4

project name
PROPOSED INDUSTRIAL BUILDING
12155 Coleraine Drive, Bolton, Ontario
Town of Caledon Site Plan File No. SPA-

WHEELWRIGHT GROUP INC.
ENGINEERS AND CONTRACTORS
110 FENMAR DRIVE
TORONTO, ONTARIO, M9L 1M5
TEL: (416) 741-2630 FAX: (416) 741-9859

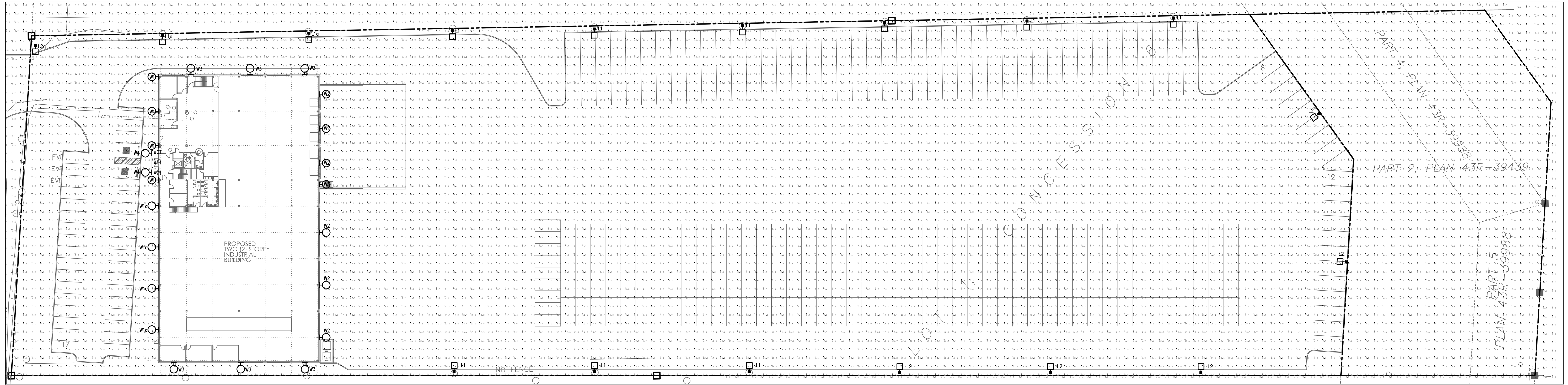
HL ENGINEERING LTD
7725 BIRCHMOUNT RD. UNIT 46, MARKHAM,
ON L3R 9X3 905-713-0003 www.hlengineering.ca

scale AS SHOWN
drawn FRL
date August 2024
checked MJL



title
SITE LIGHTING LAYOUT & DETAILS

project & drawing no.
24038
E-11



1 SITE LIGHTING PHOTOMETRIC - ELECTRICAL
E-12 SCALE: 1:400

Calculation Summary						
Label	CalcType	Units	Avg	Max	Min	Avg/Min
BP PARKING	Illuminance	Lux	54.08	91.7	21.7	2.49
DRIVERWAY AND PARKING	Illuminance	Lux	18.70	126.7	0.5	37.40
PROPERTY LINE SPILL OF LIGHT	Illuminance	Lux	0.88	63.8	0.0	N.A.
WHOLE SITE AREA	Illuminance	Lux	7.10	474.5	0.0	N.A.

no.	issued / revision	date
2	Issued for SPA	15 October 2024
1	Issued for Coordination	10 October 2024

owner
EVEREST TRANSPORTATION INC.
 12155 Coleraine Drive
 Bolton, Ontario, L7E 3B4

project name
PROPOSED INDUSTRIAL BUILDING
 12155 Coleraine Drive, Bolton, Ontario
 Town of Caledon Site Plan File No. SPA-

WHEELWRIGHT GROUP INC.
 ENGINEERS AND CONTRACTORS
 110 FENMAR DRIVE
 TORONTO, ONTARIO, M9L 1M5
 TEL: (416) 741-2639 FAX: (416) 741-9859

HL ENGINEERING LTD
 7725 BIRCHMOUNT RD. UNIT 46, MARKHAM,
 ON L3R 9X3 905-713-0003 www.hlengineering.ca

scale AS SHOWN
drawn FRL
date August 2024
checked MJL



project & drawing no.
 24038
title
 SITE LIGHTING
 PHOTOMETRIC &
 DETAILS- ELECTRICAL
E-12