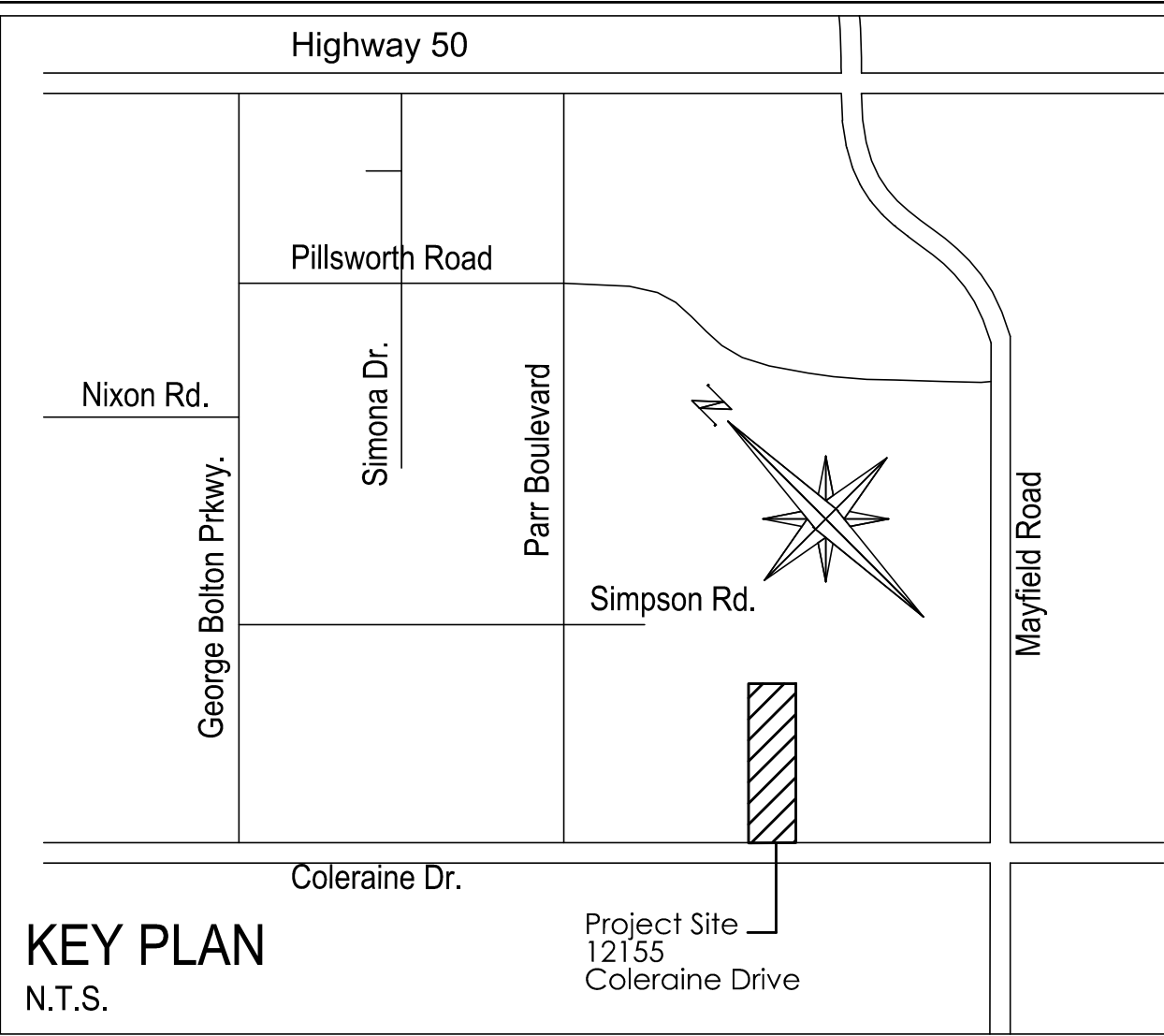


TOWN OF CALEDON
PLANNING
RECEIVED
October 17, 2024



LEGEND

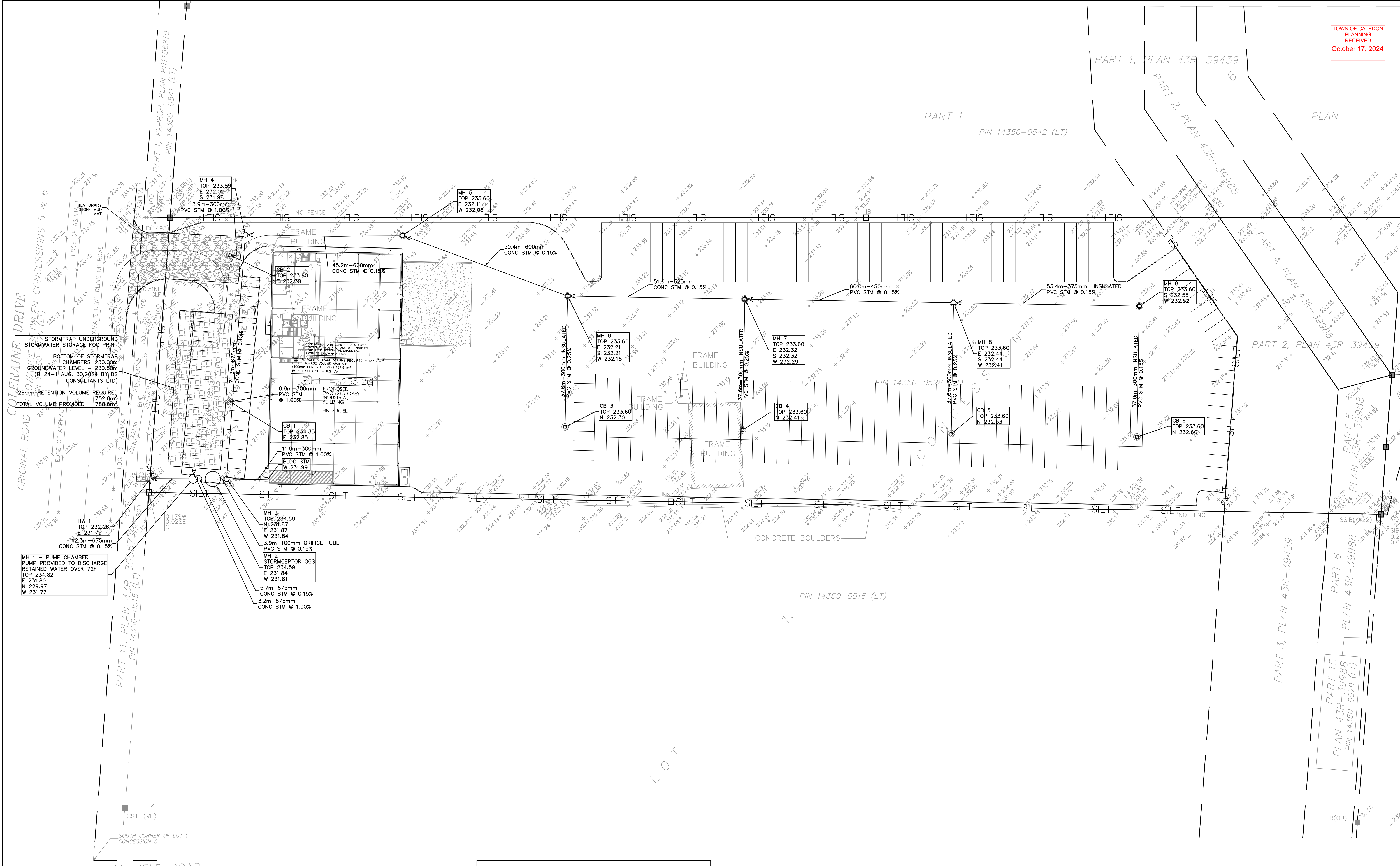
235.00	EXISTING GRADE
▽	MAN DOOR LOCATIONS
▽	OVERHEAD DOOR LOCATIONS
●	EXISTING SAN MANHOLE
○	M.H. EXISTING STM MANHOLE
□	PROPOSED CATCH BASIN
□	PROPOSED DOUBLE CATCH BASIN
○	PROPOSED CATCH BASIN MANHOLE
○	PROPOSED DOUBLE CATCH BASIN MANHOLE
●	PROPOSED SANITARY MANHOLE
○	PROPOSED STORM MANHOLE
+	FIRE HYDRANT AND VALVE
+	VALVE AND BOX
▨	STORMTRAP CHAMBERS
▨	TEMPORARY STONE MUD MAT
---	SILT FENCE
○	CATCHBASIN SEDIMENT TRAP

owner
EVEREST TRANSPORTATION INC.
12155 Coleraine Drive
Bolton, Ontario, L7E 3B4

WHEELWRIGHT GROUP INC.
ENGINEERS AND CONTRACTORS
110 FENMAR DRIVE
TORONTO, ONTARIO, M9L 1M5
TEL: (416) 741-2630
FAX: (416) 741-9059

PAVEMENT STRUCTURE DESIGN DETAILS, SPECIFICATIONS AND SUBDRAINAGE DESIGN IS NOT UNDER THE CIVIL DESIGN SCOPE. CONTRACTOR IS TO REFER TO GEOTECHNICAL REPORT RELATED SPECIFICATIONS. CONTRACTOR IS TO COORDINATE PAVEMENT MAKEUP AND SUBDRAINAGE INSPECTION WITH GEOTECHNICAL CONSULTANT.
A.M. CANDARAS ASSOCIATES INC. ASSUMES NO RESPONSIBILITY RELATING TO CONSTRUCTION AND INSPECTION OF THE PAVEMENT STRUCTURE.

CONTRACTOR TO BE RESPONSIBLE FOR VERIFYING THE LOCATIONS OF ALL EXISTING UNDERGROUND AND ABOVE UTILITIES AND SERVICES. THE CONTRACTOR SHALL ADVISE THE ENGINEER OF ANY DISCREPANCIES PRIOR TO PROCEEDING WITH CONSTRUCTION. VARIOUS UTILITIES CONCERNED TO BE GIVEN REQUIRED ADVANCED NOTICE PRIOR TO ANY DIGGING, FOR STAKE OUT.
A.M. CANDARAS ASSOCIATES INC. ASSUMES NO RESPONSIBILITY FOR THE ACCURACY OF THE LOCATION OF EXISTING UTILITIES AS INDICATED ON THIS DRAWING.



Maintenance Schedule

Stormceptor

When is inspection needed?

- Post-construction inspection is required prior to putting the Stormceptor into service.
- Routine inspections are recommended during the first year of operation to accurately assess
- inspection frequency in subsequent years is based on the maintenance plan developed in the
- first year.
- inspections should also be performed immediately after oil, fuel, or other chemical spills.

When is maintenance cleaning needed?

- If the post-construction inspection indicates presence of construction sediment of a depth
- greater than a few inches, maintenance is recommended at that time.
- For optimum performance and normal operation the unit should be cleaned out once the sediment depth reaches the recommended maintenance sediment depth, see (Recommended Sediment Depths for Maintenance Service)
- Maintain immediately after an oil, fuel, or other chemical spill.

Recommended Sediment Depths for Maintenance Service*

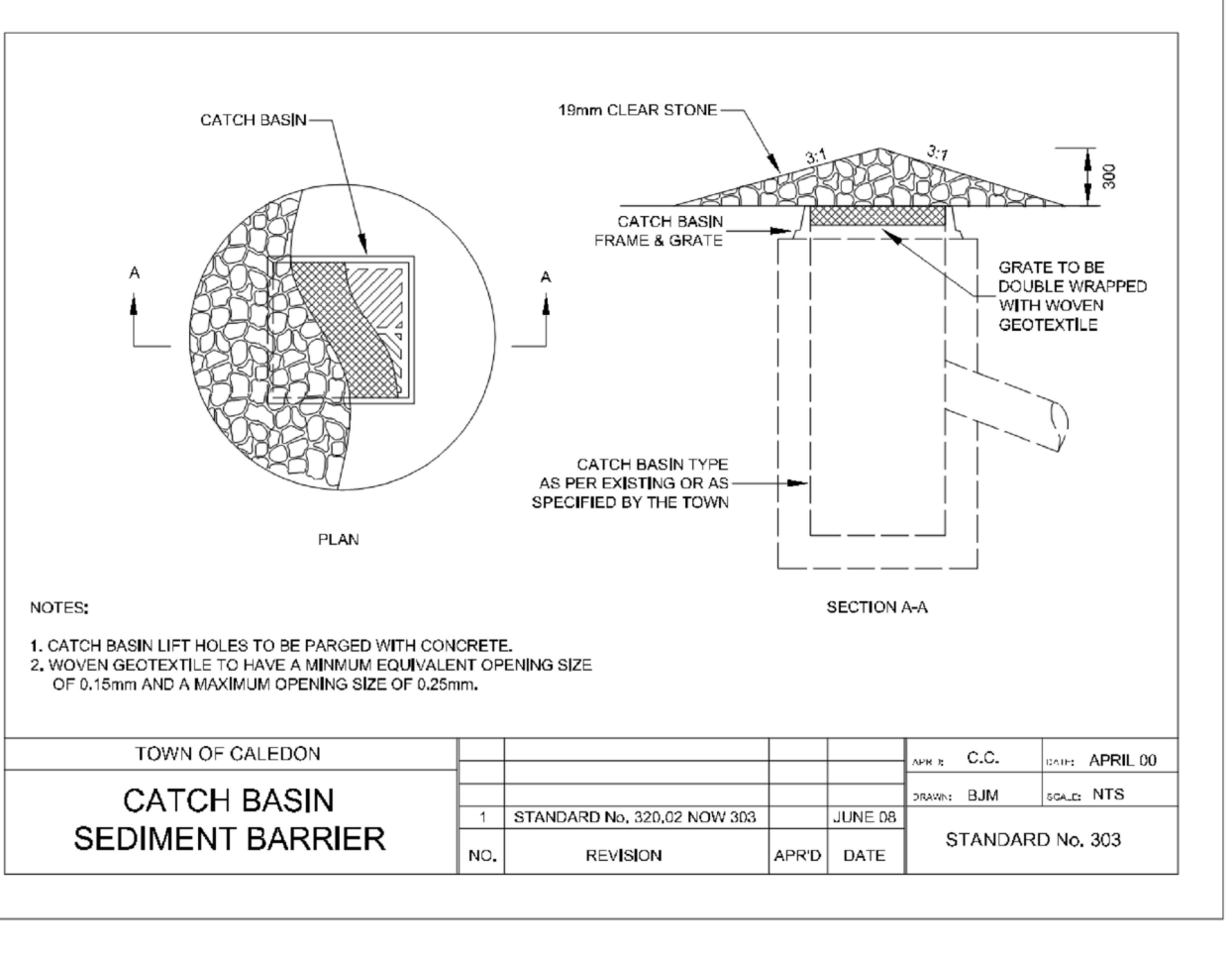
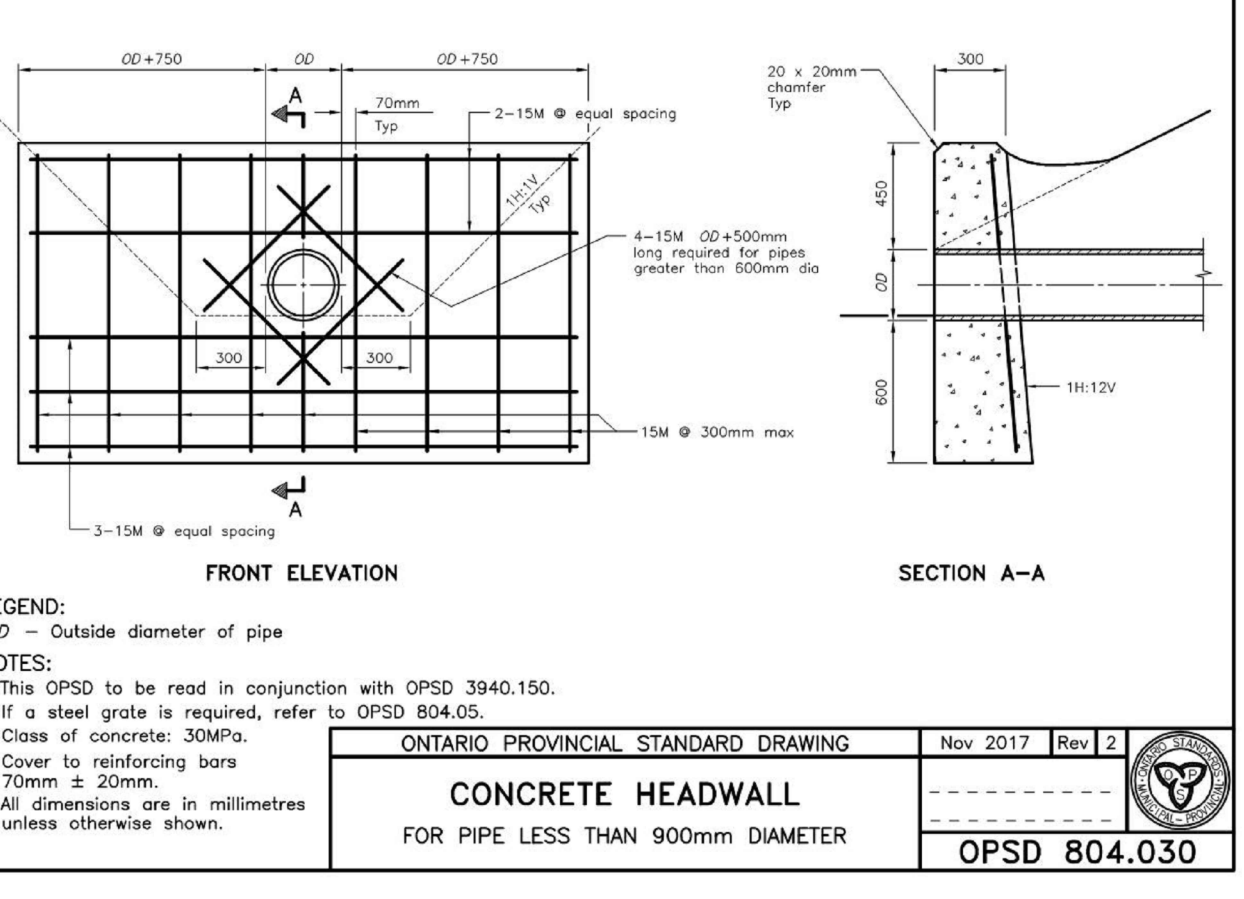
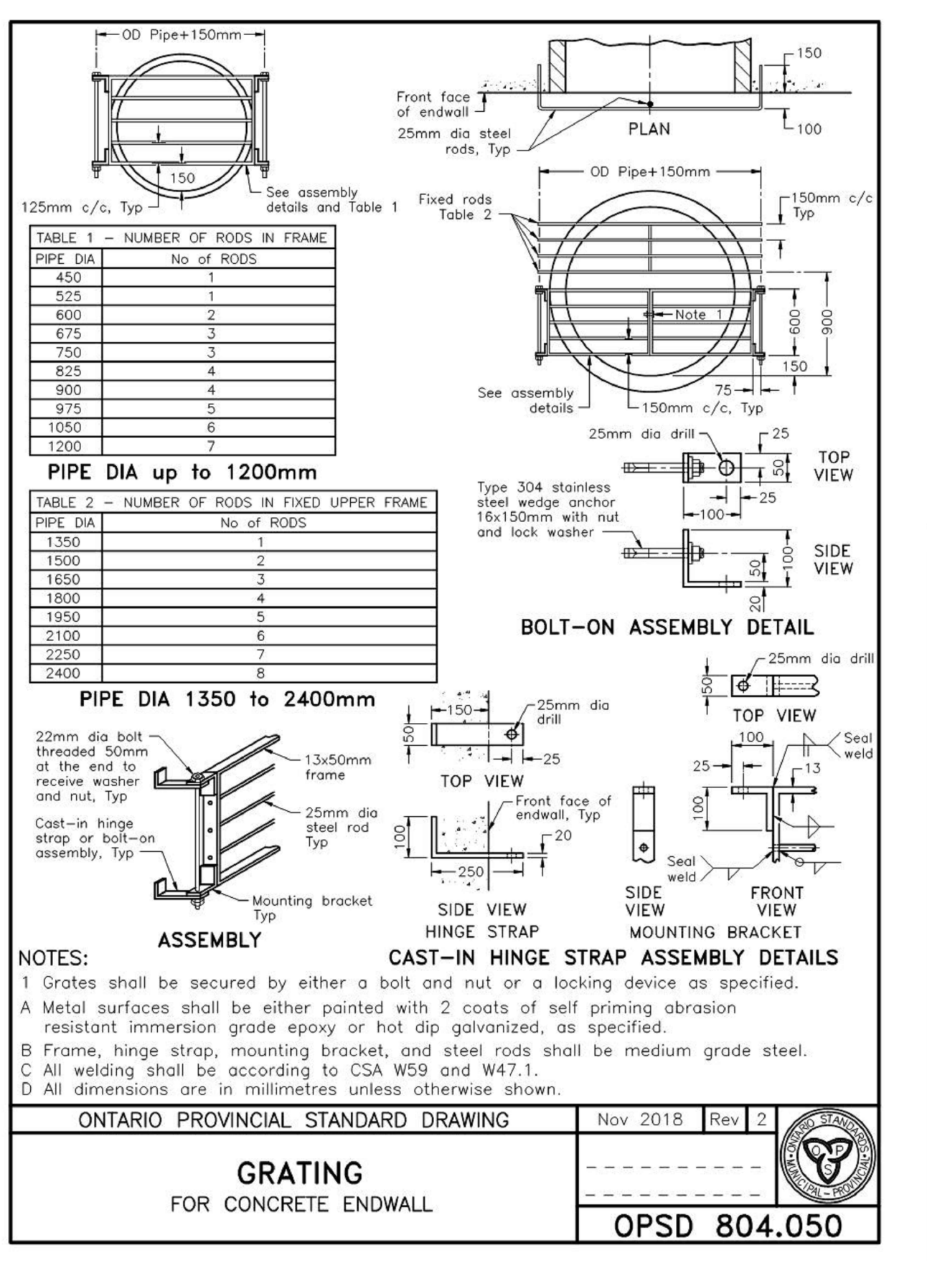
MODEL	Sediment Depth (in./mm)
EFB / EF08	24 / 610

* Based on a minimum distance of 40 inches (1,016 mm) from bottom of outlet riser to top of sediment bed

Maintenance Procedures

- Maintenance should be conducted during dry weather conditions when no rain is entering the unit.
- Stormceptor is maintained from grade through a standard surface manhole access cover or inlet grate.
- In the case of submerged or tailwater conditions, extra measures are likely required, such as plugging the inlet and outlet pipes prior to conducting maintenance.
- Inspection and maintenance of upstream catch basins and other stormwater conveyance structures is also recommended to extend the time between future maintenance cycles.
- Sediment depth inspections are performed through the Outlet Riser and oil presence can be determined through the Oil Inspection Pipe.
- Oil presence and sediment depth are determined by inserting a Sludge Judge or measuring stick to quantify the pollutant depths.
- Visually inspect the insert, weir, and drop pipe inlet opening to ensure there is no damage or blockage.
- When maintenance is required, a standard vacuum truck is used to remove the pollutants from the lower chamber of the unit through the Outlet Riser.

SEE STORMCEPTOR OF OWNER'S MANUAL FOR FURTHER DETAILS



Note: Heavy Duty erosion and sediment control during all phases of the development shall reflect the latest Town of Caledon, Conservation Authority and MCE Standards.

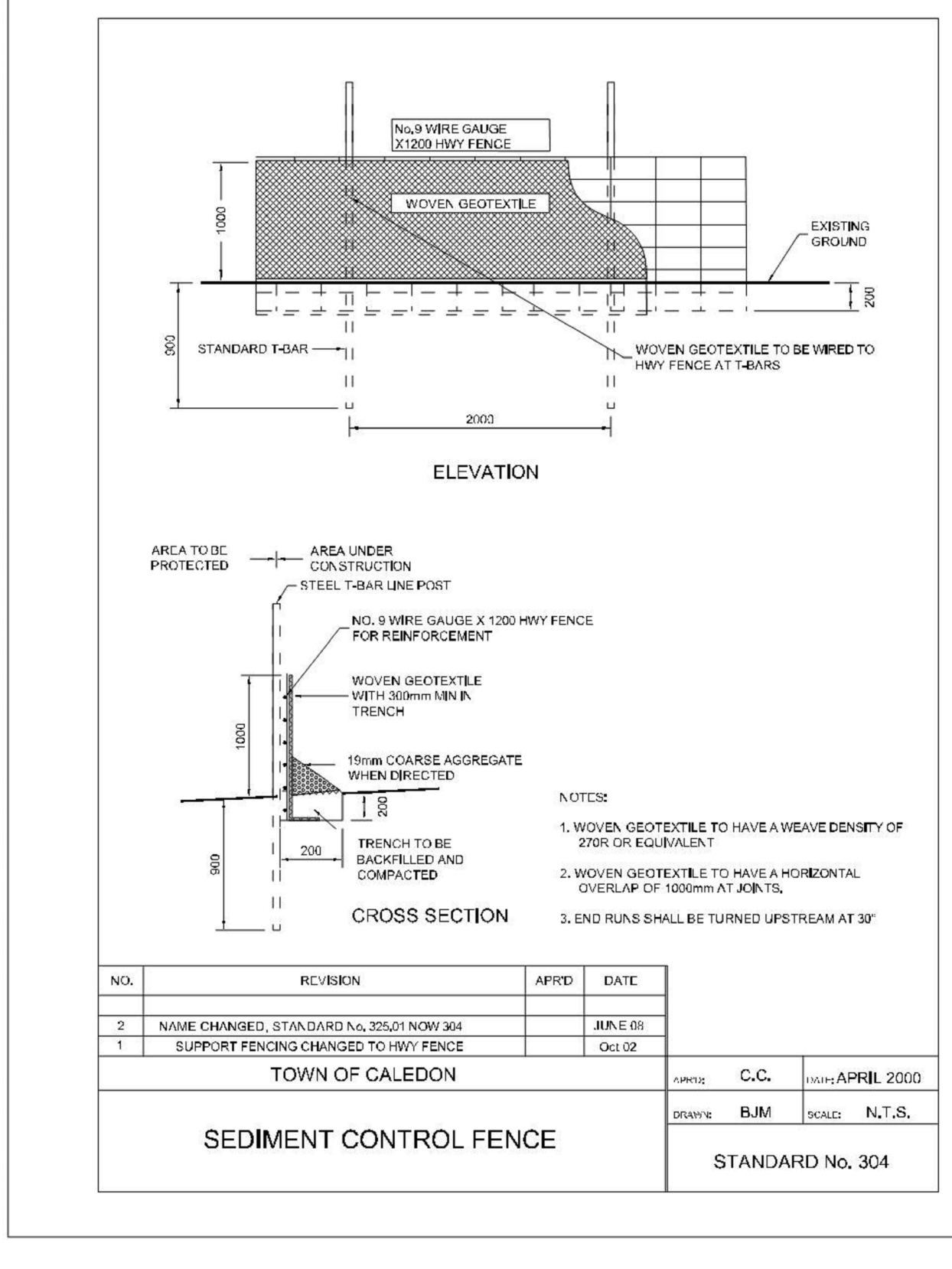
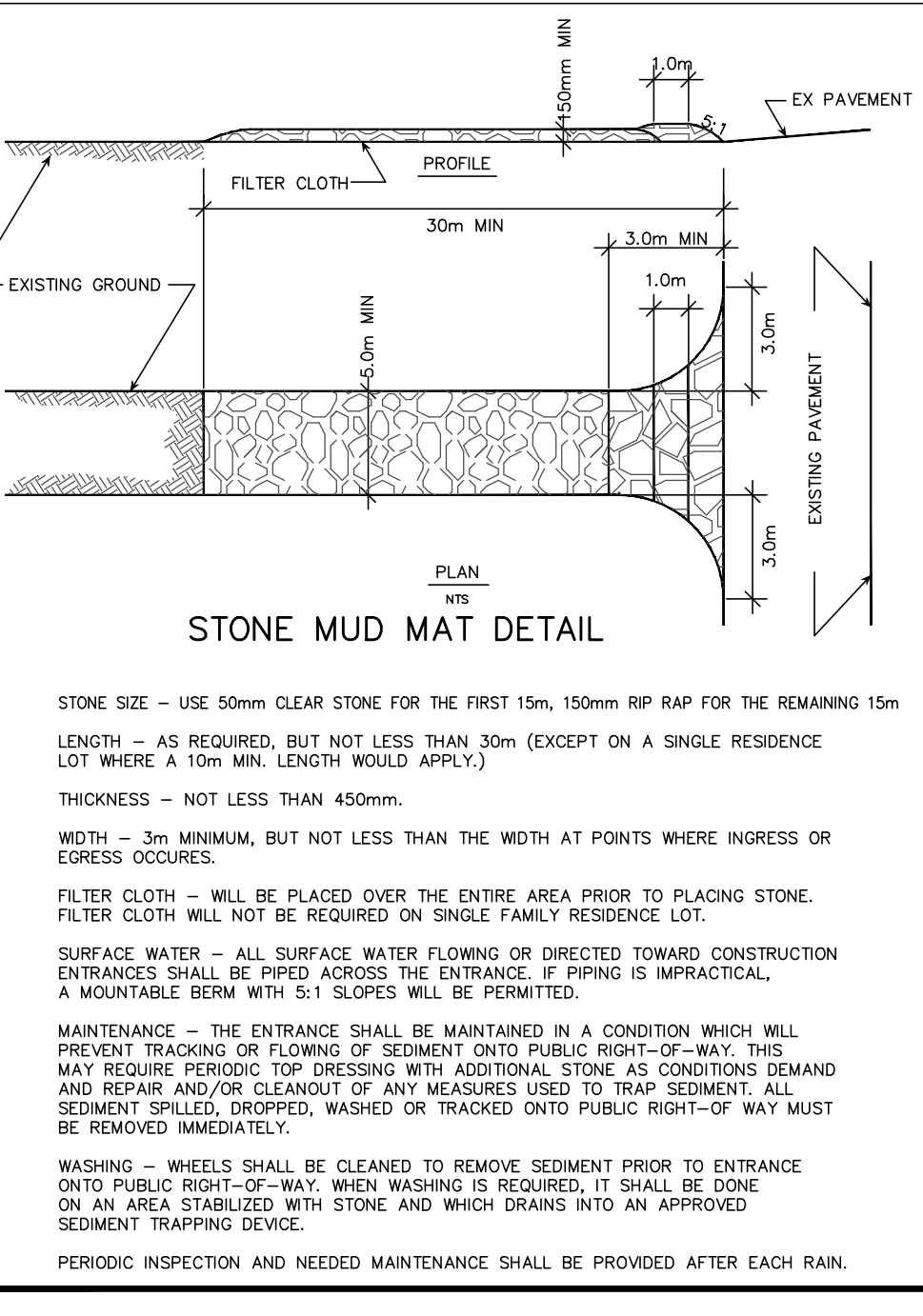
Sediment control devices are to be installed prior to any construction on the site and shall be inspected and maintained throughout the construction period to the satisfaction of the Town and the applicable conservation authority.

Note: All proposed water piping shall be isolated through a temporary connection that shall include an appropriate cross-connection control device, consistent with the degree of hazard, for backflow prevention of the active distribution system, conforming to Region of Peel standards 1-7-7 or 1-7-8. If revised drawing are required due to other agency comments, this note must be added to the drawing and the cost letter may change depending on the revisions.

Maintenance Schedule

Storm Sewer System (Annual Inspection)

- Check catchbasins and catchbasin manholes for sediment accumulation, if catchbasin sump has 8" of sediment or more orange for a vacuum truck to remove sediment build up.
- Check structures with inlets for trash/vegetation/debris 5cm deep or blocking inflow over one third (33%) of the inlet area, if so remove obstruction.
- Check upstream of orifice location for blockages or obstructions (MH3).
- Check outlet at HWI for blockages or obstructions (HWI).



No.	Date	By	REVISIONS
1	OCT 16, 24	R.P.A.	ISSUED FOR REVIEW

12155 COLERAINE DRIVE
PROPOSED INDUSTRIAL BUILDING

TOWN OF CALEDON
REGION OF PEEL

CONCEPT STORM SERVICING
& SEDIMENT AND EROSION CONTROL PLAN

SCALE: 1:400	DATE: OCT 2024	PROJ No: 2417
DRAWN: R.P.A.	CHK'D: A.M.C.	PLAN No:
DESIGNED: A.M.C.	SHEET 1 OF 1	S-1