

**TOWN OF CALEDON
PLANNING
RECEIVED**

Dec 19, 2024

ARBORIST REPORT

ARGO ALLOA (BT) CORPORATION

12455 CREDITVIEW ROAD

TOWN OF CALEDON, REGION OF PEEL

PREPARED FOR:

ARGO DEVELOPMENT CORPORATION

PREPARED BY:

C.F. CROZIER & ASSOCIATES INC.

**COLLINGWOOD, ON L9Y 3Z1
70 HURON STREET, SUITE 100**

SEPTEMBER 13, 2024

CFCA FILE NO. 0912-7136

The material in this report reflects best judgment in light of the information available at the time of preparation. Any use which a third party makes of this report, or any reliance on or decisions made based on it, are the responsibilities of such third parties. C.F. Crozier & Associates Inc. accepts no responsibility for damages, if any, suffered by any third party as a result of decisions made or actions based on this report.



Revision Number	Date	Comments
Rev. 0	September 13, 2024	Issued for 1 st Submission

TABLE OF CONTENTS

1.0	INTRODUCTION	1
2.0	METHODOLOGY.....	1
3.0	SUMMARY OF TREES INVENTORIED	2
3.1	Development Impacts/Tree Removal	2
3.2	Tree Retention and Protection	2
4.0	COMPENSATION PLANTINGS	4
5.0	SUMMARY AND RECOMMENDATIONS.....	5

LIST OF APPENDICES

- Appendix 1:** Tree Inventory and Assessment Table
- Appendix 2:** Overall Site Photos
- Appendix 3:** Tree Preservation Plan

1.0 Introduction

C.F. Crozier & Associates Inc. were retained to provide a tree inventory and assessment of existing trees within the property of the address 12455 Creditview Road as they pertain to the Town of Caledon and Region of Peel tree By-laws and Tree Preservation & Protection Standards. The site is comprised of an old 2-storey brick farmhouse, farm fields and a woodlot. To the North, there are some residential houses and a neighbouring farm. To the East, there are fields actively being used for agricultural purposes and to the South, there are residential houses along Creditview Road and neighbouring farm fields. The proposed use of the site will be comprised of a portion of the Alloa Phase 1 lands development and contain, a channel realignment, stormwater facility and residential housing.

Field work was completed on June 21, 2024, and this report relates to the condition of the trees as observed on that date. The report is meant to describe the health and composition of the existing trees on site, the evaluation of which will inform the Tree Preservation Plan.

2.0 Methodology

The following Town of Caledon and Region of Peel policies were referred to for the purposes of completing the Arborist report and Tree Preservation Plan:

- Terms of Reference for Arborist Reports, Tree Preservation Plans and Tableland tree removal Compensation (2020)
- Town of Caledon Development Standards Manual (Version 5.0, 2019)
- Town of Caledon standard development details and notes
- Town of Caledon Woodland Conservation By-law 2000-100
- Toronto and Region Conservation Authority (TRCA) standards and guidelines
- Credit Valley Conservation Authority (CVC) standards and guidelines
- Canadian Species at Risk Act
- The Ontario Endangered Species Act
- Ministry of Natural Resources and Forestry (MNRF) Butternut Tree Registration Guide
- Migratory Birds Convention Act, 1994
- Region of Peel standards and guidelines.

Existing trees 10cm DBH and over, within and adjacent (6.0m) to the development area, were inventoried and evaluated using the criteria outlined in the Terms of Reference for Arborist Reports, Tree Preservation Plans and Tableland tree removal Compensation. The inventory was completed by an International Society of Arboriculture (ISA) Certified Arborist on June 21, 2024. The information collected during the inventory includes species name, tree ID number, DBH, general health assessment and notes on trunk and canopy conditions.

This inventory is summarized graphically in the Tree Inventory Plan (TPP-1) found in Appendix 3, which is to be read together with this report and shall form part of this report. For the purposes of this report, trees and groupings of trees are identified in terms of:

- i. Tree ID number – number assigned to the tree.
- ii. Tree species – common and botanical names provided.
- iii. Diameter breast height (DBH) – measured in cm 1.4m above existing undisturbed grade.
- iv. Crown Size – Measured as a radius in meters.
- v. Tree Protection Zones – Minimum Tree Protection Zone (mTPZ).

- vi. Arboricultural condition – condition of tree considering trunk integrity, crown structure and crown vigor.
- vii. Ownership – Private, Neighbour, Town or Shared.
- viii. Directive – recommendation to preserve, Transplant, Injure or Remove.
- ix. Comments – Additional information.

The following rating system was used in describing the arboricultural condition of the trees inventoried:

Good: Indicates a condition of vigor and no major concerns.

Fair: Indicates an adequate tree, which may have some minor issues.

Poor: Indicates declining health, poor form, or other more serious issues.

Dead: Indicates a dead tree that should be removed.

3.0 Summary of Trees Inventoried

The following section discusses the health and reason for removal/retention of the trees. Please refer to Appendix 1, for the tree inventory and assessment table, which provides further information regarding each tree and to Appendix 3, for the Tree Preservation Plan identifying the locations of each tree discussed. The tree inventory comprised of eighty-four (84) individual trees. Twenty-five (25) trees are private and within the site, thirty-eight (38) trees are shared, boundary trees, and twenty-one (21) trees are neighbour trees. General site photos can be found in Appendix 2.

3.1 Development Impacts/Tree Removal

A total of twenty-eight (28) individual trees are proposed for removal. The condition of the trees observed ranged from good to dead. Eighteen (18) of the trees proposed for removal are private, four (4) trees are shared, boundary trees, and six (6) are neighbouring trees. The reasons for the proposed removal are due to condition and impacts/conflicts with the proposed development/construction. Detailed information about each tree proposed to be removed can be found in Appendix 1, Tree Inventory and Assessment Table. Prior to the removal of any trees, all tree protection measures shall be in place to protect the trees being preserved.

Removals should occur outside of the breeding bird season (April 1 - August 1). If this is not possible, clearance with an ecologist should occur prior to construction to ensure no loss of bird nest, egg or unfledged young.

Any trees located on the property line or on the adjacent property (shared ownership/boundary trees) that are proposed to be removed, pruned or injured, will require written consent from the adjacent landowner. All correspondence is to be forwarded to the Town prior to any removals.

3.2 Tree Retention and Protection

A total of fifty-six (56) individual trees have been identified to be retained. Fifteen (15) neighbouring trees, thirty-four (34) shared boundary trees, and seven (7) private trees should be protected as the proposed development within the site, should not have negative impacts on them. Refer to Appendix 1, for more information on the inventoried trees. The minimum tree protection zones (mTPZ) have been calculated using the standard calculations developed by the ISA using the DBH and assigning a radius to it. The Town of Caledon standard detail shows the tree protection fencing to be at the dripline. Refer to table 1. For the Minimum Tree Protection Zones based on DBH. Where possible, the driplines should be respected as the tree protection zone.

Table 1: Minimum Tree Protection Zones Based on DBH

DBH (cm)	Minimum TPZ (m)
<10	1.2m
10-29	1.8m
30-40	2.4m
41-50	3.0m
51-60	3.6m
61-70	4.2m
71-80	4.8m
81-90	5.4m
91-100	6.0m
>100	6cm for each 1cm of diameter

There is a woodlot (woodlot F), and wetland (Wetland 4), at the North-East corner of the subject property. These areas have been studied in more detail as part of the Local Subwatershed Study for the Alloo Secondary Plan Area & Associated Subcatchments report prepared by C.F. Crozier & Associates for the Alloo Landowners Group. The ELC for woodlot F has been classified as THDM2-6, Cultural Mineral thicket and a FODM5-3, Dry-fresh sugar maple oak deciduous forest. The Wetland has been classified as a SWDM3-3, Swamp Maple Mineral Deciduous Swamp Type. These classifications can be found and further detailed in the Subwatershed Report. These areas have been proposed to be retained. A 10m buffer has been proposed around the woodlot. The wetland is within the woodlot and the proposed buffer around the woodlot extends further than the wetland buffer.

As there are trees being retained the establishment of a Tree Protection Zone around them is required. The purpose of the tree protection zone is to prevent root damage, soil compaction and soil contamination during construction activities and as such workers and machinery shall not disturb or move the tree protection zone in any way. To prevent damage and access to the roots, tree protection fencing, should be installed as per the Town of Caledon Tree protection standards and details. The tree protection fencing shall be maintained in good condition for the duration of construction and shall not be removed until all construction activities have been completed. Areas within the tree protection zone shall remain undisturbed for the duration of site construction and shall not be used for the storage of excavated fill, building/construction material, structures or equipment.

Minor grading works may be permitted at the edge of the preservation zone as required to correct localized grading issues adjacent to the proposed development at the discretion of the Town. This work is to be undertaken under the supervision of the consulting Arborist. The consulting Arborist is to verify in writing to the Town, confirming that the work has been completed as per the approved design using best arboricultural practices. The limit of tree protection hoarding shall be confirmed in the field by the consulting arborist, Town staff and conservation authority (if applicable). The Owner/Applicant shall be responsible for ongoing maintenance and repairs to tree protection fencing to the satisfaction of the Town, until final approval by the Town and conservation authority (if applicable). The Owner/Applicant shall not remove and not cause or permit any tree preservation fencing to be removed without the approval of the Town and conservation authority (if applicable).

Due to the location of the trees to be retained, root pruning should not be required. In the event that any root pruning, be required to accommodate development, it is to be completed by a qualified arborist or tree care professional and must be performed in accordance with good arboricultural practices and the area backfilled with appropriate material to maintain

moisture/prevent desiccation. If large roots are encountered, the construction manager should notify the Landscape Architect or Arborist immediately, to ensure proper practices are followed.

For management and quality assurance, before, during and post construction a Landscape Architect or certified Arborist (I.S.A.) should make periodic visits to ensure tree protection measures are being followed.

- Prior to construction: Tree protection fencing should be in place in accordance with the Town standards. The Landscape Architect or Arborist should be given 48-hour notice of the installation of the tree protection fencing to be able to conduct a site review to confirm that the control measures are in place.
- During construction and prior to final approval by the Town, the consulting Arborist along with appropriate Town staff shall intermittently inspect the entire site. Any noted hazardous trees must be identified and removed prior to Assumption or earlier if deemed hazardous at the sole cost of the Owner/Applicant. Any records of maintenance or removals are to be submitted to the Town. Periodic site reviews are to be conducted to ensure that the tree protection fencing is in good condition and the control measures are being followed. Any root pruning or canopy trimming must be observed by a certified arborist.
- Post construction: Tree protection fencing should be removed and any additional measures to maintain tree health post construction should be undertaken under the direction of a certified arborist.

4.0 Compensation Plantings

Compensation will be required for all tree removals at a rate as determined by the Town's Tableland Tree Removal Compensation. Tree compensation planting will be in addition to the standard required planting. In the event tree compensation cannot be accommodated for in the planting design, financial compensation shall be collected at a rate (per tree) as determined by the Town. Based on the compensation ratio, fifty-one (51) replacement trees are required to compensate for the removal of trees on the subject property. The Town of Caledon tableland compensation requirements provide a table for tree compensation numbers. Refer to table 1, for the breakdown of compensation trees. The table indicates the number of trees being removed in fair to good condition and the required compensation trees as per the requirements. Proposed compensation trees will be 60mm caliper if deciduous and 225cm height if coniferous. The species should be comprised of mostly native species and non-invasives. Landscape and restoration plans should account for the number of required compensation trees. Compensation trees will only be counted if they exceed the existing Town planting standard as currently outlined in Section 2.3 of the Development Standards Manual Version 5.0m 2019.

Table 2: Tree Removal Compensation Ratio (fair-good)

DBH (cm)	Compensation Ratio	Number of Trees Being Removed	Required Replacements
<10	Not Applicable	-	-
10-20	1:1	8	8
21-35	2:1	5	10
36-50	3:1	6	18
51-65	4:1	-	-
>65	5:1	3	15
	TOTAL:	22	51

5.0 Summary and Recommendations

In total, eighty-four (84) individual trees were inventoried and assessed. A total of twenty-eight (28) trees are proposed to be removed and fifty-six (56) are to be retained. The majority of the trees are in good to fair condition and will be compensated for with fifty-one (51) compensation trees required. The trees in poor condition will be removed due to condition. We have based our recommendations for the proposed retention of trees on the site plan drawings and the health and condition of the trees while assuming best practices during construction.

Respectfully submitted,

C.F. CROZIER & ASSOCIATES INC.

A handwritten signature in black ink that reads "Matthew Campbell". The signature is written in a cursive style with a large initial "M".

Matthew Campbell, OALA, CSLA, ISA Certified Arborist ON-3008A, TRAQ
Senior Contract Administrator

J:\900\912-Argo Development Corp\7136 - Argo Tree Preservation\Reports\Arboriculture\Argo BT\0912-7136 Argo Alloa (BT)
Corporation_Arborist Report.docx

APPENDIX 1

TREE INVENTORY & ASSESSMENT TABLE

APENDIX 1 - TREE INVENTORY ASSESSMENT TABLE

ID No.	Botanical Name	Common Name	DBH (cm) (Diameter at Breast Height)	Canopy Radius (m)	mTPZ (m) (Minimum Tree Protection)	Condition	Ownership	Directive	Comments
1	<i>Betula nigra</i>	River Birch	13	2.5	1.8	Good	Neighbour	Preserve	
2	<i>Acer saccharinum</i>	Silver Maple	15, 11	3	1.8	Fair	Shared	Preserve	Multi stem 15 & 11cm
3	<i>Acer saccharinum</i>	Silver Maple	15, 15, 15, 5	3	1.8	Fair	Shared	Preserve	Multi stem, 4 stems.
4	<i>Betula nigra</i>	River Birch	18	3	1.8	Good	Shared	Preserve	Clump form.
5	<i>Salix bebbiana</i>	Bebb's Willow	15	3	1.8	Fair	Shared	Preserve	Multi stem, more than 8 stems.
6	<i>Salix bebbiana</i>	Bebb's Willow	15	3	1.8	Fair	Shared	Preserve	Multi stem, more than 8 stems.
7	<i>Salix bebbiana</i>	Bebb's Willow	15	3	1.8	Fair	Shared	Preserve	Multi stem, 10 stems.
8	<i>Salix babylonica</i>	Weeping Willow	25	6	1.8	Fair	Neighbour	Preserve	trunk wounds at base. 2 stems both 25cm.
9	<i>Salix babylonica</i>	Weeping Willow	28	6	1.8	Fair	Neighbour	Preserve	trunk wounds at base. 3 stem 28,25,20cm
10	<i>Acer saccharinum</i>	Silver Maple	40	6	2.4	Poor	Shared	Preserve	dieback in canopy. 5 stems at the base. 40cm and under
11	<i>Acer saccharinum</i>	Silver Maple	45	6	3.0	Fair	Shared	Preserve	dieback in canopy. codominant at 1.4m
12	<i>Acer saccharinum</i>	Silver Maple	60	5	3.6	Fair	Shared	Preserve	dieback in canopy. codominant at 1.4m
13	<i>Acer saccharinum</i>	Silver Maple	40	3.5	2.4	Fair	Shared	Preserve	codominant at 1.4m.
14	<i>Acer saccharinum</i>	Silver Maple	60	6	3.6	Good	Neighbour	Preserve	
15	<i>Acer saccharum</i>	Sugar Maple	50	6	3.0	Fair	Shared	Preserve	
16	<i>Picea abies</i>	Norway spruce	30	3	2.4	Fair	Shared	Remove	boundary tree. Remove due to conflicts with development.
17	<i>Acer saccharinum</i>	Silver Maple	40	5	2.4	Fair	Shared	Remove	boundary tree. Remove due to conflicts with development.
18	<i>Acer saccharinum</i>	Silver Maple	50	6	3.0	Fair	Shared	Remove	boundary tree. Remove due to conflicts with development.
19	<i>Picea abies</i>	Norway spruce	30	3	2.4	Fair	Shared	Preserve	boundary tree
20	<i>Ulmus spp.</i>	Elm spp	18	2	1.8	Fair	Private	Remove	multi stem 15 & 10cm. Remove due to conflicts with development.
21	<i>Quercus macrocarpa</i>	Bur Oak	40	4	2.4	Fair	Shared	Remove	boundary tree. Codominant at 1.4m. Remove due to conflicts with development.
22	<i>Quercus macrocarpa</i>	Bur Oak	40	4	2.4	Fair	Private	Remove	boundary tree. Remove due to conflicts with development.
23	<i>Quercus macrocarpa</i>	Bur Oak	103	6	6.2	Poor	Private	Remove	decay and rot from base up north side of tree. boundary tree.
24	<i>Quercus macrocarpa</i>	Bur Oak	30	3	2.4	Fair	Private	Remove	boundary tree. Remove due to conflicts with development.
25	<i>Quercus macrocarpa</i>	Bur Oak	110	8	6.6	Fair	Private	Remove	boundary tree. Remove due to conflicts with development.
26	<i>Crataegus spp.</i>	Hawthorn spp.	15	2	1.8	Fair	Neighbour	Remove	Multi stem 15 & 10cm
27	<i>Fraxinus spp.</i>	Ash spp.	15-25	0		Dead	Neighbour	Preserve	Group of 13 dead ash trees on neighbouring property.
28	<i>Fraxinus spp.</i>	Ash spp.	18	0		Dead	Neighbour	Preserve	Group of 4 dead ash trees on neighbouring property.
29	<i>Acer saccharinum</i>	Silver Maple	18	3	1.8	Fair	Neighbour	Remove	Multi stem, 8 stems between 3-18cm
30	<i>Acer saccharinum</i>	Silver Maple	30	5	2.4	Fair	Neighbour	Remove	Remove due to conflict with proposed channel re-alignment
31	<i>Tilia americana</i>	Basswood	15	2	1.8	Fair	Neighbour	Remove	Multi stem, 5 stems all under 15cm.
32	<i>Fraxinus spp.</i>	Ash spp.	13	1.5	1.8	Poor	Neighbour	Remove	Evidence of emerald ash borer.
33	<i>Quercus macrocarpa</i>	Bur Oak	100	8	6.0	Poor	Neighbour	Preserve	85% canopy dead.
34	<i>Acer negundo</i>	Manitoba Maple	18	3	1.8	Fair	Neighbour	Preserve	multi stem
35	<i>Acer saccharinum</i>	Silver Maple	15	3	1.8	Fair	Private	Remove	3 clumps of at least 5stems. On edge of bank. Remove due to conflict with development.
36	<i>Acer saccharinum</i>	Silver Maple	100	9	6.0	Fair	Private	Remove	Remove due to conflict with development.
37	<i>Acer saccharinum</i>	Silver Maple	100	5	6.0	Poor	Private	Remove	Remove due to conflict with development.
38	<i>Acer freemanii</i>	Freeman maple	30	3	2.4	Fair	Private	Remove	Remove due to conflict with development.
39	<i>Acer saccharinum</i>	Silver Maple	12	2	1.8	Good	Private	Remove	Remove due to conflict with development.
40	<i>Acer saccharinum</i>	Silver Maple	100	6	6.0	Fair	Private	Remove	Remove due to conflict with development.
41	<i>Acer saccharinum</i>	Silver Maple	45	6	3.0	Fair	Private	Remove	3 stems. all 45cm. Remove due to conflict with development.
42	<i>Acer saccharinum</i>	Silver Maple	40	7	2.4	Fair	Private	Remove	multi stem clumps 10 stems. Remove due to conflict with development.
43	<i>Acer saccharinum</i>	Silver Maple	30	7	2.4	Fair	Private	Remove	Multi stem. 8 stems at base. Remove due to conflict with development.
44	<i>Acer negundo</i>	Manitoba Maple	15	3	1.8	Fair	Private	Remove	multi stem. Remove due to conflict with development.
45	<i>Acer negundo</i>	Manitoba Maple	13	2	1.8	Fair	Private	Remove	Remove due to conflict with development.
46	<i>Fraxinus spp.</i>	Ash spp.	80	0		Dead	Neighbour	Remove	dead ash
47	<i>Picea pungens</i>	Blue Spruce	40	4	2.4	Fair	Shared	Preserve	Thin canopy. One sided.
48	<i>Acer platanoides</i>	Norway Maple	50	6	3.0	Good	Shared	Preserve	
49	<i>Acer platanoides</i>	Norway maple	50	3	3.0	Fair	Shared	Preserve	
50	<i>Acer platanoides</i>	Norway Maple	50	6	3.0	Fair	Shared	Preserve	
51	<i>Populus spp.</i>	Poplar spp.	60	3	3.6	Fair	Shared	Preserve	
52	<i>Populus spp.</i>	Poplar spp.	60	3	3.6	Fair	Shared	Preserve	
53	<i>Populus spp.</i>	Poplar spp.	30	3	2.4	Fair	Shared	Preserve	
54	<i>Populus spp.</i>	Poplar spp.	30	3	2.4	Fair	Shared	Preserve	
55	<i>Populus spp.</i>	Poplar spp.	30	3	2.4	Fair	Shared	Preserve	
56	<i>Populus spp.</i>	Poplar spp.	50	4	3.0	Fair	Shared	Preserve	

APENDIX 1 - TREE INVENTORY ASSESSMENT TABLE

ID No.	Botanical Name	Common Name	DBH (cm) (Diameter at Breast Height)	Canopy Radius (m)	mTPZ (m) (Minimum Tree Protection)	Condition	Ownership	Directive	Comments
57	<i>Populus spp.</i>	Poplar spp.	60	4	3.6	Fair	Shared	Preserve	Multit stem
58	<i>Populus spp.</i>	Poplar spp.	45	3	3.0	Fair	Shared	Preserve	
59	<i>Populus spp.</i>	Poplar spp.	50	3	3.0	Fair	Shared	Preserve	
60	<i>Fraxinus spp.</i>	Ash spp.	25	0		Dead	Private	Remove	dead ash.
61	<i>Populus spp.</i>	Poplar spp.	40	3.5	2.4	Fair	Shared	Preserve	
62	<i>Populus spp.</i>	Poplar spp.	45	3.5	3.0	Fair	Shared	Preserve	
63	<i>Ulmus spp.</i>	Elm spp.	80	5	4.8	Fair	Private	Preserve	
64	<i>Populus spp.</i>	Poplar spp.	20	3	1.8	Fair	Private	Preserve	
65	<i>Tilia americana</i>	Basswood	50	5	3.0	Fair	Private	Preserve	
66	<i>Populus spp.</i>	Poplar spp.	10	2	1.8	Fair	Shared	Preserve	
67	<i>Populus spp.</i>	Poplar spp.	30	3	2.4	Fair	Private	Preserve	
68	<i>Populus spp.</i>	Poplar spp.	23	3	1.8	Fair	Private	Preserve	
69	<i>Populus spp.</i>	Poplar spp.	15	3	1.8	Fair	Private	Preserve	
70	<i>Populus spp.</i>	Poplar spp.	25	4	1.8	Fair	Shared	Preserve	
71	<i>Populus spp.</i>	Poplar spp.	22	4	1.8	Fair	Shared	Preserve	
72	<i>Pinus nigra</i>	Austrian Pine	40*	3	2.4	Fair	Neighbour	Preserve	
73	<i>Pinus nigra</i>	Austrian Pine	50*	3	3.0	Fair	Neighbour	Preserve	
74	<i>Populus spp.</i>	Poplar spp.	15	2	1.8	Fair	Private	Preserve	
75	<i>Pinus nigra</i>	Austrian Pine	40*	3	2.4	Fair	Neighbour	Preserve	
76	<i>Betula spp.</i>	Birch spp.	15	2	1.8	Fair	Shared	Preserve	
77	<i>Fraxinus spp.</i>	Ash spp.	35	0		Dead	Private	Remove	dead ash
78	<i>Pinus nigra</i>	Austrian Pine	30*	3	2.4	Fair	Neighbour	Preserve	
79	<i>Quercus macrocarpa</i>	Burr Oak	25	2	1.8	Fair	Shared	Preserve	
80	<i>Pinus nigra</i>	Austrian Pine	50*	3	3.0	Fair	Neighbour	Preserve	
81	<i>Pinus nigra</i>	Austrian Pine	50	3.5	3.0	Fair	Shared	Preserve	
82	<i>Populus spp.</i>	Poplar spp.	15	2	1.8	Fair	Shared	Preserve	
83	<i>Pinus nigra</i>	Austrian Pine	50*	4	3.0	Fair	Neighbour	Preserve	
84	<i>Pinus nigra</i>	Austrian Pine	60*	4	3.6	Fair	Neighbour	Preserve	

APPENDIX 2

OVERALL SITE PHOTOS



North-West property line with Residential Properties.



North property line looking West.



North Property line



East property line looking North towards Woodlot F.



Woodlot F from South property line



South property line looking East



South property line looking East



South property line looking West



South property line adjacent to residential Property, looking South-East.



South property line adjacent to residential Property, looking West.



South property line near SW corner



South property line at SW corner.

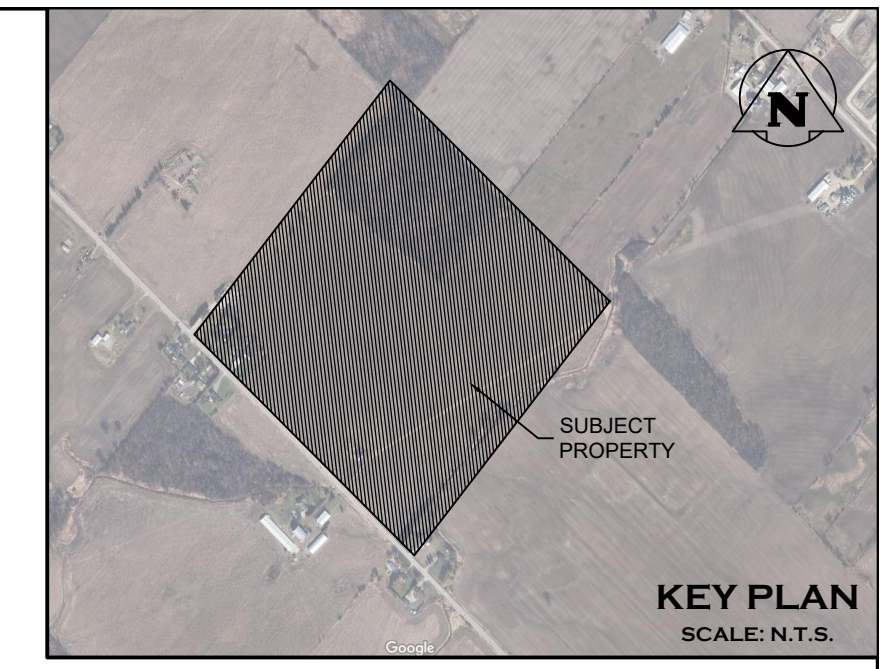
APPENDIX 3

TREE PRESERVATION PLAN



NOTES:

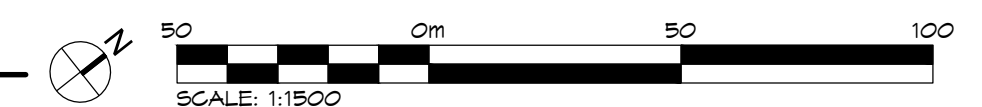
- 1.0 TREE REMOVAL RATIONAL
1. FOR SERVICES, GRADING AND DRAINAGE INFORMATION SEE ENGINEERING DRAWINGS.
 2. THE CONTRACTOR SHALL CHECK AND VERIFY ALL EXISTING AND PROPOSED GRADES AND CONDITIONS OF THE PROJECT AND IMMEDIATELY REPORT ANY DISCREPANCIES TO THE CONSULTANT BEFORE PROCEEDING WITH ANY REMOVALS.
 3. TREE REMOVALS SHALL CONFORM WITH THE MIGRATORY BIRDS CONVENTION ACT AND MUNICIPAL BY-LAWS.
- 2.0 GENERAL
1. FOR TREE PROTECTION NOTES, REFER TO DRAWINGS TPP-4.
 2. FOR TREE INVENTORY CHART, REFER TO TPP-3.



LEGEND

	PROPERTY BOUNDARY
	LOT BOUNDARY
	WATERCOURSE
	EDGE OF VEGETATION TO BE RETAINED AND PROTECTED
	TREE PROTECTION FENCE
	EXISTING FENCE
	EXISTING DECIDUOUS TREE TO BE REMOVED
	EXISTING CONIFEROUS TREE TO BE REMOVED
	EXISTING DECIDUOUS TREE TO BE RETAINED OR PROTECTED
	EXISTING CONIFEROUS TREE TO BE RETAINED OR PROTECTED

1 OVERALL TREE PRESERVATION PLAN
TPP-1



1. THIS DRAWING IS THE EXCLUSIVE PROPERTY OF C.F. GROZIER & ASSOCIATES INC. AND THE MODIFICATION AND/OR REPRODUCTION OF ANY PART OF THIS DRAWING IS STRICTLY PROHIBITED WITHOUT WRITTEN AUTHORIZATION FROM THIS OFFICE.

2. THE DIGITAL FILES CONTAIN INTELLECTUAL AND DIGITAL DATA PROPERTY THAT IS THE EXCLUSIVE PROPERTY OF C.F. GROZIER & ASSOCIATES INC.

3. THE CONTRACTOR SHALL VERIFY ALL DIMENSIONS, LEVELS, AND DATUMS ON SITE AND REPORT ANY DISCREPANCIES OR OMISSIONS TO C.F. GROZIER & ASSOCIATES INC. PRIOR TO CONSTRUCTION.

4. THIS DRAWING IS TO BE READ AND UNDERSTOOD IN CONJUNCTION WITH ALL OTHER PLANS AND DOCUMENTS APPLICABLE TO THIS PROJECT.

5. ALL EXISTING UNDERGROUND UTILITIES TO BE VERIFIED IN THE FIELD BY THE CONTRACTOR PRIOR TO CONSTRUCTION.

6. DO NOT SCALE DRAWINGS.

NOTES:

1. TOPOGRAPHIC SURVEY PROVIDED BY R-PE SURVEYING LTD. (RECEIVED ON 2024.06.20).
2. BASE INFORMATION PROVIDED BY URBANTECH CONSULTING LTD. (RECEIVED ON 2024.09.22).
3. ALL DIMENSIONS ARE IN METERS UNLESS OTHERWISE NOTED.

No.	ISSUE	DATE: YYYY/MM/DD
0	ISSUED FOR 1st SUBMISSION	2024/04/13

ARBORIST

MATTHEW CAMPBELL, OALA, CSLA
CERTIFIED ARBORIST (ISA 0N-3008-A),
TRAG

Project

**ARGO ALLOA (BT) CORPORATION -
TREE PRESERVATION PLAN
TOWN OF CALEDON**

Drawing

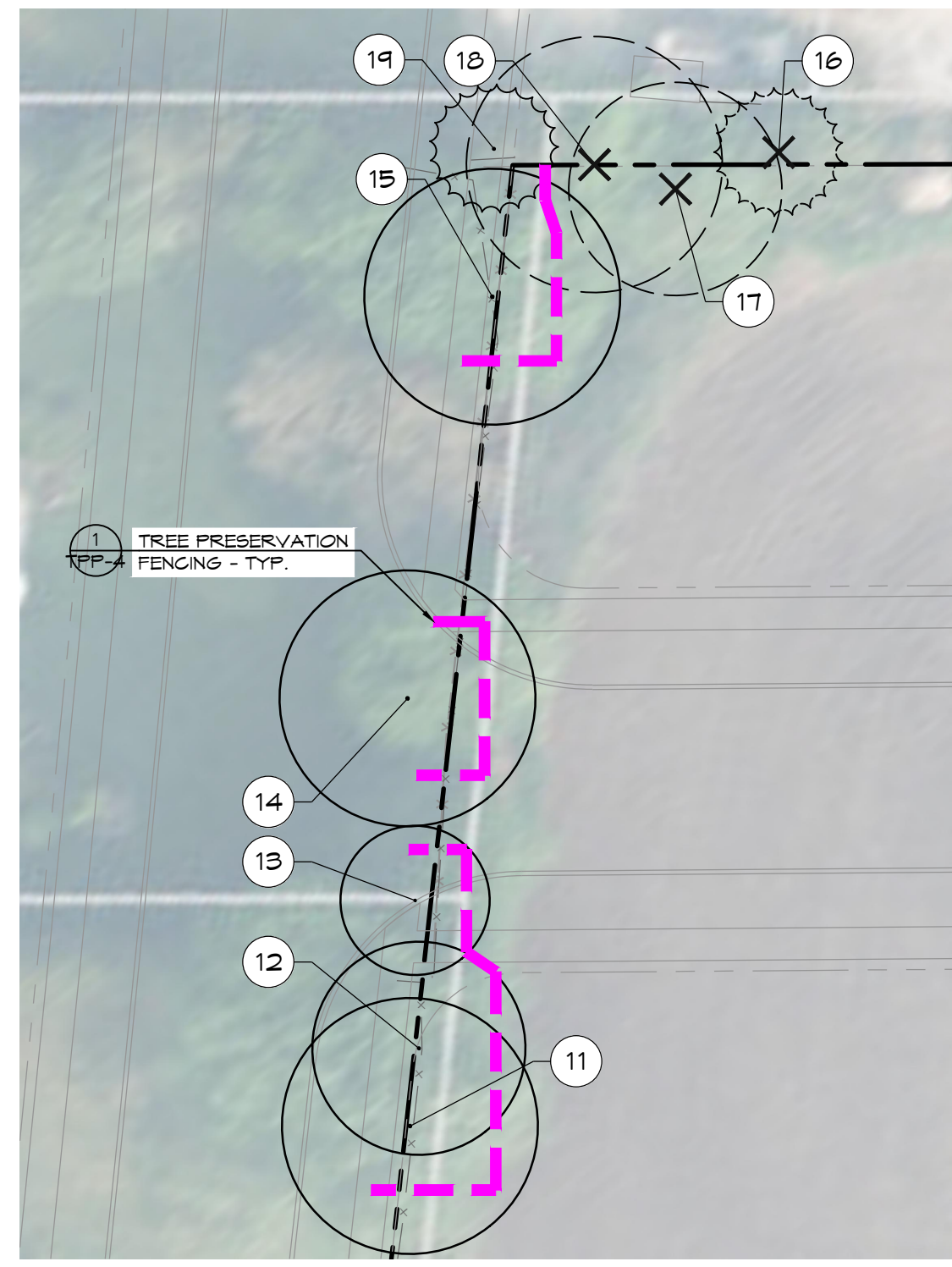
OVERALL TREE PRESERVATION PLAN

CROZIER
CONSULTING ENGINEERS

Drawn By	K.C.	Design By	K.C./M.C.	Project	912-7136
Check By	M.C.	Check By		Drawing	TPP-1



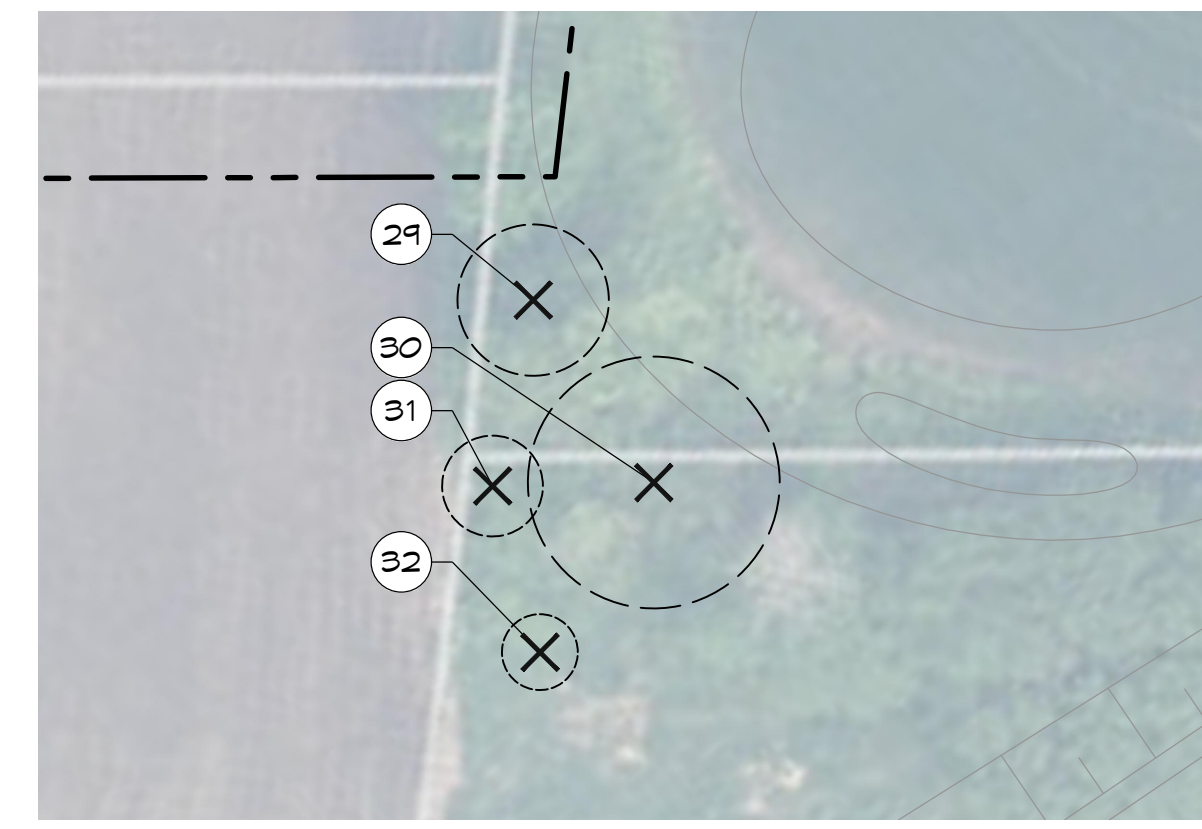
1 ENLARGEMENT 1
TPP-2



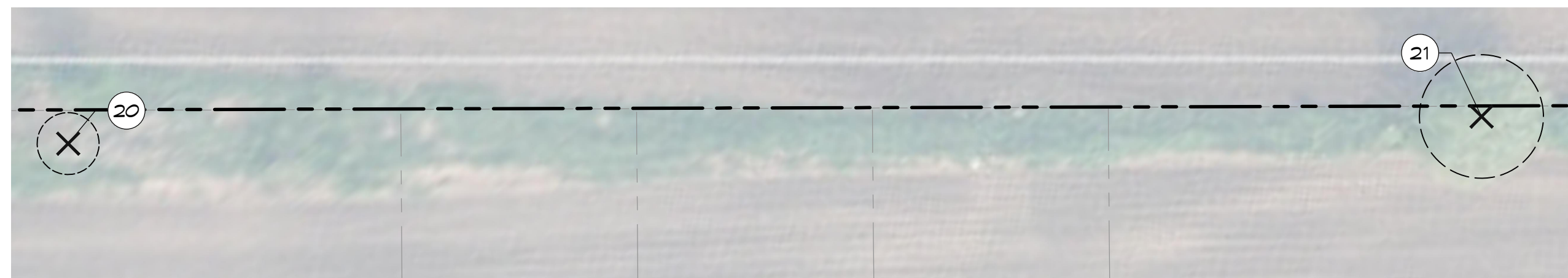
2 ENLARGEMENT 2
TPP-2



6 ENLARGEMENT 6
TPP-2



7 ENLARGEMENT 7
TPP-2



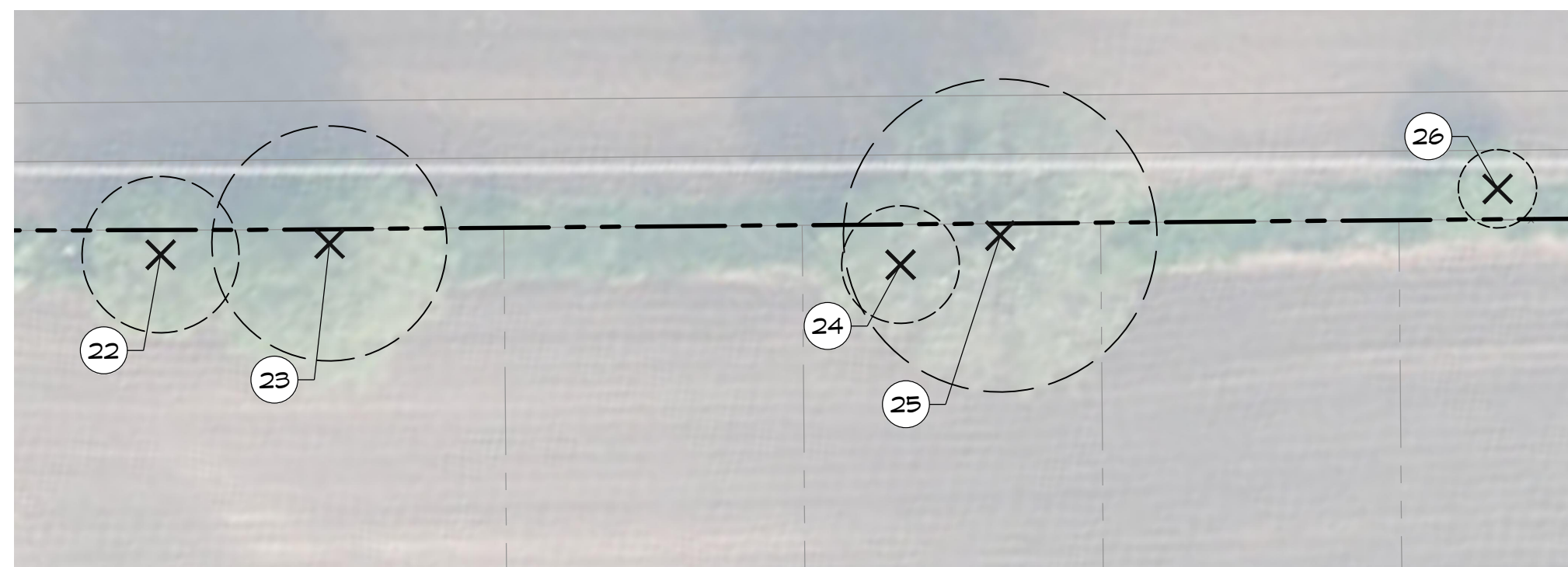
3 ENLARGEMENT 3
TPP-2



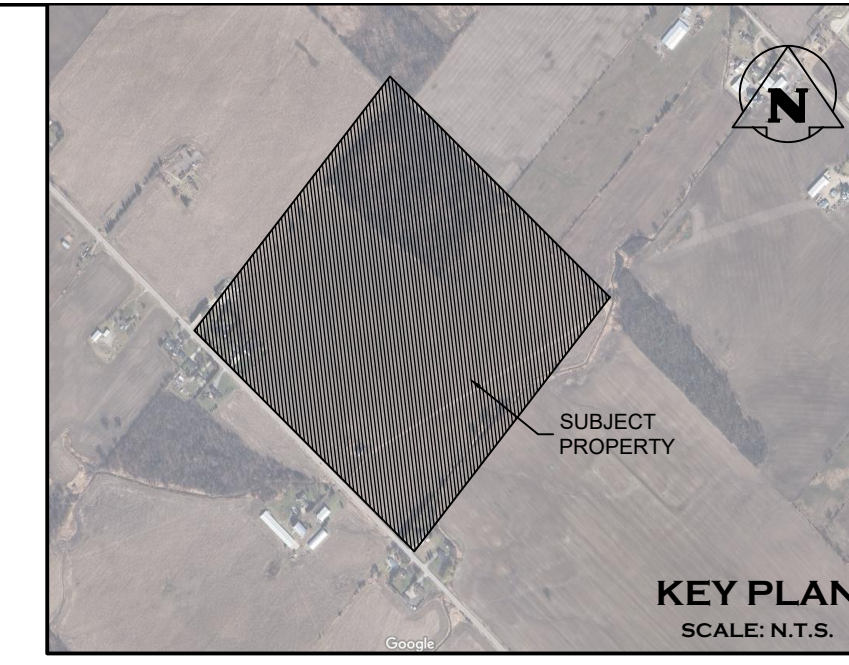
5 ENLARGEMENT 5
TPP-2



8 ENLARGEMENT 8
TPP-2



4 ENLARGEMENT 4
TPP-2



- LEGEND**
- PROPERTY BOUNDARY
 - - - LOT BOUNDARY
 - - - WATERCOURSE
 - EXISTING VEGETATION TO BE REMOVED
 - ~ EDGE OF VEGETATION TO BE RETAINED AND PROTECTED
 - - - TREE PROTECTION FENCE
 - - - EXISTING CHAINLINK FENCE
 - ⊗ EXISTING DECIDUOUS TREE TO BE REMOVED
 - ⊗ EXISTING CONIFEROUS TREE TO BE REMOVED
 - EXISTING DECIDUOUS TREE TO BE RETAINED OR PROTECTED
 - EXISTING CONIFEROUS TREE TO BE RETAINED OR PROTECTED
 - 14 TREE ID. #

- NOTES:**
- 1.0 TREE REMOVAL RATIONAL
- FOR SERVICING, GRADING AND DRAINAGE INFORMATION SEE ENGINEERING DRAWINGS.
 - THE CONTRACTOR SHALL CHECK AND VERIFY ALL EXISTING AND PROPOSED GRADES AND CONDITIONS OF THE PROJECT AND IMMEDIATELY REPORT ANY DISCREPANCIES TO THE CONSULTANT BEFORE PROCEEDING WITH ANY REMOVALS.
 - TREE REMOVALS SHALL CONFORM WITH THE MIGRATORY BIRDS CONVENTION ACT AND MUNICIPAL BY-LAWS.
- 2.0 GENERAL
- FOR LOCATION OF VIEWPORTS, REFER TO DRAWINGS TPP-1.
 - FOR TREE INVENTORY CHART, REFER TO TPP-3.
 - FOR TREE PROTECTION NOTES, REFER TO DRAWINGS TPP-4.
 - ALL NORTH ARROW AND SCALE ARE APPLICABLE TO ALL VIEWPORTS.



1. THIS DRAWING IS THE EXCLUSIVE PROPERTY OF C.F. GROZIER & ASSOCIATES INC. AND THE MODIFICATION AND/OR REPRODUCTION OF ANY PART OF THIS DRAWING IS STRICTLY PROHIBITED WITHOUT WRITTEN AUTHORIZATION FROM THIS OFFICE.
 2. THE DIGITAL FILES CONTAIN INTELLECTUAL AND DIGITAL DATA PROPERTY THAT IS THE EXCLUSIVE PROPERTY OF C.F. GROZIER & ASSOCIATES INC.
 3. THE CONTRACTOR SHALL VERIFY ALL DIMENSIONS, LEVELS, AND DATUMS ON SITE AND REPORT ANY DISCREPANCIES OR OMISSIONS TO C.F. GROZIER & ASSOCIATES INC. PRIOR TO CONSTRUCTION.
 4. THIS DRAWING IS TO BE READ AND UNDERSTOOD IN CONJUNCTION WITH ALL OTHER PLANS AND DOCUMENTS APPLICABLE TO THIS PROJECT.
 5. ALL EXISTING UNDERGROUND UTILITIES TO BE VERIFIED IN THE FIELD BY THE CONTRACTOR PRIOR TO CONSTRUCTION.
 6. DO NOT SCALE DRAWINGS.

NOTES:

- TOPOGRAPHIC SURVEY PROVIDED BY R-PE SURVEYING LTD. (RECEIVED ON 2024.06.20).
- BASE INFORMATION PROVIDED BY URBANTECH CONSULTING LTD. (RECEIVED ON 2024.09.22).
- ALL DIMENSIONS ARE IN METERS UNLESS OTHERWISE NOTED.

No.	ISSUE	DATE: YYYY/MM/DD
0	ISSUED FOR 1st SUBMISSION	2024/04/13

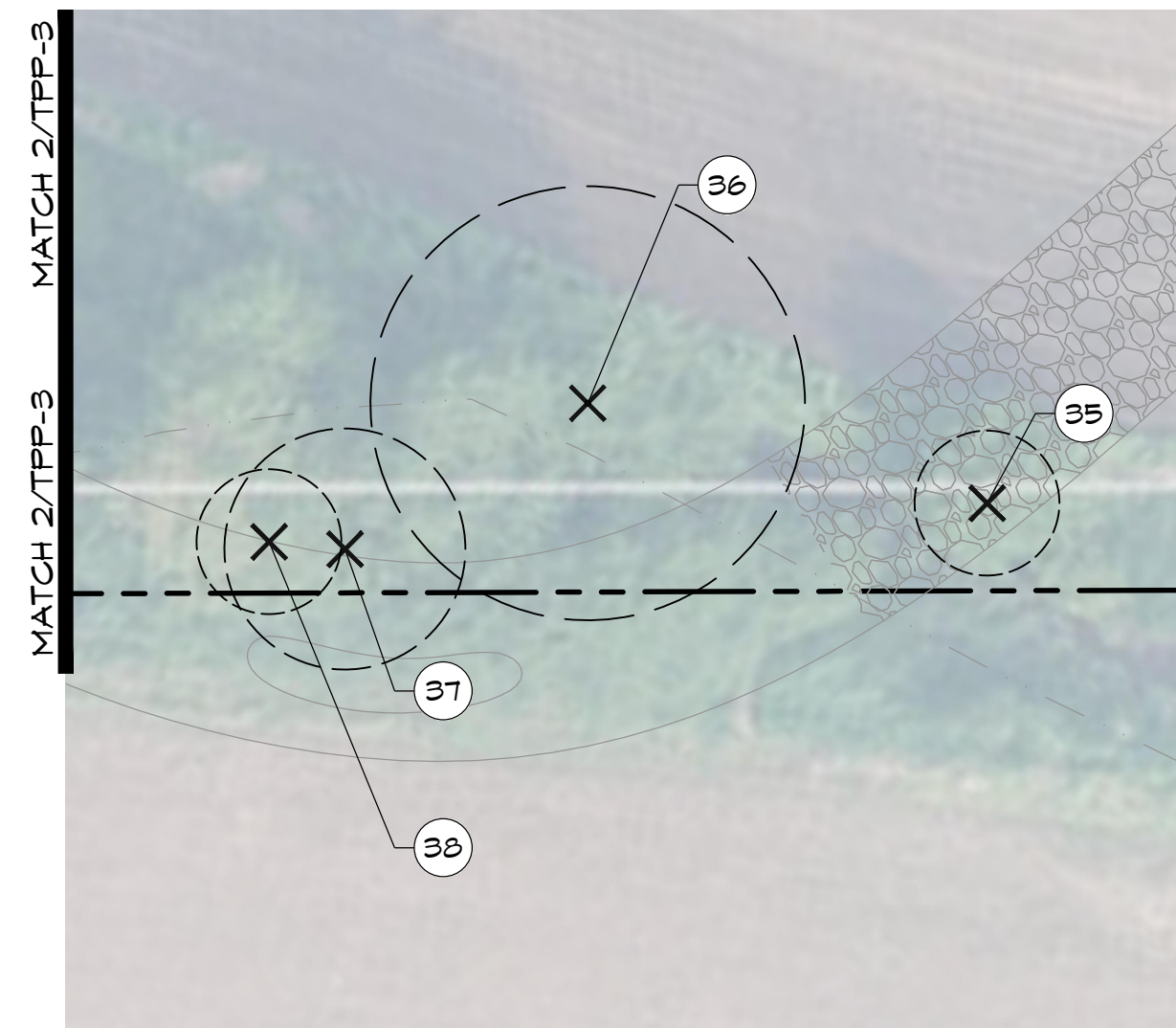
CERTIFIED ARBORIST
 MATTHEW CAMPBELL, OALA, OSLA
 CERTIFIED ARBORIST (ISA 0N-3008-A),
 TRAG

Project: **ARGO ALLOA (BT) CORPORATION - TREE PRESERVATION PLAN TOWN OF CALEDON**

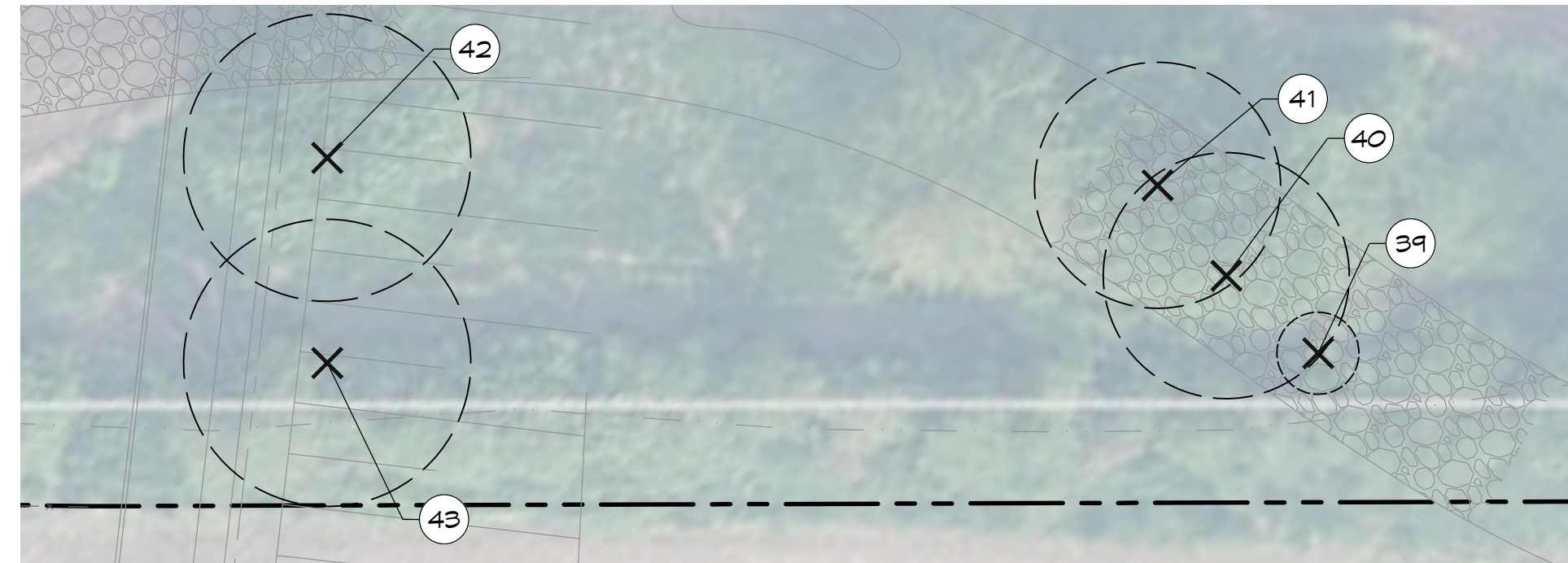
Drawing: **TREE PRESERVATION ENLARGEMENT PLAN**

Drawn By: K.C. Design By: K.C./M.C. Project: 912-7136

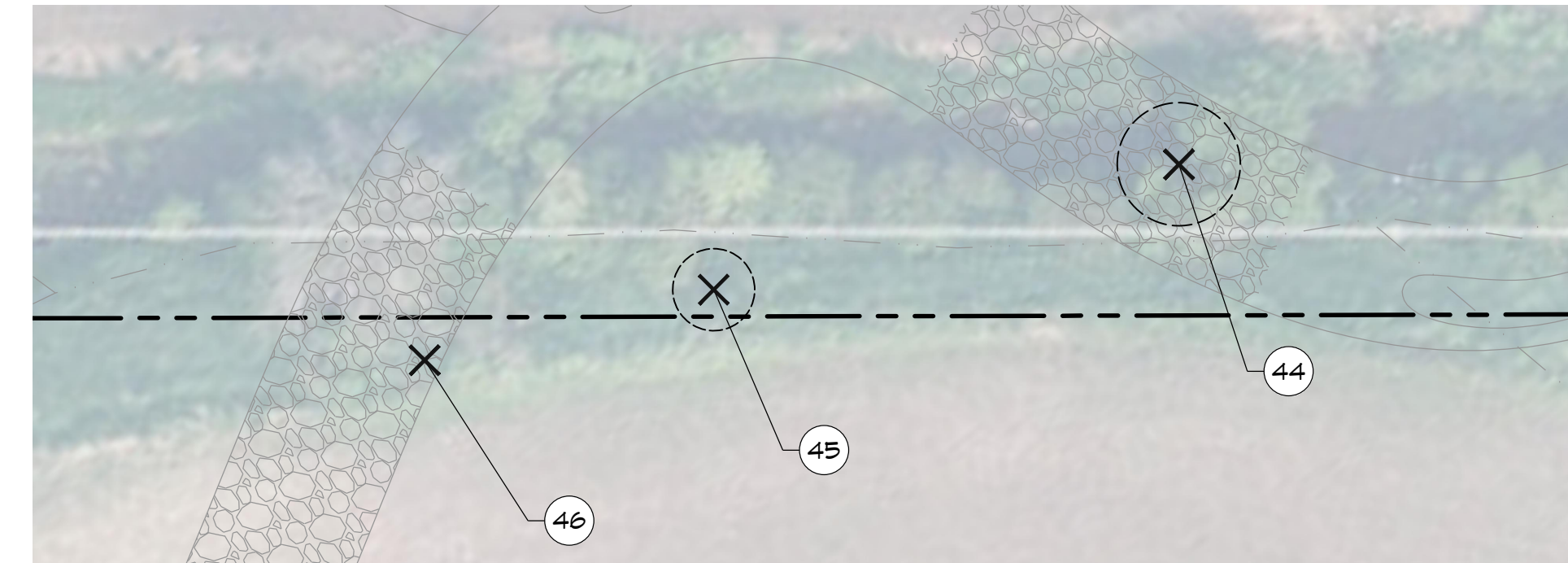
Check By: M.C. Check By: M.C. Drawing: TPP-2



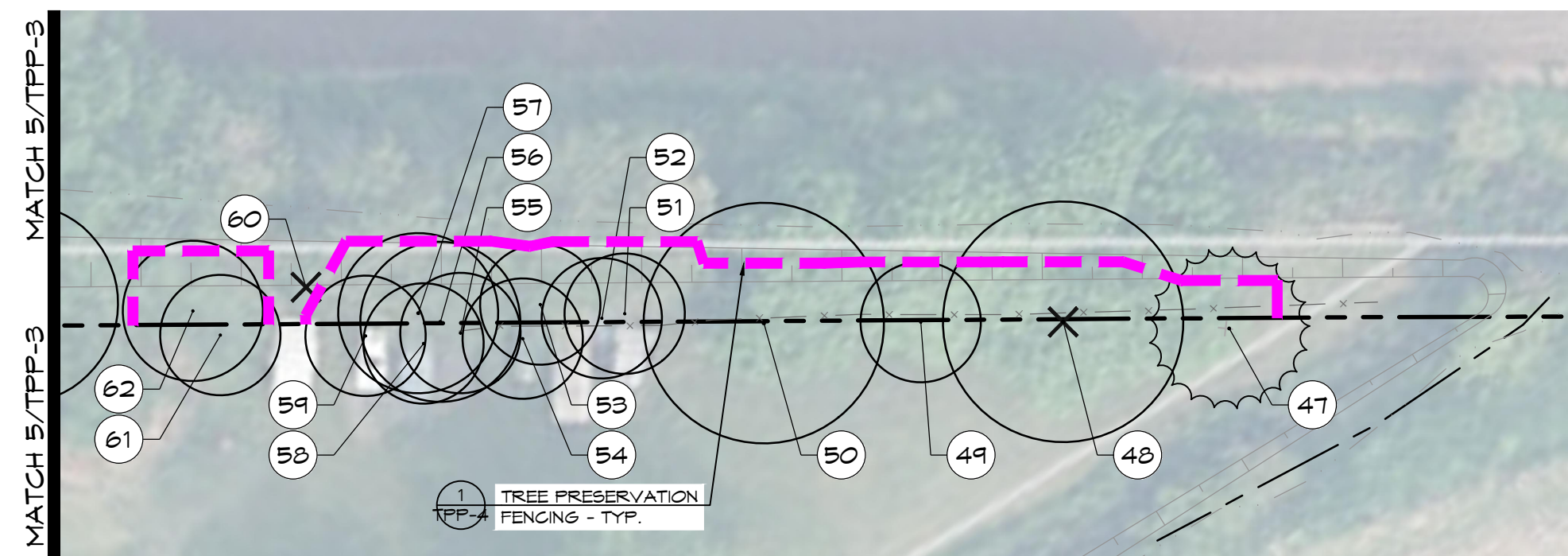
1 ENLARGEMENT 9



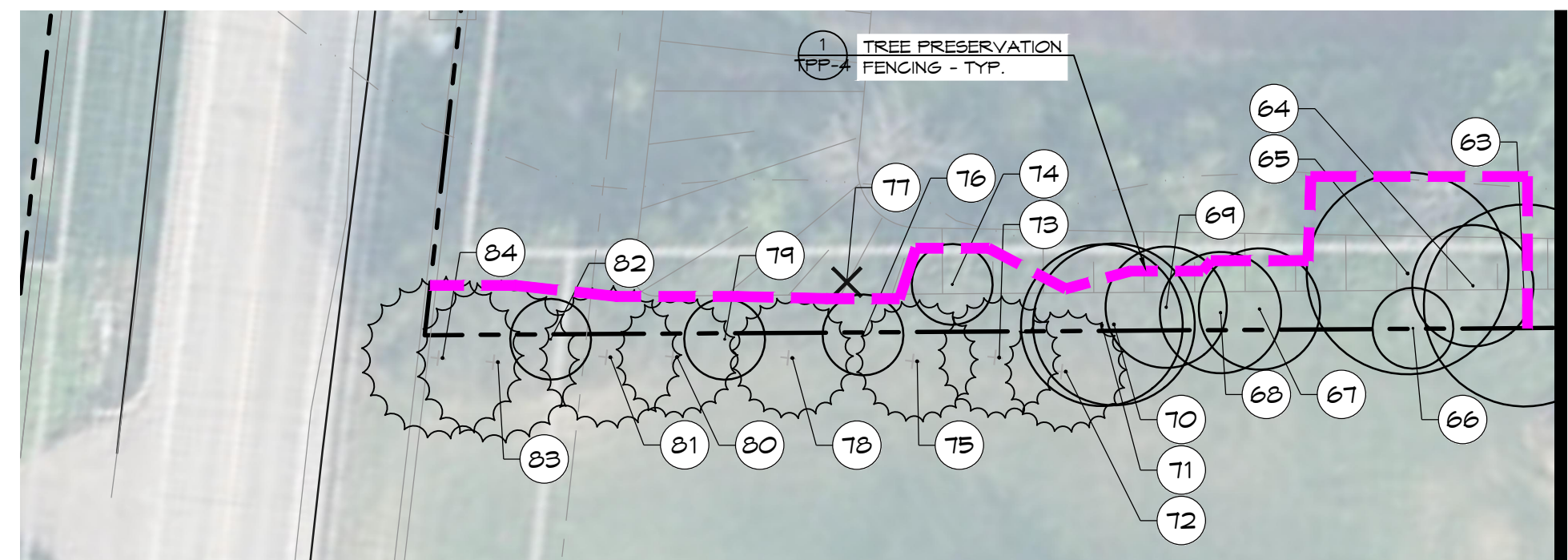
2 ENLARGEMENT 10



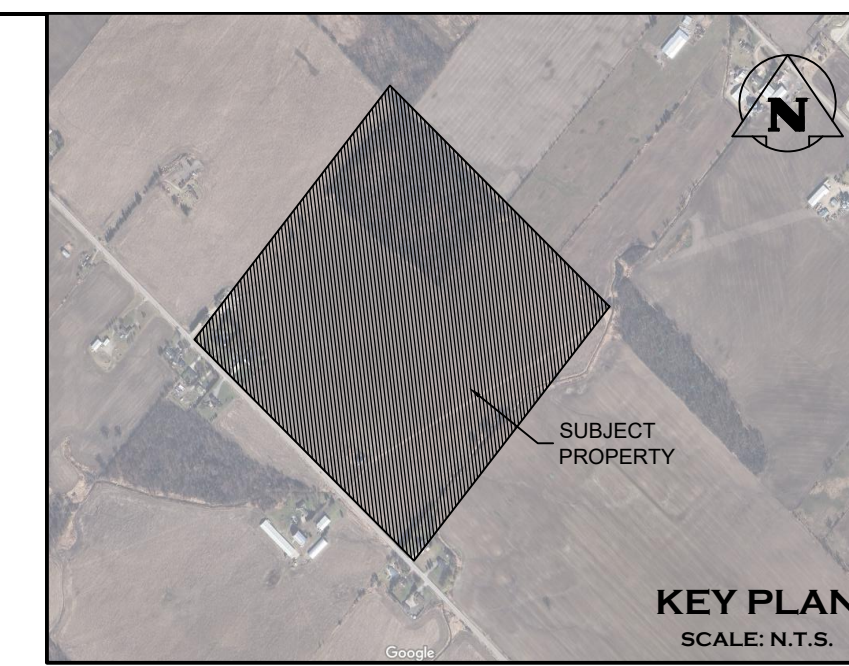
3 ENLARGEMENT 11



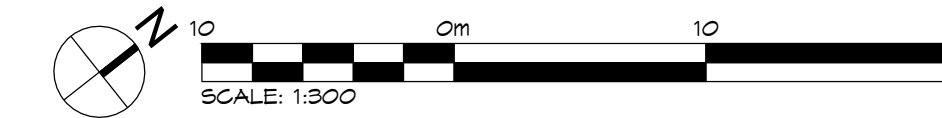
4 ENLARGEMENT 12



5 ENLARGEMENT 13



- LEGEND**
- PROPERTY BOUNDARY
 - LOT BOUNDARY
 - WATERCOURSE
 - EXISTING VEGETATION TO BE REMOVED
 - EDGE OF VEGETATION TO BE RETAINED AND PROTECTED
 - TREE PROTECTION FENCE
 - EXISTING CHAINLINK FENCE
 - EXISTING DECIDUOUS TREE TO BE REMOVED
 - EXISTING CONIFEROUS TREE TO BE REMOVED
 - EXISTING DECIDUOUS TREE TO BE RETAINED OR PROTECTED
 - EXISTING CONIFEROUS TREE TO BE RETAINED OR PROTECTED
 - TREE ID. #



NOTES:

- 1.0 TREE REMOVAL RATIONAL**
1. FOR SERVICES, GRADING AND DRAINAGE INFORMATION SEE ENGINEERING DRAWINGS.
 2. THE CONTRACTOR SHALL CHECK AND VERIFY ALL EXISTING AND PROPOSED GRADES AND CONDITIONS OF THE PROJECT AND IMMEDIATELY REPORT ANY DISCREPANCIES TO THE CONSULTANT BEFORE PROCEEDING WITH ANY REMOVALS.
 3. TREE REMOVALS SHALL CONFORM WITH THE MIGRATORY BIRDS CONVENTION ACT AND MUNICIPAL BY-LAWS.
- 2.0 GENERAL**
1. FOR LOCATION OF VIEWPORTS, REFER TO DRAWINGS TPP-1.
 2. FOR TREE PROTECTION NOTES, REFER TO DRAWINGS TPP-4.
 3. ALL NORTH ARROW AND SCALE ARE APPLICABLE TO ALL VIEWPORTS.

ID No.	Botanical Name	Common Name	DBH (cm) (Diameter at Breast Height)	Canopy Radius (m)	mTPZ (m) (Minimum Tree Protection)	Condition	Ownership	Directive	Comments
1	<i>Betula nigra</i>	River Birch	13	2.5	1.8	Good	Neighbour	Preserve	
2	<i>Acer saccharinum</i>	Silver Maple	15, 11	3	1.8	Fair	Shared	Preserve	Multi stem 15 & 11cm
3	<i>Acer saccharinum</i>	Silver Maple	15, 15, 15, 5	3	1.8	Fair	Shared	Preserve	Multi stem, 4 stems.
4	<i>Betula nigra</i>	River Birch	18	3	1.8	Good	Shared	Preserve	Cump form.
5	<i>Salix bebbiana</i>	Bebb's Willow	15	3	1.8	Fair	Shared	Preserve	Multi stem, more than 8 stems.
6	<i>Salix bebbiana</i>	Bebb's Willow	15	3	1.8	Fair	Shared	Preserve	Multi stem, more than 8 stems.
7	<i>Salix bebbiana</i>	Bebb's Willow	15	3	1.8	Fair	Shared	Preserve	Multi stem, 10 stems.
8	<i>Salix babylonica</i>	Weeping Willow	25	6	1.8	Fair	Neighbour	Preserve	trunk wounds at base, 2 stems both 25cm
9	<i>Salix babylonica</i>	Weeping Willow	28	6	1.8	Fair	Neighbour	Preserve	trunk wounds at base, 3 stem 28, 25, 20cm
10	<i>Acer saccharinum</i>	Silver Maple	40	6	2.4	Poor	Shared	Preserve	dieback in canopy, 5 stems at the base, 40cm and under
11	<i>Acer saccharinum</i>	Silver Maple	45	6	3.0	Fair	Shared	Preserve	dieback in canopy, codominant at 1.4m
12	<i>Acer saccharinum</i>	Silver Maple	60	5	3.6	Fair	Shared	Preserve	dieback in canopy, codominant at 1.4m
13	<i>Acer saccharinum</i>	Silver Maple	40	3.5	2.4	Fair	Shared	Preserve	codominant at 1.4m.
14	<i>Acer saccharinum</i>	Silver Maple	60	6	3.6	Good	Neighbour	Preserve	
15	<i>Acer saccharum</i>	Sugar Maple	50	6	3.0	Fair	Shared	Preserve	
16	<i>Floea abies</i>	Norway spruce	30	3	2.4	Fair	Shared	Remove	boundary tree. Remove due to conflicts with development.
17	<i>Acer saccharinum</i>	Silver Maple	40	5	2.4	Fair	Shared	Remove	boundary tree. Remove due to conflicts with development.
18	<i>Acer saccharinum</i>	Silver Maple	50	6	3.0	Fair	Shared	Remove	boundary tree. Remove due to conflicts with development.
19	<i>Floea abies</i>	Norway spruce	30	3	2.4	Fair	Shared	Preserve	boundary tree
20	<i>Ulmus spp.</i>	Elm spp.	18	2	1.8	Fair	Shared	Remove	multi stem 15 & 10cm. Remove due to conflicts with development.
21	<i>Quercus macrocarpa</i>	Bur Oak	40	4	2.4	Fair	Shared	Remove	boundary tree. Codominant at 1.4m. Remove due to conflicts with development.
22	<i>Quercus macrocarpa</i>	Bur Oak	40	4	2.4	Fair	Private	Remove	boundary tree. Remove due to conflicts with development.
23	<i>Quercus macrocarpa</i>	Bur Oak	103	6	6.2	Poor	Private	Remove	decay and rot from base up north side of tree. boundary tree.
24	<i>Quercus macrocarpa</i>	Bur Oak	30	3	2.4	Fair	Private	Remove	boundary tree. Remove due to conflicts with development.
25	<i>Quercus macrocarpa</i>	Bur Oak	110	8	6.6	Fair	Private	Remove	boundary tree. Remove due to conflicts with development.
26	<i>Crataegus spp.</i>	Hawthorn spp.	15	2	1.8	Fair	Neighbour	Remove	Multi stem 15 & 10cm.
27	<i>Fraxinus spp.</i>	Ash spp.	15-25	0		Dead	Neighbour	Preserve	Group of 13 dead ash trees on neighbouring property.
28	<i>Fraxinus spp.</i>	Ash spp.	18	0		Dead	Neighbour	Preserve	Group of 4 dead ash trees on neighbouring property.
29	<i>Acer saccharinum</i>	Silver Maple	18	3	1.8	Fair	Neighbour	Remove	Multi stem, 8 stems between 3-18cm
30	<i>Acer saccharinum</i>	Silver Maple	30	5	2.4	Fair	Neighbour	Remove	Remove due to conflict with proposed channel re-alignment
31	<i>Tilia americana</i>	Basswood	15	2	1.8	Fair	Neighbour	Remove	Multi stem, 5 stems all under 15cm.
32	<i>Fraxinus spp.</i>	Ash spp.	13	1.5	1.8	Poor	Neighbour	Remove	Evidence of emerald ash borer.
33	<i>Quercus macrocarpa</i>	Bur Oak	100	8	6.0	Poor	Neighbour	Preserve	85% canopy dead.
34	<i>Acer negundo</i>	Manitoba Maple	18	3	1.8	Fair	Neighbour	Preserve	multi stem
35	<i>Acer saccharinum</i>	Silver Maple	15	3	1.8	Fair	Private	Remove	3 clumps of at least 15 stems. On edge of bank. Remove due to conflict with develop
36	<i>Acer saccharinum</i>	Silver Maple	100	9	6.0	Fair	Private	Remove	Remove due to conflict with development.
37	<i>Acer saccharinum</i>	Silver Maple	100	5	6.0	Poor	Private	Remove	Remove due to conflict with development.
38	<i>Acer freemanii</i>	Freeman maple	30	3	2.4	Fair	Private	Remove	Remove due to conflict with development.
39	<i>Acer saccharinum</i>	Silver Maple	12	2	1.8	Good	Private	Remove	Remove due to conflict with development.
40	<i>Acer saccharinum</i>	Silver Maple	100	6	6.0	Fair	Private	Remove	Remove due to conflict with development.
41	<i>Acer saccharinum</i>	Silver Maple	45	6	3.0	Fair	Private	Remove	3 stems, all 45cm. Remove due to conflict with development.
42	<i>Acer saccharinum</i>	Silver Maple	40	7	2.4	Fair	Private	Remove	multi stem clumps 10 stems. Remove due to conflict with development.

TREE INVENTORY CHART

ID No.	Botanical Name	Common Name	DBH (cm) (Diameter at Breast Height)	Canopy Radius (m)	mTPZ (m) (Minimum Tree Protection)	Condition	Ownership	Directive	Comments
43	<i>Acer saccharinum</i>	Silver Maple	30	7	2.4	Fair	Private	Remove	Multi stem, 5 stems at base. Remove due to conflict with development.
44	<i>Acer negundo</i>	Manitoba Maple	15	3	1.8	Fair	Private	Remove	multi stem. Remove due to conflict with development.
45	<i>Acer negundo</i>	Manitoba Maple	13	2	1.8	Fair	Private	Remove	Remove due to conflict with development.
46	<i>Fraxinus spp.</i>	Ash spp.	80	0		Dead	Neighbour	Remove	dead ash
47	<i>Floea pungens</i>	Blue Spruce	40	4	2.4	Fair	Shared	Preserve	Thin canopy. One sided.
48	<i>Acer platanoides</i>	Norway Maple	50	6	3.0	Good	Shared	Preserve	
49	<i>Acer platanoides</i>	Norway Maple	50	3	3.0	Fair	Shared	Preserve	
50	<i>Acer platanoides</i>	Norway Maple	50	6	3.0	Fair	Shared	Preserve	
51	<i>Populus spp.</i>	Poplar spp.	60	3	3.6	Fair	Shared	Preserve	
52	<i>Populus spp.</i>	Poplar spp.	60	3	3.6	Fair	Shared	Preserve	
53	<i>Populus spp.</i>	Poplar spp.	30	3	2.4	Fair	Shared	Preserve	
54	<i>Populus spp.</i>	Poplar spp.	30	3	2.4	Fair	Shared	Preserve	
55	<i>Populus spp.</i>	Poplar spp.	40	3	2.4	Fair	Shared	Preserve	
56	<i>Populus spp.</i>	Poplar spp.	50	4	3.0	Fair	Shared	Preserve	
57	<i>Populus spp.</i>	Poplar spp.	60	4	3.6	Fair	Shared	Preserve	Multi stem
58	<i>Populus spp.</i>	Poplar spp.	45	3	3.0	Fair	Shared	Preserve	
59	<i>Populus spp.</i>	Poplar spp.	50	3	3.0	Fair	Shared	Preserve	
60	<i>Fraxinus spp.</i>	Ash spp.	25	0		Dead	Private	Remove	dead ash.
61	<i>Populus spp.</i>	Poplar spp.	3	3	2.4	Fair	Shared	Preserve	
62	<i>Populus spp.</i>	Poplar spp.	45	3.5	3.0	Fair	Shared	Preserve	
63	<i>Ulmus spp.</i>	Elm spp.	80	5	4.8	Fair	Private	Preserve	
64	<i>Populus spp.</i>	Poplar spp.	20	3	1.8	Fair	Private	Preserve	
65	<i>Tilia americana</i>	Basswood	50	5	3.0	Fair	Private	Preserve	
66	<i>Populus spp.</i>	Poplar spp.	10	2	1.8	Fair	Shared	Preserve	
67	<i>Populus spp.</i>	Poplar spp.	110	3	2.4	Fair	Private	Preserve	
68	<i>Populus spp.</i>	Poplar spp.	23	3	1.8	Fair	Private	Preserve	
69	<i>Populus spp.</i>	Poplar spp.	15	3	1.8	Fair	Private	Preserve	
70	<i>Populus spp.</i>	Poplar spp.	25	4	1.8	Fair	Shared	Preserve	
71	<i>Populus spp.</i>	Poplar spp.	22	4	1.8	Fair	Shared	Preserve	
72	<i>Pinus nigra</i>	Austrian Pine	40*	3	2.4	Fair	Neighbour	Preserve	
73	<i>Pinus nigra</i>	Austrian Pine	50*	2	1.8	Fair	Neighbour	Preserve	
74	<i>Populus spp.</i>	Poplar spp.	15	2	1.8	Fair	Private	Preserve	
75	<i>Pinus nigra</i>	Austrian Pine	40*	3	2.4	Fair	Neighbour	Preserve	
76	<i>Betula spp.</i>	Birch spp.	15	2	1.8	Fair	Shared	Preserve	
77	<i>Fraxinus spp.</i>	Ash spp.	35	0		Dead	Private	Remove	dead ash
78	<i>Pinus nigra</i>	Austrian Pine	30*	3	2.4	Fair	Neighbour	Preserve	
79	<i>Quercus macrocarpa</i>	Bur Oak	100	5	1.8	Fair	Shared	Preserve	
80	<i>Pinus nigra</i>	Austrian Pine	50*	3	3.0	Fair	Neighbour	Preserve	
81	<i>Pinus nigra</i>	Austrian Pine	50	3.5	3.0	Fair	Shared	Preserve	
82	<i>Populus spp.</i>	Poplar spp.	15	2	1.8	Fair	Shared	Preserve	
83	<i>Pinus nigra</i>	Austrian Pine	50*	4	3.0	Fair	Neighbour	Preserve	
84	<i>Pinus nigra</i>	Austrian Pine	60*	4	3.6	Fair	Neighbour	Preserve	

1. THIS DRAWING IS THE EXCLUSIVE PROPERTY OF C.F. CROZIER & ASSOCIATES INC. AND THE MODIFICATION AND/OR REPRODUCTION OF ANY PART OF THIS DRAWING IS STRICTLY PROHIBITED WITHOUT WRITTEN AUTHORIZATION FROM THIS OFFICE.
2. THE DIGITAL FILES CONTAIN INTELLECTUAL AND DIGITAL DATA PROPERTY THAT IS THE EXCLUSIVE PROPERTY OF C.F. CROZIER & ASSOCIATES INC.
3. THE CONTRACTOR SHALL VERIFY ALL DIMENSIONS, LEVELS, AND DATUMS ON SITE AND REPORT ANY DISCREPANCIES OR OMISSIONS TO C.F. CROZIER & ASSOCIATES INC. PRIOR TO CONSTRUCTION.
4. THIS DRAWING IS TO BE READ AND UNDERSTOOD IN CONJUNCTION WITH ALL OTHER PLANS AND DOCUMENTS APPLICABLE TO THIS PROJECT.
5. ALL EXISTING UNDERGROUND UTILITIES TO BE VERIFIED IN THE FIELD BY THE CONTRACTOR PRIOR TO CONSTRUCTION.
6. DO NOT SCALE DRAWINGS.

- NOTES:**
1. TOPOGRAPHIC SURVEY PROVIDED BY R-PE SURVEYING LTD. (RECEIVED ON 2024.06.20).
 2. BASE INFORMATION PROVIDED BY URBANTECH CONSULTING LTD. (RECEIVED ON 2024.09.22).
 3. ALL DIMENSIONS ARE IN METERS UNLESS OTHERWISE NOTED.

NO.	ISSUE	DATE: YYYY/MM/DD	ARBORIST
0	ISSUED FOR 1st SUBMISSION	2024/04/13	

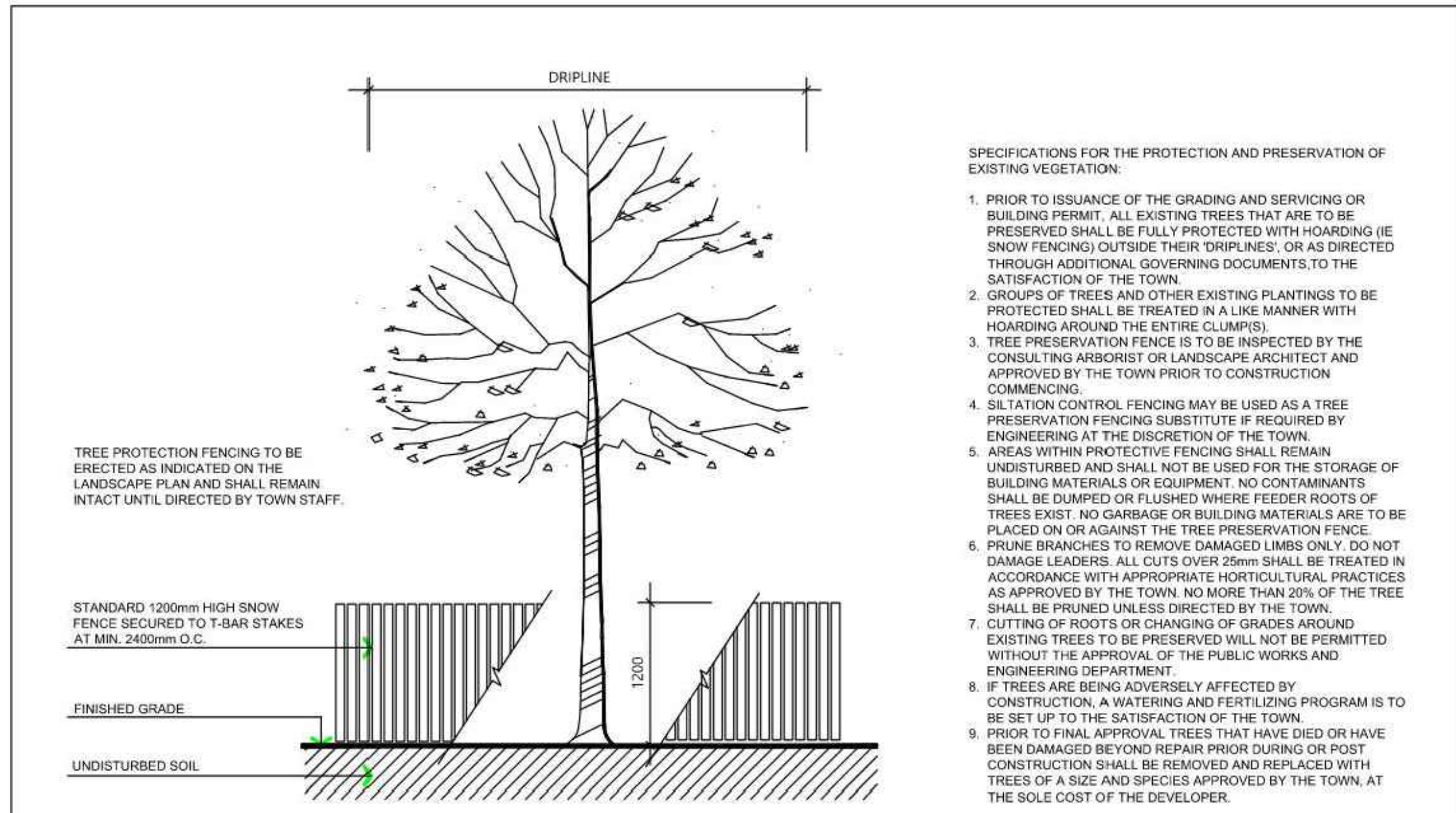
ARBORIST

MATTHEW CAMPBELL, OALA, CSLA
CERTIFIED ARBORIST (ISA 0N-3008-A),
TRAQ

Project: ARGO ALLOA (BT) CORPORATION -
TREE PRESERVATION PLAN
TOWN OF CALEDON

Drawing: TREE PRESERVATION ENLARGEMENT PLAN

Drawn By: K.C. Design By: K.C./M.C. Project: 912-7136
Check By: M.C. Check By: Drawing: TPP-3



SPECIFICATIONS FOR THE PROTECTION AND PRESERVATION OF EXISTING VEGETATION:

1. PRIOR TO ISSUANCE OF THE GRADING AND SERVICING OR BUILDING PERMIT, ALL EXISTING TREES THAT ARE TO BE PRESERVED SHALL BE FULLY PROTECTED WITH HOARDING (IE SNOW FENCING) OUTSIDE THEIR DRIPLINES, OR AS DIRECTED THROUGH ADDITIONAL GOVERNING DOCUMENTS, TO THE SATISFACTION OF THE TOWN.
2. GROUPS OF TREES AND OTHER EXISTING PLANTINGS TO BE PROTECTED SHALL BE TREATED IN A LIKE MANNER WITH HOARDING AROUND THE ENTIRE CLUMP(S).
3. TREE PRESERVATION FENCE IS TO BE INSPECTED BY THE CONSULTING ARBORIST OR LANDSCAPE ARCHITECT AND APPROVED BY THE TOWN PRIOR TO CONSTRUCTION COMMENCING.
4. SILTATION CONTROL FENCING MAY BE USED AS A TREE PRESERVATION FENCING SUBSTITUTE IF REQUIRED BY ENGINEERING AT THE DISCRETION OF THE TOWN.
5. AREAS WITHIN PROTECTIVE FENCING SHALL REMAIN UNDISTURBED AND SHALL NOT BE USED FOR THE STORAGE OF BUILDING MATERIALS OR EQUIPMENT. NO CONTAMINANTS SHALL BE DUMPED OR FLUSHED WHERE FEEDER ROOTS OF TREES EXIST. NO GARBAGE OR BUILDING MATERIALS ARE TO BE PLACED ON OR AGAINST THE TREE PRESERVATION FENCE.
6. PRUNE BRANCHES TO REMOVE DAMAGED LIMBS ONLY. DO NOT DAMAGE LEADERS. ALL CUTS OVER 25mm SHALL BE TREATED IN ACCORDANCE WITH APPROPRIATE HORTICULTURAL PRACTICES AS APPROVED BY THE TOWN. NO MORE THAN 20% OF THE TREE SHALL BE PRUNED UNLESS DIRECTED BY THE TOWN.
7. CUTTING OF ROOTS OR CHANGING OF GRADES AROUND EXISTING TREES TO BE PRESERVED WILL NOT BE PERMITTED WITHOUT THE APPROVAL OF THE PUBLIC WORKS AND ENGINEERING DEPARTMENT.
8. IF TREES ARE BEING ADVERSELY AFFECTED BY CONSTRUCTION, A WATERING AND FERTILIZING PROGRAM IS TO BE SET UP TO THE SATISFACTION OF THE TOWN.
9. PRIOR TO FINAL APPROVAL TREES THAT HAVE DIED OR HAVE BEEN DAMAGED BEYOND REPAIR PRIOR DURING OR POST CONSTRUCTION SHALL BE REMOVED AND REPLACED WITH TREES OF A SIZE AND SPECIES APPROVED BY THE TOWN, AT THE SOLE COST OF THE DEVELOPER.

TOWN OF CALEDON		APRD: C.C.	DATE: JUNE 08
3	STANDARD 707 NOW 606	JAN 16	
2	STANDARD No. 1135 NOW 707, NOTES EDIT	JUNE 08	DRAWN: abal SCALE: NTS
1	NOTE NO. 9 ADDED	MARCH 08	
NO.	REVISION	APRD	DATE
STANDARD No. 606			

1 TREE PRESERVATION FENCING

N.T.S.

SPECIFICATIONS

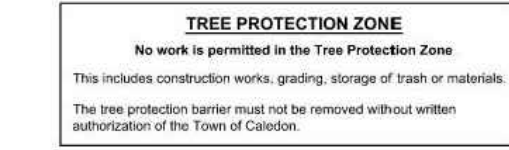
A. General

The following Tree Preservation and Protection Measures will be undertaken to help eliminate and/or significantly reduce construction injury to all trees recommended for preservation. All temporary tree protection measures cited for retained trees must comply with the Town of Caledon Tree Protection Specifications and Details. Any variation from the standard tree protection measures must be approved in writing by the Town of Caledon.

B. Pre-Construction Phase

1. Prior to construction, the trees to be preserved shall be protected with a Tree Protection Barrier. The barrier shall consist of 1.2m (4ft) high orange plastic snow fence wired to T-bars (see Town of Caledon Tree Preservation Fencing, STD 606).
2. If applicable, attach a filter cloth 600mm high to the construction side of the hoarding to act as sediment control. Sediment control fencing shall meet or exceed OPSD-219.110, and be installed to the satisfaction of the Town of Caledon.
3. All supports and bracing used to safely secure the barrier should be located outside the Tree Protection Zone (TPZ). All supports and bracing should minimize damage to roots.
4. The TPZ fence is to be installed along the edge of the tree protection zones. This hoarding is to remain in place and remain in good condition throughout the entire duration of the project. Dismantling the tree protection barrier prior to approval by the Town of Caledon staff may constitute a contravention.
5. The applicant shall notify the Town of Caledon and the consulting certified arborist or landscape architect to confirm that the tree preservation and protection measures are in place.

6. Where fill or excavated material must be temporarily located near a TPZ, a wooden barrier must be used to ensure no material enters the TPZ.
7. Remove any garbage and foreign debris from the tree protection zones, daily.
8. For the trees that were recommended for removal and/or crown pruning that are within the TPZ limits, these activities are to be performed by a qualified ISA certified arborist prior to the installation of the Tree Protection Zone barriers and prior to the commencement of any construction activities. Install the Tree Protection Zone barrier as per Tree Preservation Fencing, STD 606 at the limits shown on the tree inventory and protection plan after the tree removal, whichever is greater, and crown pruning activities are completed.
9. A Tree Protection Zone sign must be mounted on all sides of the tree protection barrier for the duration of site construction. The sign should be a minimum of 40cm x 60cm and made of white gator board or equivalent material.
10. The sign must be similar to the illustration shown below, or as directed by the Town of Caledon.



11. All contractors and site visitors should be informed of the tree preservation and protection measures at a pre-construction meeting.

specifications continued on next panel.

TOWN OF CALEDON		APRD: B.B.	DATE: AUGUST 17
TREE PRESERVATION		DRAWN: B.M.	SCALE: NTS
NO.	REVISION	APRD	DATE
STANDARD No. 710			

2 TREE PRESERVATION STANDARD NOTES

SPECIFICATIONS continued from previous panel

C. During Construction Phase

1. All areas within the TPZ shall remain undisturbed for the duration of construction. There will be no grade changes, dumping, and storage of any materials, structures or equipment within these areas. The Tree Protection Barrier must not be removed without the written authorization of the Town of Caledon.
2. Minor grading works will be permitted at the edge of the preservation zone as required to correct localized depressions, and blend to existing grades. This work to be undertaken under the direct supervision of an ISA certified arborist. A certified ISA arborist will undertake proper root pruning in accordance with acceptable arboriculture practices when and if roots of retained trees are to be exposed, damaged, or severed by construction work. The exposed roots will be backfilled with appropriate material as soon as possible to prevent desiccation. Root pruning prior to excavation will help prevent necessary damage to tree roots. The use of low pressure hydrovac to expose roots is recommended, at no additional cost.
3. The Town of Caledon must be notified for all work that impacts the TPZ for temporary removal of a section of hoarding to gain access for fine grading or other works. All works are to be supervised by the Town of Caledon.
4. No cables, wire or ropes of any kind shall be wrapped around or installed in trees to be preserved.
5. No contaminants will be dumped or flushed in the TPZ areas or where feeder roots of trees exist (generally beyond the TPZ areas).
6. Irrigate tree protection zones during drought conditions, June to September to reduce drought stress.
7. Inspect the site daily to ensure hoarding is in place and in good condition. Inspect trees to monitor condition.

D. Post Construction Phase

1. Following the completion of all site works including landscaping, and after review and approval by the Town of Caledon staff, the protective hoarding may be removed.
2. After removal of the protective hoarding, the Tree Preservation Zones shall be inspected by the Town of Caledon staff. Any remaining dead, diseased, or hazardous limbs or trees are to be removed by an ISA certified arborist as directed by the consulting arborist or Town of Caledon staff.

end of specifications

TOWN OF CALEDON		APRD: B.B.	DATE: AUGUST 17
TREE PRESERVATION		DRAWN: B.M.	SCALE: NTS
NO.	REVISION	APRD	DATE
STANDARD No. 711			

3 TREE PRESERVATION STANDARD NOTES

N.T.S.

1. THIS DRAWING IS THE EXCLUSIVE PROPERTY OF C.F. GROZIER & ASSOCIATES INC. AND THE MODIFICATION AND/OR REPRODUCTION OF ANY PART OF THIS DRAWING IS STRICTLY PROHIBITED WITHOUT WRITTEN AUTHORIZATION FROM THIS OFFICE.
2. THE DIGITAL FILES CONTAIN INTELLECTUAL AND DIGITAL DATA PROPERTY THAT IS THE EXCLUSIVE PROPERTY OF C.F. GROZIER & ASSOCIATES INC.
3. THE CONTRACTOR SHALL VERIFY ALL DIMENSIONS, LEVELS, AND DATUMS ON SITE AND REPORT ANY DISCREPANCIES OR OMISSIONS TO C.F. GROZIER & ASSOCIATES INC. PRIOR TO CONSTRUCTION.
4. THIS DRAWING IS TO BE READ AND UNDERSTOOD IN CONJUNCTION WITH ALL OTHER PLANS AND DOCUMENTS APPLICABLE TO THIS PROJECT.
5. ALL EXISTING UNDERGROUND UTILITIES TO BE VERIFIED IN THE FIELD BY THE CONTRACTOR PRIOR TO CONSTRUCTION.
6. DO NOT SCALE DRAWINGS.

- NOTES:**
1. TOPOGRAPHIC SURVEY PROVIDED BY R-PE SURVEYING LTD. (RECEIVED ON 2024.06.20).
 2. BASE INFORMATION PROVIDED BY URBANTECH CONSULTING LTD. (RECEIVED ON 2024.09.22).
 3. ALL DIMENSIONS ARE IN METERS UNLESS OTHERWISE NOTED.

NO.	ISSUE	DATE: YYYY/MM/DD
0	ISSUED FOR 1st SUBMISSION	2024/04/13

ARBORIST

MATTHEW CAMPBELL, OALA, CSLA
CERTIFIED ARBORIST (ISA 0N-3008-A),
TRAG

Project: **ARGO ALLOA (BT) CORPORATION - TREE PRESERVATION PLAN TOWN OF CALEDON**

Drawing: **TREE PRESERVATION DETAIL PLAN**

CROZIER CONSULTING ENGINEERS

Drawn By	K.C.	Design By	K.C./M.C.	Project	912-7136
Check By	M.C.	Check By		Drawing	TPP-4