



February 3, 2025

Mayfield Golf Course Inc.

c/o Matthew Peticca

Project Coordinator

Geranium

Email: matthewp@geranium.com

**RE: MAYFIELD GOLF COURSE AND SOUTH LANDS
WASTE MANAGEMENT ASSESSMENT**

Dear Matthew,

BA Group is retained by Mayfield Golf Course Inc. and Tullamore Industrial GP Limited PIN 143470069 to provide transportation consulting services in relation to the proposed residential subdivision located at 12580 & 12552 Torbram Road in the Town of Caledon. A Draft Plan of Subdivision application has been made to the Town for the proposed development.

A report was previously prepared by BA Group for the proposed development, dated October 4, 2024 (the "2024 TIS"). It's understood that following a meeting held with the Town of Caledon, Region of Peel, and other agencies on January 7, 2025, the Town has requested the completion of a Waste Management Plan ("WMP") which should confirm that the road network accommodates garbage truck manoeuvring requirements and identifies the designated garbage pickup locations.

A concept road plan was prepared by BA Group and attached as an appendix in the 2024 TIS. Cross sections within the concept road plan are in accordance with those outlined in the Transportation Study prepared for the Mayfield-Tullamore Secondary Plan, dated August 30, 2024, and Town of Caledon standard road cross sections. Furthermore, cul-de-sacs, intersection radii, and horizontal curve radii are designed in accordance with the Town of Caledon Development Standards Manual. It should be noted that this is a concept road plan only and that the road network will be subject to detailed design and may change as the Mayfield-Tullamore Secondary Plan progresses.

Further to the above, a series of vehicle manoeuvring diagrams for a Peel Region waste collection vehicle were included on the concept road plan to demonstrate the manoeuvring at a typical intersection, elbow, and cul-de-sac.

BA Group have been advised that garbage pick up locations were confirmed with Peel Region Waste Management Staff on January 23, 2025. Based on these discussions, conceptual waste collection pick up locations for detached and townhouse lots are shown in **Appendix A**, overlaid on the abovementioned concept road plan. For each pick up location, two bins are shown drawn to scale based on bin sizes published on the Peel Region website as follows:

- Organics Bin: 510mm wide by 640mm deep
- Large Recycling Bin or Large Garbage Bin (collection on alternating weeks): 690mm wide by 890mm deep.

As mentioned above, it should be noted that this is conceptual only and that the road network will be subject to detailed design and may change as the Mayfield-Tullamore Secondary Plan progresses. Waste collection pick up locations will also

be dependent on the location of elements such as driveways, mailboxes and fire hydrants which will be determined at detailed design.

Waste collection for the medium density, commercial, elementary school and firehall blocks will be confirmed at the Site Plan stage.

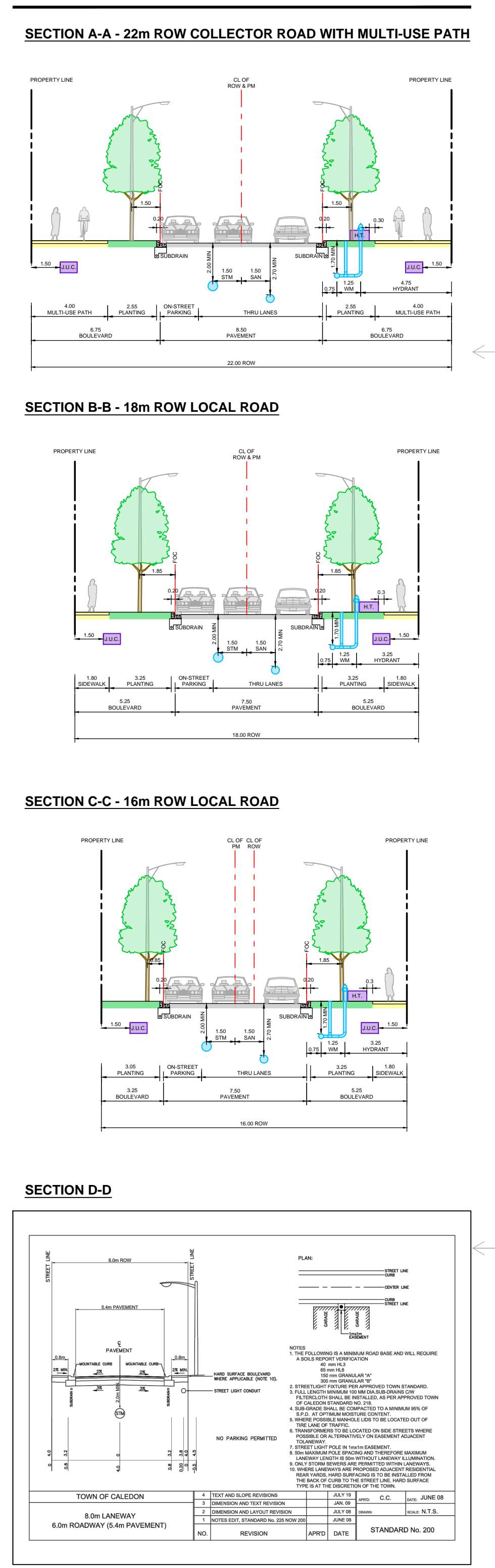
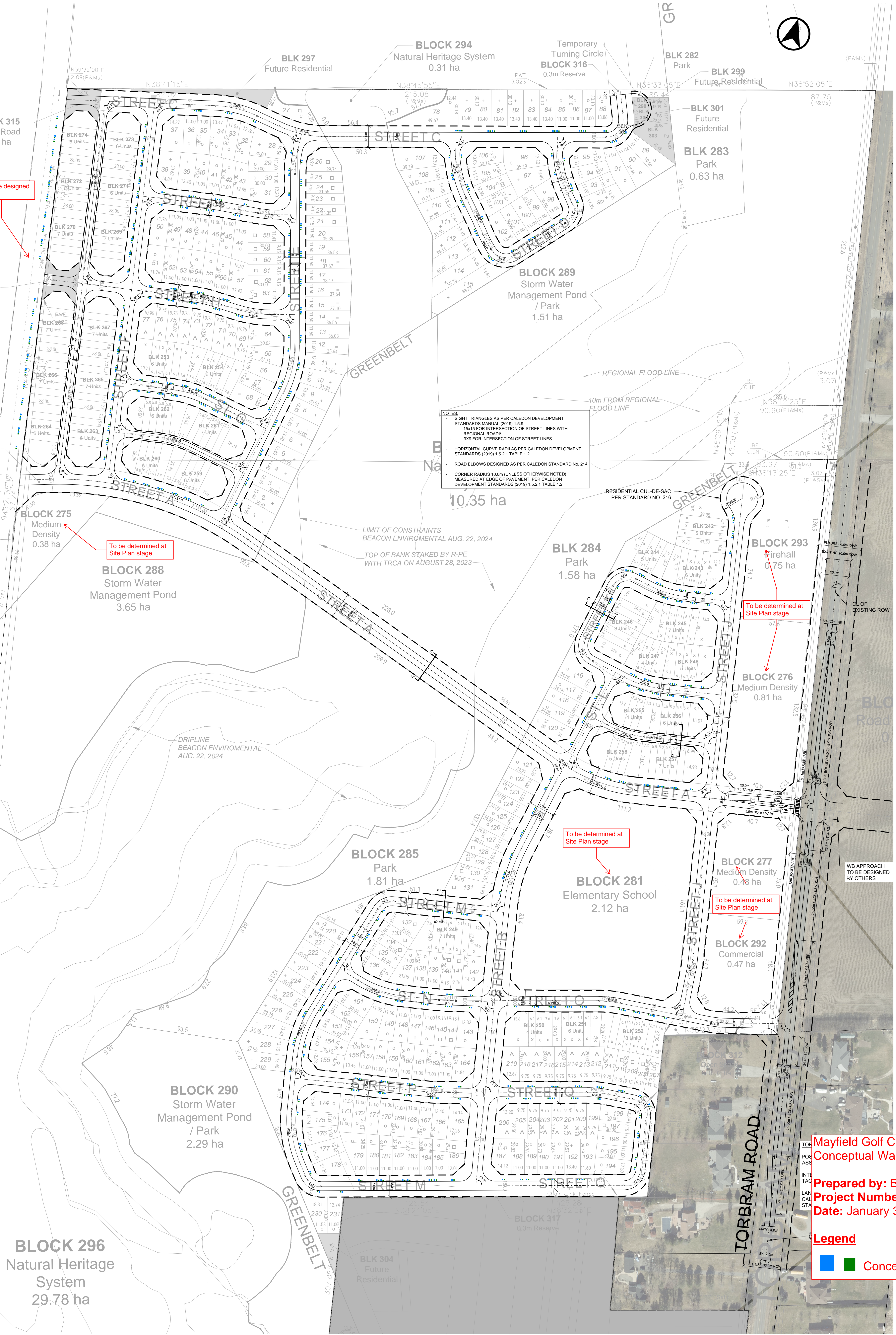
Sincerely,

BA Consulting Group Ltd.

A handwritten signature in black ink, appearing to read "L. Richardson".

Luke J. Richardson, P.Eng.
Associate

Appendix A: Conceptual Waste Collection Pick Up Locations



NOTES

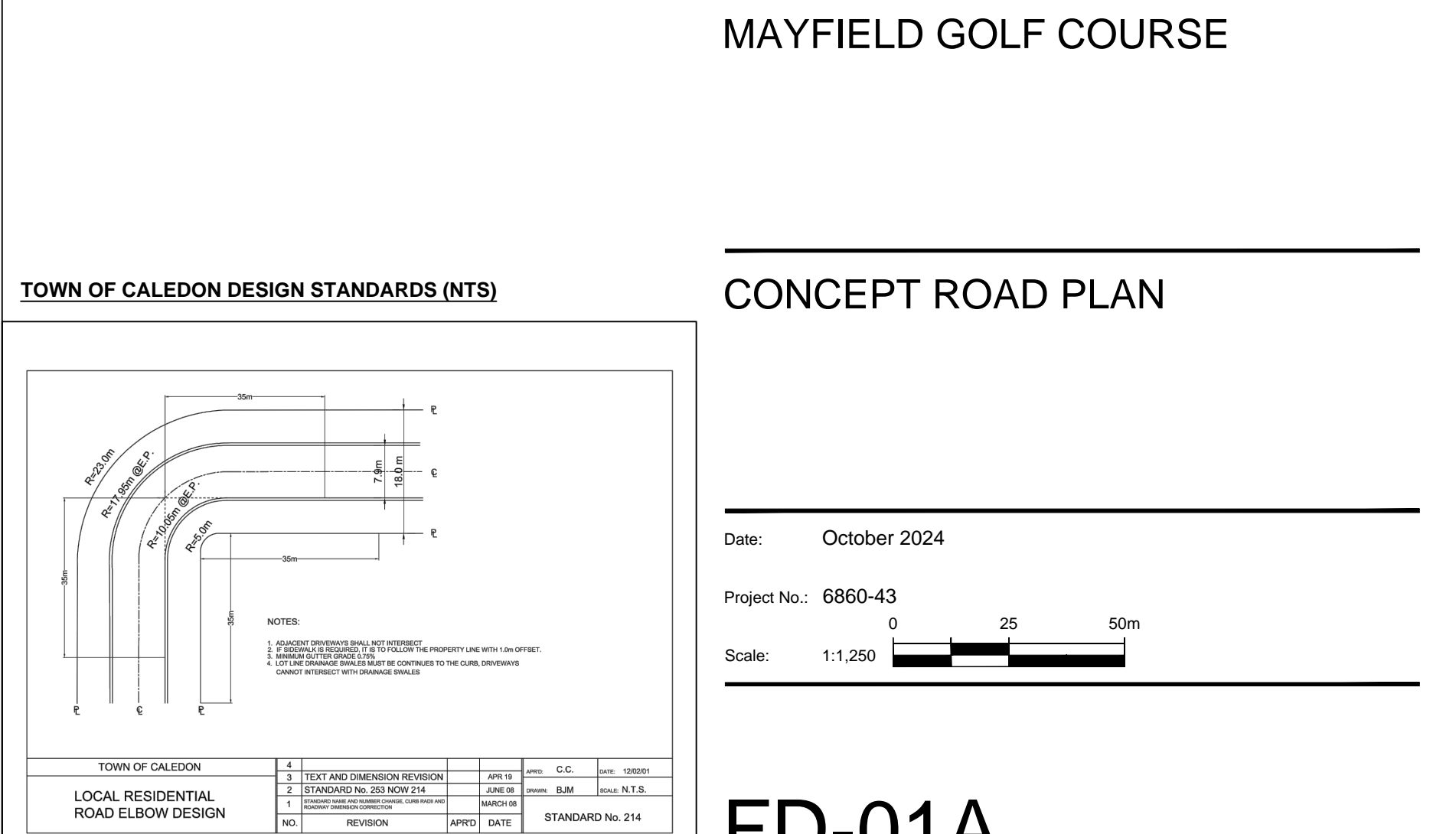
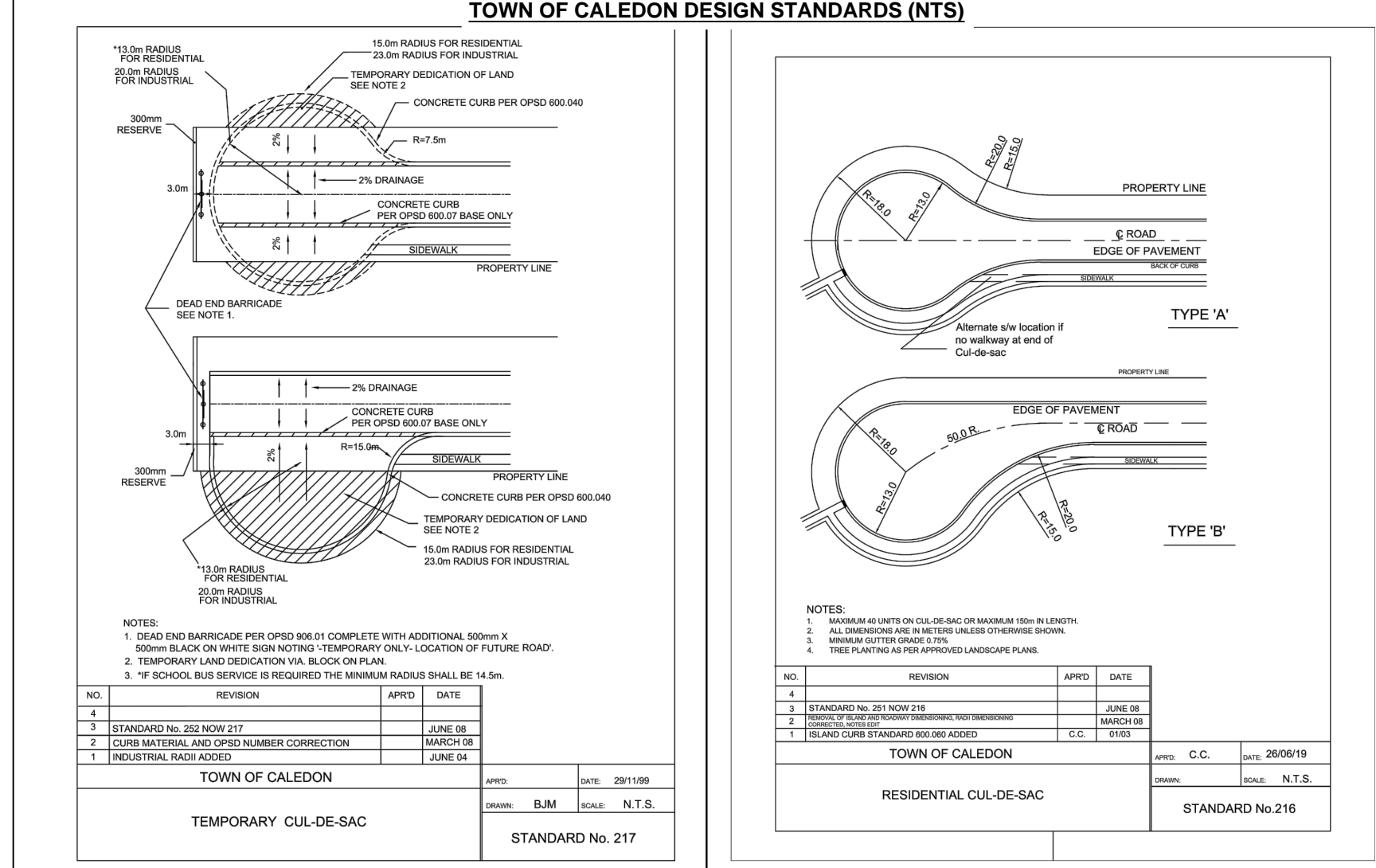
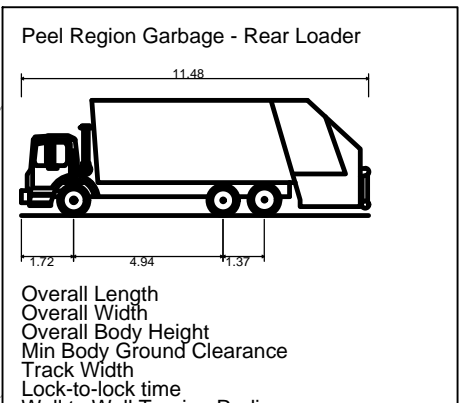
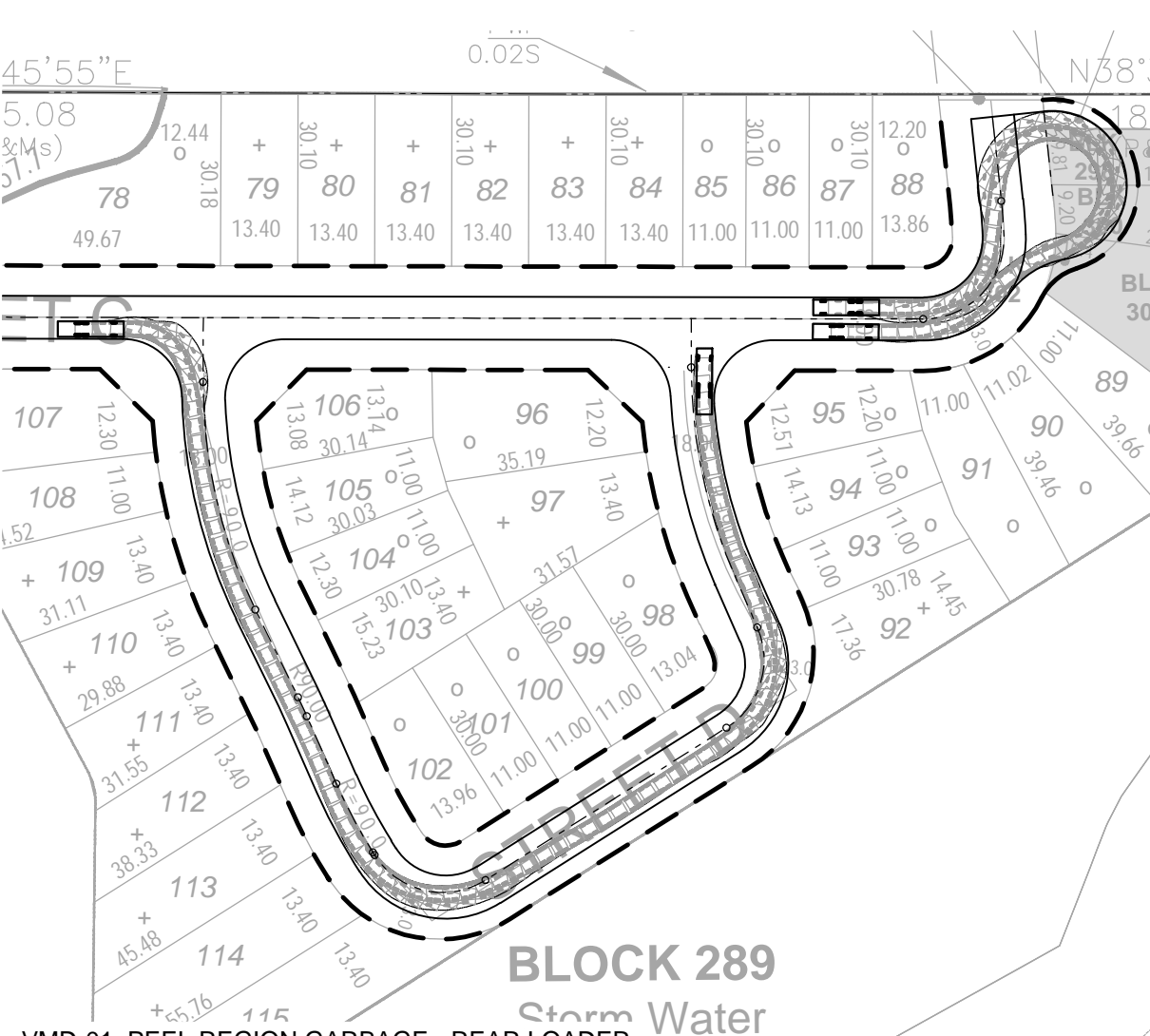
- ▲ TRIANGLES AS PER CALEDON DEVELOPMENT STANDARDS MANUAL (2019), 1.5.9
- 15x15 FOR INTERSECTION OF STREET LINES WITH REGIONAL ROADS
- 9x9 FOR INTERSECTION OF STREET LINES
- HORIZONTAL CURVE RADII AS PER CALEDON DEVELOPMENT STANDARDS (2019) 1.5.2.1 TABLE 1.2
- ROAD ELBOWS DESIGNED AS PER CALEDON STANDARD No. 214
- CORNER RADIUS 10.0m (UNLESS OTHERWISE NOTED) MEASURED AT EDGE OF PAVEMENT, PER CALEDON DEVELOPMENT STANDARDS (2019) 1.5.2.1 TABLE 1.2

Mayfield Golf Course and South Lands Conceptual Waste Collection Pick Up Locations

Prepared by: BA Group
Project Number: 6860-43
Date: January 30, 2025

Legend

- Conceptual Pick Up Location (2 x bins)



BA Group

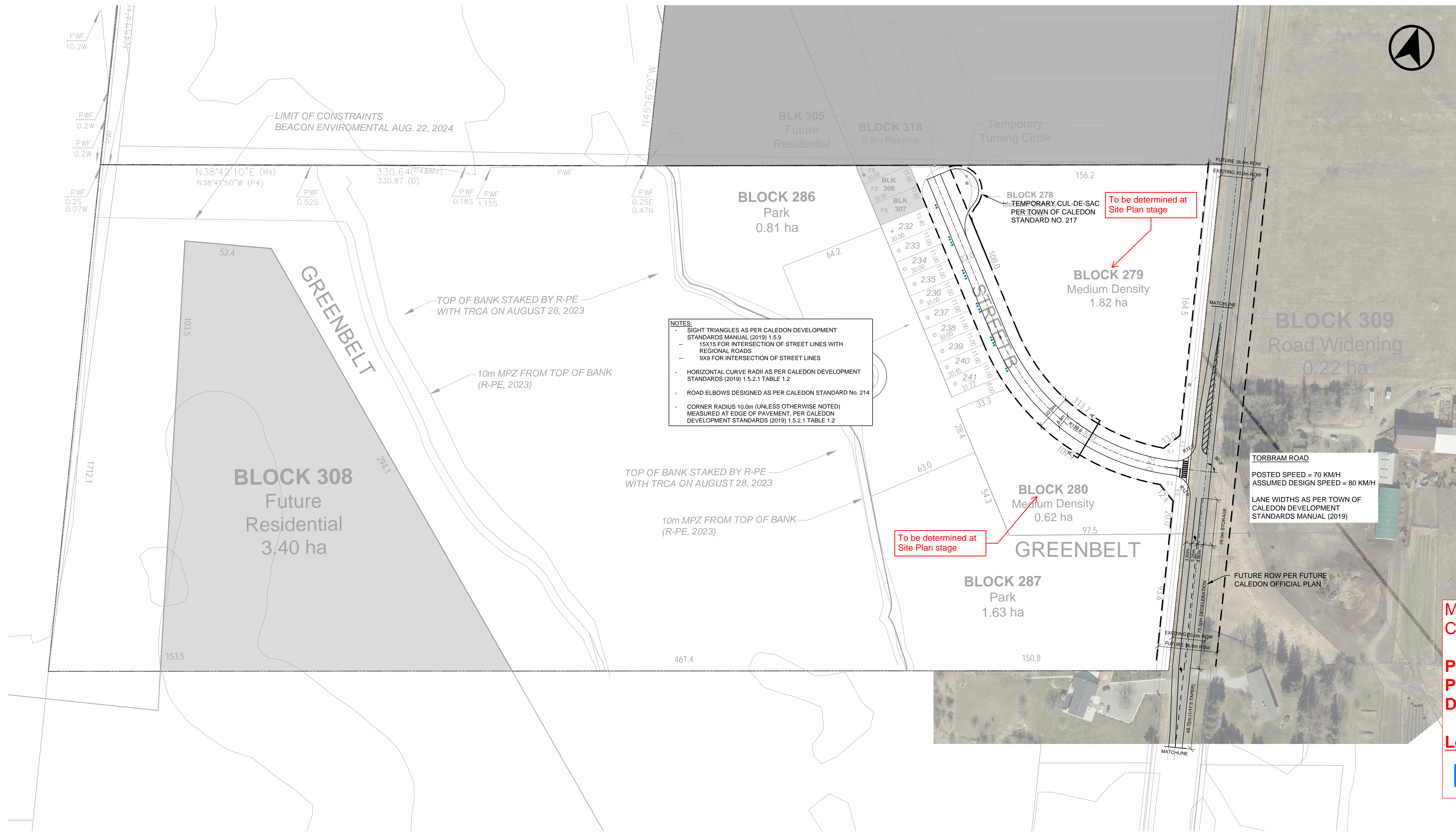
BA Consulting Group Ltd.
 300 - 45 St. Clair Ave. W.
 Toronto, ON M6E 1R9
 Tel: 416-961-7110
 www.ba-group.com

MAYFIELD GOLF COURSE

CONCEPT ROAD PLAN

Date: October 2024
 Project No.: 6860-43
 Scale: 1:1,250

FD-01A

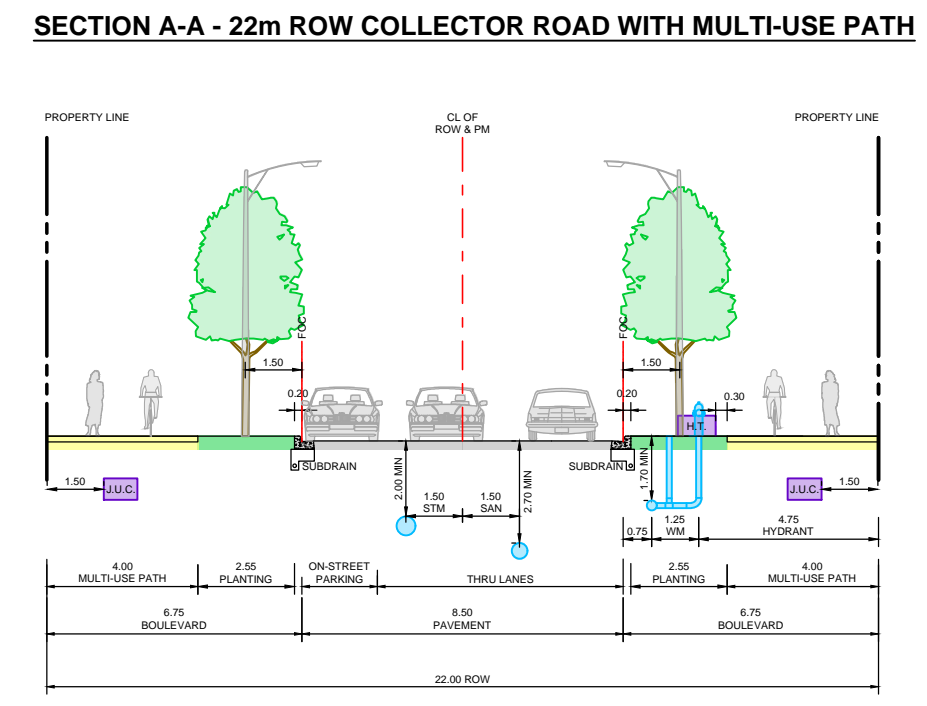


NOTES:

- SIGHT TRIANGLES AS PER CALEDON DEVELOPMENT STANDARDS MANUAL (2019) 1.5.9
- 15X15 FOR INTERSECTION OF STREET LINES WITH REGIONAL ROADS
- 9X9 FOR INTERSECTION OF STREET LINES
- HORIZONTAL CURVE RADII AS PER CALEDON DEVELOPMENT STANDARDS (2019) 1.5.2.1 TABLE 1.2
- ROAD ELBOWS DESIGNED AS PER CALEDON STANDARD No. 214
- CORNER RADIUS 10.0m (UNLESS OTHERWISE NOTED) MEASURED AT EDGE OF PAVEMENT, PER CALEDON DEVELOPMENT STANDARDS (2019) 1.5.2.1 TABLE 1.2

To be determined at Site Plan stage

To be determined at Site Plan stage



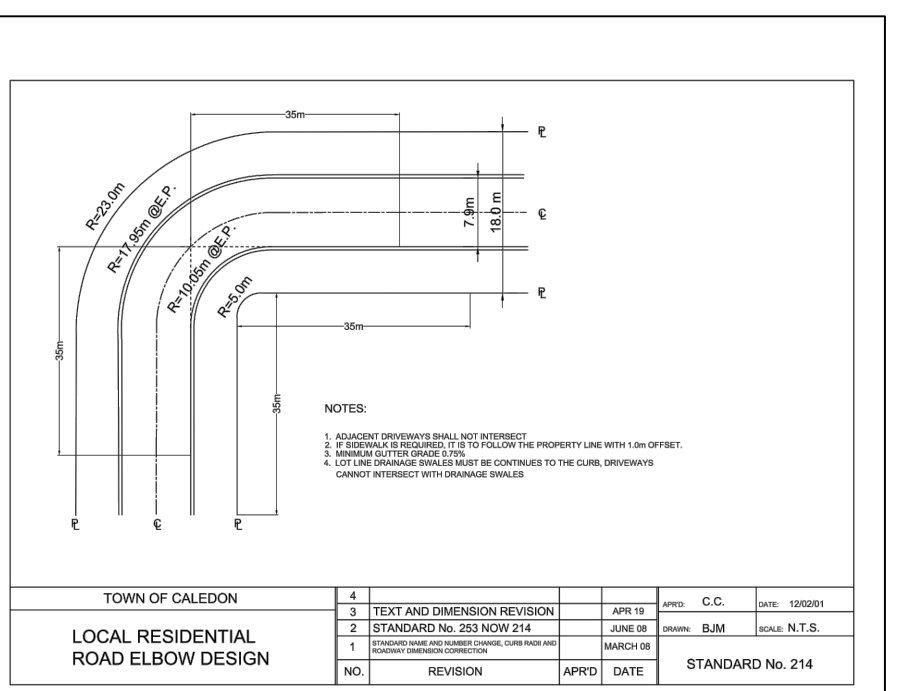
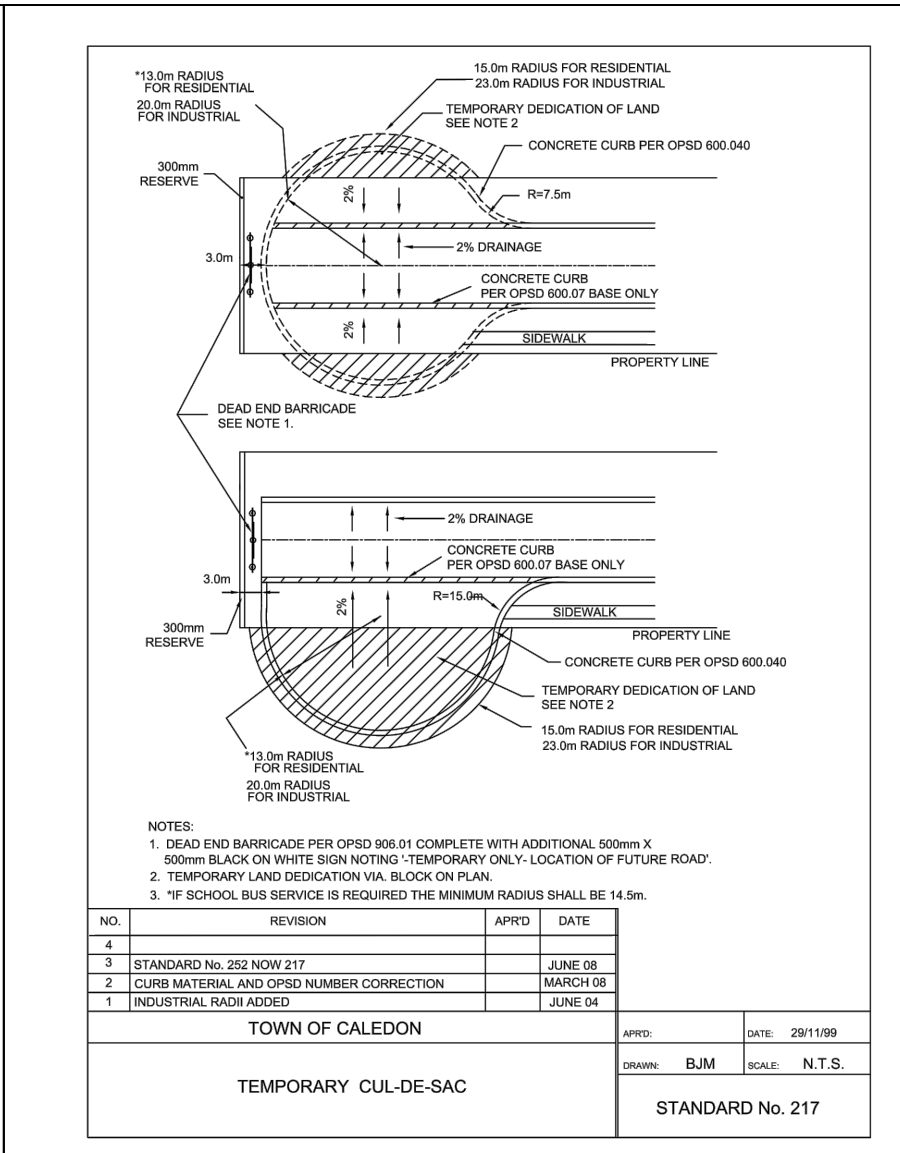
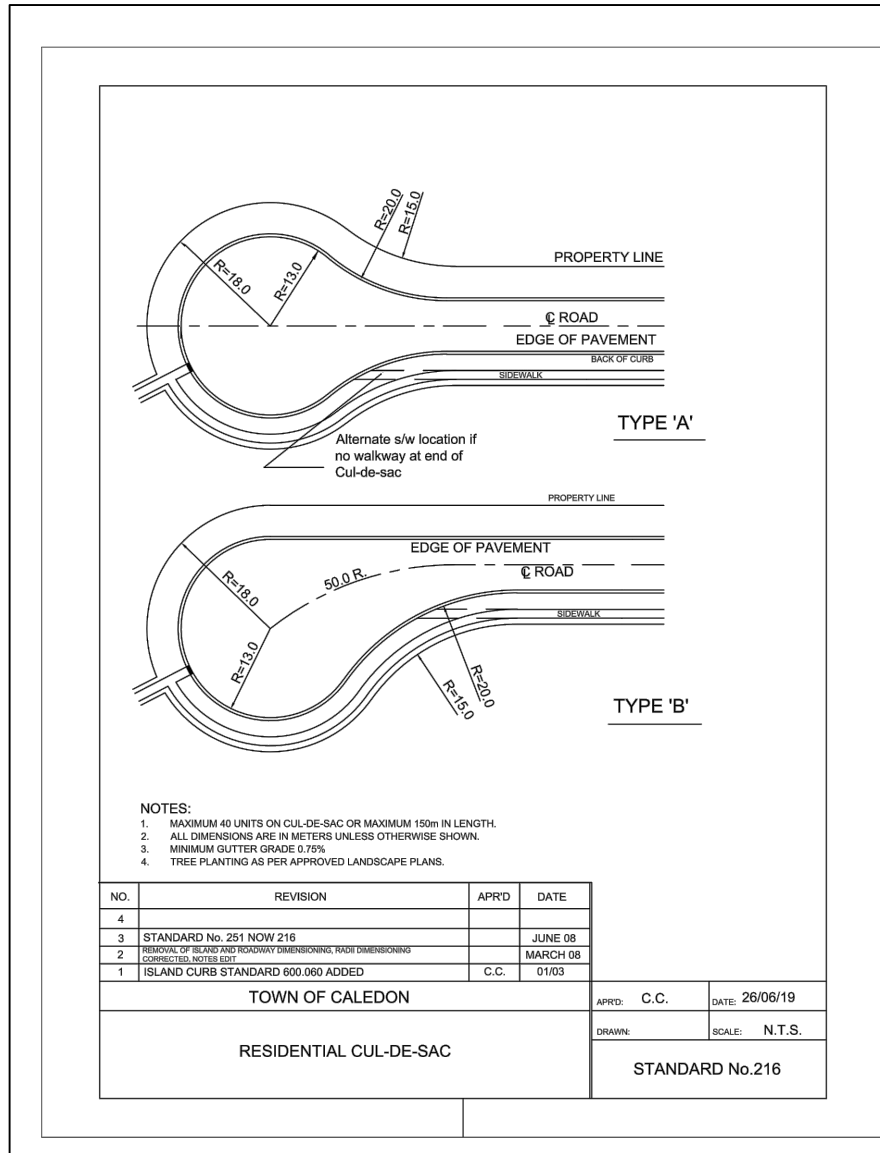
TORBRAM ROAD
 POSTED SPEED = 70 KM/H
 ASSUMED DESIGN SPEED = 80 KM/H
 LANE WIDTHS AS PER TOWN OF CALEDON DEVELOPMENT STANDARDS MANUAL (2019)

Mayfield Golf Course and South Lands
 Conceptual Waste Collection Pick Up Locations

Prepared by: BA Group
 Project Number: 6860-43
 Date: January 30, 2025

Legend
■ ■ Conceptual Pick Up Location (2 x bins)

TOWN OF CALEDON DESIGN STANDARDS (NTS)



BA Group
 BA Consulting Group Ltd.
 1000-95 St. Clair Ave. W.
 Toronto ON M6V 1N6
 Tel: 416-961-7110
 www.bagroup.com

MAYFIELD GOLF COURSE

CONCEPT ROAD PLAN

Date: October 2024
 Project No.: 6860-43
 Scale: 1:1,250