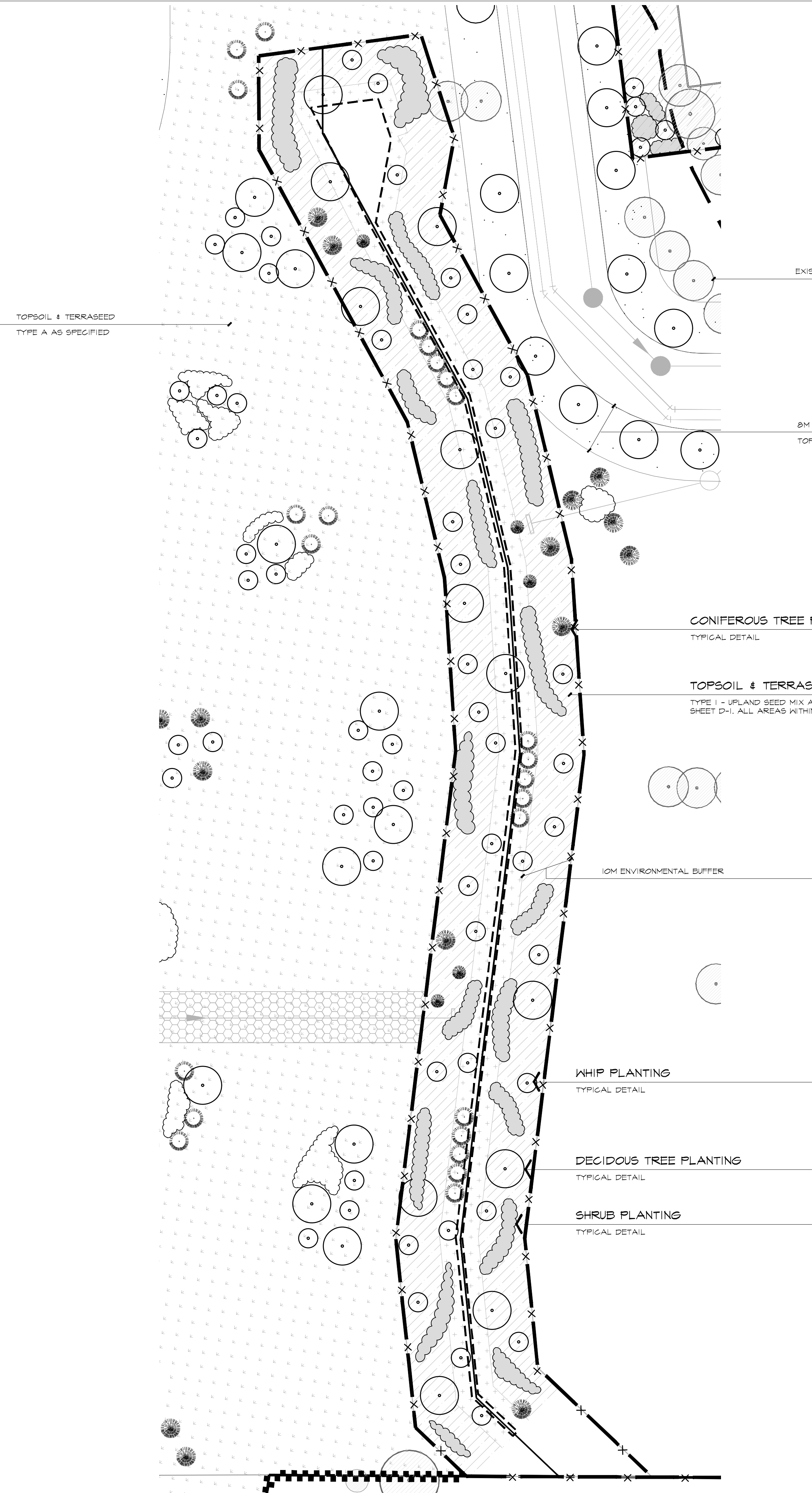


TOWN OF CALEDON
PLANNING
RECEIVED
March 28, 2024



BUFFER 'B' PLANTING CALCULATIONS:

TOTAL PLANTABLE AREA FOR TREES & SHRUBS: (BE TWEEN TOP OF BANK AND 10m BUFFER LIMIT)	3,348 m ²
TOTAL PLANTABLE AREA:	4,894 m ²
COVERAGE:	75% → 3,670 m ²
TOTAL TREES (5m O.C.):	62
TOTAL SHRUBS (1m O.C.):	1,440
AREA OF COVERAGE (m ²):	1,550
AREA OF COVERAGE (m ²):	1,440
PROVIDED COVERAGE:	2,990 m²

REFERENCE PLANT LIST

- COMMON NAME
- DECIDUOUS TREES**
- MARMO MAPLE
 - RED MAPLE
 - LEGACY SUGAR MAPLE
 - MAIDENHAIR TREE
 - SHADEMASTER HONEY-LOCUST
 - TULIP TREE
 - BLOODGOOD LONDON PLANETREE
 - WHITE OAK
 - VALLEY FORGE ELM
 - ACGLADE ELM
 - BASSWOOD
- ORNAMENTAL TREES**
- ALLEGHENY SERVICEBERRY
 - EASTERN REDBUD
 - GHANTICLEER PEAR
- CONIFEROUS TREES**
- WHITE FIR
 - BLUE COLORADO SPRUCE
 - EASTERN WHITE PINE
- BROADLEAF EVERGREENS**
- BLONDY EUONYMUS
- CONIFEROUS SHRUBS**
- ARGADIA JUNIPER
 - DENSE YEW
- DECIDUOUS SHRUBS**
- ARCTIC FIRE DOGWOOD
 - RED RUGOSA ROSE
 - BLUE ARCTIC WILLOW
 - DART'S GOLD NINEBARK
 - GRO-LOW FRAGRANT SUMAC
 - GOLDFLAME SPIREA
 - SILVER EDGE DOGWOOD
- PERENNIALS AND GRASSES**
- KARLEY ROSE FOUNTAIN GRASS
 - STELLA D'ORO DAYLILY
 - KARL FOERSTER FEATHER REED GRASS
 - AUTUMN JOY SEDUM
 - PATRIOT HOSTA

SEE SHEET D-1 FOR MASTER PLANT LIST

NATURALIZATION SPECIFICATIONS
ON SHEET BD-1

SEEDED AREAS NOT TO BE MOWED

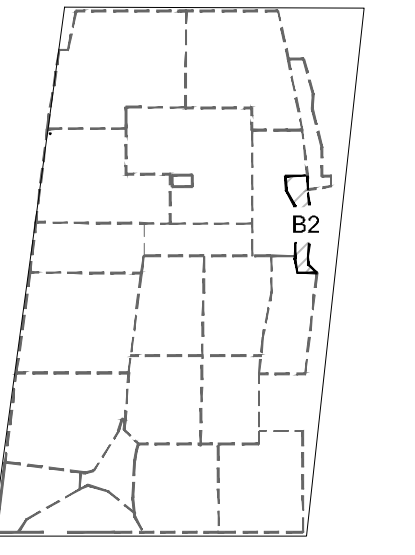
NATURALIZATION SEEDING

LOCATION OF SEED TYPES ARE NOTED ON PLAN

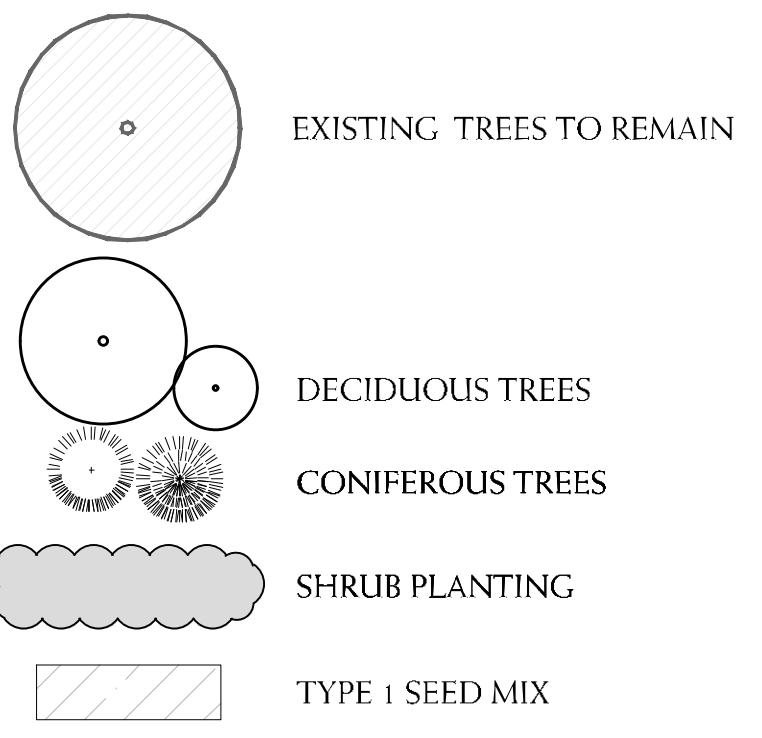
SEED WITH THE FOLLOWING SEED MIXTURES AS SUPPLIED BY ONTARIO SEED COMPANY (1-800-465-5849) OR APPROVED EQUAL

TYPE 1	UPLAND:	NURSE CROP
	CUSTOM UPLAND MIX	ANNUAL RYE GRASS (<i>Lolium multiflorum</i>) SEED RATE: 28kg/ha
	CANADIAN WILD RYE (<i>Elymus canadensis</i>)	15%
	BOTTLEBRUSH GRASS (<i>Elymus hystrix</i>)	25%
	VIRGINIA WILD RYE (<i>Elymus virginicus</i>)	15%
	FOX SEDGE (<i>Carex vulpinoidea</i>)	15%
	COMMON MILKWEED (<i>Asclepias syriaca</i>)	5%
	WILD BERGAMOT (<i>Monarda fistulosa</i>)	5%
	NEW ENGLAND ASTER (<i>Aster novae-angliae</i>)	5%
	EARLY GOLDENROD (<i>Solidago juncea</i>)	5%
	BROWN EYED SUSAN (<i>Rudbeckia triloba</i>)	5%
	EVENING PRIMROSE (<i>Oenothera biennis</i>)	5%
	SEED RATE: 22-25 kg/ha	

REFERENCE PLAN



LEGEND



BASE INFORMATION OBTAINED ELECTRONICALLY FROM (JOB NO.; TEL.)

no.	date	version	by
V2.	MAR 12 2024	ISSUED FOR 30% LANDSCAPE PLANS - OPA / ZBA	AV/ED
V1.	FEB 24 2021	ISSUED FOR FIRST SUBMISSION	RS/LK

All information hereon to be checked and verified at the site and any discrepancies must be reported to and clarified by the landscape architect before commencing work. All drawings, specifications, details, digital information, etc., prepared by the landscape architect are instruments of service and as such are his property and must be returned at his request.

ALEXANDER BUDREVICS
LANDSCAPE ARCHITECTS
885 Don Mills Road, Second Tower, Suite 212
Toronto, Ontario, Canada, M3C 1W3
416.444.5201
www.budrevics.com

project SP No. PRE-20-0096
PROPOSED INDUSTRIAL DEVELOPMENT
12862 & 12668 DIXIE ROAD
CALEDON, ONTARIO
QUADREAL PROPERTY GROUP & TRIBAL PARTNERS CANADA INC.

BUFFER 'B' LANDSCAPE PLAN

date	JANUARY 4, 2021	drawn	KM
scale*	1:400	file	3415 B2 V2-240312
direction		project no.	3415
		sheet no.	B-2

*NOTED SCALE IS APPLICABLE ONLY WHEN PRINTED ON ARCH D (24"X36") SIZE SHEET