

Humberking Draft Plan of Subdivision Arborist Report

Prepared For:

**Humberking (1) Developments Limited
Humberking (IV) Developments Limited**

Prepared By:

Beacon Environmental Limited

Date:

2024-10-09

Project:

214476.1



GUIDING SOLUTIONS IN THE NATURAL ENVIRONMENT

Table of Contents

	page
1. Introduction	1
2. Methods	1
3. Results	2
3.1 Humberking West	2
3.1.1 Individually Tagged Trees	3
3.1.2 Trees Located on Adjacent Private Properties	4
3.1.3 Trees Co-owned Between Subject Lands and Adjacent Private Properties	4
3.1.4 Municipal Road Allowance Trees	4
3.1.5 Trees Co-owned between Subject Lands and Municipal Road Allowance	5
3.2 Humberking East	5
3.2.1 Individually Tagged Trees	5
3.2.2 Tree Located Within Adjacent Private Properties	6
3.2.3 Municipal Road Allowance Trees	6
3.2.4 Trees Co-owned between subject lands and Municipal Road Allowance	6
3.2.5 Canadian Pacific Railway Right-of-Way Trees	6
3.2.6 Trees Co-owned between Subject Lands and Canadian Pacific Railway Right-of-Way	6
3.3 Tallied Trees	7
3.3.1 Humberking West	7
3.3.2 Humberking East	7
4. Impact Assessment and Recommendations	8
4.1 Humberking West Tree Removals	8
4.1.1 Individually Tagged Trees	8
4.1.2 Tallied Trees	10
4.2 Humberking East Tree Removals	10
4.2.1 Individually Tagged Trees	10
4.2.2 Tallied Trees	11
4.3 Trees Recommended for Removal Due to Condition	11
4.3.1 Humberking West Trees Recommended for Removal	11
4.3.2 Humberking East Trees Recommended for Removal	12
4.4 Trees Recommended for Preservation	13
4.5 Tree Protection	13
4.6 Timing of Tree Removals	15
5. Tree Replacement	16
5.1 Humberking West Tree Compensation Calculations	16
5.2 Humberking East Tree Compensation Calculations	17
5.3 Tree Replacement Recommendations	17
6. References	19

Figures

Figure 1A. Site Location and Treed Resources – Humberking Westafter page 2
Figure 1B. Site Location and Treed Resources – Humberking Eastafter page 2

Tables

Table 1. Humberking West – Individually Tagged Trees 3
Table 2. Humberking East – Individually Tagged Trees 5
Table 3. Humberking West - Tallied Trees..... 7
Table 4. Humberking East - Tallied Trees..... 7
Table 5. Humberking West Tree Removals 8
Table 6. Humberking East Tree Removals 10
Table 7. Minimum TPZ Distances 14
Table 8. Humberking West Compensation Calculations Based on Town Requirements 16
Table 9. Humberking East Compensation Calculations Based on Town Requirements 17
Table 10. List of Recommended Replacement Tree Species for Planting..... 18

Appendices

- Appendix A. Limitations of Tree Assessment
- Appendix B. Tree Inventory Table
- Appendix C. Tree Inventory and Preservation Plan (TIPP)

Report Versions Issued

Version	Date	Revisions
1.	July 2024	First Submission
2.	October 2024	Second Submission

1. Introduction

Beacon Environmental Limited (Beacon) was retained by Humberking (I) Developments Limited and Humberking (IV) Developments Limited to prepare an Arborist Report in support of a Draft Plan of Subdivision Application for the following Draft Plan area, hereafter referred to as the subject lands (**Figures 1A and 1B**):

- **Humberking Draft Plan of Subdivision (PRE-2023-0080) East and West Lands:** Humberking (I) Developments Limited and Humberking (IV) Developments Limited.

The subject lands are legally described as the East Half of Lot 11 Concession 4 and Part of Lots 11 and 12, Concession 5 respectively. The subject lands are generally located along Humber Station Road north of King Street.

This Arborist Report builds upon the tree inventory undertaken by Beacon in support of the 2023 Caledon Station Comprehensive Environmental Impact Study and Management Plan (CEISMP; **Figures 1A and 1B**). This Report was prepared in accordance with the *Terms of Reference: Tree Preservation* (Town of Caledon, undated). Based on comments received on the First Submission, Beacon understands that this undated Terms or Reference supersedes the 2020 version.

The purpose of this Arborist Report is to:

- Identify and describe individual trees and tree groupings on the subject lands;
- Assess potential impacts to individual trees and tree groupings resulting from the proposed development including requirements for tree removals; and
- Provide recommendations for tree preservation and protection.

2. Methods

Tree inventory data were collected on September 15 and 29, 2023 by a Beacon arborist certified by the International Society of Arboriculture (ISA). In accordance with the Towns guidelines, the inventory included trees with a minimum of 10 cm DBH (diameter measured at breast height) on the subject lands and neighbouring private properties, and all trees (i.e., any size) located within the Municipal Road Allowance (MRA) or otherwise public lands (i.e., Canadian Pacific Railway Right-of-Way) on and within 6 m of proposed development limits. In instances where trees occurred in naturalized clumps, hedgerows or groups, trees were tallied by species and size class (i.e., 5 cm to 10 cm, and 11 cm to 20 cm DBH). The diameter for multi-stemmed trees that split below DBH was determined by taking the square root of the sum-of-squares of each stem's DBH.

In general, individual trees ≥ 10 cm DBH were tagged with numbered aluminum forestry tags and their locations were recorded using an EOS Arrow 100 GNSS Receiver with submeter accuracy. Trees located on adjacent properties were not tagged but were assessed based on observations from the subject lands. For each tree, the following information was recorded:

- Species;
- Trunk DBH (measured 1.4 m above grade);
- Health condition; and
- Structural condition rating.

Each tree was assigned a condition rating of good, fair, poor, or dead, based on the following criteria:

- **Poor** – Severe dieback, significant lean, missing leader, major defects, significant decay and/or disease presence;
- **Fair** – Moderate dieback and/or lean, limb defects, multiple stems, moderate foliage damage from stress;
- **Good** – Healthy vigorous growth, minor visible defects or damage; and
- **Dead** – No live growth.

Tree condition was assessed based on the presence and severity of flaws, damage, evidence of pests or diseases, structural condition, dead or dying branches, or other indicators of decline. Limitations of the assessment are summarized in **Appendix A**.

3. Results

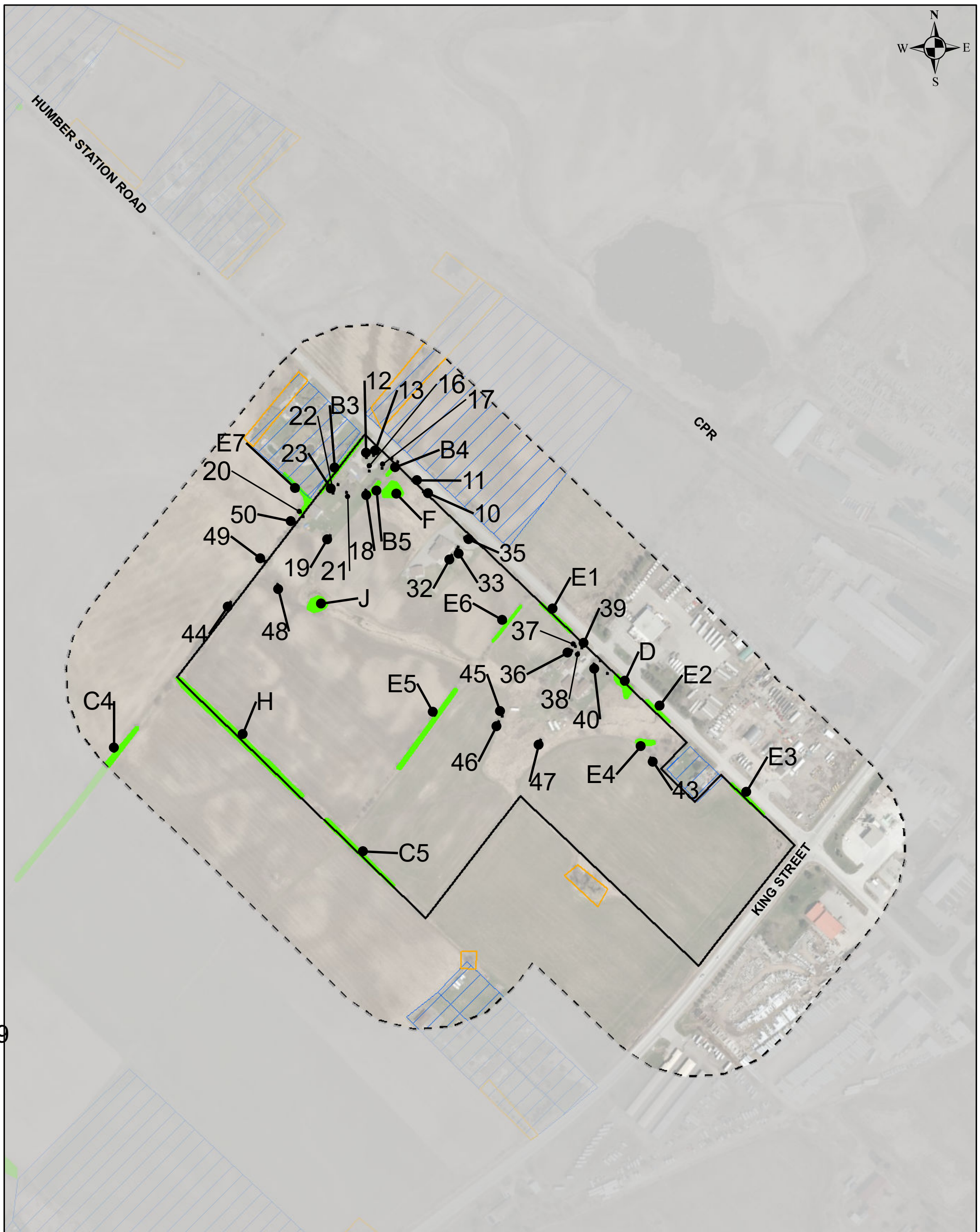
A total of 475 trees were inventoried and assessed on and adjacent to the subject lands. All inventoried tree data (i.e., individual trees and tree groups) are presented in the tree inventory tables provided in **Appendix B**. Locations of all inventoried trees are also shown in **Appendix B** (TIPP).

The 475 trees include 285 individually tagged trees and 190 tallied trees distributed among six (6) tree groups (Tree Groups A to F).

Of the 285 individually tagged trees, 233 are located within the Humberking West property and 52 are located within the Humberking East property. Of the 190 tallied trees, 167 (Tree Groups A to D) are located within Humberking West property and 23 (Tree Groups E and F) are located within Humberking East property.

3.1 Humberking West

Of the 233 individually tagged trees located within the Humberking West property, 160 are located on the subject lands, 12 are located within the adjacent private properties (0 and 14206 Humber Station Road, and 0 King Street), 19 are co-owned with adjacent private properties, 17 are located within the MRA (Humber Station Road), and 25 are co-owned with the MRA.



LEGEND

- HUMBERKING WEST DRAFT PLAN AREA
- STUDY AREA
- PARCELS NOT ACCESSIBLE
- TREE GROUPINGS
- INDIVIDUAL TREES (APPROXIMATE LOCATION)
(FOR TAG NUMBER - PLEASE SEE ARBORIST REPORTS)
- C1 TREE GROUPING NUMBER

ADDITIONAL TREES INVENTORIED IN SUPPORT OF DRAFT PLAN OF SUBDIVISION (APPROXIMATE LOCATION)



HUMPHRIES PLANNING GROUP INC.
218 CHRIBLEA ROAD, SUITE 103, VAUGHAN, ON L4R 0G0, L4L 6B6
TEL: (905) 294-7876, FAX: (905) 294-8079
www.humphriesplanning.com



Arborist Report
Humberking Draft Plan of Subdivision
Caledon Station Secondary Plan Area

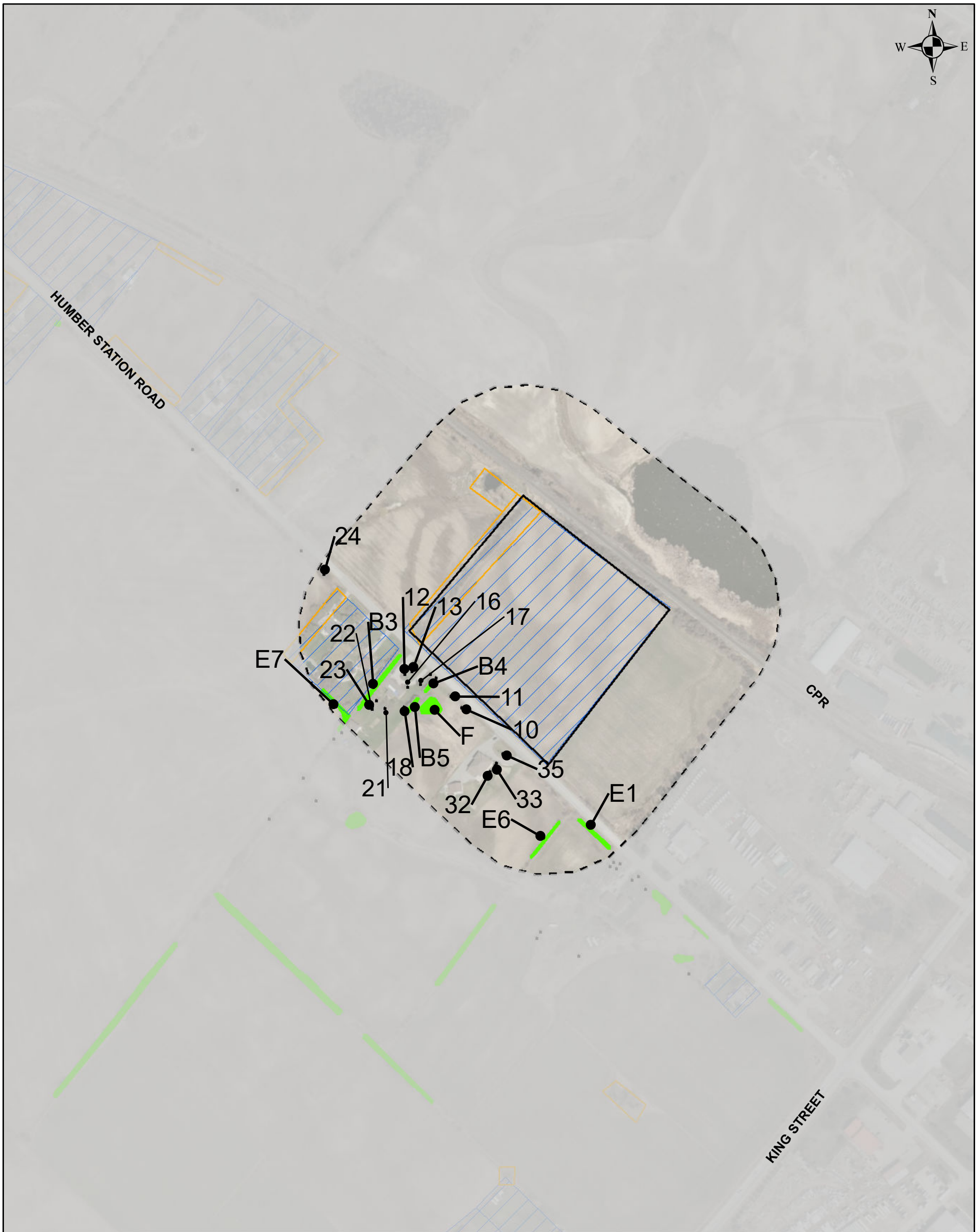
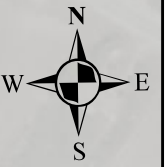
PROJECT No. 214476

FIGURE 1A

SITE LOCATION AND TREED RESOURCES
HUMBERKING WEST

June 2024

Scale 1:4,000



LEGEND

- HUMBERKING EAST DRAFT PLAN AREA
- STUDY AREA
- PARCELS NOT ACCESSIBLE
- TREE GROUPINGS
- INDIVIDUAL TREES (APPROXIMATE LOCATION)
(FOR TAG NUMBER - PLEASE SEE ARBORIST REPORTS)
- C1 TREE GROUPING NUMBER
- ADDITIONAL TREES INVENTORIED IN SUPPORT OF DRAFT PLAN OF SUBDIVISION (APPROXIMATE LOCATION)



Arborist Report
Humberking Draft Plan of Subdivision
Caledon Station Secondary Plan Area

PROJECT No. 214476

FIGURE 1B

SITE LOCATION AND TREED RESOURCES
HUMBERKING EAST

3.1.1 Individually Tagged Trees

Individually tagged trees located on the Humberking West property are presented in **Table 1**.

Table 1. Humberking West – Individually Tagged Trees

Botanical Name	Common Name	Quantity
<i>Acer negundo</i>	Manitoba Maple	86
<i>Tilia americana</i>	Basswood	13
<i>Juglans nigra</i>	Black Walnut	7
<i>Picea pungens</i>	Colorado Blue Spruce	7
<i>Populus tremuloides</i>	Trembling Aspen	6
<i>Acer saccharinum</i>	Silver Maple	5
<i>Picea glauca</i>	White Spruce	4
<i>Acer platanoides</i>	Norway Maple	4
<i>Fraxinus pennsylvanica</i>	Green Ash	4
<i>Pinus sylvestris</i>	Scots Pine	4
<i>Robinia pseudoacacia</i>	Black Locust	3
<i>Malus pumila</i>	Common Apple	2
<i>Morus alba</i>	White Mulberry	2
<i>Populus deltoides</i>	Eastern Cottonwood	2
<i>Salix euxina</i>	Crack Willow	2
<i>Salix babylonica</i>	Weeping Willow	2
<i>Prunus avium</i>	Sweet Cherry	2
<i>Salix alba</i>	White Willow	1
<i>Quercus rubra</i>	Northern Red Oak	1
<i>Betula papyrifera</i>	Paper Birch	1
<i>Pyrus communis</i>	Common Pear	1
<i>Catalpa speciosa</i>	Northern Catalpa	1
Total		160

As per the results presented in **Table 1**, over half (~54%) of the inventoried trees within the Humberking West property consist of Manitoba Maple (*Acer negundo*). A little less than one quarter (~24%) of individually tagged trees consist of Basswood (*Tilia americana*), Black Walnut (*Juglans nigra*), Colorado Blue Spruce (*Picea pungens*), Trembling Aspen (*Populus tremuloides*), and Silver Maple (*A. saccharinum*). The remaining trees (~22%) consist of several to single individuals of White Spruce (*P. glauca*), Norway Maple (*A. platanoides*), Green Ash (*Fraxinus pennsylvanica*), Scots Pine (*Pinus sylvestris*), Black Locust (*Robinia pseudoacacia*), Common Apple (*Malus pumila*), White Mulberry (*Morus alba*), Eastern Cottonwood (*P. deltoides*), Crack Willow (*Salix euxina*), Weeping Willow (*S. babylonica*), Sweet Cherry (*Prunus avium*), White Willow (*S. alba*), Northern Red Oak (*Quercus rubra*), Paper Birch (*Betula papyrifera*), Common Pear (*Pyrus communis*), and Northern Catalpa (*Catalpa speciosa*).

3.1.2 Trees Located on Adjacent Private Properties

The 12 trees located on adjacent private properties (0 Humber Station Road, 14206 Humber Station Road, and 0 King Street) are listed below in decreasing order of abundance:

- Three (3) American Elm that range from 18 cm to 28 cm DBH and that are all in good condition;
- Three (3) Basswood that range from 11 cm to 23 cm DBH and that are all in good condition;
- Two (2) Manitoba Maple that are 25 cm and 35 cm DBH and in fair to good condition;
- One (1) Corkscrew Willow (*Salix matsudana*) that is 35 cm DBH and in fair to good condition;
- One (1) multi-stemmed White Willow with an aggregate DBH of 78 cm DBH that is in good condition;
- One (1) Norway Maple that is 45 cm DBH and in good condition; and
- One (1) Eastern Cottonwood that is 44 cm DBH and dead.

3.1.3 Trees Co-owned Between Subject Lands and Adjacent Private Properties

The 19 trees co-owned with adjacent private properties (0 Humber Station Road, 14042 Humber Station Road, and 0 King Street) are listed below in descending order of abundance:

- Eight (8) Basswood that range from 10 cm to 52 cm DBH and that are all in good condition;
- Four (4) multi-stemmed Common Apple that range from 28 cm to 61 cm in aggregate DBH and that are primarily in fair to good condition;
- Four (4) Manitoba Maple that range from 20 cm to 56 cm DBH and from fair-good to good condition;
- Two (2) Eastern White Cedar (*Thuja occidentalis*) that are 21 cm and 25 cm DBH and in good condition;
- Two (2) American Elm (*Ulmus americana*) that are 14 cm and 77 cm DBH and in good condition;
- One (1) White Spruce that is 55 cm DBH and in good condition; and
- One (1) Norway Maple that is 25 cm DBH and in good condition.

3.1.4 Municipal Road Allowance Trees

The 17 trees located within the MRA of Humber Station Road within Humberking West are composed of 17 Manitoba Maple that range from 8 cm to 28 cm DBH, one is dead, and the remaining range from poor to fair to good condition.

3.1.5 Trees Co-owned between Subject Lands and Municipal Road Allowance

The 25 trees co-owned between the subject lands and the MRA (Humber Station Road) are listed below in descending order of abundance:

- Sixteen (16) Manitoba Maple that range from 9 cm to 38 cm DBH and that are primarily in fair to good condition;
- Five (5) Scots Pine that range from 15 cm to 46 cm DBH and that are primarily in good condition;
- Two (2) White Spruce that are 23 cm and 25 cm DBH, and in good condition;
- One (1) multi-stemmed Norway Maple with an aggregate DBH of 24 cm that is fair to good condition; and
- One (1) multi-stemmed Green Ash with an aggregate DBH of 23 cm that is in poor condition.

3.2 Humberking East

Of the 52 individually tagged trees located within Humberking East property, 28 are located on the subject lands, one (1) is located on an adjacent private property (0 Humber Station Road), eight (8) are located within the MRA (Humber Station Road), one (1) is co-owned between the subject lands and MRA, seven (7) are located within the Canadian Pacific Railway Right-of-Way, and seven (7) are co-owned between the subject lands and Canadian Pacific Railway Right-of-Way.

3.2.1 Individually Tagged Trees

Individually tagged trees located on the subject lands are presented in **Table 2**.

Table 2. Humberking East – Individually Tagged Trees

Botanical Name	Common Name	Quantity
<i>Carya cordiformis</i>	Bitternut Hickory	9
<i>Acer negundo</i>	Manitoba Maple	6
<i>Ulmus americana</i>	American Elm	6
<i>Malus pumila</i>	Common Apple	4
<i>Tilia americana</i>	Basswood	3
Total		28

As per the results presented in **Table 2**, slightly less than one third (~32%) of the inventoried trees within the Humberking East property consist of Bitternut Hickory (*Carya cordiformis*). Over one third (~43%) of inventoried trees consist of Manitoba Maple and American Elm. The remaining (~25%) consist of several to single individuals of Common Apple and Basswood.

3.2.2 Tree Located Within Adjacent Private Properties

One (1) tree was located on the adjacent private property (0 Humber Station Road). It is a multi-stemmed Manitoba Maple with an aggregate DBH of 37 cm that is in fair to good condition.

3.2.3 Municipal Road Allowance Trees

The eight (8) trees located within the MRA (Humber Station Road) are listed below in descending order of abundance:

- Five (5) multi-stemmed Damson Plum (*Prunus domestica*) that range in size from 6 cm to 16 cm in aggregate DBH, and that are primarily in fair to good condition; and
- Three (3) Eastern Red Cedar (*Juniperus virginiana*) that range in size from 11 cm to 12 cm DBH, and in good condition.

3.2.4 Trees Co-owned between subject lands and Municipal Road Allowance

One (1) tree is co-owned with the MRA (Humber Station Road). It is a Manitoba Maple that is 50 cm DBH and in poor to fair condition.

3.2.5 Canadian Pacific Railway Right-of-Way Trees

The seven (7) trees located within the Canadian Pacific Railway Right-of-Way are listed below in descending order of abundance:

- Four (4) Manitoba Maple that range from 25 cm to 35 cm DBH and that are primarily in fair to good condition;
- Two (2) American Elm that are 20 cm and 21 cm DBH and that are both dead; and
- One (1) multi-stemmed Crack Willow that is 35 cm in aggregate DBH and that is in fair to good condition.

3.2.6 Trees Co-owned between Subject Lands and Canadian Pacific Railway Right-of-Way

The seven (7) trees that are co-owned with the Canadian Pacific Railway Right-of-Way are listed below in descending order of abundance:

- Five (5) Manitoba Maple that range from 11 cm to 45 cm DBH and that are all fair to good condition;
- One (1) Basswood that is 49 cm DBH and in good condition; and
- One (1) American Elm that is 11 cm DBH and in good condition.

3.3 Tallied Trees

There is a total of 190 tallied trees distributed among six (6) tree groups (Tree Groups A to F) on the subject lands. Individual tree group data are provided in **Appendix B**.

3.3.1 Humberking West

The 167 tallied trees distributed among four (4) tree groups (Tree Groups A to D) located within the Humberking West property are summarized in **Table 3**.

Table 3. Humberking West - Tallied Trees

Botanical Name	Common Name	Size Class (DBH in cm)				Total
		5 – 10	11 - 20	21 - 30	31 - 45	
<i>Populus tremuloides</i>	Trembling Aspen	70	20	0	0	90
<i>Thuja occidentalis</i>	Eastern White Cedar	0	55	15	0	70
<i>Acer negundo</i>	Manitoba Maple	0	7	0	0	7
Total		70	82	15	0	167

Over half (~54%) of tallied trees that are located within Humberking West consist of Trembling Aspen with the majority (~78%) ranging from 5 cm to 10 cm DBH, and the remaining (~22%) ranging from 11 cm to 20 cm DBH. Approximately (42%) of the tallied trees consist of Eastern White Cedar. The remaining (~4%) of tallied trees consist of Manitoba Maple. Of the 167 tallied trees, 70 (~42%) range from 1 cm to 10 cm DBH, 82 (~49%) range from 11 cm to 20 cm DBH, and the remaining 15 (~9%) range from 21 cm to 30 cm DBH.

3.3.2 Humberking East

The 23 tallied trees distributed among two (2) tree groups (Tree Groups E and F) that are located within the Humberking East property are summarized below in **Table 4**.

Table 4. Humberking East - Tallied Trees

Botanical Name	Common Name	Size Class (DBH in cm)				Total
		5 – 10	11 - 20	21 - 30	31 - 45	
<i>Tilia americana</i>	Basswood	0	0	5	5	10
<i>Prunus domestica</i>	Damson Plum	0	8	0	0	8
<i>Acer negundo</i>	Manitoba Maple	0	4	1	0	5
Total		0	12	6	5	23

Over one third (~43%) of tallied trees that are located within Humberking East consist of Basswood with half (50%) ranging from 21 cm to 30 cm, and half (50%) ranging from 31 to 45 cm DBH. Approximately (35%) of the tallied trees consist of Damson Plum. The remaining trees (~22%) consist of Manitoba Maple. Of the 23 tallied trees, 12 (~52%) range from 11 cm to 20 cm DBH, 6 (~26%) range from 11 cm to 20 cm DBH, and the remaining 5 (~21%) range from 21 cm to 45 cm DBH.

4. Impact Assessment and Recommendations

The majority of trees will need to be removed to facilitate development of the subject lands. A total of 458 trees composed of 268 individually tagged trees and 190 tallied trees (Tree Groups A to F) are proposed or recommended for removal on and within 6 m of the proposed development limits. The remaining 17 individually tagged trees are recommended for preservation.

4.1 Humberking West Tree Removals

4.1.1 Individually Tagged Trees

Of the 204 individually tagged trees proposed for removal located within Humberking West property, 146 are located within the subject lands (**Table 5**), 10 are located within the adjacent private properties (0 and 14206 Humber Station Road and 0 King Street), 15 are co-owned between the subject lands and adjacent private properties, 13 are located within the MRA (Humber Station Road), and 20 are co-owned between the subject lands and MRA.

Table 5. Humberking West Tree Removals

Botanical Name	Common Name	Quantity
<i>Acer negundo</i>	Manitoba Maple	83
<i>Tilia americana</i>	Basswood	12
<i>Juglans nigra</i>	Black Walnut	7
<i>Picea pungens</i>	Colorado Blue Spruce	7
<i>Populus tremuloides</i>	Trembling Aspen	4
<i>Acer saccharinum</i>	Silver Maple	4
<i>Picea glauca</i>	White Spruce	4
<i>Acer platanoides</i>	Norway Maple	4
<i>Pinus sylvestris</i>	Scots Pine	3
<i>Robinia pseudoacacia</i>	Black Locust	3
<i>Malus pumila</i>	Common Apple	2
<i>Morus alba</i>	White Mulberry	2
<i>Prunus avium</i>	Sweet Cherry	2
<i>Fraxinus pennsylvanica</i>	Green Ash	1
<i>Populus deltoides</i>	Eastern Cottonwood	1
<i>Salix euxina</i>	Crack Willow	1

Botanical Name	Common Name	Quantity
<i>Salix babylonica</i>	Weeping Willow	1
<i>Salix alba</i>	White Willow	1
<i>Quercus rubra</i>	Northern Red Oak	1
<i>Betula papyrifera</i>	Paper Birch	1
<i>Pyrus communis</i>	Common Pear	1
<i>Catalpa speciosa</i>	Northern Catalpa	1
Total		146

Slightly over half (~56%) of the trees proposed for removal consist of Manitoba Maple. Approximately (29%) of the subject lands trees consist of Basswood, Black Walnut, Colorado Blue Spruce, Trembling Aspen, Silver Maple, White Spruce, and Norway Maple. The remaining trees (~15%) consist of several to single individuals of Scots Pine, Black Locust, Common Apple, White Mulberry, Sweet Cherry, Green Ash, Eastern Cottonwood, Crack Willow, Weeping Willow, White Willow, Northern Red Oak, Paper Birch, Common Pear, and Northern Catalpa.

The ten (10) trees (Tree Nos. NT1, NT3 to NT5, NT7, and NT8 to NT12) located on adjacent private properties (0 and 14206 Humber Station Road, and 0 King Street) are listed below in descending order of abundance:

- Three (3) Basswood that range from 11 cm to 23 cm DBH;
- Three (3) American Elm that range from 18 cm to 28 cm DBH;
- Two (2) Manitoba Maple that are 25 cm and 35 cm DBH;
- One (1) Norway Maple that is 45 cm DBH; and
- One (1) Corkscrew Willow that is 35 cm DBH.

The 15 trees (Tree Nos. 45, 1011, 1032, 1043, 1044, 1047 to 1054, NT13, and NT16) co-owned between the subject lands and adjacent private properties are listed in descending order of abundance below:

- Six (6) Basswood that range from 10 cm to 52 cm DBH;
- Four (4) multi-stemmed Common Apple that range from 28 cm to 82 cm in aggregate DBH;
- Two (2) Manitoba Maple that range 32 cm to 37 cm DBH;
- Two (2) American Elm that are 14 cm and 77 cm DBH; and
- One (1) Norway Maple that is 25cm DBH.

The 13 trees (Tree Nos. 1027, 1366 to 1372, 1377, 1382 to 1384, and 1387) located within the MRA (Humber Station Road) that are proposed for removal include 13 Manitoba Maple that range from 13 cm to 28 cm DBH.

The 20 trees (Tree Nos. 50, 51, 54, 55, 1091 to 1093, 1095, 1098, 1100, 1302, 1317, 1319 to 1321, 1323, 1373, and 1374 to 1376) co-owned between the subject lands and MRA (Humber Station Road) are listed below in descending order of abundance:

- Twelve (12) Manitoba Maple that range from 9 cm to 38 cm DBH;
- Five (5) Scots Pine that range from 15 cm to 46 cm DBH;
- Two (2) White Spruce that are 23 cm and 25 cm DBH; and
- One (1) multi-stemmed Norway Maple with an aggregate DBH of 24 cm.

Permissions are required from adjacent private property owners and Town prior to the removal of off property and boundary trees.

Pursuant to the Caledon Station Secondary Plan policy 7.16.11.1.6, trees located in proposed municipal park sites were evaluated for potential preservation. Due to the fill requirements in the park block to accommodate the proposed road and drainage (approximately 2 to 4 m of fill), the existing four (4) trees in this area cannot be preserved.

4.1.2 Tallied Trees

Four tree groups (A, B, C and D), with a total of 167 tallied trees (97 of which are >10 cm DBH), are proposed for removal as summarized in **Table 3** and the Tree Inventory Tables in **Appendix B**.

4.2 Humberking East Tree Removals

4.2.1 Individually Tagged Trees

Of the 40 individually tagged trees proposed for removal within Humberking East property, 24 are located within the subject lands (**Table 6**), one (1) is located on adjacent private property (0 Humber Station Road), seven (7) are located within the MRA (Humber Station Road), and two (2) are co-owned between the subject lands and Canadian Pacific Railway Right-of-Way.

Table 6. Humberking East Tree Removals

Botanical Name	Common Name	Quantity
<i>Carya cordiformis</i>	Bitternut Hickory	9
<i>Acer negundo</i>	Manitoba Maple	6
<i>Ulmus americana</i>	American Elm	3
<i>Malus pumila</i>	Common Apple	3
<i>Tilia americana</i>	Basswood	3
Total		24

Slightly over one third (~37%) of the individual trees located within the subject lands for Humberking East proposed for removal consist of Bitternut Hickory. One quarter (25%) of the trees proposed for removal consist of Manitoba Maple. The remaining (~38%) consist of several to single individuals of American Elm, Common Apple, and Basswood.

The one (1) tree (Tree No. 1477) located on the adjacent private property (0 Humber Station Road) proposed for removal within Humberking East is a multi-stemmed Manitoba Maple with an aggregate DBH of 37 cm.

The seven (7) trees (Tree Nos. 1391 to 1397) located within the MRA (Humber Station Road) proposed for removal are listed below in descending order of abundance:

- Four (4) multi-stemmed Damson Plum that range in size from 6 cm to 16 cm in aggregate DBH; and
- Three (3) Eastern Red Cedar that range in size from 11 cm to 12 cm DBH.

There are two (2) trees (Tree Nos. 1399 and 1400) co-owned between the subject lands and Canadian Pacific Railway Right-of-Way that are proposed for removal within Humberking East that include one (1) Basswood that is 49 cm DBH and one (1) Manitoba Maple that is 15 cm DBH.

Permissions are required from the adjacent private property owner and Canadian Pacific Railway prior to the removal of off property and boundary trees.

4.2.2 Tallied Trees

Two (2) tree groups (E and F) with a total of 23 tallied trees (all >10 cm DBH) are proposed for removal as summarized in **Table 4** and the Tree Inventory Tables in **Appendix B**.

4.3 Trees Recommended for Removal Due to Condition

There is a total of 30 trees observed to be dead, in poor condition or in a state of decline that are a potential risk to workers, buildings or vehicles, either during or post-development are recommended for removal (**Appendix B**) due to condition. Of the 30 trees recommended for removal, 24 trees are located within the Humberking West property and six (6) are located within the Humberking East property.

4.3.1 Humberking West Trees Recommended for Removal

Of the 24 trees recommended for removal due to condition located within the Humberking West lands, 14 are located on the subject lands, one (1) is located within the adjacent private property (14206 Humber Station Road), four (4) are located within the MRA (Humber Station Road), and five (5) are co-owned between the subject lands and MRA.

The 14 trees located within the subject lands associated with the Humberking West Draft Plan area are recommended for removal due to condition include five (5) trees that are in a state of decline or in poor condition, and (9) nine trees that are dead.

The five (5) trees (Tree Nos. 1029, 1070, 1077, 1085, and 1086) in a state of decline or poor condition are listed below in descending order below:

- Two (2) multi-stemmed Manitoba Maple that are 21 cm and 25 cm in aggregate DBH;
- Two (2) multi-stemmed Green Ash that are 12 cm and 13 cm in aggregate DBH; and
- One (1) multi-stemmed Weeping Willow with an aggregate DBH of 117 cm.

The nine (9) trees (Tree Nos. 1007, 1019, 1021, 1072, 1301, 1311, 1314, 1345, and 1379) that are located on the subject lands and dead are listed below in descending order:

- Two (2) multi-stemmed Manitoba Maple that are 28 cm and 29 cm in aggregate DBH;
- Two (2) Trembling Aspen that are both 24 cm DBH;
- One (1) Silver Maple that is 39 cm DBH;
- One (1) Eastern Cottonwood that is 58 cm DBH;
- One (1) multi-stemmed Crack Willow that is 38 DBH;
- One (1) Green Ash that is 45 cm DBH; and
- One (1) Scots Pine that is 24 cm DBH.

The one (1) tree (Tree No. NT2) located on the adjacent private property (14206 Humber Station Road) recommended for removal due to condition within the Humberking West lands is an Eastern Cottonwood that is 44 cm DBH and dead.

The four (4) trees (Tree Nos. 1381, 1385, 1386, and 1388) that are located within the MRA recommended for removal due to condition within Humberking West are composed of four (4) Manitoba Maple that range from 8 cm to 25 cm DBH, one (1) is dead and the remaining are in poor condition.

The five (5) trees (Tree Nos. 1090, 1094, 1096, 1097, and 1099) that are co-owned between the subject lands and MRA recommended for removal due to condition within Humberking West are all in a state of decline or in poor condition. The five (5) trees are composed of four (4) multi-stemmed Manitoba Maple that range from 20 cm to 29 cm in aggregate DBH; and one (1) multi-stemmed Green Ash with an aggregate DBH of 23 cm.

Permissions are required from adjacent private property owners prior to the removal of off property and boundary trees.

4.3.2 Humberking East Trees Recommended for Removal

Of the six (6) trees recommended for removal due to condition (i.e., in a state of decline, in poor condition, and/or dead) four (4) are located on the subject lands, one (1) is located within the MRA, and one (1) is located co-owned between the subject lands and MRA.

The four (4) trees (Tree Nos. 1398, 1413, 1419, and NT22) located on the subject lands associated with Humberking East recommended for removal due to condition are composed of three (3) American Elm that range from 34 cm to 50 cm DBH and that are dead, and one (1) multi-stemmed Common Apple with an aggregate DBH of 32 cm and in poor condition.

The one (1) tree (Tree No. 1390) located within the MRA recommended for removal due to condition within Humberking East is one (1) multi-stemmed Damson Plum with an aggregate DBH of 16 cm.

The one (1) tree (Tree No. 1389) that is co-owned between the subject lands and MRA is one (1) Manitoba Maple that is 50 cm and in a state of decline.

Permissions are required prior to the removal of off property and boundary trees.

4.4 Trees Recommended for Preservation

There are 17 trees recommended for preservation. Of the 17 trees, five (5) trees (Tree Nos. NT14, NT15, NT17, NT18, and NT21) are located within the Draft Plan of Subdivision for Humberking West and 12 trees (Tree Nos. 1401 to 1403, 1406, 1408, NT23 to NT29) are located within the Draft Plan of Subdivision for Humberking East. The trees recommended for preservation are primarily located on the adjacent private properties and Canadian Pacific Railway Right-of-Way. Tree species recommended for preservation consist of Manitoba Maple, Crack Willow, American Elm, Eastern White Cedar, White Spruce, and White Willow. Due to the fill requirements in the park block to accommodate the proposed road and drainage (approximately 2 to 4 m of fill), the existing four (4) trees in this area cannot be preserved. Further details regarding species, quantities, sizes of trees recommended for preservation can be found in **Appendix B**.

4.5 Tree Protection

There is potential for damage to occur to trees during construction if proper precautions and protection measures are not implemented. Trees can be negatively impacted through grade changes, soil compaction, root cutting, and mechanical damage to trunks and branches resulting from the operation of construction equipment.

Any trees that do not require removal to accommodate construction shall be protected through the establishment of a minimum Tree Protection Zone (TPZ). Prior to construction, tree protection fencing is required to be installed around the tree located a minimum distance as shown in the TPZ column within the tree inventory tables presented in **Appendix B**. The TPZ should be measured from the base of the tree, or to the edge of paved surface. The location of the tree protection barriers in relation to the proposed development is shown in the TIPP (**Appendix B**). As per the Town of Caledon's guidelines, tree protection barriers shall consist of 1.2 m (4 ft) high orange plastic snow fence wired to T-bars. The TPZ barrier should be constructed as per the Town of Caledon's TPZ barrier specifications and tree protection details as shown in **Appendix B**.

A minimum TPZ radius of 6 cm is recommended for every 1 cm of trunk diameter, which is consistent with surrounding local municipalities (City of Toronto, City of Richmond Hill). **Table 7** below outlines TPZs based on tree diameter categories with 6 cm of TPZ radius for every 1 cm of trunk diameter.

Table 7. Minimum TPZ Distances

Trunk Diameter at Breast Height (cm)	Minimum TPZ (m)
≤10	1.2
11-20	1.2
21-30	1.8
31-40	2.4
41-50	3.0
51-60	3.6
61-70	4.2
71-80	4.8
81-90	5.4
91-100	6.0

TPZs that are less than the standard minimum generally require additional arboricultural measures to be applied to trees (i.e. root/branch pruning, soil protection, etc.).

In addition to the establishment of TPZs, the following specifications are recommended:

- Before the beginning of work, the contractor shall meet with Beacon Environmental on site to review work procedures, access routes, storage areas and the TPZ or other tree protection measures;
- Tree protection fencing shall be installed and in good condition prior to the start of construction and is to be maintained in good condition throughout the duration of construction activities;
- Areas within the tree protection fencing of the trees designated for preservation are not to be used for any type of storage;
- Trees shall not have any rigging cables or hardware of any sort attached or wrapped around them, nor shall any contaminants be dumped within the protective areas or flushed where they may come into contact with the feeder roots of the trees;
- In the event that it is necessary to remove additional limbs or portions of trees, after construction has commenced, to accommodate construction, the consulting Arborist or project administrator is to be informed and the removal is to be executed carefully and in full accordance with arboricultural techniques, by a qualified Arborist;
- During excavation operations in which roots are affected, the Contractor is to prune all exposed roots cleanly. Pruned root ends shall point obliquely downwards. The exposed roots should not be allowed to dry out. The Contractor shall discuss watering of the roots with the Owner and Contract Administrator prior to pruning to ensure that so that optimum soil moisture is maintained during construction and backfilling operations. Backfilling must be completed as soon as practical with clean, uncontaminated native topsoil or mulch. Directional drilling is recommended for installing infrastructure servicing within TPZs; and
- Where the access route abuts the tree protection fencing, curb shall be hand-formed to minimize root loss.

Additionally, tree preservation and potential tree removals shall follow the guidelines as outlined in Section 2.6 of the *Town of Caledon's Terms of Reference: Tree Preservation* (Town of Caledon, undated). The general notes are listed below.

- *During construction and prior to final approval by the Town, the consulting Arborist along with appropriate Town staff shall intermittently inspect the entire site. Any noted hazardous trees must be identified and removed prior to Assumption or earlier if deemed hazardous at the sole cost of the Owner/Applicant. Any records of maintenance or removals are to be submitted to the Town.*
- *Compensation will be required for all tree removals at a rate as determined by the Town's Tableland Tree Removal Compensation. Tree compensation planting will be in addition to the standard required planting. In the event tree compensation cannot be accommodated for in the planting design, financial compensation shall be collected at a rate (per tree) as determined by the Town. Based on the compensation ratio, (insert number) replacement trees are required to compensate for the removal of trees on the subject property.*
- *Removals should occur outside of the breeding bird season (late March – late August, as per the Canada Nesting Periods website). If this is not possible, clearance with an ecologist shall occur prior to construction to ensure no loss of bird nest, egg or unfledged young.*
- *Any trees located on the property line (boundary trees as defined by the Ontario Forestry Act) or on the adjacent property that are proposed to be removed, pruned or injured, will require written consent from the adjacent landowner. All correspondence is to be forwarded to the Town prior to any removals.*
- *Minor grading works may be permitted at the edge of the tree protection zone as required to correct localized grading issues adjacent to the proposed development at the discretion of the Town. This work is to be undertaken under the supervision of the consulting Arborist. The consulting Arborist is to verify in writing to the Town, confirming that the work has been completed as per the approved design using best arboricultural practices.*
- *Areas within the tree protection zone shall remain undisturbed for the duration of site construction and shall not be used for the storage of excavated fill, building/construction material, structures or equipment.*
- *The limit of tree protection hoarding shall be confirmed in the field by the consulting arborist, Town staff and conservation authority (if applicable). The Owner/Applicant shall be responsible for ongoing maintenance and repairs to tree protection fencing to the satisfaction of the Town, until final approval by the Town and conservation authority (if applicable). The Owner/Applicant shall not remove and not cause or permit any tree preservation fencing to be removed without the approval of the Town and conservation authority (if applicable).*

4.6 Timing of Tree Removals

The federal *Migratory Bird Convention Act* (1994) and the provincial *Fish and Wildlife Conservation Act* (1997) protect the nests, eggs and young of most bird species from harm or destruction. Environment Canada considers the general nesting period of breeding birds in southern Ontario to be between late March and the end of August. This includes times at the beginning and end of the season when only a few species might be nesting. During the peak period of bird nesting, no vegetation clearing or disturbance to nesting bird habitat should occur (between mid-May and mid-July). In the "shoulder" seasons of April 1 to May 15, and July 16 to August 31, vegetation clearing could occur, but only after an ecologist with appropriate avian knowledge has surveyed the area to confirm an absence of nesting.

If nesting is found, then vegetation clearing (in an area around the nest) has to wait until nesting has concluded. From September 1 through to March 31, of any year, vegetation clearing can occur without nest surveys, but the law for nest protection applies at any time (i.e., if an active nest is known it should be protected). Nesting habitat includes grasses, shrubs trees and structures.

5. Tree Replacement

The Town of Caledon requires compensation for the removal of healthy tableland trees as outlined in *Terms of Reference: Tree Preservation* (Town of Caledon, undated). Compensation for removed trees is determined based on the cost to replace the trees that will be removed due to development. The Town of Caledon has developed a formula for calculating compensation values that is based on tree size. An analysis has been completed for using this formula for the Draft Plan East and West properties.

5.1 Humberking West Tree Compensation Calculations

As per the Town’s requirements, the tree compensation calculations for Humberking West tree removals are presented in **Table 8** below.

Table 8. Humberking West Compensation Calculations Based on Town Requirements

Diameter at Breast Height (cm)	Number of Living Trees to be Removed	Compensation Ratio	Number of Compensation Trees
10-20	140	1:1	140
21-35	109	2:1	218
36-50	27	3:1	81
51-65	6	4:1	24
>65	9	5:1	45
Total:	291	Total:	508*

*Does not account for shared boundary trees with 0 King Street (Argo Macville)

As per the results in **Table 8**, a total of 508 replacement trees are required for the removal of 291 trees (includes individually tagged and tallied trees) that are 10 cm DBH or greater, and alive within Humberking West.

The number of replacement trees identified in **Table 8** does not account for the removal of several trees (NT7-NT13) located at 0 King Street, which will be removed by others (Argo Macville). It also does not account for 13 shared boundary trees located on the property line with 0 King Street (Argo Macville), including 1031, 1032, 1038, 1043, 1044, 1047-1054. The removal of these shared boundary trees is required to accommodate both development proposals; therefore, it is understood that replacement of these trees is a shared responsibility. The number of replacement trees required for these boundary trees is 41; therefore, an additional 21 replacement trees are required for Humberking West, bringing the total to **529**.

5.2 Humberking East Tree Compensation Calculations

As per the Town’s requirements, the tree compensation calculations for Humberking East tree removals are presented in **Table 9** below.

Table 9. Humberking East Compensation Calculations Based on Town Requirements

Diameter at Breast Height (cm)	Number of Living Trees to be Removed	Compensation Ratio	Number of Compensation Trees
10-20	26	1:1	26
21-35	19	2:1	38
36-50	10	3:1	30
51-65	2	4:1	8
>65	0	5:1	0
Total:	57	Total:	102

As per the results in **Table 9**, a total of 102 replacement trees are required for the removal of 57 trees (includes individually tagged and tallied trees) that are 10 cm DBH or greater, and alive within Humberking East.

5.3 Tree Replacement Recommendations

As per Section 2.3 of the Town of Caledon’s *Development Standard Manual* (2019), replacement trees should be of healthy, balled and burlap caliper stock. Replacement trees should be sized accordingly, deciduous trees 60 mm caliper in size, flowering (specimen trees) 50 mm caliper in size, and coniferous trees 225 cm in height. To avoid a monoculture, a variety of trees should be used and have no more than four (4) to eight (8) of the same species grouped along a street, and no more than 20% of the same species for any streetscape. Trees shall be diverse and hardy to withstand urban conditions. All boulevard trees are required a minimum depth of 300 mm of topsoil and sod.

Recommended replacement tree species are listed in **Table 10**. The planting of invasive species such as Norway Maple, should be avoided entirely.

Table 10. List of Recommended Replacement Tree Species for Planting

Scientific Name	Common Name
<i>Acer saccharum</i>	Sugar Maple
<i>Aesculus glabra</i>	Ohio Buckeye
<i>Amelanchier laevis</i>	Smooth Serviceberry
<i>Carya cordiformis</i>	Bitternut Hickory
<i>Carya ovata</i>	Shagbark Hickory
<i>Cercis canadensis</i>	Eastern Redbud
<i>Gymnocladus dioica</i>	Kentucky Coffee-tree
<i>Quercus bicolor</i>	Swamp White Oak
<i>Quercus macrocarpa</i>	Bur Oak
<i>Liriodendron tulipifera</i>	Tulip Tree
<i>Picea glauca</i>	White Spruce
<i>Pinus strobus</i>	White Pine
<i>Tilia americana</i>	Basswood
<i>Thuja occidentalis</i>	Eastern White Cedar

Trees should be planted with adequate soil volume using good quality soil, proper installation, and subsequent maintenance. Furthermore, replacement trees should be watered regularly for at least the first two years.

If there is insufficient room to plant the required number of replacement trees on-site, then financial compensation (cash-in-lieu) may be accepted at rate (per tree) as determined by the Town.

Prepared by:
Beacon Environmental Ltd.



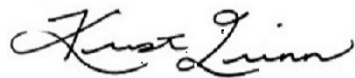
Alex Haney, B.E.S. (Hons.)
Ecologist,
ISA Certified Arborist (ON-2723A)

Reviewed by:
Beacon Environmental Ltd.



Dan Westerhof, B.Sc., M.E.S
Senior Terrestrial Ecologist, ISA Certified Arborist

Reviewed by:
Beacon Environmental Ltd.



Kristi Quinn, B.E.S, Cert. Env. Assessment.
Prinipal, Senior Enviromental Planner

6. References

- Beacon Environmental, Urbantech Consulting, Glen Schnarr & Associates Inc., DS Consultants Ltd. 2024.
Comprehensive Environmental Impact Study and Management Plan Caledon Station Community Secondary Plan. September 2024.
- Government of Canada. 1994.
Migratory Birds Convention Act, 1994 (S.C. 1994, c.22).
- Government of Ontario. 1997.
Fish and Wildlife Conservation Act, 1997 (S.O 1997, c. 41)
- Humphries Planning Group Inc. 2023.
Humberking East Draft Plan of Subdivision – Part of Lots 11 and 12, Concession 5 (Geographic Township of Albion), Town of Caledon, Regional Municipality of Peel. February 6, 2023.
- Humphries Planning Group Inc. 2023.
Humberking West Draft Plan of Subdivision – The East Half of Lot 11, Concession 4 (Geographic Township of Albion), Town of Caledon, Regional Municipality of Peel. August 17, 2023.
- Town of Caledon. 2019.
Development Standards Manual. 2019.
- Town of Caledon. Undated.
Terms of Reference: Tree Preservation.
- Urbantech Consulting. 2024.
Caledon Station Secondary Plan Functional Servicing Report. Town of Caledon, Region of Peel. Prepared for Caledon Community Partners. September 2024.
- Urbantech Consulting. 2024.
Functional Servicing and Stormwater Management Report – Humberking East and Humberking West. March 2024.

Appendix A



Limitations of Tree Assessment

Appendix A

Limitations of Tree Assessment

It is the policy of Beacon Environmental Limited to attach the following clause regarding limitations of the tree assessment. The intent is to ensure that the client is aware of what is technically and professionally realistic in assessing and/or retaining trees.

The assessment of the trees presented in this report has been made using accepted arboricultural techniques. These techniques include a visual examination of the above-ground parts of each tree for structural defects, scars, external indications of decay such as fungal fruiting bodies, evidence of insect attack, crown dieback, discoloured foliage, the condition of any visible root structures, the degree and direction of lean (if any), the general condition of the tree(s) and the surrounding site, and the proximity of property and people. Except where specifically noted in the report, none of the trees examined were dissected, cored, probed, or climbed, and detailed root crown examinations involving excavation were not undertaken.

Notwithstanding the recommendations and conclusions made in this report, it must be recognized that trees are living organisms and their health and vigour constantly change over time. They are not immune to changes in site conditions, pests, or variations in the weather conditions including severe storms with high-speed winds. Furthermore, some symptoms may only be visible seasonally; the extent of observations that can be made may be limited by the time of year in which the inspection took place.

While reasonable efforts have been made to ensure that the trees recommended for retention are healthy unless stated otherwise within the report, no warranty or guarantees are offered, or implied, that these trees, or any parts of them, will have continued health or structure as noted in the report. It is both professionally and practically impossible to predict with absolute certainty the behaviour of any single tree or group of trees or their component parts in all circumstances. Inevitably, a standing tree will always pose some risk. Most trees have the potential for failure if provided with the necessary combinations of stresses and elements. This risk can only be eliminated if the tree is removed.

Although every effort has been made to ensure that this assessment is reasonably accurate, it is recommended that trees be re-assessed periodically to identify changes in condition. Design or site plan changes may also necessitate re-assessment and/or revisions to this report. **The assessment presented in this report is valid at the time of the inspection and is intended for sole use of the client.** Any use of this report by a third party, and any decision based on this report, is the singular responsibility of the third party.

Appendix B



Tree Inventory and Preservation Plan

Tree Inventory Table

Table 1. Humberking West - Tree Inventory Table

Humberking West - Tree Inventory Table										
Tag/Tree No.	Scientific Name	Common Name	DBH in cm (aggregate)	Crown Diameter (m)	Condition ¹	Comments	Ownership	TPZ Radius ² (m)	Tree Preservation Recommendation	Compensation QTY
33	<i>Picea glauca</i>	White Spruce	30	6	Fair-Good	Minor dieback and thinning; Stem leaning towards the east.	Subject Lands	N/A	Remove Due to Development	2
35	<i>Picea glauca</i>	White Spruce	35, 26, (44)	8	Good	Good vigour; Stems fork below breast height; Included bark.	Subject Lands	N/A	Remove Due to Development	3
37	<i>Acer negundo</i>	Manitoba Maple	37	12	Fair-Good	Minor dieback and thinning; Epicormic shoots at base.	Subject Lands	N/A	Remove Due to Development	3
39	<i>Quercus rubra</i>	Northern Red Oak	48	12	Fair-Good	Minor dieback and thinning; Large mature tree.	Subject Lands	N/A	Remove Due to Development	3
40	<i>Juglans nigra</i>	Black Walnut	56	14	Good	Good form and vigour; Full healthy crown.	Subject Lands	N/A	Remove Due to Development	4
42	<i>Acer negundo</i>	Manitoba Maple	36	9	Fair-Good	Minor dieback and thinning; Epicormic shoots at base.	Subject Lands	N/A	Remove Due to Development	3
45	<i>Acer negundo</i>	Manitoba Maple	11, 35, (37)	8	Good	Good vigour; Full healthy crown; Stems fork near ground; Included bark.	Co-owned between Subject Lands and 0 Humber Station Road	N/A	Remove Due to Development	3
46	<i>Picea pungens</i>	Colorado Spruce Blue	27	5	Good	Good form and vigour.	Subject Lands	N/A	Remove Due to Development	2
47	<i>Picea pungens</i>	Colorado Spruce Blue	27	5	Good	Good form and vigour.	Subject Lands	N/A	Remove Due to Development	2
48	<i>Picea pungens</i>	Colorado Spruce Blue	27	5	Good	Good form and vigour.	Subject Lands	N/A	Remove Due to Development	2
49	<i>Picea pungens</i>	Colorado Spruce Blue	21	5	Good	Good form and vigour.	Subject Lands	N/A	Remove Due to Development	2
50	<i>Picea glauca</i>	White Spruce	25	7	Good	Good form and vigour.	Co-owned between Subject Lands and Municipal Road Allowance	N/A	Remove Due to Development	2
51	<i>Picea glauca</i>	White Spruce	23	5	Good	Good form and vigour.	Co-owned between Subject Lands and Municipal Road Allowance	N/A	Remove Due to Development	2
52	<i>Picea pungens</i>	Colorado Spruce Blue	32	8	Good	Good form and vigour.	Subject Lands	N/A	Remove Due to Development	2
54	<i>Acer platanoides</i>	Norway Maple	15, 19, (24)	8	Fair-Good	Minor dieback and thinning; Stems fork near ground; Included bark.	Co-owned between Subject Lands and Municipal Road Allowance	N/A	Remove Due to Development	2

Humberking West - Tree Inventory Table

Tag/Tree No.	Scientific Name	Common Name	DBH in cm (aggregate)	Crown Diameter (m)	Condition ¹	Comments	Ownership	TPZ Radius ² (m)	Tree Preservation Recommendation	Compensation QTY
55	<i>Acer negundo</i>	Manitoba Maple	29	8	Good	Good vigour; Stem leaning slightly towards southeast; Epicormic shoots at breast height and at base.	Co-owned between Subject Lands and Municipal Road Allowance	N/A	Remove Due to Development	2
56	<i>Picea glauca</i>	White Spruce	30, 20, (36)	8	Good	Good vigour; Full healthy crown; Stems fork below breast height; Included bark.	Subject Lands	N/A	Remove Due to Development	3
57	<i>Picea pungens</i>	Colorado Blue Spruce	18	5	Good	Good form and vigour.	Subject Lands	N/A	Remove Due to Development	1
58	<i>Prunus avium</i>	Sweet Cherry	24, 30, (38)	9	Fair-Good	Good form; Full healthy crown; Stems fork near ground; Included bark; Wounds along smaller stem that are sealing well.	Subject Lands	N/A	Remove Due to Development	3
60	<i>Acer negundo</i>	Manitoba Maple	61	16	Fair-Good	Good form; Minor dieback and thinning; Stem girdled slightly by slack line; Wood blocks nailed into stem.	Subject Lands	N/A	Remove Due to Development	4
61	<i>Prunus avium</i>	Sweet Cherry	43	9	Fair-Good	Good form and vigour; Stem being girdled by slack line.	Subject Lands	N/A	Remove Due to Development	3
62	<i>Acer negundo</i>	Manitoba Maple	27, 28, (39)	9	Fair-Good	Good form and vigour; Mechanical wounds to stem; Stems fork below breast height; Included bark.	Subject Lands	N/A	Remove Due to Development	3
63	<i>Salix alba</i>	White Willow	80	16	Good	Good form and vigour; Full healthy crown; Large mature tree; Weeping willow species.	Subject Lands	N/A	Remove Due to Development	5
72	<i>Acer negundo</i>	Manitoba Maple	27, 10, 8, 5, 5, 5, 5, (32)	10	Good	Good vigour; Full healthy crown; Stems fork near ground; Included bark.	Subject Lands	N/A	Remove Due to Development	2
1001	<i>Betula papyrifera</i>	Paper Birch	22, 22, (31)	9	Good	Good vigour; Stems fork near ground; Stems partially fused; Full healthy crown.	Subject Lands	N/A	Remove Due to Development	2
1002	<i>Robinia pseudoacacia</i>	Black Locust	45	12	Good	Good form and vigour; Full healthy crown.	Subject Lands	N/A	Remove Due to Development	3
1003	<i>Morus alba</i>	White Mulberry	39	8	Good	Good form and vigour; Weeping variety; Canopy pruned to maintain shape.	Subject Lands	N/A	Remove Due to Development	3
1004	<i>Morus alba</i>	White Mulberry	39	8	Good	Good form and vigour; Weeping variety; Canopy pruned to maintain shape.	Subject Lands	N/A	Remove Due to Development	3
1006	<i>Populus deltoides</i>	Eastern Cottonwood	75	14	Fair	Moderate dieback and thinning; Large mature tree.	Subject Lands	N/A	Remove Due to Development	5
1007	<i>Populus deltoides</i>	Eastern Cottonwood	58	N/A	Dead	Standing snag.	Subject Lands	N/A	Remove Due to Condition	N/A

Humberking West - Tree Inventory Table

Tag/Tree No.	Scientific Name	Common Name	DBH in cm (aggregate)	Crown Diameter (m)	Condition ¹	Comments	Ownership	TPZ Radius ² (m)	Tree Preservation Recommendation	Compensation QTY
1008	<i>Acer platanoides</i>	Norway Maple	22	8	Good	Good form and vigour.	Subject Lands	N/A	Remove Due to Development	2
1009	<i>Robinia pseudoacacia</i>	Black Locust	44	10	Good	Good form and vigour.	Subject Lands	N/A	Remove Due to Development	3
1010	<i>Robinia pseudoacacia</i>	Black Locust	20	9	Good	Good form and vigour.	Subject Lands	N/A	Remove Due to Development	1
1011	<i>Acer negundo</i>	Manitoba Maple	10, 30, (32)	9	Fair-Good	Good vigour; Minor dieback and thinning; Stems fork near ground; Included bark; Stems with significant lean towards the southeast; Canopy extends onto subject property.	Co-owned between Subject Lands and 0 Humber Station Road	N/A	Remove Due to Development	2
1012	<i>Acer platanoides</i>	Norway Maple	77	18	Fair-Good	Good form and vigour; Full healthy crown; Tree house built in canopy; Wooden boards nailed to stem; Retagged previous tag has fallen off.	Subject Lands	N/A	Remove Due to Development	5
1013	<i>Picea glauca</i>	White Spruce	13	5	Good	Good form and vigour.	Subject Lands	N/A	Remove Due to Development	1
1014	<i>Acer platanoides</i>	Norway Maple	21, 24, (32)	10	Good	Good vigour; Full healthy crown; Stems fork near ground; Included bark.	Subject Lands	N/A	Remove Due to Development	2
1015	<i>Acer negundo</i>	Manitoba Maple	24	8	Fair-Good	Good vigour; Minor dieback and thinning; Significant lean towards the southeast.	Subject Lands	N/A	Remove Due to Development	2
1016	<i>Acer negundo</i>	Manitoba Maple	46	10	Good	Good vigour; Full healthy crown; Stems fused together at breast height.	Subject Lands	N/A	Remove Due to Development	3
1017	<i>Acer negundo</i>	Manitoba Maple	17, 21, (27)	9	Fair-Good	Good vigour; Minor dieback and thinning; Stems fork below breast height; Included bark; Significant lean towards the southeast.	Subject Lands	N/A	Remove Due to Development	2
1018	<i>Populus tremuloides</i>	Trembling Aspen	32	8	Fair	Good form; Canker through stem; Wound wood present.	Subject Lands	N/A	Remove Due to Development	2
1019	<i>Populus tremuloides</i>	Trembling Aspen	24	N/A	Dead	Standing snag.	Subject Lands	N/A	Remove Due to Condition	N/A
1020	<i>Populus tremuloides</i>	Trembling Aspen	21	8	Good	Good form and vigour.	Subject Lands	N/A	Remove Due to Development	2
1021	<i>Populus tremuloides</i>	Trembling Aspen	24	N/A	Dead	Standing snag.	Subject Lands	N/A	Remove Due to Condition	N/A
1022	<i>Populus tremuloides</i>	Trembling Aspen	21	7	Fair-Good	Minor dieback and thinning.	Subject Lands	N/A	Remove Due to Development	2
1023	<i>Populus tremuloides</i>	Trembling Aspen	21	7	Fair-Good	Minor dieback and thinning.	Subject Lands	N/A	Remove Due to Development	2

Humberking West - Tree Inventory Table

Tag/Tree No.	Scientific Name	Common Name	DBH in cm (aggregate)	Crown Diameter (m)	Condition ¹	Comments	Ownership	TPZ Radius ² (m)	Tree Preservation Recommendation	Compensation QTY
1024	<i>Acer platanoides</i>	Norway Maple	20	8	Fair-Good	Good vigour; Stem partially fused into neighbouring tree.	Subject Lands	N/A	Remove Due to Development	1
1025	<i>Picea pungens</i>	Colorado Blue Spruce	12	4	Good	Good form and vigour.	Subject Lands	N/A	Remove Due to Development	1
1026	<i>Acer negundo</i>	Manitoba Maple	33	10	Fair-Good	Good vigour; Minor dieback and thinning; Epicormic shoots at base.	Subject Lands	N/A	Remove Due to Development	2
1027	<i>Acer negundo</i>	Manitoba Maple	13, 10, 8, (18)	7	Fair-Good	Minor dieback and thinning; Stems fork near ground; Included bark.	Municipal Road Allowance	N/A	Remove Due to Development	1
1028	<i>Salix babylonica</i>	Weeping Willow	100, 35, (106)	18	Fair-Good	Good vigour; Minor dieback and thinning; Stems fork below breast height; Included bark.	Subject Lands	N/A	Remove Due to Development	5
1029	<i>Salix babylonica</i>	Weeping Willow	100, 60, (117)	20	Poor	Moderate dieback and thinning; Larger stem has partially failed and is laying on ground; Large rotting cavities through out stem and at base; Stems fork near ground; Included bark; Weeping willow species.	Subject Lands	N/A	Remove Due to Condition	5
1030	<i>Acer negundo</i>	Manitoba Maple	37, 36, 21, (56)	12	Fair-Good	Good vigour; Full healthy crown; Stems fork near ground; Included bark; Wire fence fused into stem at base; Retagged previous tag has fallen off.	Subject Lands	N/A	Remove Due to Development	4
1031	<i>Tilia americana</i>	Basswood	17	6	Good	Good vigour; Full healthy crown; Adventitious shoots at base.	Subject Lands	N/A	Remove Due to Development	1
1032	<i>Ulmus americana</i>	American Elm	77	16	Good	Good form and vigour; Full healthy crown; Good root flare; Notable tree.	Co-owned between Subject Lands and 0 King Street	N/A	Remove Due to Development	5
1033	<i>Acer negundo</i>	Manitoba Maple	21, 10, 10, (25)	8	Fair-Good	Minor dieback and thinning; Stems fork near ground; Included bark.	Subject Lands	N/A	Remove Due to Development	2
1034	<i>Tilia americana</i>	Basswood	23	7	Good	Good vigour; Full healthy crown; Adventitious shoots at base.	Subject Lands	N/A	Remove Due to Development	2
1035	<i>Tilia americana</i>	Basswood	18	5	Good	Good form and vigour.	Subject Lands	N/A	Remove Due to Development	1
1036	<i>Tilia americana</i>	Basswood	18	6	Good	Good form and vigour.	Subject Lands	N/A	Remove Due to Development	1
1037	<i>Tilia americana</i>	Basswood	12, 3, (12)	4	Good	Good vigour; Stems fork near ground; Included bark.	Subject Lands	N/A	Remove Due to Development	1
1038	<i>Tilia americana</i>	Basswood	10	4	Good	Good form and vigour.	Subject Lands	N/A	Remove Due to Development	1
1039	<i>Tilia americana</i>	Basswood	51, 33, 57, 50, 50, 50, (120)	18	Good	Good vigour; Full healthy crown; Large spreading branches; Good root flare; Notable tree.	Subject Lands	N/A	Remove Due to Development	5

Humberking West - Tree Inventory Table

Tag/Tree No.	Scientific Name	Common Name	DBH in cm (aggregate)	Crown Diameter (m)	Condition ¹	Comments	Ownership	TPZ Radius ² (m)	Tree Preservation Recommendation	Compensation QTY
1040	<i>Tilia americana</i>	Basswood	10	3	Good	Good form and vigour.	Subject Lands	N/A	Remove Due to Development	1
1041	<i>Tilia americana</i>	Basswood	27	9	Good	Good form and vigour.	Subject Lands	N/A	Remove Due to Development	2
1042	<i>Tilia americana</i>	Basswood	23	7	Good	Good form and vigour.	Subject Lands	N/A	Remove Due to Development	2
1043	<i>Tilia americana</i>	Basswood	9, 26, 28, 11, 10, 18, 25, (52)	12	Good	Good vigour; Full healthy crown; Stems fork below breast height; Included bark.	Co-owned between Subject Lands and 0 King Street	N/A	Remove Due to Development	4
1044	<i>Tilia americana</i>	Basswood	11	3	Good	Good form and vigour.	Co-owned between Subject Lands and 0 King Street	N/A	Remove Due to Development	1
1045	<i>Tilia americana</i>	Basswood	17	6	Good	Good form and vigour.	Subject Lands	N/A	Remove Due to Development	1
1046	<i>Tilia americana</i>	Basswood	20, 22, 40, 38, 32, 10, 11, 10, (73)	14	Good	Good vigour; Full healthy crown; Large spreading branches; Stems fork below breast height; Included bark.	Subject Lands	N/A	Remove Due to Development	5
1047	<i>Tilia americana</i>	Basswood	16	6	Good	Good form and vigour.	Co-owned between Subject Lands and 0 King Street	N/A	Remove Due to Development	1
1048	<i>Tilia americana</i>	Basswood	19, 18, 10, (28)	10	Good	Good vigour; Stems fork near ground; Included bark; Full healthy crown.	Co-owned between Subject Lands and 0 King Street	N/A	Remove Due to Development	2
1049	<i>Tilia americana</i>	Basswood	10, 8, (13)	6	Good	Good vigour; Stems partially fused together below breast height.	Co-owned between Subject Lands and 0 King Street	N/A	Remove Due to Development	1
1050	<i>Tilia americana</i>	Basswood	15, 10, 8, 5, (20)	7	Good	Good vigour; Stems fork near ground; Included bark; Full healthy crown.	Co-owned between Subject Lands and 0 King Street	N/A	Remove Due to Development	1
1051	<i>Ulmus americana</i>	American Elm	14	6	Good	Good form and vigour.	Co-owned between Subject Lands and 0 King Street	N/A	Remove Due to Development	1
1052	<i>Malus pumila</i>	Common Apple	50, 35, (61)	9	Fair-Good	Minor dieback and thinning; Stems fork below breast height; Included bark.	Co-owned between Subject Lands and 0 King Street	N/A	Remove Due to Development	4
1053	<i>Malus pumila</i>	Common Apple	55, 55, 25, (82)	12	Fair	Moderate dieback and thinning; Stems fork near ground; Fruiting at time of inventory; Large mature tree.	Co-owned between Subject Lands and 0 King Street	N/A	Remove Due to Development	5
1054	<i>Malus pumila</i>	Common Apple	30, 40, (50)	9	Fair-Good	Good vigour; Minor dieback and thinning; Stems fork near ground; Included bark; Fruiting at the time of inventory.	Co-owned between Subject Lands and 0 King Street	N/A	Remove Due to Development	3

Humberking West - Tree Inventory Table

Tag/Tree No.	Scientific Name	Common Name	DBH in cm (aggregate)	Crown Diameter (m)	Condition ¹	Comments	Ownership	TPZ Radius ² (m)	Tree Preservation Recommendation	Compensation QTY
1055	<i>Acer negundo</i>	Manitoba Maple	25, 10, 10, 12, (31)	8	Fair-Good	Good vigour; Minor dieback and thinning; Stems fork near ground; Included bark.	Subject Lands	N/A	Remove Due to Development	2
1056	<i>Acer negundo</i>	Manitoba Maple	15, 12, (19)	6	Fair-Good	Good vigour; Minor dieback and thinning; Stems fork below breast height; Included bark.	Subject Lands	N/A	Remove Due to Development	1
1057	<i>Acer negundo</i>	Manitoba Maple	15, 15, 15, 10, (28)	7	Fair-Good	Good vigour; Minor dieback and thinning; Stems fork below breast height; Included bark.	Subject Lands	N/A	Remove Due to Development	2
1058	<i>Acer negundo</i>	Manitoba Maple	27, 25, (37)	8	Fair-Good	Good vigour; Minor dieback and thinning; Stems fork below breast height; Included bark.	Subject Lands	N/A	Remove Due to Development	3
1059	<i>Acer negundo</i>	Manitoba Maple	15, 15, 12, (24)	7	Fair-Good	Good vigour; Minor dieback and thinning; Stems fork below breast height; Included bark.	Subject Lands	N/A	Remove Due to Development	2
1060	<i>Acer negundo</i>	Manitoba Maple	18, 16, (24)	10	Fair-Good	Good vigour; Minor dieback and thinning; Stems fork near ground; Included bark.	Subject Lands	N/A	Remove Due to Development	2
1061	<i>Acer negundo</i>	Manitoba Maple	16, 8, 8, 4, (20)	8	Fair-Good	Good vigour; Minor dieback and thinning; Stems fork near ground; Included bark.	Subject Lands	N/A	Remove Due to Development	1
1062	<i>Acer negundo</i>	Manitoba Maple	9, 6, 4, (12)	8	Fair-Good	Good vigour; Minor dieback and thinning; Stems fork near ground; Included bark.	Subject Lands	N/A	Remove Due to Development	1
1063	<i>Acer negundo</i>	Manitoba Maple	9, 8, 13, 6, (19)	9	Fair-Good	Good vigour; Minor dieback and thinning; Stems fork near ground; Included bark.	Subject Lands	N/A	Remove Due to Development	1
1064	<i>Acer negundo</i>	Manitoba Maple	21, 14, (25)	9	Fair-Good	Good vigour; Stems fork near ground; Included bark; One stem partially fused into wire property fence	Subject Lands	N/A	Remove Due to Development	2
1065	<i>Acer negundo</i>	Manitoba Maple	14, 14, 20, 21, (35)	10	Fair-Good	Minor dieback and thinning; Stems fork near ground; Included bark.	Subject Lands	N/A	Remove Due to Development	2
1066	<i>Acer negundo</i>	Manitoba Maple	17, 10, 10, 4, (22)	10	Fair-Good	Minor dieback and thinning; Stems fork near ground; Included bark.	Subject Lands	N/A	Remove Due to Development	2
1067	<i>Acer negundo</i>	Manitoba Maple	12, 11, 15, (22)	8	Fair-Good	Minor dieback and thinning; Stems fork near ground; Included bark; One stem partially fused into wire property fence.	Subject Lands	N/A	Remove Due to Development	2
1068	<i>Acer negundo</i>	Manitoba Maple	11, 4, 4, 5, (13)	7	Fair-Good	Minor dieback and thinning; Steps fork near ground; Included bark.	Subject Lands	N/A	Remove Due to Development	1
1069	<i>Acer negundo</i>	Manitoba Maple	12, 9, 4, (16)	7	Fair-Good	Minor dieback and thinning; Stems fork near ground; Included bark.	Subject Lands	N/A	Remove Due to Development	1

Humberking West - Tree Inventory Table

Tag/Tree No.	Scientific Name	Common Name	DBH in cm (aggregate)	Crown Diameter (m)	Condition ¹	Comments	Ownership	TPZ Radius ² (m)	Tree Preservation Recommendation	Compensation QTY
1070	<i>Fraxinus pennsylvanica</i>	Green Ash	11, 3, 7, (13)	5	Poor	Main stem has died; Two live stems are epicormic shoots; Stems fork near ground; Included bark; Decline likely due to EAB infestation.	Subject Lands	N/A	Remove Due to Condition	1
1071	<i>Acer negundo</i>	Manitoba Maple	13, 9, 4, (16)	7	Fair-Good	Minor dieback and thinning; Stems fork near ground; Included bark.	Subject Lands	N/A	Remove Due to Development	1
1072	<i>Salix euxina</i>	Crack Willow	20, 20, 15, 20, (38)	N/A	Dead	Standing snag; Potential risk tree; Tree inaccessible to measure, DBH measurements estimated.	Subject Lands	N/A	Remove Due to Condition	N/A
1073	<i>Salix euxina</i>	Crack Willow	29	8	Good	Good form and vigour; Growing in drainage feature.	Subject Lands	N/A	Remove Due to Development	2
1074	<i>Fraxinus pennsylvanica</i>	Green Ash	10, 9, 8, 7, 8, (19)	8	Fair	Moderate dieback and thinning; Stems fork near ground; Included bark; Evidence of EAB infestation.	Subject Lands	N/A	Remove Due to Development	1
1075	<i>Acer negundo</i>	Manitoba Maple	6, 9, 3, (11)	6	Fair-Good	Minor dieback and thinning; Stems fork near ground; Included bark.	Subject Lands	N/A	Remove Due to Development	1
1076	<i>Acer negundo</i>	Manitoba Maple	19, 3, 3, (19)	9	Fair-Good	Minor dieback and thinning; Stems fork near ground; Included bark.	Subject Lands	N/A	Remove Due to Development	1
1077	<i>Fraxinus pennsylvanica</i>	Green Ash	8, 8, 3, (12)	6	Poor	Significant dieback and thinning; Larger two stems are dead; Smaller stem is an epicormic shoot; Decline likely due to EAB infestation.	Subject Lands	N/A	Remove Due to Condition	1
1078	<i>Acer negundo</i>	Manitoba Maple	8, 5, (9)	6	Fair-Good	Good vigour; Stems fork near ground; Included bark.	Subject Lands	N/A	Remove Due to Development	0
1079	<i>Acer negundo</i>	Manitoba Maple	22, 10, (24)	10	Good	Good vigour; Stems fork near ground; Included bark.	Subject Lands	N/A	Remove Due to Development	2
1080	<i>Acer negundo</i>	Manitoba Maple	12, 15, (19)	8	Fair-Good	Minor dieback and thinning; Stems fork near ground; Included bark.	Subject Lands	N/A	Remove Due to Development	1
1081	<i>Acer negundo</i>	Manitoba Maple	10, 8, (13)	6	Fair-Good	Minor dieback and thinning; Stems fork near ground; Included bark.	Subject Lands	N/A	Remove Due to Development	1
1082	<i>Acer negundo</i>	Manitoba Maple	10, 10, (14)	6	Fair-Good	Good vigour; Stems fork below breast height; Mechanical wound on one stem; Wound wood present.	Subject Lands	N/A	Remove Due to Development	1
1083	<i>Acer negundo</i>	Manitoba Maple	11	6	Good	Good vigour; Asymmetrical crown.	Subject Lands	N/A	Remove Due to Development	1
1084	<i>Acer negundo</i>	Manitoba Maple	15, 9, 9, 8, (21)	7	Fair-Good	Minor dieback and thinning; Stems fork near ground; Included bark.	Subject Lands	N/A	Remove Due to Development	2
1085	<i>Acer negundo</i>	Manitoba Maple	14, 15, 15, (25)	10	Poor-Fair	Significant dieback and thinning; Stems fork near ground; Included bark; Peeling bark on several stems.	Subject Lands	N/A	Remove Due to Condition	2
1086	<i>Acer negundo</i>	Manitoba Maple	14, 12, 10, (21)	8	Poor-Fair	Significant dieback and thinning; Stems fork near ground; Included	Subject Lands	N/A	Remove Due to Condition	2

Humberking West - Tree Inventory Table

Tag/Tree No.	Scientific Name	Common Name	DBH in cm (aggregate)	Crown Diameter (m)	Condition ¹	Comments	Ownership	TPZ Radius ² (m)	Tree Preservation Recommendation	Compensation QTY
						bark; Peeling bark on several of the stems.				
1087	<i>Acer negundo</i>	Manitoba Maple	11	6	Fair-Good	Minor dieback and thinning.	Subject Lands	N/A	Remove Due to Development	1
1088	<i>Acer negundo</i>	Manitoba Maple	16	8	Good	Good form and vigour.	Subject Lands	N/A	Remove Due to Development	1
1089	<i>Acer negundo</i>	Manitoba Maple	17, 10, 11, 12, (26)	10	Fair-Good	Minor dieback and thinning; Stems fork near ground; Included bark.	Subject Lands	N/A	Remove Due to Development	2
1090	<i>Acer negundo</i>	Manitoba Maple	11, 11, 13, (20)	7	Poor	Significant dieback and thinning; Stems fork near ground; Included bark; Peeling bark.	Co-owned between Subject Lands and Municipal Road Allowance	N/A	Remove Due to Condition	1
1091	<i>Acer negundo</i>	Manitoba Maple	16	7	Fair-Good	Minor dieback and thinning.	Co-owned between Subject Lands and Municipal Road Allowance	N/A	Remove Due to Development	1
1092	<i>Acer negundo</i>	Manitoba Maple	19	6	Fair	Moderate dieback and thinning.	Co-owned between Subject Lands and Municipal Road Allowance	N/A	Remove Due to Development	1
1093	<i>Acer negundo</i>	Manitoba Maple	18, 19, (26)	9	Fair	Moderate dieback and thinning; Stems fork below breast height; Included bark.	Co-owned between Subject Lands and Municipal Road Allowance	N/A	Remove Due to Development	2
1094	<i>Acer negundo</i>	Manitoba Maple	15, 9, 12, (21)	6	Poor-Fair	Significant dieback and thinning; Stems fork near ground; Included bark.	Co-owned between Subject Lands and Municipal Road Allowance	N/A	Remove Due to Condition	2
1095	<i>Acer negundo</i>	Manitoba Maple	18, 13, 9, (24)	8	Fair-Good	Minor dieback and thinning; Stems fork near ground; Included bark.	Co-owned between Subject Lands and Municipal Road Allowance	N/A	Remove Due to Development	2
1096	<i>Fraxinus pennsylvanica</i>	Green Ash	12, 11, 10, 8, 10, (23)	8	Poor	Significant dieback and thinning; Larger stems are dead; Smaller stems are epicormic shoots; Decline likely due to EAB infestation.	Co-owned between Subject Lands and Municipal Road Allowance	N/A	Remove Due to Condition	2
1097	<i>Acer negundo</i>	Manitoba Maple	19, 13, (23)	8	Poor	Significant dieback and thinning; Stems fork below breast height; Included bark.	Co-owned between Subject Lands and Municipal Road Allowance	N/A	Remove Due to Condition	2
1098	<i>Acer negundo</i>	Manitoba Maple	18, 14, 16, (28)	9	Fair-Good	Minor dieback and thinning; Stems fork near ground; Included bark.	Co-owned between Subject Lands and	N/A	Remove Due to Development	2

Humberking West - Tree Inventory Table

Tag/Tree No.	Scientific Name	Common Name	DBH in cm (aggregate)	Crown Diameter (m)	Condition ¹	Comments	Ownership	TPZ Radius ² (m)	Tree Preservation Recommendation	Compensation QTY
							Municipal Road Allowance			
1099	<i>Acer negundo</i>	Manitoba Maple	27, 11, (29)	8	Poor	Significant dieback and thinning; Stems fork near ground; Included bark.	Co-owned between Subject Lands and Municipal Road Allowance	N/A	Remove Due to Condition	2
1100	<i>Acer negundo</i>	Manitoba Maple	27, 16, (31)	10	Fair-Good	Minor dieback and thinning; Stems fork near ground; Included bark.	Co-owned between Subject Lands and Municipal Road Allowance	N/A	Remove Due to Development	2
1239	<i>Acer negundo</i>	Manitoba Maple	19	6	Fair-Good	Minor dieback and thinning.	Subject Lands	N/A	Remove Due to Development	1
1301	<i>Fraxinus pennsylvanica</i>	Green Ash	45	N/A	Dead	Standing snag; Potential risk tree.	Subject Lands	N/A	Remove Due to Condition	N/A
1302	<i>Acer negundo</i>	Manitoba Maple	14, 19, 20, 18, 14, (38)	10	Fair-Good	Minor dieback and thinning; Stems fork below breast height; Included bark.	Co-owned between Subject Lands and Municipal Road Allowance	N/A	Remove Due to Development	3
1303	<i>Catalpa speciosa</i>	Northern Catalpa	69	12	Good	Good form and vigour; Full healthy crown.	Subject Lands	N/A	Remove Due to Development	5
1304	<i>Juglans nigra</i>	Black Walnut	24	7	Good	Good form and vigour.	Subject Lands	N/A	Remove Due to Development	2
1305	<i>Juglans nigra</i>	Black Walnut	17, 5, (18)	7	Good	Good vigour; Stems fork below breast height; Included bark.	Subject Lands	N/A	Remove Due to Development	1
1306	<i>Juglans nigra</i>	Black Walnut	13, 10, (16)	7	Good	Good vigour; Stems fork near ground; Included bark.	Subject Lands	N/A	Remove Due to Development	1
1307	<i>Juglans nigra</i>	Black Walnut	19	8	Good	Good form and vigour.	Subject Lands	N/A	Remove Due to Development	1
1308	<i>Juglans nigra</i>	Black Walnut	33	11	Good	Good form and vigour; Full healthy crown.	Subject Lands	N/A	Remove Due to Development	2
1309	<i>Acer saccharinum</i>	Silver Maple	22, 18, 10, 8, (31)	8	Fair	Good vigour; Stems fork near ground; Included bark; Adventitious shoots near base; Rotting cavity near ground; Exposed surface roots.	Subject Lands	N/A	Remove Due to Development	2
1310	<i>Acer saccharinum</i>	Silver Maple	45, 39, 24, (64)	14	Fair-Good	Good vigour; Stems fork near ground; Included bark; One stem with calloused wound below breast height; Large mature tree.	Subject Lands	N/A	Remove Due to Development	4
1311	<i>Pinus sylvestris</i>	Scots Pine	24	N/A	Dead	Standing snag.	Subject Lands	N/A	Remove Due to Condition	N/A
1312	<i>Acer saccharinum</i>	Silver Maple	31	8	Fair-Good	Minor dieback and thinning.	Subject Lands	N/A	Remove Due to Development	2

Humberking West - Tree Inventory Table

Tag/Tree No.	Scientific Name	Common Name	DBH in cm (aggregate)	Crown Diameter (m)	Condition ¹	Comments	Ownership	TPZ Radius ² (m)	Tree Preservation Recommendation	Compensation QTY
1313	<i>Acer saccharinum</i>	Silver Maple	23	7	Fair-Good	Minor dieback and thinning.	Subject Lands	N/A	Remove Due to Development	2
1314	<i>Acer saccharinum</i>	Silver Maple	39	N/A	Dead	Standing snag.	Subject Lands	N/A	Remove Due to Condition	N/A
1315	<i>Pinus sylvestris</i>	Scots Pine	23	7	Fair-Good	Good form and vigour; Stem slightly gridled by wire property fence.	Subject Lands	N/A	Remove Due to Development	2
1316	<i>Malus pumila</i>	Common Apple	70	10	Fair-Good	Good form and vigour; Cavity at breast height; Wound wood; Large mature tree.	Subject Lands	N/A	Remove Due to Development	5
1317	<i>Pinus sylvestris</i>	Scots Pine	46	8	Good	Good vigour; Slight lean towards the east.	Co-owned between Subject Lands and Municipal Road Allowance	N/A	Remove Due to Development	3
1318	<i>Pinus sylvestris</i>	Scots Pine	26	7	Good	Good form and vigour.	Subject Lands	N/A	Remove Due to Development	2
1319	<i>Pinus sylvestris</i>	Scots Pine	30	7	Fair-Good	Good form and vigour.	Co-owned between Subject Lands and Municipal Road Allowance	N/A	Remove Due to Development	2
1320	<i>Pinus sylvestris</i>	Scots Pine	22	6	Good	Good form and vigour.	Co-owned between Subject Lands and Municipal Road Allowance	N/A	Remove Due to Development	2
1321	<i>Pinus sylvestris</i>	Scots Pine	15	5	Good	Good form and vigour.	Co-owned between Subject Lands and Municipal Road Allowance	N/A	Remove Due to Development	1
1322	<i>Pinus sylvestris</i>	Scots Pine	14	4	Good	Good form and vigour.	Subject Lands	N/A	Remove Due to Development	1
1323	<i>Pinus sylvestris</i>	Scots Pine	38	8	Good	Good vigour; Stem slightly gridled by wire property fence.	Co-owned between Subject Lands and Municipal Road Allowance	N/A	Remove Due to Development	3
1324	<i>Acer negundo</i>	Manitoba Maple	6, 8, 4, 6, 4, (13)	8	Fair-Good	Minor dieback and thinning; Stems fork near ground; Included bark.	Subject Lands	N/A	Remove Due to Development	1
1325	<i>Juglans nigra</i>	Black Walnut	11	6	Good	Good form and vigour.	Subject Lands	N/A	Remove Due to Development	1
1326	<i>Acer negundo</i>	Manitoba Maple	15	6	Good	Good vigour; Asymetrical crown.	Subject Lands	N/A	Remove Due to Development	1
1327	<i>Acer negundo</i>	Manitoba Maple	15, 18, (23)	7	Fair	Horizontal form; Stems leaning significantly towards the east; Minor dieback and thinning.	Subject Lands	N/A	Remove Due to Development	2

Humberking West - Tree Inventory Table

Tag/Tree No.	Scientific Name	Common Name	DBH in cm (aggregate)	Crown Diameter (m)	Condition ¹	Comments	Ownership	TPZ Radius ² (m)	Tree Preservation Recommendation	Compensation QTY
1328	<i>Acer negundo</i>	Manitoba Maple	28	10	Fair-Good	Minor dieback and thinning.	Subject Lands	N/A	Remove Due to Development	2
1329	<i>Acer negundo</i>	Manitoba Maple	19	6	Fair-Good	Minor dieback and thinning.	Subject Lands	N/A	Remove Due to Development	1
1330	<i>Acer negundo</i>	Manitoba Maple	35	10	Fair-Good	Minor dieback and thinning; Slight lean towards the east.	Subject Lands	N/A	Remove Due to Development	2
1331	<i>Acer negundo</i>	Manitoba Maple	18	6	Good	Good vigour; Slight lean towards the east.	Subject Lands	N/A	Remove Due to Development	1
1332	<i>Acer negundo</i>	Manitoba Maple	27	7	Fair-Good	Minor dieback and thinning; Stem leaning towards the south.	Subject Lands	N/A	Remove Due to Development	2
1333	<i>Acer negundo</i>	Manitoba Maple	19	6	Good	Good vigour; Asymetrical crown.	Subject Lands	N/A	Remove Due to Development	1
1334	<i>Acer negundo</i>	Manitoba Maple	25, 23, 14, (37)	12	Fair-Good	Minor dieback and thinning; Stems fork near ground; Stems with significant lean towards the south.	Subject Lands	N/A	Remove Due to Development	3
1335	<i>Acer negundo</i>	Manitoba Maple	18, 19, (26)	7	Fair	Minor dieback and thinning; Stems fork below breast height; Included bark; Exposed surface roots.	Subject Lands	N/A	Remove Due to Development	2
1336	<i>Acer negundo</i>	Manitoba Maple	28, 30, (41)	12	Fair-Good	Minor dieback and thinning; Stems fork near ground; Epicormic shoots at base and breast height.	Subject Lands	N/A	Remove Due to Development	3
1337	<i>Acer negundo</i>	Manitoba Maple	17	7	Fair-Good	Minor dieback and thinning; Asymetrical crown.	Subject Lands	N/A	Remove Due to Development	1
1338	<i>Acer negundo</i>	Manitoba Maple	17, 17, (24)	8	Fair-Good	Minor dieback and thinning; Stems fork near breast height; Included bark.	Subject Lands	N/A	Remove Due to Development	2
1339	<i>Acer negundo</i>	Manitoba Maple	21	7	Fair-Good	Minor dieback and thinning.	Subject Lands	N/A	Remove Due to Development	2
1340	<i>Acer negundo</i>	Manitoba Maple	18	7	Fair	Moderate dieback and thinning.	Subject Lands	N/A	Remove Due to Development	1
1341	<i>Acer negundo</i>	Manitoba Maple	25, 23, 17, (38)	10	Fair-Good	Minor dieback and thinning; Stems fork near ground; Included bark.	Subject Lands	N/A	Remove Due to Development	3
1342	<i>Acer negundo</i>	Manitoba Maple	32, 22, (39)	10	Fair-Good	Minor dieback and thinning; Stems fork near ground; Included bark; Epicormic shoots at base.	Subject Lands	N/A	Remove Due to Development	3
1343	<i>Acer negundo</i>	Manitoba Maple	17, 28, 10, (34)	10	Fair-Good	Minor dieback and thinning; Stems fork near ground; Included bark; Epicormic shoots at base.	Subject Lands	N/A	Remove Due to Development	2
1344	<i>Acer negundo</i>	Manitoba Maple	24, 15, 15, (32)	8	Fair-Good	Minor dieback and thinning; Stems fork near ground; Included bark.	Subject Lands	N/A	Remove Due to Development	2
1345	<i>Acer negundo</i>	Manitoba Maple	20, 20, (28)	N/A	Dead	Standing snag; One stem failed at breast height; Potential risk tree.	Subject Lands	N/A	Remove Due to Condition	N/A

Humberking West - Tree Inventory Table

Tag/Tree No.	Scientific Name	Common Name	DBH in cm (aggregate)	Crown Diameter (m)	Condition ¹	Comments	Ownership	TPZ Radius ² (m)	Tree Preservation Recommendation	Compensation QTY
1346	<i>Acer negundo</i>	Manitoba Maple	15, 28, (32)	8	Fair	Moderate dieback and thinning; Stems fork below breast height; Significant lean towards the south.	Subject Lands	N/A	Remove Due to Development	2
1347	<i>Acer negundo</i>	Manitoba Maple	24	8	Fair-Good	Minor dieback and thinning; Epicormic shoots at base and along stem at breast height.	Subject Lands	N/A	Remove Due to Development	2
1348	<i>Acer negundo</i>	Manitoba Maple	31	8	Fair-Good	Minor dieback and thinning; Epicormic shoots at base and along stem at breast height.	Subject Lands	N/A	Remove Due to Development	2
1349	<i>Acer negundo</i>	Manitoba Maple	25	7	Fair-Good	Minor dieback and thinning.	Subject Lands	N/A	Remove Due to Development	2
1350	<i>Acer negundo</i>	Manitoba Maple	20, 18, (27)	8	Fair	Moderate dieback and thinning; Stems fork near ground; Epicormic shoots at base; Stems leaning towards the south.	Subject Lands	N/A	Remove Due to Development	2
1351	<i>Acer negundo</i>	Manitoba Maple	23	6	Fair	Moderate dieback and thinning; Stem leaning towards the south; Wooden debris piled up against stem.	Subject Lands	N/A	Remove Due to Development	2
1352	<i>Acer negundo</i>	Manitoba Maple	17	6	Fair-Good	Minor dieback and thinning.	Subject Lands	N/A	Remove Due to Development	1
1353	<i>Acer negundo</i>	Manitoba Maple	17	7	Fair-Good	Minor dieback and thinning; Stem leaning towards the east.	Subject Lands	N/A	Remove Due to Development	1
1354	<i>Acer negundo</i>	Manitoba Maple	30, 20, 20, 15, 15, (46)	12	Fair-Good	Minor dieback and thinning; Stems fork near ground; Included bark; Epicormic shoots at base.	Subject Lands	N/A	Remove Due to Development	3
1355	<i>Acer negundo</i>	Manitoba Maple	27	8	Fair-Good	Minor dieback and thinning.	Subject Lands	N/A	Remove Due to Development	2
1356	<i>Acer negundo</i>	Manitoba Maple	35, 20, (40)	10	Fair-Good	Minor dieback and thinning; Stems fork near ground; Included bark; Stems leaning towards the northwest.	Subject Lands	N/A	Remove Due to Development	3
1357	<i>Pyrus communis</i>	Common Pear	20, 15, (25)	8	Fair-Good	Minor dieback and thinning; Stems fork below breast height; Included bark.	Subject Lands	N/A	Remove Due to Development	2
1358	<i>Malus pumila</i>	Common Apple	15, 20, (25)	8	Fair-Good	Minor dieback and thinning; Stems fork below breast height; Included bark; Fruiting at time of inventory; Crown raised.	Subject Lands	N/A	Remove Due to Development	2
1359	<i>Acer negundo</i>	Manitoba Maple	60	12	Fair-Good	Minor dieback and thinning; Epicormic shoots at base.	Subject Lands	N/A	Remove Due to Development	4
1360	<i>Acer negundo</i>	Manitoba Maple	35, 35, (49)	12	Fair-Good	Minor dieback and thinning; Stems fork near ground; Included bark.	Subject Lands	N/A	Remove Due to Development	3
1361	<i>Acer negundo</i>	Manitoba Maple	25, 15, (29)	8	Fair-Good	Minor dieback and thinning; Stems fork near ground; Included bark.	Subject Lands	N/A	Remove Due to Development	2

Humberking West - Tree Inventory Table

Tag/Tree No.	Scientific Name	Common Name	DBH in cm (aggregate)	Crown Diameter (m)	Condition ¹	Comments	Ownership	TPZ Radius ² (m)	Tree Preservation Recommendation	Compensation QTY
1362	<i>Acer negundo</i>	Manitoba Maple	25, 25, (35)	9	Fair-Good	Minor dieback and thinning; Stems fork below breast height; Included bark.	Subject Lands	N/A	Remove Due to Development	2
1363	<i>Acer negundo</i>	Manitoba Maple	25	6	Fair-Good	Minor dieback and thinning.	Subject Lands	N/A	Remove Due to Development	2
1364	<i>Acer negundo</i>	Manitoba Maple	27	9	Fair-Good	Minor dieback and thinning; Epicormic shoots at base.	Subject Lands	N/A	Remove Due to Development	2
1365	<i>Acer negundo</i>	Manitoba Maple	45	10	Fair-Good	Minor dieback and thinning.	Subject Lands	N/A	Remove Due to Development	3
1366	<i>Acer negundo</i>	Manitoba Maple	23	6	Fair-Good	Minor dieback and thinning.	Municipal Allowance Road	N/A	Remove Due to Development	2
1367	<i>Acer negundo</i>	Manitoba Maple	23, 6, (24)	6	Fair-Good	Minor dieback and thinning; Stems fork near ground; Included bark.	Municipal Allowance Road	N/A	Remove Due to Development	2
1368	<i>Acer negundo</i>	Manitoba Maple	10, 9, (13)	6	Fair	Moderate dieback and thinning; Stems fork near ground; Included bark.	Municipal Allowance Road	N/A	Remove Due to Development	1
1369	<i>Acer negundo</i>	Manitoba Maple	28	8	Good	Good form and vigour.	Municipal Allowance Road	N/A	Remove Due to Development	2
1370	<i>Acer negundo</i>	Manitoba Maple	23, 23, (33)	8	Fair-Good	Minor dieback and thinning; Stems fork near ground; Included bark.	Municipal Allowance Road	N/A	Remove Due to Development	2
1371	<i>Acer negundo</i>	Manitoba Maple	18	6	Fair-Good	Minor dieback and thinning.	Municipal Allowance Road	N/A	Remove Due to Development	1
1372	<i>Acer negundo</i>	Manitoba Maple	10, 8, (13)	7	Fair-Good	Minor dieback and thinning; Stems fork below breast height; Included bark.	Municipal Allowance Road	N/A	Remove Due to Development	1
1373	<i>Acer negundo</i>	Manitoba Maple	20, 15, (25)	8	Fair-Good	Minor dieback and thinning; Stems fork near ground; Included bark.	Co-owned between Subject Lands and Municipal Road Allowance	N/A	Remove Due to Development	2
1374	<i>Acer negundo</i>	Manitoba Maple	8, 15, (17)	7	Fair-Good	Minor dieback and thinning; Stems fork near ground; Included bark.	Co-owned between Subject Lands and Municipal Road Allowance	N/A	Remove Due to Development	1
1375	<i>Acer negundo</i>	Manitoba Maple	6, 7, (9)	5	Fair-Good	Minor dieback and thinning; Stems fork near ground; Included bark.	Co-owned between Subject Lands and Municipal Road Allowance	N/A	Remove Due to Development	0
1376	<i>Acer negundo</i>	Manitoba Maple	15, 15, (21)	7	Fair-Good	Minor dieback and thinning; Stems fork near ground; Included bark.	Co-owned between Subject Lands and Municipal Road Allowance	N/A	Remove Due to Development	2
1377	<i>Acer negundo</i>	Manitoba Maple	15, 20, (25)	8	Fair-Good	Minor dieback and thinning; Stems fork near ground; Included bark.	Municipal Allowance Road	N/A	Remove Due to Development	2

Humberking West - Tree Inventory Table

Tag/Tree No.	Scientific Name	Common Name	DBH in cm (aggregate)	Crown Diameter (m)	Condition ¹	Comments	Ownership	TPZ Radius ² (m)	Tree Preservation Recommendation	Compensation QTY
1378	<i>Acer negundo</i>	Manitoba Maple	15, 20, 8, (26)	8	Fair-Good	Minor dieback and thinning; Stems fork near ground; Included bark.	Subject Lands	N/A	Remove Due to Development	2
1379	<i>Acer negundo</i>	Manitoba Maple	15, 15, 20, (29)	N/A	Dead	Standing snag; Potential risk tree.	Subject Lands	N/A	Remove Due to Condition	N/A
1380	<i>Acer negundo</i>	Manitoba Maple	55, 20, (59)	12	Fair-Good	Minor dieback and thinning; Stems fork below breast height; Included bark.	Subject Lands	N/A	Remove Due to Development	4
1381	<i>Acer negundo</i>	Manitoba Maple	20, 15, (25)	N/A	Dead	Standing snag; Potential risk tree.	Municipal Allowance Road	N/A	Remove Due to Condition	N/A
1382	<i>Acer negundo</i>	Manitoba Maple	17, 10, (20)	6	Fair-Good	Minor dieback and thinning; Stems fork near ground; Included bark.	Municipal Allowance Road	N/A	Remove Due to Development	1
1383	<i>Acer negundo</i>	Manitoba Maple	19, 17, (25)	7	Fair-Good	Minor dieback and thinning; Stems fork near ground; Included bark.	Municipal Allowance Road	N/A	Remove Due to Development	2
1384	<i>Acer negundo</i>	Manitoba Maple	15, 4, (16)	6	Fair-Good	Minor dieback and thinning; Stems fork near ground; Included bark.	Municipal Allowance Road	N/A	Remove Due to Development	1
1385	<i>Acer negundo</i>	Manitoba Maple	10, 4, (11)	5	Poor	Significant dieback and thinning; Stems fork near ground; Included bark.	Municipal Allowance Road	N/A	Remove Due to Condition	1
1386	<i>Acer negundo</i>	Manitoba Maple	8	4	Poor	Significant dieback and thinning.	Municipal Allowance Road	N/A	Remove Due to Condition	0
1387	<i>Acer negundo</i>	Manitoba Maple	10, 12, 8, (18)	8	Fair	Moderate dieback and thinning; Stems fork near ground; Included bark.	Municipal Allowance Road	N/A	Remove Due to Development	1
1388	<i>Acer negundo</i>	Manitoba Maple	15	6	Poor	Significant dieback and thinning.	Municipal Allowance Road	N/A	Remove Due to Condition	1
NT1	<i>Acer platanoides</i>	Norway Maple	45	12	Good	Good form and vigour; Full healthy crown; DBH measurement estimated.	14206 Humber Station Road	N/A	Remove Due to Development	3
NT2	<i>Populus deltoides</i>	Eastern Cottonwood	44	N/A	Dead	Standing snag; Potential risk tree; DBH measurement estimated.	14206 Humber Station Road	N/A	Remove Due to Condition	N/A
NT3	<i>Salix matsudana</i>	Corkscrew Willow	35	9	Fair-Good	Minor dieback and thinning; Good vigour; DBH measurement estimated.	14206 Humber Station Road	N/A	Remove Due to Development	2
NT4	<i>Acer negundo</i>	Manitoba Maple	35	8	Fair-Good	Good vigour; Minor dieback and thinning; Stem leaning towards the southeast; Canopy overhangs onto subject property.	0 Humber Station Road	N/A	Remove Due to Development	2
NT5	<i>Acer negundo</i>	Manitoba Maple	15, 15, 10, 10, (25)	10	Fair-Good	Good vigour; Minor dieback and thinning; Stems fork near ground; Included bark.	0 Humber Station Road	N/A	Remove Due to Development	2
NT6	<i>Acer negundo</i>	Manitoba Maple	15, 15, 15, 10, (28)	9	Fair-Good	Good vigour; Minor dieback and thinning; Stems fork near ground; Included bark; Tree inaccessible to tag and measure.	Subject Lands	N/A	Remove Due to Development	2

Humberking West - Tree Inventory Table

Tag/Tree No.	Scientific Name	Common Name	DBH in cm (aggregate)	Crown Diameter (m)	Condition ¹	Comments	Ownership	TPZ Radius ² (m)	Tree Preservation Recommendation	Compensation QTY
NT7	<i>Ulmus americana</i>	American Elm	28	9	Good	Good form and vigour.	0 King Street	N/A	Remove Due to Development	2
NT8	<i>Ulmus americana</i>	American Elm	18	7	Good	Good form and vigour.	0 King Street	N/A	Remove Due to Development	1
NT9	<i>Tilia americana</i>	Basswood	17, 16, (23)	8	Good	Good vigour; Full healthy crown; Stems fork near ground; Included bark.	0 King Street	N/A	Remove Due to Development	2
NT10	<i>Tilia americana</i>	Basswood	17	7	Good	Good vigour; Uneven crown.	0 King Street	N/A	Remove Due to Development	1
NT11	<i>Tilia americana</i>	Basswood	11	4	Good	Good form and vigour.	0 King street	N/A	Remove Due to Development	1
NT12	<i>Ulmus americana</i>	American Elm	22	7	Good	Good form and vigour.	0 King Street	N/A	Remove Due to Development	2
NT13	<i>Malus pumila</i>	Common Apple	20, 20, (28)	9	Fair-Good	Good vigour; Minor dieback and thinning; Stems fork near ground; Included bark; Fruiting at time of inventory; Inaccessible to tag and measure.	Co-owned between Subject Lands and 0 King Street	N/A	Remove Due to Development	2
NT14	<i>Salix alba</i>	White Willow	55, 55, (78)	12	Good	Good vigour; Stems fork near ground; Included bark; Full healthy crown; Located off property, DBH measurements estimated; Branches slightly overhang onto subject property.	0 King Street	4.8	Preserve	N/A
NT15	<i>Picea glauca</i>	White Spruce	55	9	Good	Good form and vigour; Located off property, DBH measurement estimated.	Co-owned between Subject Lands and 14042 Humber Station Road	3.6	Preserve	N/A
NT16	<i>Acer platanoides</i>	Norway Maple	25	8	Good	Good form and vigour; Located off property, DBH measurement estimated.	Co-owned between Subject Lands and 14042 Humber Station Road	1.8	Remove Due to Development	2
NT17	<i>Thuja occidentalis</i>	Eastern White Cedar	25	6	Good	Good form and vigour; Located off property, DBH measurement estimated.	Co-owned between Subject Lands and 14042 Humber Station Road	1.8	Preserve	N/A
NT18	<i>Thuja occidentalis</i>	Eastern White Cedar	15, 15, (21)	6	Good	Good vigour; Stems fork near ground; Included bark; Located off property, DBH measurement estimated.	Co-owned between Subject Lands and 14042 Humber Station Road	1.8	Preserve	N/A
NT19	<i>Acer negundo</i>	Manitoba Maple	25, 15, (29)	8	Fair-Good	Minor dieback and thinning; Stems fork near ground; Inaccessible to tag; DBH measurement estimated.	Subject Lands	N/A	Remove Due to Development	2

Humberking West - Tree Inventory Table										
Tag/Tree No.	Scientific Name	Common Name	DBH in cm (aggregate)	Crown Diameter (m)	Condition ¹	Comments	Ownership	TPZ Radius ² (m)	Tree Preservation Recommendation	Compensation QTY
NT20	<i>Acer negundo</i>	Manitoba Maple	15	6	Fair-Good	Minor dieback and thinning; Inaccessible to tag; DBH measurement estimated.	Subject Lands	N/A	Remove Due to Development	1
NT21	<i>Acer negundo</i>	Manitoba Maple	20	8	Good	Good vigour; Slight lean towards the south; Located off property, DBH measurement estimated.	Co-owned between Subject Lands and 14042 Humber Station Road	1.2	Preserve	N/A
Total Compensation										437

- The tree health condition rating was based on factors that could include one or a combination of:
 - Poor Condition – Severe dieback, significant lean, decayed, missing leader, significant disease presence
 - Fair Condition – Moderate dieback and/or lean, limb defects, multiple stems, moderate foliage damage from stress
 - Good Condition – Healthy vigorous growth, no or minor visible defects or damage
- The TPZ is the minimum distance required for tree preservation determined in accordance with ISA guidelines.

Table 2. Humberking East - Tree Inventory Table

Humberking East - Tree Inventory Table										
Tag/Tree No.	Scientific Name	Common Name	DBH (cm)	Crown Diameter (m)	Condition ¹	Comments	Ownership	TPZ Radius ² (m)	Tree Preservation Recommendation	Compensation QTY
1389	<i>Acer negundo</i>	Manitoba Maple	50	8	Poor-Fair	Large rotting cavity at base; Wound wood; Structurally unsafe; Epicormic shoots at base and along stem at breast height.	Co-owned between Subject Lands and Municipal Road Allowance	N/A	Remove Due to Condition	3
1390	<i>Prunus domestica</i>	Damson Plum	15, 4, 4, (16)	5	Poor	Significant dieback and thinning; Peeling bark; Stems fork below breast height; Included bark.	Municipal Road Allowance	N/A	Remove Due to Condition	1
1391	<i>Prunus domestica</i>	Damson Plum	8, 4, (9)	5	Fair-Good	Stems fork near ground; Included bark; Minor dieback and thinning.	Municipal Road Allowance	N/A	Remove Due to Development	0
1392	<i>Prunus domestica</i>	Damson Plum	13, 8, 4, (16)	5	Fair-Good	Minor dieback and thinning; Stems fork near ground; Included bark; Sap ooze.	Municipal Road Allowance	N/A	Remove Due to Development	1
1393	<i>Prunus domestica</i>	Damson Plum	3, 3, 3, 3, 2, (6)	6	Fair-Good	Minor dieback and thinning; Stems fork near ground; Included bark.	Municipal Road Allowance	N/A	Remove Due to Development	0
1394	<i>Prunus domestica</i>	Damson Plum	5, 3, (6)	4	Good	Good vigour; Stems fork near ground; Included bark.	Municipal Road Allowance	N/A	Remove Due to Development	0
1395	<i>Juniperus virginiana</i>	Eastern Red Cedar	12	5	Good	Good form and vigour.	Municipal Road Allowance	N/A	Remove Due to Development	1

Humberking East - Tree Inventory Table										
Tag/Tree No.	Scientific Name	Common Name	DBH (cm)	Crown Diameter (m)	Condition ¹	Comments	Ownership	TPZ Radius ² (m)	Tree Preservation Recommendation	Compensation QTY
1396	<i>Juniperus virginiana</i>	Eastern Red Cedar	12	6	Good	Good form and vigour; Wide spreading branches.	Municipal Road Allowance	N/A	Remove Due to Development	1
1397	<i>Juniperus virginiana</i>	Eastern Red Cedar	8, 8, (11)	6	Good	Good vigour; Shrub form; Stems fork near ground; Included bark.	Municipal Road Allowance	N/A	Remove Due to Development	1
1398	<i>Ulmus americana</i>	American Elm	34	N/A	Dead	Standing snag; Potential risk tree.	Subject Lands	N/A	Remove Due to Condition	N/A
1399	<i>Tilia americana</i>	Basswood	49	12	Good	Good form and vigour; Full healthy crown.	Co-owned between Subject Lands and Canadian Pacific Railway Right-of-Way	N/A	Remove Due to Development	3
1400	<i>Acer negundo</i>	Manitoba Maple	15	8	Fair-Good	Minor dieback and thinning.	Co-owned between Subject Lands and Canadian Pacific Railway Right-of-Way	N/A	Remove Due to Development	1
1401	<i>Acer negundo</i>	Manitoba Maple	8, 8, (11)	8	Fair-Good	Minor dieback and thinning; Stems fork near ground; Included bark.	Co-owned between Subject Lands and Canadian Pacific Railway Right-of-Way	1.2	Preserve	N/A
1402	<i>Acer negundo</i>	Manitoba Maple	15, 5, (16)	8	Fair-Good	Minor dieback and thinning; Stems fork near ground; Included bark.	Co-owned between Subject Lands and Canadian Pacific Railway Right-of-Way	1.2	Preserve	N/A
1403	<i>Acer negundo</i>	Manitoba Maple	15, 15, (21)	8	Fair-Good	Minor dieback and thinning; Stems fork near ground; Included bark.	Co-owned between Subject Lands and Canadian Pacific Railway Right-of-Way	1.8	Preserve	N/A
1404	<i>Ulmus americana</i>	American Elm	14	7	Good	Good form and vigour.	Subject Lands	N/A	Remove Due to Development	1
1405	<i>Acer negundo</i>	Manitoba Maple	13	6	Fair-Good	Minor dieback and thinning.	Subject Lands	N/A	Remove Due to Development	1

Humberking East - Tree Inventory Table										
Tag/Tree No.	Scientific Name	Common Name	DBH (cm)	Crown Diameter (m)	Condition ¹	Comments	Ownership	TPZ Radius ² (m)	Tree Preservation Recommendation	Compensation QTY
1406	<i>Ulmus americana</i>	American Elm	11	6	Good	Good form and vigour.	Co-owned between Subject Lands and Canadian Pacific Railway Right-of-Way	1.2	Preserve	N/A
1407	<i>Acer negundo</i>	Manitoba Maple	15, 15, (21)	8	Fair-Good	Minor dieback and thinning; Stems fork near ground; Included bark.	Subject Lands	N/A	Remove Due to Development	2
1408	<i>Acer negundo</i>	Manitoba Maple	45	8	Fair-Good	Minor dieback and thinning.	Co-owned between Subject Lands and Canadian Pacific Railway Right-of-Way	3	Preserve	N/A
1409	<i>Acer negundo</i>	Manitoba Maple	10	6	Fair-Good	Minor dieback and thinning.	Subject Lands	N/A	Remove Due to Development	1
1410	<i>Acer negundo</i>	Manitoba Maple	15, 15, 5, (22)	8	Fair-Good	Minor dieback and thinning; Stems fork near ground; Included bark; Epicormic shoots at base.	Subject Lands	N/A	Remove Due to Development	2
1411	<i>Acer negundo</i>	Manitoba Maple	14	6	Good	Good form and vigour.	Subject Lands	N/A	Remove Due to Development	1
1412	<i>Acer negundo</i>	Manitoba Maple	40	10	Fair-Good	Minor dieback and thinning; Stems fork above breast height; Included bark.	Subject Lands	N/A	Remove Due to Development	3
1413	<i>Ulmus americana</i>	American Elm	40	N/A	Dead	Standing snag; Potential risk tree.	Subject Lands	N/A	Remove Due to Condition	N/A
1414	<i>Tilia americana</i>	Basswood	39	10	Good	Good form and vigour; Stem growing adjacent to wire property fence.	Subject Lands	N/A	Remove Due to Development	3
1415	<i>Tilia americana</i>	Basswood	34	9	Good	Good form and vigour; Stem growing adjacent to wire property fence.	Subject Lands	N/A	Remove Due to Development	2
1416	<i>Malus pumila</i>	Common Apple	30, 25, (39)	8	Fair	Moderate dieback and thinning; Stems fork near ground; Included bark; Fruiting at time of surveys; Overgrown with Common Buckthorn.	Subject Lands	N/A	Remove Due to Development	3
1417	<i>Malus pumila</i>	Common Apple	30, 20, (36)	8	Fair	Moderate dieback and thinning; Stems fork near ground; Included bark; Fruiting at time of surveys; Overgrown with Common Buckthorn.	Subject Lands	N/A	Remove Due to Development	3
1418	<i>Malus pumila</i>	Common Apple	30, 35, 30, (55)	8	Fair	Moderate dieback and thinning; Stems fork near ground; Included bark; Fruiting at time of inventory; Overgrown with Common Buckthorn.	Subject Lands	N/A	Remove Due to Development	4
1419	<i>Malus pumila</i>	Common Apple	20, 25, (32)	7	Poor	Significant dieback and thinning; Rotting cavities in one stem; Stems fork below breast height; Included bark.	Subject Lands	N/A	Remove Due to Condition	2
1420	<i>Ulmus americana</i>	American Elm	46	14	Good	Good form and vigour; Wide spreading branches; Large mature tree.	Subject Lands	N/A	Remove Due to Development	3

Humberking East - Tree Inventory Table

Tag/Tree No.	Scientific Name	Common Name	DBH (cm)	Crown Diameter (m)	Condition ¹	Comments	Ownership	TPZ Radius ² (m)	Tree Preservation Recommendation	Compensation QTY
1421	<i>Ulmus americana</i>	American Elm	18	8	Good	Good form and vigour.	Subject Lands	N/A	Remove Due to Development	1
1422	<i>Carya cordiformis</i>	Bitternut Hickory	48	12	Good	Good form and vigour; Full healthy crown; Large mature tree.	Subject Lands	N/A	Remove Due to Development	3
1423	<i>Carya cordiformis</i>	Bitternut Hickory	35, 21, (41)	10	Good	Good vigour; Stems fork near ground; Included bark; Full healthy crown.	Subject Lands	N/A	Remove Due to Development	3
1424	<i>Carya cordiformis</i>	Bitternut Hickory	25	8	Good	Good form and vigour; Full healthy crown.	Subject Lands	N/A	Remove Due to Development	2
1425	<i>Carya cordiformis</i>	Bitternut Hickory	22	8	Good	Good form and vigour.	Subject Lands	N/A	Remove Due to Development	2
1426	<i>Carya cordiformis</i>	Bitternut Hickory	34	12	Good	Good form and vigour; Full healthy crown.	Subject Lands	N/A	Remove Due to Development	2
1427	<i>Carya cordiformis</i>	Bitternut Hickory	35	12	Good	Good form and vigour; Full healthy crown; Good root flare.	Subject Lands	N/A	Remove Due to Development	2
1428	<i>Carya cordiformis</i>	Bitternut Hickory	10	6	Good	Good form and vigour.	Subject Lands	N/A	Remove Due to Development	1
1429	<i>Carya cordiformis</i>	Bitternut Hickory	13	7	Good	Good form and vigour.	Subject Lands	N/A	Remove Due to Development	1
1430	<i>Carya cordiformis</i>	Bitternut Hickory	10	5	Good	Good form and vigour.	Subject Lands	N/A	Remove Due to Development	1
1477	<i>Acer negundo</i>	Manitoba Maple	25, 25, 10, (37)	8	Fair-Good	Minor dieback and thinning; Stems fork near ground; Included bark; Located off property, DBH measurement estimated; Tag from previous inventory.	0 Humber Station Road	N/A	Remove Due to Development	3
NT22	<i>Ulmus americana</i>	American Elm	50	N/A	Dead	Standing snag; Potential risk tree; Inaccessible to tag; DBH measurement estimated.	Subject Lands	N/A	Remove Due to Condition	N/A
NT23	<i>Ulmus americana</i>	American Elm	20	N/A	Dead	Standing snag; Inaccessible to tag; DBH measurement estimated.	Canadian Pacific Railway Right-of-Way	N/A	Preserve	N/A
NT24	<i>Ulmus americana</i>	American Elm	15, 15, (21)	N/A	Dead	Standing snag; Inaccessible to tag, DBH measurement estimated.	Canadian Pacific Railway Right-of-Way	N/A	Preserve	N/A
NT25	<i>Salix euxina</i>	Crack Willow	25, 25, (35)	8	Fair-Good	Minor dieback and thinning; Stems fork near ground; Included bark; Located off property, DBH measurement estimated.	Canadian Pacific Railway Right-of-Way	2.4	Preserve	N/A
NT26	<i>Acer negundo</i>	Manitoba Maple	35	9	Good	Good vigour; Located off property, DBH measurement estimated; Branches overhang onto subject property.	Canadian Pacific Railway Right-of-Way	2.4	Preserve	N/A
NT27	<i>Acer negundo</i>	Manitoba Maple	30	7	Fair-Good	Minor dieback and thinning; Located off property, DBH measurement estimated.	Canadian Pacific Railway Right-of-Way	2.4	Preserve	N/A

Humberking East - Tree Inventory Table

Tag/Tree No.	Scientific Name	Common Name	DBH (cm)	Crown Diameter (m)	Condition ¹	Comments	Ownership	TPZ Radius ² (m)	Tree Preservation Recommendation	Compensation QTY
NT28	<i>Acer negundo</i>	Manitoba Maple	25, 25, (35)	8	Fair-Good	Minor dieback and thinning; Stems fork near ground; Included bark; Located off property, DBH measurement estimated.	Canadian Pacific Railway Right-of-Way	2.4	Preserve	N/A
NT29	<i>Acer negundo</i>	Manitoba Maple	20, 15, (25)	8	Fair-Good	Minor dieback and thinning; Stems fork near ground; Included bark; Located off property, DBH measurement estimated.	Canadian Pacific Railway Right-of-Way	1.8	Preserve	N/A
NT30	<i>Tilia americana</i>	Basswood	35, 35, 25, (55)	10	Good	Good vigour; Full healthy crown; Stems fork near ground; Included bark; Inaccessible to tag, DBH measurement estimated.	Subject Lands	N/A	Remove Due to Development	4
Total Compensation										68

1. The tree health condition rating was based on factors that could include one or a combination of:
 Poor Condition – Severe dieback, significant lean, decayed, missing leader, significant disease presence
 Fair Condition – Moderate dieback and/or lean, limb defects, multiple stems, moderate foliage damage from stress
 Good Condition – Healthy vigorous growth, no or minor visible defects or damage
2. The TPZ is the minimum distance required for tree preservation determined in accordance with ISA guidelines.

Table 3. Humberking West Tree Groups

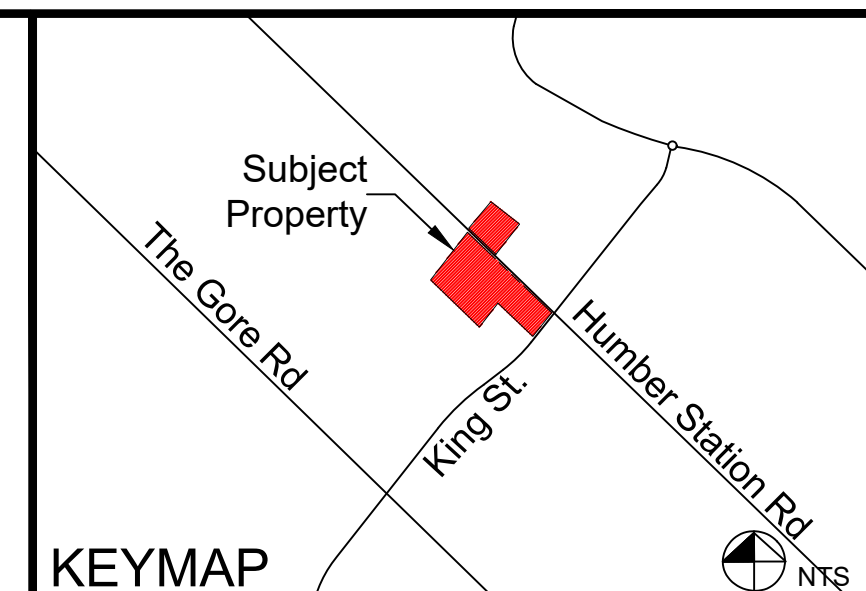
Humberking West Trees Groups				
Tree Group A		Size Class (DBH in cm)		
Scientific Name	Common Name	5-10	11-20	21-30
<i>Thuja occidentalis</i>	Eastern White Cedar	0	35	10
Compensation Subtotal		0	35	20
Tree Group B		Size Class (DBH in cm)		
Scientific Name	Common Name	5-10	11-20	21-30
<i>Thuja occidentalis</i>	Eastern White Cedar	0	20	5
Compensation Subtotal		0	20	10
Tree Group C		Size Class (DBH in cm)		
Scientific Name	Common Name	5-10	11-20	21-30
<i>Populus tremuloides</i>	Trembling Aspen	70	20	0
Compensation Subtotal		0	20	0
Tree Group D		Size Class (DBH in cm)		
Scientific Name	Common Name	5-10	11-20	21-30
<i>Acer negundo</i>	Manitoba Maple	0	7	0
Compensation Subtotal		0	7	0

Table 4. Humberking West Tree Groups

Humberking East Tree Groups				
Tree Group E		Size Class (DBH in cm)		
Scientific Name	Common Name	5-10	11-20	21-30
<i>Prunus domestica</i>	Damson Plum	0	8	0
<i>Acer negundo</i>	Manitoba Maple	0	4	0
Compensation Subtotal		0	12	0
Tree Group F		Size Class (DBH in cm)		
Scientific Name	Common Name	5-10	11-20	21-45
<i>Tilla americana</i>	Basswood	0	0	10
<i>Acer negundo</i>	Manitoba Maple	0	0	1
Compensation Subtotal		0	0	22

Appendix C





LEGEND

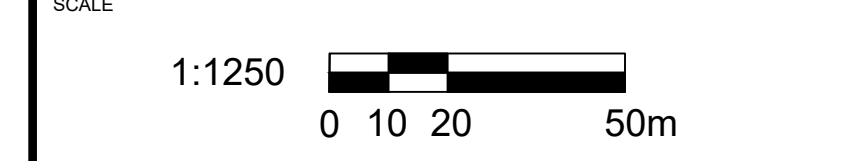
- Property Boundary
- Tree Crown
- Minimum Tree Protection Zone

Tree Location

- Tree to be Preserved
- Tree to be Removed Due to Development
- Tree to be Removed Due to Condition
- Tree Group to be Preserved
- Tree Group to be Removed Due to Development

Notes: Scale shown is for a 91.44 cm x 60.96 cm page.
For illustrative purposes. Do not scale.

NO	REVISIONS	DATE	BY:
6			
5			
4			
3	ADDRESS AGENCY COMMENTS	2024/09/20	JS
2	BASE PLAN UPDATED	2024/05/27	AH
1	ISSUED FOR SUBMISSION	2023/11/04	AH



NORTH ARROW

CERTIFIED ARBORIST

ALEX HANEY
#0N-2723A

BEACON ENVIRONMENTAL

MARKHAM OFFICE
80 MAIN ST NORTH
MARKHAM, ON L3P 1X5

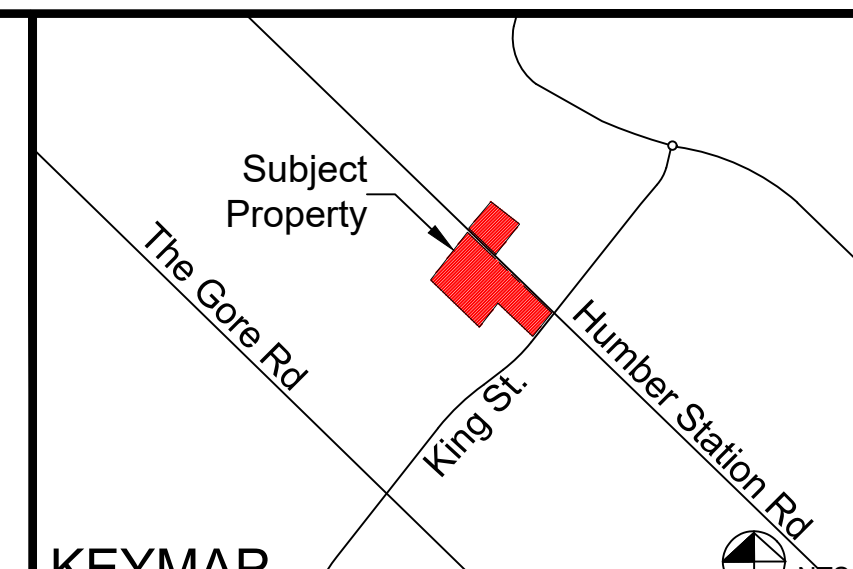
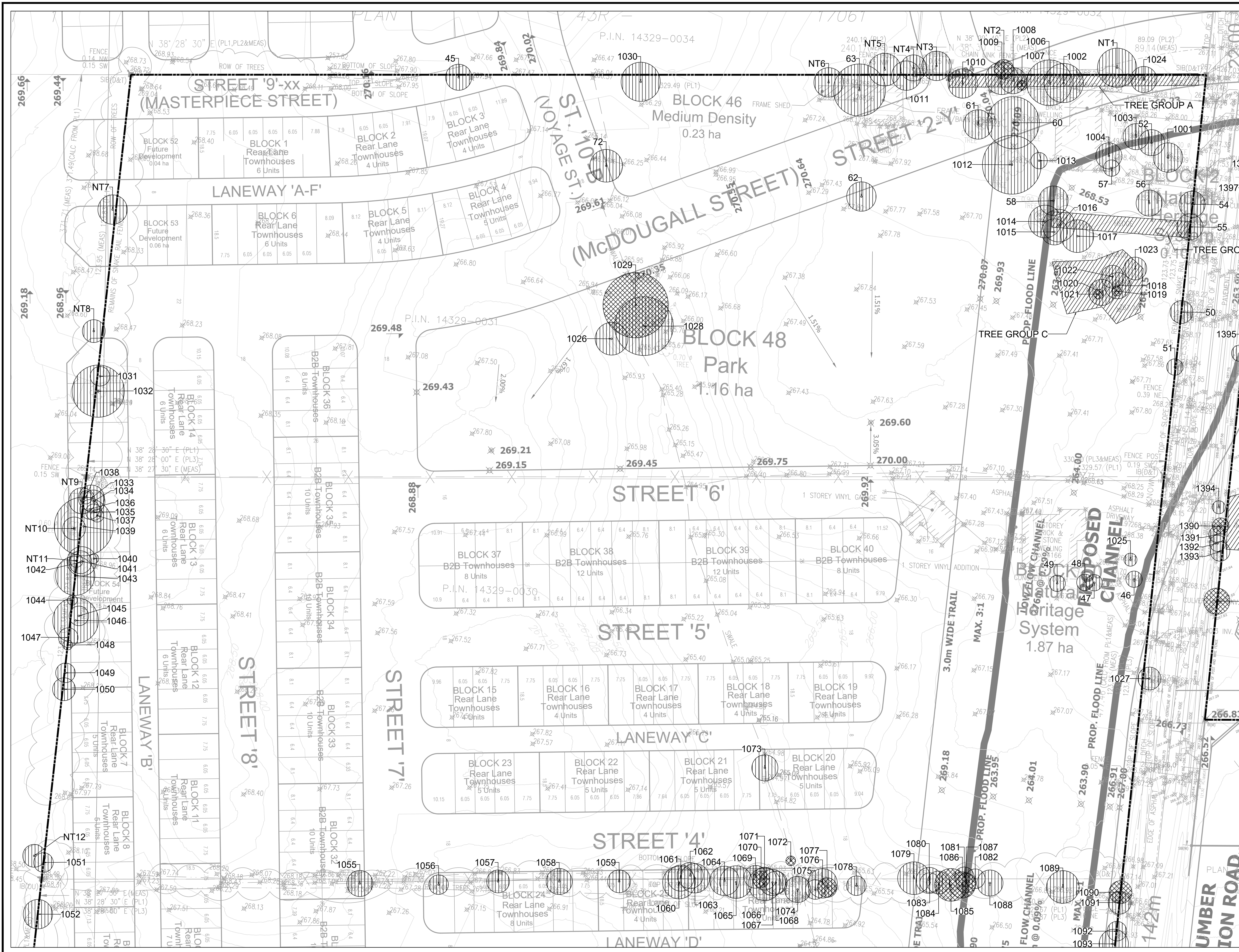
T) 905.201.7622
F) 905.201.8639

CLIENT **HUMBERKING DEVELOPMENTS LIMITED**

PROJECT **MACVILLE HUMBERKING EAST AND WEST DRAFT PLANS OF SUBDIVISION**

SHEET TITLE **TREE INVENTORY AND PRESERVATION PLAN**

DESIGN BY: ..	PROJECT NO: 223212
DRAWN BY: CS	FIGURE NO: TP-1
CHECKED BY: AH/TS	
DATE: 23 September 2024	



LEGEND

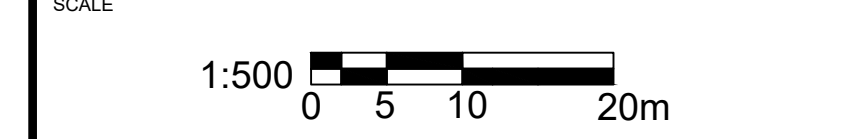
- Property Boundary
- Tree Preservation Fence
- 1678 Tree tag
- Tree Crown
- Minimum Tree Protection Zone

Tree Location

- Tree to be Preserved
- Tree to be Removed Due to Development
- Tree to be Removed Due to Condition
- Tree Group to be Preserved
- Tree Group to be Removed Due to Development

Notes: Scale shown is for a 91.44 cm x 60.96 cm page. For illustrative purposes. Do not scale.

NO	REVISIONS	DATE	BY:
6			
5			
4			
3	ADDED AGENCY COMMENTS	2024/09/20	JS
2	BASE PLAN UPDATED	2024/05/27	AH
1	ISSUED FOR SUBMISSION	2023/11/04	AH



NORTH ARROW

ALEX HANEY #0N273A

BEACON ENVIRONMENTAL

MARKHAM OFFICE
80 MARK ST NORTH
MARKHAM, ON L3P 1X5

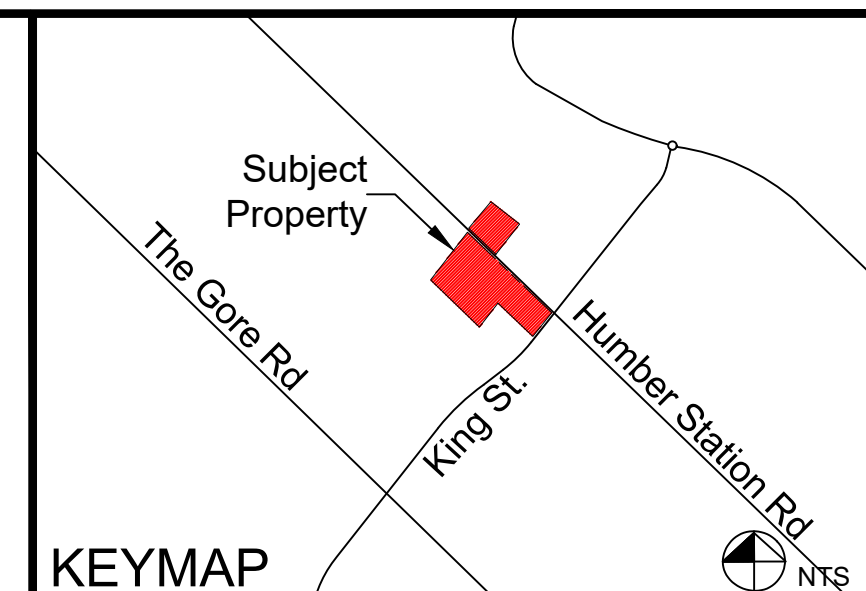
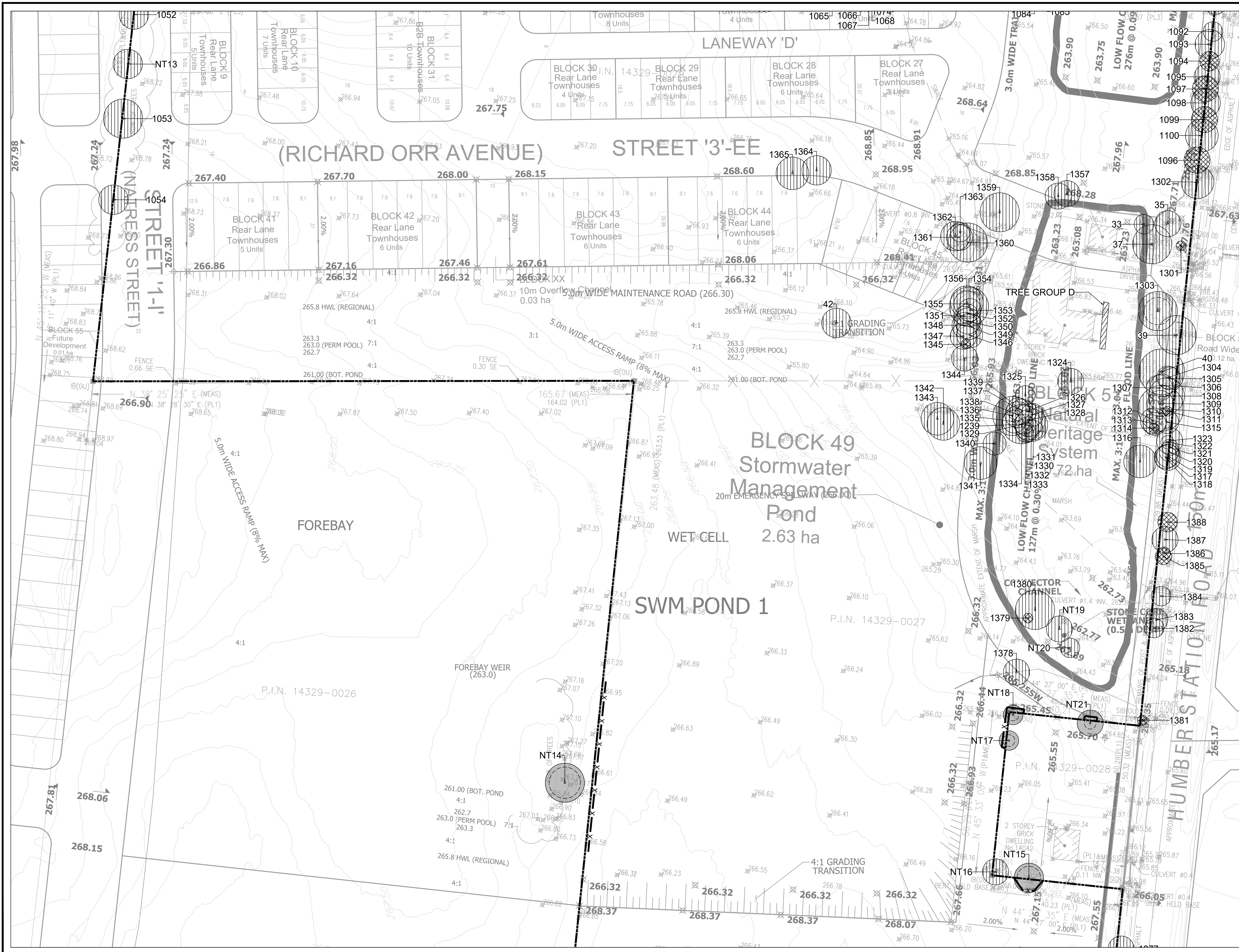
T) 905.201.7622
F) 905.201.8639

CLIENT: HUMBERKING DEVELOPMENTS LIMITED

PROJECT: MACVILLE HUMBERKING WEST DRAFT PLAN OF SUBDIVISION

SHEET TITLE: TREE INVENTORY AND PRESERVATION PLAN

DESIGN BY: --	PROJECT NO: 223212
DRAWN BY: CS	FIGURE NO: TP-2
CHECKED BY: AH/TS	
DATE: 23 September 2024	



LEGEND

- Property Boundary
- Tree Preservation Fence
- 1678 Tree tag
- Tree Crown
- Minimum Tree Protection Zone

Tree Location

- Tree to be Preserved
- Tree to be Removed Due to Development
- Tree to be Removed Due to Condition
- Tree Group to be Preserved
- Tree Group to be Removed Due to Development

Notes: Scale shown is for a 91.44 cm x 60.96 cm page. For illustrative purposes. Do not scale.

NO	REVISIONS	DATE	BY:
6			
5			
4			
3	ADDRESS AGENCY COMMENTS	2024/09/20	JS
2	BASE PLAN UPDATED	2024/05/27	AH
1	ISSUED FOR SUBMISSION	2023/11/04	AH

SCALE

1:500

0 5 10 20m

NORTH ARROW

MARKHAM OFFICE
80 MAIN ST NORTH
MARKHAM, ON L3P 1K5

T) 905.201.7622
F) 905.201.8639

CLIENT: HUMBERKING DEVELOPMENTS LIMITED

PROJECT: MACVILLE HUMBERKING WEST DRAFT PLAN OF SUBDIVISION

SHEET TITLE: TREE INVENTORY AND PRESERVATION PLAN

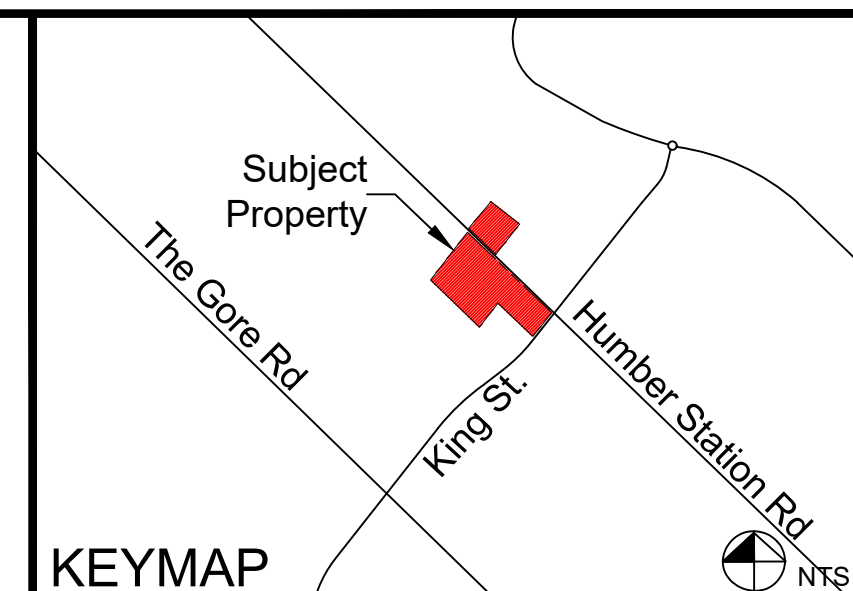
DESIGN BY: ... PROJECT NO: 223212

DRAWN BY: CS FIGURE NO: TP-3

CHECKED BY: AH/TS

DATE: 23 September 2024

W:\Projects\2023\20231104_Macville_Humberking\20231104_Macville_Humberking.dwg (P1) 2023/11/04 10:52:11 AM P:\Users\AH\Documents\20231104_Macville_Humberking.dwg (P1) 2023/11/04 10:52:11 AM



LEGEND

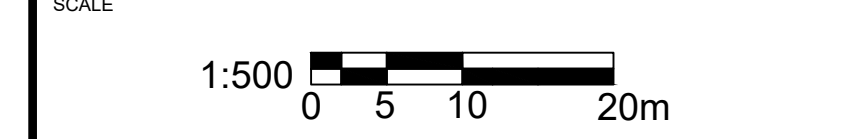
- Property Boundary
- Tree Preservation Fence
- 1678 Tree tag
- Tree Crown
- Minimum Tree Protection Zone

Tree Location

- Tree to be Preserved
- Tree to be Removed Due to Development
- Tree to be Removed Due to Condition
- Tree Group to be Preserved
- Tree Group to be Removed Due to Development

Notes: Scale shown is for a 91.44 cm x 60.96 cm page. For illustrative purposes. Do not scale.

NO	REVISIONS	DATE	BY:
6			
5			
4			
3	ADDED AGENCY COMMENTS	2024/09/20	JS
2	BASE PLAN UPDATED	2024/05/27	AH
1	ISSUED FOR SUBMISSION	2023/11/04	AH



NORTH ARROW

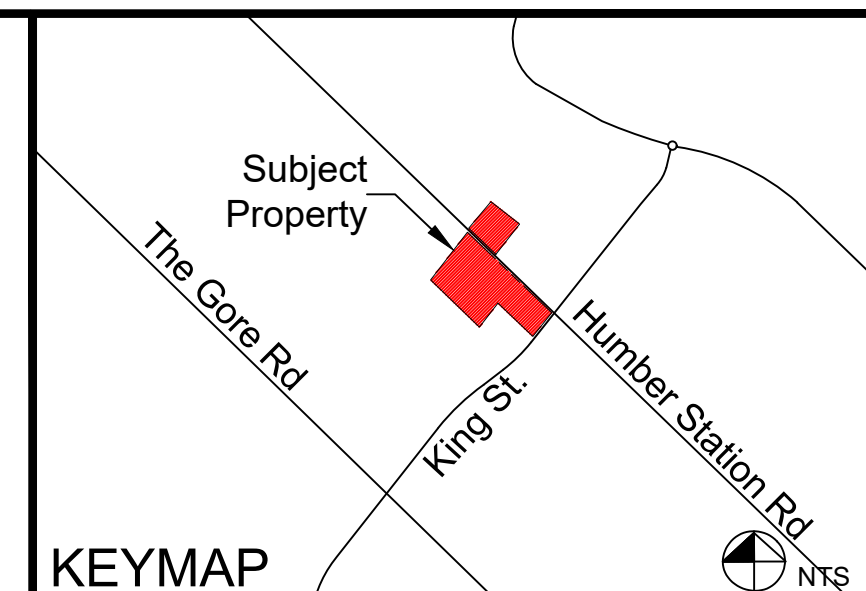
CLIENT: HUMBERKING DEVELOPMENTS LIMITED

PROJECT: MACVILLE HUMBERKING WEST DRAFT PLAN OF SUBDIVISION

SHEET TITLE: TREE INVENTORY AND PRESERVATION PLAN

DESIGN BY: ..	PROJECT NO: 223212
DRAWN BY: CS	FIGURE NO: TP-4
CHECKED BY: AH/TS	
DATE: 23 September 2024	

W:\Projects\2023\223212 - Macville Humberking West Draft Plan of Subdivision\223212.dwg (23/09/2024) 11:58:12 AM



LEGEND

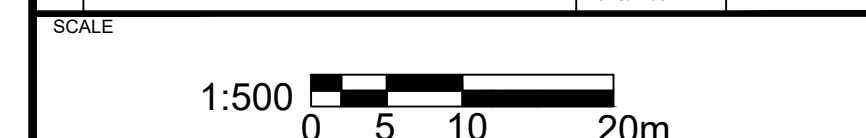
- Property Boundary
- Tree Preservation Fence
- 1678 Tree tag
- Tree Crown
- Minimum Tree Protection Zone

Tree Location

- Tree to be Preserved
- Tree to be Removed Due to Development
- Tree to be Removed Due to Condition
- Tree Group to be Preserved
- Tree Group to be Removed Due to Development

Notes: Scale shown is for a 91.44 cm x 60.96 cm page.
For illustrative purposes. Do not scale.

№	REVISIONS	DATE	BY:
6			
5			
4			
3	ADDRESSED AGENCY COMMENTS	2024/09/20	JS
2	BASE PLAN UPDATED	2024/05/27	AH
1	ISSUED FOR SUBMISSION	2023/11/04	AH



NORTH ARROW

CERTIFIED ARBORIST
ISA
ALEX HANEY
#0N-2723A

WAHBA SURVEYING
285 Vaughan Valley Blvd.
Woodbridge ON L4H3B5 Tel. 905.851.1300
Tel. 905.851.1300 www.wahbasurveying.com
www.wahbasurveying.com

l) - none

PART OF LOTS 11 AND
CONCESSION 5,
(GEOGRAPHIC TOWNSHIP OF ALB
TOWN OF CALEDON
REGIONAL MUNICIPALITY

MARKHAM OFFICE
80 MAIN ST NORTH
MARKHAM, ON L3P 1X5

T) 905.201.7622
F) 905.201.8639

CLIENT
HUMBERKING DEVELOPMENTS LIMITED

PROJECT
MACVILLE HUMBERKING EAST DRAFT PLAN OF SUBDIVISION

SHEET TITLE
TREE INVENTORY AND PRESERVATION PLAN

DESIGN BY: ... PROJECT №: 223212

DRAWN BY: CS FIGURE №:

CHECKED BY: AH/TS

DATE: 23 September 2024

TP-5

TREE INVENTORY TABLE (WEST SUBDIVISION)

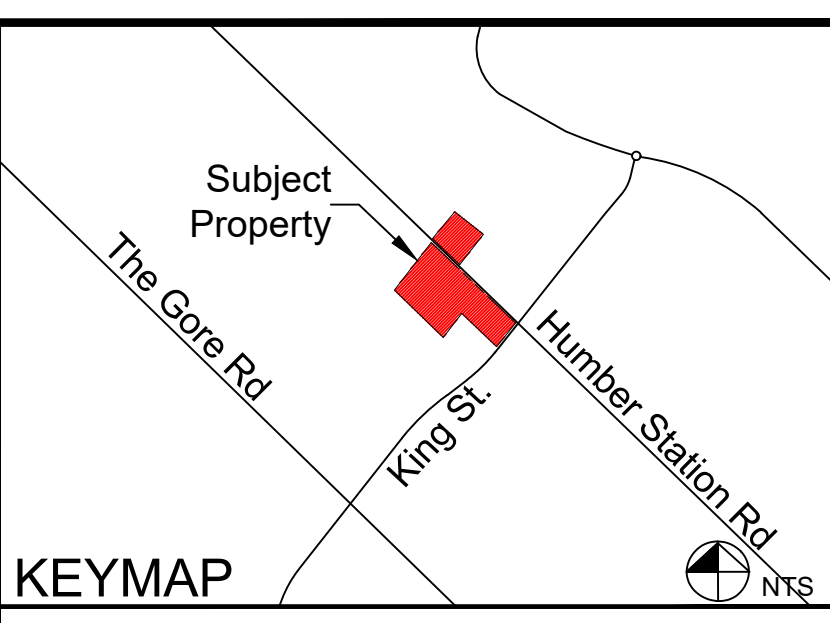
Tag/Tree No.	Scientific Name	Common Name	DBH in cm (aggregate)	Crown Diameter (m)	Condition	Comments	Ownership	TPZ (m)	Tree Preservation Recommendation	Compensation QTY
33	<i>Picea glauca</i>	White Spruce	35, 26 (44)	6	Fair-Good	Minor dieback and thinning; Stem leaning towards the east.	Subject Lands	N/A	Remove Due to Development	2
34	<i>Picea glauca</i>	White Spruce	35, 26 (44)	6	Fair-Good	Minor dieback and thinning; Stem leaning towards the east.	Subject Lands	N/A	Remove Due to Development	2
37	<i>Acer negundo</i>	Manitoba Maple	37	12	Fair-Good	Minor dieback and thinning; Epicormic shoots at base.	Subject Lands	N/A	Remove Due to Development	3
39	<i>Thuja occidentalis</i>	Northern Red Oak	48	12	Fair-Good	Minor dieback and thinning; Large mature tree.	Subject Lands	N/A	Remove Due to Development	3
42	<i>Acer negundo</i>	Manitoba Maple	38	9	Fair-Good	Minor dieback and thinning; Epicormic shoots at base.	Subject Lands	N/A	Remove Due to Development	3
45	<i>Acer negundo</i>	Manitoba Maple	11, 35, 37	8	Good	Good vigour; Full healthy crown; Stems fork near ground; Included bark.	Co-owned between Subject Lands and Municipal Road Allowance	N/A	Remove Due to Development	3
46	<i>Picea pungens</i>	Colorado Blue Spruce	27	3	Good	Good form and vigour.	Subject Lands	N/A	Remove Due to Development	2
47	<i>Picea pungens</i>	Colorado Blue Spruce	27	3	Good	Good form and vigour.	Subject Lands	N/A	Remove Due to Development	2
48	<i>Picea pungens</i>	Colorado Blue Spruce	27	3	Good	Good form and vigour.	Subject Lands	N/A	Remove Due to Development	2
49	<i>Picea pungens</i>	Colorado Blue Spruce	27	3	Good	Good form and vigour.	Subject Lands	N/A	Remove Due to Development	2
50	<i>Picea pungens</i>	Colorado Blue Spruce	27	3	Good	Good form and vigour.	Subject Lands	N/A	Remove Due to Development	2
51	<i>Picea glauca</i>	White Spruce	23	5	Good	Good form and vigour.	Subject Lands	N/A	Remove Due to Development	2
52	<i>Picea glauca</i>	White Spruce	32	8	Good	Good form and vigour.	Subject Lands	N/A	Remove Due to Development	2
54	<i>Acer platanoides</i>	Norway Maple	15, 19, (24)	8	Fair-Good	Minor dieback and thinning; Stems fork near ground; Included bark.	Co-owned between Subject Lands and Municipal Road Allowance	N/A	Remove Due to Development	2
55	<i>Acer negundo</i>	Manitoba Maple	29	8	Good	Good vigour; Stem leaning slightly towards southeast; Epicormic shoots at breast height and at base.	Subject Lands	N/A	Remove Due to Development	2
56	<i>Picea glauca</i>	White Spruce	30, 20, (36)	8	Good	Good vigour; Full healthy crown; Stems fork below breast height; Included bark.	Subject Lands	N/A	Remove Due to Development	3
57	<i>Picea pungens</i>	Colorado Blue Spruce	18	5	Good	Good form and vigour.	Subject Lands	N/A	Remove Due to Development	1
58	<i>Prunus avium</i>	Sweet Cherry	24, 30, (38)	9	Fair-Good	Wounds along smaller stem that are sealing well; Good form; Minor dieback and thinning; Stem girdled slightly by slack line; Wood blocks nailed into stem.	Subject Lands	N/A	Remove Due to Development	3
60	<i>Acer negundo</i>	Manitoba Maple	61	16	Fair-Good	Good form and vigour; Stem being girdled by slack line.	Subject Lands	N/A	Remove Due to Development	4
61	<i>Prunus avium</i>	Sweet Cherry	43	9	Fair-Good	Good form and vigour; Stem being girdled by slack line.	Subject Lands	N/A	Remove Due to Development	3
62	<i>Acer negundo</i>	Manitoba Maple	27, 28, (39)	9	Fair-Good	Good form and vigour; Mechanical wounds to stem; Stems fork below breast height; Included bark.	Subject Lands	N/A	Remove Due to Development	3
63	<i>Salix alba</i>	White Willow	80	16	Good	Good form and vigour; Full healthy crown; Large mature tree; Weeping willow species.	Subject Lands	N/A	Remove Due to Development	5
72	<i>Acer negundo</i>	Manitoba Maple	27, 10, 8, 5, 5, 5, 52, (31)	10	Good	Good vigour; Full healthy crown; Stems fork near ground; Included bark.	Subject Lands	N/A	Remove Due to Development	2
1001	<i>Betula papyrifera</i>	Paper Birch	22, 22, (31)	9	Good	Good vigour; Stems fork near ground; Stems partially fused; Full healthy crown.	Subject Lands	N/A	Remove Due to Development	2
1002	<i>Robinia pseudoacacia</i>	Black Locust	45	12	Good	Good form and vigour; Full healthy crown.	Subject Lands	N/A	Remove Due to Development	3
1003	<i>Morus alba</i>	White Mulberry	39	8	Good	Good form and vigour; Weeping variety; Canopy pruned to maintain shape.	Subject Lands	N/A	Remove Due to Development	3
1004	<i>Morus alba</i>	White Mulberry	39	8	Good	Good form and vigour; Weeping variety; Canopy pruned to maintain shape.	Subject Lands	N/A	Remove Due to Development	3
1006	<i>Populus deltoides</i>	Eastern Cottonwood	75	14	Fair	Moderate dieback and thinning; Large mature tree.	Subject Lands	N/A	Remove Due to Development	5
1007	<i>Populus deltoides</i>	Eastern Cottonwood	58	N/A	Dead	Stemming snag.	Subject Lands	N/A	Remove Due to Condition	N/A
1008	<i>Acer platanoides</i>	Norway Maple	18	5	Good	Good form and vigour.	Subject Lands	N/A	Remove Due to Development	2
1009	<i>Robinia pseudoacacia</i>	Black Locust	44	10	Good	Good form and vigour.	Subject Lands	N/A	Remove Due to Development	3
1010	<i>Robinia pseudoacacia</i>	Black Locust	20	9	Good	Good form and vigour.	Subject Lands	N/A	Remove Due to Development	1
1011	<i>Acer negundo</i>	Manitoba Maple	10, 30, (32)	9	Fair-Good	Good vigour; Minor dieback and thinning; Stems fork near ground; Included bark; Stems with significant lean towards the southeast; Canopy extends into subject property.	Co-owned between Subject Lands and 0 Humber Station Road	N/A	Remove Due to Development	2
1012	<i>Acer platanoides</i>	Norway Maple	77	18	Fair-Good	Good form and vigour; Full healthy crown; Tree house built in canopy; Wooden boards nailed to stem; Retagged previous tag has fallen off.	Subject Lands	N/A	Remove Due to Development	5
1013	<i>Picea glauca</i>	White Spruce	13	5	Good	Good form and vigour.	Subject Lands	N/A	Remove Due to Development	1
1014	<i>Acer platanoides</i>	Norway Maple	21, 24, (32)	10	Good	Good vigour; Full healthy crown; Stems fork near ground; Included bark.	Subject Lands	N/A	Remove Due to Development	2
1015	<i>Acer negundo</i>	Manitoba Maple	24	8	Fair-Good	Good form and vigour; Stems fused together at breast height.	Subject Lands	N/A	Remove Due to Development	2
1016	<i>Acer negundo</i>	Manitoba Maple	46	10	Good	Good form and vigour; Stems fused together at breast height.	Subject Lands	N/A	Remove Due to Development	3
1017	<i>Acer negundo</i>	Manitoba Maple	17, 21, (27)	8	Fair-Good	Good vigour; Minor dieback and thinning; Stems fork below breast height; Included bark; Significant lean towards the southeast.	Subject Lands	N/A	Remove Due to Development	2
1018	<i>Populus tremuloides</i>	Trembling Aspen	32	8	Fair	Good form; Canopy through stem; Wound wood present.	Subject Lands	N/A	Remove Due to Development	2
1019	<i>Populus tremuloides</i>	Trembling Aspen	24	N/A	Dead	Stemming snag.	Subject Lands	N/A	Remove Due to Condition	N/A
1020	<i>Populus tremuloides</i>	Trembling Aspen	21	8	Good	Good form and vigour.	Subject Lands	N/A	Remove Due to Development	2
1021	<i>Populus tremuloides</i>	Trembling Aspen	21	8	Good	Good form and vigour.	Subject Lands	N/A	Remove Due to Development	2
1022	<i>Populus tremuloides</i>	Trembling Aspen	21	8	Fair-Good	Minor dieback and thinning.	Subject Lands	N/A	Remove Due to Development	2
1023	<i>Populus tremuloides</i>	Trembling Aspen	21	8	Fair-Good	Minor dieback and thinning.	Subject Lands	N/A	Remove Due to Development	2
1024	<i>Acer platanoides</i>	Norway Maple	20	8	Fair-Good	Good vigour; Stem partially fused into epicormic tree.	Subject Lands	N/A	Remove Due to Development	1
1025	<i>Picea glauca</i>	White Spruce	20	10	Good	Good form and vigour.	Subject Lands	N/A	Remove Due to Development	2
1026	<i>Acer negundo</i>	Manitoba Maple	38	10	Fair-Good	Good vigour; Minor dieback and thinning; Epicormic shoots at base.	Subject Lands	N/A	Remove Due to Development	2
1027	<i>Acer negundo</i>	Manitoba Maple	13, 10, 8, (18)	7	Fair-Good	Minor dieback and thinning; Stems fork near ground; Included bark.	Municipal Road Allowance	N/A	Remove Due to Development	1
1028	<i>Salix babingtonia</i>	Weeping Willow	100, 35, (106)	18	Fair-Good	Good vigour; Minor dieback and thinning; Stems fork below breast height; Included bark.	Subject Lands	N/A	Remove Due to Development	5
1029	<i>Salix babingtonia</i>	Weeping Willow	100, 60, (117)	20	Poor	Minor dieback and thinning; Larger stem has partially failed and is laying on ground; Large rotting cavities through stem and at base; Stems fork near ground; Included bark; Weeping willow species.	Subject Lands	N/A	Remove Due to Condition	5
1030	<i>Acer negundo</i>	Manitoba Maple	37, 36, 21, (56)	12	Fair-Good	Good vigour; Full healthy crown; Stems fork near ground; Included bark; Wire fence fused into stem at base; Retagged previous tag has fallen off.	Co-owned between Subject Lands and 0 Humber Station Road	N/A	Remove Due to Development	4
1031	<i>Tilia americana</i>	Basewood	17	6	Good	Good vigour; Full healthy crown; Adventitious shoots at base.	Co-owned between Subject Lands and 0 King Street	N/A	Remove Due to Development	1
1032	<i>Ilmus americana</i>	American Elm	77	16	Good	Good form and vigour; Full healthy crown; Good root flare; Notable tree.	Co-owned between Subject Lands and 0 King Street	N/A	Remove Due to Development	5
1033	<i>Acer negundo</i>	Manitoba Maple	21, 10, (25)	8	Fair-Good	Minor dieback and thinning; Stems fork near ground; Included bark.	Subject Lands	N/A	Remove Due to Development	2
1034	<i>Tilia americana</i>	Basewood	23	7	Good	Good vigour; Full healthy crown; Adventitious shoots at base.	Subject Lands	N/A	Remove Due to Development	2
1035	<i>Tilia americana</i>	Basewood	18	6	Good	Good form and vigour.	Subject Lands	N/A	Remove Due to Development	1
1036	<i>Tilia americana</i>	Basewood	18	6	Good	Good form and vigour.	Subject Lands	N/A	Remove Due to Development	1
1037	<i>Tilia americana</i>	Basewood	12, 2, (12)	4	Good	Good vigour; Stems fork near ground; Included bark.	Subject Lands	N/A	Remove Due to Development	1
1038	<i>Tilia americana</i>	Basewood	10	4	Good	Good form and vigour.	Co-owned between Subject Lands and 0 King Street	N/A	Remove Due to Development	1
1039	<i>Tilia americana</i>	Basewood	51, 35, 57, 50, 50, 50, (120)	10	Good	Good vigour; Full healthy crown; Large spreading branches; Good root flare; Notable tree.	Subject Lands	N/A	Remove Due to Development	5
1040	<i>Tilia americana</i>	Basewood	10	3	Good	Good form and vigour.	Subject Lands	N/A	Remove Due to Development	1
1041	<i>Tilia americana</i>	Basewood	22	7	Good	Good form and vigour.	Subject Lands	N/A	Remove Due to Development	2
1042	<i>Tilia americana</i>	Basewood	23	7	Good	Good form and vigour.	Subject Lands	N/A	Remove Due to Development	2
1043	<i>Tilia americana</i>	Basewood	9, 25, 18, 11, 10, 18, 25, (32)	12	Good	Good vigour; Full healthy crown; Stems fork below breast height; Included bark.	Co-owned between Subject Lands and 0 King Street	N/A	Remove Due to Development	4
1044	<i>Tilia americana</i>	Basewood	11	3	Good	Good form and vigour.	Co-owned between Subject Lands and 0 King Street	N/A	Remove Due to Development	1
1045	<i>Tilia americana</i>	Basewood	17	6	Good	Good form and vigour.	Subject Lands	N/A	Remove Due to Development	1
1046	<i>Tilia americana</i>	Basewood	20, 22, 40, 38, 32, 10, 11, 10, (73)	14	Good	Good vigour; Full healthy crown; Large spreading branches; Stems fork below breast height; Included bark.	Subject Lands	N/A	Remove Due to Development	5
1047	<i>Tilia americana</i>	Basewood	16	6	Good	Good form and vigour.	Co-owned between Subject Lands and 0 King Street	N/A	Remove Due to Development	1
1048	<i>Tilia americana</i>	Basewood	19, 18, 10, (28)	10	Good	Good vigour; Stems fork near ground; Included bark; Full healthy crown.	Co-owned between Subject Lands and 0 King Street	N/A	Remove Due to Development	2
1049	<i>Tilia americana</i>	Basewood	10, 8, (13)	6	Good	Good vigour; Stems partially fused together below breast height.	Co-owned between Subject Lands and 0 King Street	N/A	Remove Due to Development	1
1050	<i>Tilia americana</i>	Basewood	15, 10, 6, 5, (20)	7	Good	Good vigour; Stems fork near ground; Included bark; Full healthy crown.	Co-owned between Subject Lands and 0 King Street	N/A	Remove Due to Development	1
1051	<i>Ilmus americana</i>	American Elm	14	6	Good	Good form and vigour.	Co-owned between Subject Lands and 0 King Street	N/A	Remove Due to Development	1
1052	<i>Malus pumila</i>	Common Apple	50, 35, (61)	9	Fair-Good	Minor dieback and thinning; Stems fork below breast height; Included bark.	Co-owned between Subject Lands and 0 King Street	N/A	Remove Due to Development	4
1053	<i>Malus pumila</i>	Common Apple	55, 25, (82)	12	Fair	Moderate dieback and thinning; Stems fork near ground; Fruiting at time of inventory; Large mature tree.	Co-owned between Subject Lands and 0 King Street	N/A	Remove Due to Development	5
1054	<i>Malus pumila</i>	Common Apple	30, 40, (50)	9	Fair-Good	Good vigour; Minor dieback and thinning; Stems fork near ground; Included bark; Fruiting at the time of inventory.	Co-owned between Subject Lands and 0 King Street	N/A	Remove Due to Development	3
1055	<i>Acer negundo</i>	Manitoba Maple	25, 10, 10, 12, (31)	8	Fair-Good	Good vigour; Minor dieback and thinning; Stems fork near ground; Included bark.	Subject Lands	N/A	Remove Due to Development	2
1056	<i>Acer negundo</i>	Manitoba Maple	15, 12, (19)	8	Fair-Good	Good vigour; Minor dieback and thinning; Stems fork below breast height; Included bark.	Subject Lands	N/A	Remove Due to Development	1
1057	<i>Acer negundo</i>	Manitoba Maple	15, 15, 15, 10, (28)	7	Fair-Good	Good vigour; Minor dieback and thinning; Stems fork below breast height; Included bark.	Subject Lands	N/A	Remove Due to Development	2
1058	<i>Acer negundo</i>	Manitoba Maple	27, 25, (37)	8	Fair-Good	Good vigour; Minor dieback and thinning; Stems fork below breast height; Included bark.	Subject Lands	N/A	Remove Due to Development	3
1059	<i>Acer negundo</i>	Manitoba Maple	15, 15, 12, (24)	7	Fair-Good	Good vigour; Minor dieback and thinning; Stems fork below breast height; Included bark.	Subject Lands	N/A	Remove Due to Development	2
1060	<i>Acer negundo</i>	Manitoba Maple	18, 16, (24)	10	Fair-Good	Good vigour; Minor dieback and thinning; Stems fork near ground; Included bark.	Subject Lands	N/A	Remove Due to Development	2
1061	<i>Acer negundo</i>	Manitoba Maple	16, 8, 8, 4, (20)	8	Fair-Good	Good vigour; Minor dieback and thinning; Stems fork near ground; Included bark.	Subject Lands	N/A	Remove Due to Development	1
1062	<i>Acer negundo</i>	Manitoba Maple	9, 6, 4, (12)	8	Fair-Good	Good vigour; Minor dieback and thinning; Stems fork near ground; Included bark.	Subject Lands	N/A	Remove Due to Development	1
1063	<i>Acer negundo</i>	Manitoba Maple	9, 8, 13, 6, (19)	9	Fair-Good	Good vigour; Minor dieback and thinning; Stems fork near ground; Included bark.	Subject Lands	N/A	Remove Due to Development	1
1064	<i>Acer negundo</i>	Manitoba Maple	21, 14, (25)	9	Fair-Good	Good vigour; Stems fork near ground; Included bark; One stem partially fused into wire property fence.	Subject Lands	N/A	Remove Due to Development	2
1065	<i>Acer negundo</i>	Manitoba Maple	14, 14, 20, 21, (38)	10	Fair-Good	Good form and vigour.	Subject Lands	N/A	Remove Due to Development	2
1066	<i>Acer negundo</i>	Manitoba Maple	17, 10, 4, (22)	10	Fair-Good	Minor dieback and thinning; Stems fork near ground; Included bark.	Subject Lands	N/A	Remove Due to Development	2
1067	<i>Acer negundo</i>	Manitoba Maple	12, 11, 5, (22)	8	Fair-Good	Minor dieback and thinning; Stems fork near ground; Included bark; One stem partially fused into wire property fence.	Subject Lands	N/A	Remove Due to Development	2
1068	<i>Acer negundo</i>	Manitoba Maple	11, 4, 5, (13)	7	Fair-Good	Minor dieback and thinning; Stems fork near ground; Included bark.	Subject Lands	N/A	Remove Due to Development	1
1069	<i>Acer negundo</i>	Manitoba Maple	12, 3, 4, (16)	7	Fair-Good	Minor dieback and thinning; Stems fork near ground; Included bark.	Subject Lands	N/A	Remove Due to Development	1
1070	<i>Fraxinus pennsylvanica</i>	Green Ash	11, 3, 7, (13)	5	Poor	Main stem has died; Two live stems are epicormic shoots; Stems fork near ground; Included bark; Decayed like due to EAB infestation.	Subject Lands	N/A	Remove Due to Condition	1
1071	<i>Acer negundo</i>	Manitoba Maple	13, 9, 4, (16)	7	Fair-Good	Good form and vigour; Growing in drainage feature.	Subject Lands	N/A	Remove Due to Development	1
1072	<i>Salix eufratica</i>	Crack Willow	20, 20, 15, 20, (28)	N/A	Dead	Stemming snag; Potential risk tree; Tree inaccessible to measure, DBH measurements estimated.	Subject Lands	N/A	Remove Due to Condition	N/A
1073	<i>Salix eufratica</i>	Crack Willow	29	8	Good	Good form and vigour.	Subject Lands	N/A	Remove Due to Development	2
1074	<i>Fraxinus pennsylvanica</i>	Green Ash	10, 9, 8, 7, 8, (31)	8	Fair	Moderate dieback and thinning; Stems fork near ground; Included bark; Evidence of EAB infestation.	Subject Lands	N/A	Remove Due to Development	1
1075	<i>Acer negundo</i>	Manitoba Maple	6, 9, 3, (11)	6	Fair-Good	Minor dieback and thinning; Stems fork near ground; Included bark.	Subject Lands	N/A	Remove Due to Development	1
1076	<i>Acer negundo</i>	Manitoba Maple	12, 3, 4, (16)	7	Fair-Good	Minor dieback and thinning; Stems fork near ground; Included bark.	Subject Lands	N/A	Remove Due to Development	1
1077	<i>Fraxinus pennsylvanica</i>	Green Ash	8, 8, 3, (12)	6	Poor	Significant dieback and thinning; Larger two stems are dead; Smaller stem is an epicormic shoot; Decline likely due to EAB infestation.	Subject Lands	N/A	Remove Due to Condition	1
1078	<i>Acer negundo</i>	Manitoba Maple	8, 5, (9)	6	Fair-Good	Good form and vigour.	Subject Lands	N/A	Remove Due to Development	0
1079	<i>Acer negundo</i>									

TREE INVENTORY TABLE (EAST SUBDIVISION)

Tag/Tree No.	Scientific Name	Common Name	DBH (cm)	Crown Diameter (m)	Condition1	Comments	Ownership	TPZ Radius2 (m)	Tree Preservation Recommendation	Compensation QTY
1389	<i>Acer negundo</i>	Manitoba Maple	50	8	Poor-Fair	Large rotting cavity at base; Wound wood; Structurally unsafe; Epicormic shoots at base and along stem at breast height.	Co-owned between Subject Lands and Municipal Road Allowance	N/A	Remove Due to Condition	3
1390	<i>Prunus domestica</i>	Damson Plum	15, 4, 4, (16)	5	Poor	Significant dieback and thinning; Peeling bark; Stems fork below breast height; Included bark.	Municipal Road Allowance	N/A	Remove Due to Condition	1
1391	<i>Prunus domestica</i>	Damson Plum	8, 4, (9)	5	Fair-Good	Stems fork near ground; Included bark; Minor dieback and thinning.	Municipal Road Allowance	N/A	Remove Due to Development	0
1392	<i>Prunus domestica</i>	Damson Plum	13, 8, 4, (16)	5	Fair-Good	Minor dieback and thinning; Stems fork near ground; Included bark; Sap ooze.	Municipal Road Allowance	N/A	Remove Due to Development	1
1393	<i>Prunus domestica</i>	Damson Plum	3, 3, 3, 3, 2, (6)	6	Fair-Good	Minor dieback and thinning; Stems fork near ground; Included bark.	Municipal Road Allowance	N/A	Remove Due to Development	0
1394	<i>Prunus domestica</i>	Damson Plum	5, 3, (6)	4	Good	Good vigour; Stems fork near ground; Included bark.	Municipal Road Allowance	N/A	Remove Due to Development	0
1395	<i>Juniperus virginiana</i>	Eastern Red Cedar	12	5	Good	Good form and vigour.	Municipal Road Allowance	N/A	Remove Due to Development	1
1396	<i>Juniperus virginiana</i>	Eastern Red Cedar	12	6	Good	Good form and vigour; Wide spreading branches.	Municipal Road Allowance	N/A	Remove Due to Development	1
1397	<i>Juniperus virginiana</i>	Eastern Red Cedar	8, 8, (11)	6	Good	Good vigour; Shrub form; Stems fork near ground; Included bark.	Municipal Road Allowance	N/A	Remove Due to Development	1
1398	<i>Ulmus americana</i>	American Elm	34	N/A	Dead	Standing snag; Potential risk tree.	Subject Lands	N/A	Remove Due to Condition	N/A
1399	<i>Tilia americana</i>	Basswood	49	12	Good	Good form and vigour; Full healthy crown.	Co-owned between Subject Lands and Canadian Pacific Railway Right-of-Way	N/A	Remove Due to Development	3
1400	<i>Acer negundo</i>	Manitoba Maple	15	8	Fair-Good	Minor dieback and thinning.	Co-owned between Subject Lands and Canadian Pacific Railway Right-of-Way	N/A	Remove Due to Development	1
1401	<i>Acer negundo</i>	Manitoba Maple	8, 8, (11)	8	Fair-Good	Minor dieback and thinning; Stems fork near ground; Included bark.	Co-owned between Subject Lands and Canadian Pacific Railway Right-of-Way	1.2	Preserve	N/A
1402	<i>Acer negundo</i>	Manitoba Maple	15, 5, (16)	8	Fair-Good	Minor dieback and thinning; Stems fork near ground; Included bark.	Co-owned between Subject Lands and Canadian Pacific Railway Right-of-Way	1.2	Preserve	N/A
1403	<i>Acer negundo</i>	Manitoba Maple	15, 15, (21)	8	Fair-Good	Minor dieback and thinning; Stems fork near ground; Included bark.	Co-owned between Subject Lands and Canadian Pacific Railway Right-of-Way	1.8	Preserve	N/A
1404	<i>Ulmus americana</i>	American Elm	14	7	Good	Good form and vigour.	Subject Lands	N/A	Remove Due to Development	1
1405	<i>Acer negundo</i>	Manitoba Maple	13	6	Fair-Good	Minor dieback and thinning.	Subject Lands	N/A	Remove Due to Development	1
1406	<i>Ulmus americana</i>	American Elm	11	6	Good	Good form and vigour.	Co-owned between Subject Lands and Canadian Pacific Railway Right-of-Way	1.2	Preserve	N/A
1407	<i>Acer negundo</i>	Manitoba Maple	15, 15, (21)	8	Fair-Good	Minor dieback and thinning; Stems fork near ground; Included bark.	Subject Lands	N/A	Remove Due to Development	2
1408	<i>Acer negundo</i>	Manitoba Maple	45	8	Fair-Good	Minor dieback and thinning.	Co-owned between Subject Lands and Canadian Pacific Railway Right-of-Way	3	Preserve	N/A
1409	<i>Acer negundo</i>	Manitoba Maple	10	6	Fair-Good	Minor dieback and thinning.	Subject Lands	N/A	Remove Due to Development	1
1410	<i>Acer negundo</i>	Manitoba Maple	15, 15, 5, (22)	8	Fair-Good	Minor dieback and thinning; Stems fork near ground; Included bark; Epicormic shoots at base.	Subject Lands	N/A	Remove Due to Development	2
1411	<i>Acer negundo</i>	Manitoba Maple	14	6	Good	Good form and vigour.	Subject Lands	N/A	Remove Due to Development	1
1412	<i>Acer negundo</i>	Manitoba Maple	40	10	Fair-Good	Minor dieback and thinning; Stems fork above breast height; Included bark.	Subject Lands	N/A	Remove Due to Development	3
1413	<i>Ulmus americana</i>	American Elm	40	N/A	Dead	Standing snag; Potential risk tree.	Subject Lands	N/A	Remove Due to Condition	N/A
1414	<i>Tilia americana</i>	Basswood	39	10	Good	Good form and vigour; Stem growing adjacent to wire property fence.	Subject Lands	N/A	Remove Due to Development	3
1415	<i>Tilia americana</i>	Basswood	34	9	Good	Good form and vigour; Stem growing adjacent to wire property fence.	Subject Lands	N/A	Remove Due to Development	2
1416	<i>Malus pumila</i>	Common Apple	30, 25, (39)	8	Fair	Moderate dieback and thinning; Stems fork near ground; Included bark; Fruiting at time of surveys; Overgrown with Common Buckthorn.	Subject Lands	N/A	Remove Due to Development	3
1417	<i>Malus pumila</i>	Common Apple	30, 20, (36)	8	Fair	Moderate dieback and thinning; Stems fork near ground; Included bark; Fruiting at time of surveys; Overgrown with Common Buckthorn.	Subject Lands	N/A	Remove Due to Development	3
1418	<i>Malus pumila</i>	Common Apple	30, 35, 30, (55)	8	Fair	Moderate dieback and thinning; Stems fork near ground; Included bark; Fruiting at time of inventory; Overgrown with Common Buckthorn.	Subject Lands	N/A	Remove Due to Development	4
1419	<i>Malus pumila</i>	Common Apple	20, 25, (32)	7	Poor	Significant dieback and thinning; Rotting cavities in one stem; Stems fork below breast height; Included bark.	Subject Lands	N/A	Remove Due to Condition	2
1420	<i>Ulmus americana</i>	American Elm	46	14	Good	Good form and vigour; Wide spreading branches; Large mature tree.	Subject Lands	N/A	Remove Due to Development	3
1421	<i>Ulmus americana</i>	American Elm	18	8	Good	Good form and vigour.	Subject Lands	N/A	Remove Due to Development	1
1422	<i>Carya cordiformis</i>	Bitternut Hickory	48	12	Good	Good form and vigour; Full healthy crown; Large mature tree.	Subject Lands	N/A	Remove Due to Development	3
1423	<i>Carya cordiformis</i>	Bitternut Hickory	35, 21, (41)	10	Good	Good vigour; Stems fork near ground; Included bark; Full healthy crown.	Subject Lands	N/A	Remove Due to Development	3
1424	<i>Carya cordiformis</i>	Bitternut Hickory	25	8	Good	Good form and vigour; Full healthy crown.	Subject Lands	N/A	Remove Due to Development	2
1425	<i>Carya cordiformis</i>	Bitternut Hickory	22	8	Good	Good form and vigour.	Subject Lands	N/A	Remove Due to Development	2
1426	<i>Carya cordiformis</i>	Bitternut Hickory	34	12	Good	Good form and vigour; Full healthy crown.	Subject Lands	N/A	Remove Due to Development	2
1427	<i>Carya cordiformis</i>	Bitternut Hickory	35	12	Good	Good form and vigour; Full healthy crown; Good root flare.	Subject Lands	N/A	Remove Due to Development	2
1428	<i>Carya cordiformis</i>	Bitternut Hickory	10	6	Good	Good form and vigour.	Subject Lands	N/A	Remove Due to Development	1
1429	<i>Carya cordiformis</i>	Bitternut Hickory	13	7	Good	Good form and vigour.	Subject Lands	N/A	Remove Due to Development	1
1430	<i>Carya cordiformis</i>	Bitternut Hickory	10	5	Good	Good form and vigour.	Subject Lands	N/A	Remove Due to Development	1
1477	<i>Acer negundo</i>	Manitoba Maple	25, 25, 10, (37)	8	Fair-Good	Minor dieback and thinning; Stems fork near ground; Included bark; Located off property, DBH measurement estimated, Tag from previous inventory.	0 Humber Station Road	N/A	Remove Due to Development	3
NT22	<i>Ulmus americana</i>	American Elm	50	N/A	Dead	Standing snag; Potential risk tree; Inaccessible to tag; DBH measurement estimated.	Subject Lands	N/A	Remove Due to Condition	N/A
NT23	<i>Ulmus americana</i>	American Elm	20	N/A	Dead	Standing snag; Inaccessible to tag; DBH measurement estimated.	Canadian Pacific Railway Right-of-Way	N/A	Preserve	N/A
NT24	<i>Ulmus americana</i>	American Elm	15, 15, (21)	N/A	Dead	Standing snag; Inaccessible to tag; DBH measurement estimated.	Canadian Pacific Railway Right-of-Way	N/A	Preserve	N/A
NT25	<i>Salix euina</i>	Crack Willow	25, 25, (35)	8	Fair-Good	Minor dieback and thinning; Stems fork near ground; Included bark; Located off property, DBH measurement estimated.	Canadian Pacific Railway Right-of-Way	2.4	Preserve	N/A
NT26	<i>Acer negundo</i>	Manitoba Maple	35	9	Good	Good vigour; Located off property, DBH measurement estimated; Branches overhang onto subject property.	Canadian Pacific Railway Right-of-Way	2.4	Preserve	N/A
NT27	<i>Acer negundo</i>	Manitoba Maple	30	7	Fair-Good	Minor dieback and thinning; Located off property, DBH measurement estimated.	Canadian Pacific Railway Right-of-Way	2.4	Preserve	N/A
NT28	<i>Acer negundo</i>	Manitoba Maple	25, 25, (35)	8	Fair-Good	Minor dieback and thinning; Stems fork near ground; Included bark; Located off property, DBH measurement estimated.	Canadian Pacific Railway Right-of-Way	2.4	Preserve	N/A
NT29	<i>Acer negundo</i>	Manitoba Maple	20, 15, (25)	8	Fair-Good	Minor dieback and thinning; Stems fork near ground; Included bark; Located off property, DBH measurement estimated.	Canadian Pacific Railway Right-of-Way	1.8	Preserve	N/A
NT30	<i>Tilia americana</i>	Basswood	35, 35, 25, (55)	10	Good	Good vigour; Full healthy crown; Stems fork near ground; Included bark; Inaccessible to tag, DBH measurement estimated.	Subject Lands	N/A	Remove Due to Development	4
Total Compensation										68

1. The tree health condition rating was based on factors that could include one or a combination of:
 Poor Condition – Severe dieback, significant lean, decayed, missing leader, significant disease presence
 Fair Condition – Moderate dieback and/or lean, limb defects, multiple stems, moderate foliage damage from stress
 Good Condition – Healthy vigorous growth, no or minor visible defects or damage
 2. The TPZ is the minimum distance required for tree preservation determined in accordance with ISA guidelines.

Humberking East Tree Groups				
Tree Group E		Size Class (DBH in cm)		
Scientific Name	Common Name	5-10	11-20	21-30
<i>Prunus domestica</i>	Damson Plum	0	8	0
<i>Acer negundo</i>	Manitoba Maple	0	4	0
Compensation Subtotal		0	12	0
Tree Group F		Size Class (DBH in cm)		
Scientific Name	Common Name	5-10	11-20	21-45
<i>Tilia americana</i>	Basswood	0	0	10
<i>Acer negundo</i>	Manitoba Maple	0	0	1
Compensation Subtotal		0	0	22



KEYMAP

LEGEND			
1	REVISIONS	DATE	BY:
2	ADRESSED AGENCY COMMENTS	2024/09/20	JS
3	BASE PLAN UPDATED	2024/05/27	AH
4	ISSUED FOR SUBMISSION	2023/11/04	AH

Notes: Scale shown is for a 91.44 cm x 60.96 cm page. For illustrative purposes. Do not scale.			
SCALE			
NORTH ARROW			

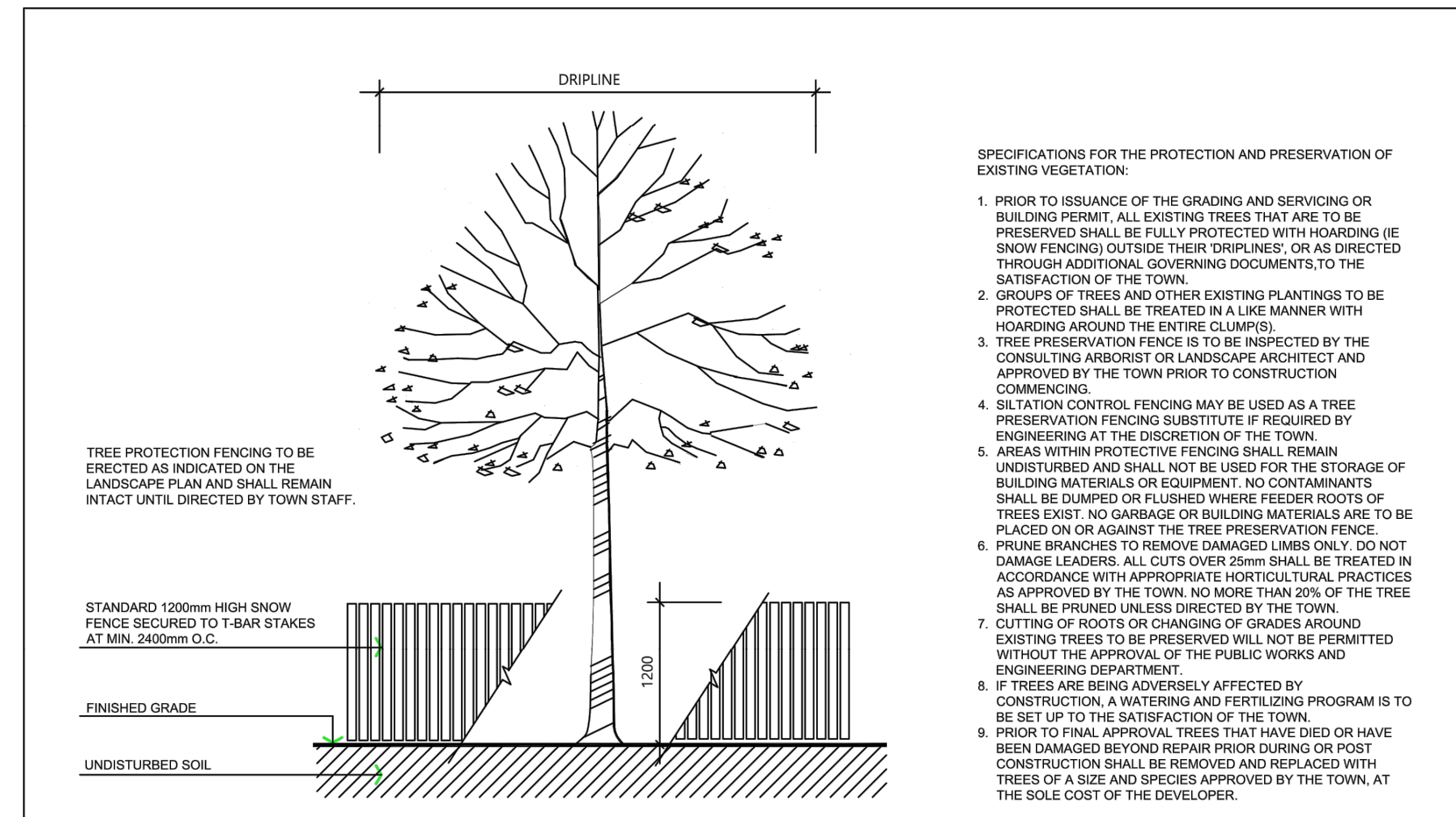


CLIENT
HUMBERKING DEVELOPMENTS LIMITED

PROJECT
MACVILLE HUMBERKING EAST DRAFT PLAN OF SUBDIVISION

SHEET TITLE
TREE INVENTORY TABLE (EAST SUBDIVISION)

DESIGN BY: ...	PROJECT NO: 223212
DRAWN BY: CS	FIGURE NO:
CHECKED BY: AH/TS	TP-7
DATE: 23 September 2024	



SPECIFICATIONS FOR THE PROTECTION AND PRESERVATION OF EXISTING VEGETATION:

- PRIOR TO ISSUANCE OF THE GRADING AND SERVING OR BUILDING PERMIT, ALL EXISTING TREES THAT ARE TO BE PRESERVED SHALL BE FULLY PROTECTED WITH HOARDING OR SNOW FENCING OUTSIDE THEIR DRIPLINE, OR AS DIRECTED THROUGH ADDITIONAL GOVERNING DOCUMENTS TO THE SATISFACTION OF THE TOWN.
- GROUNDS OF TREES AND OTHER EXISTING PLANTINGS TO BE PROTECTED SHALL BE TREATED IN A LIKE MANNER WITH HOARDING AROUND THE ENTIRE CIRCUMFERENCE.
- TREE PRESERVATION FENCE IS TO BE INSPECTED BY THE CONSULTING ARBORIST OR LANDSCAPE ARCHITECT AND APPROVED BY THE TOWN PRIOR TO CONSTRUCTION COMMENCING.
- SILTATION CONTROL FENCING MAY BE USED AS A TREE PRESERVATION FENCING SUBSTITUTE IF REQUIRED BY ENGINEERING AT THE DISCRETION OF THE TOWN.
- AREAS WITHIN PROTECTIVE FENCING SHALL REMAIN UNDISTURBED AND SHALL NOT BE USED FOR THE STORAGE OF BUILDING MATERIALS OR EQUIPMENT. NO CONTAMINANTS SHALL BE DUMPED OR FLUSHED WHERE FEEDER ROOTS OF TREES EXIST. NO GARBAGE OR BUILDING MATERIALS ARE TO BE PLACED ON OR AGAINST THE TREE PRESERVATION FENCE.
- PRUNE BRANCHES TO REMOVE DAMAGED LIMBS ONLY. DO NOT DAMAGE LEADERS. ALL CUTS OVER 25mm SHALL BE TREATED IN ACCORDANCE WITH APPROPRIATE HORTICULTURAL PRACTICES AS APPROVED BY THE TOWN. NO MORE THAN 20% OF THE TREE SHALL BE PRUNED UNLESS DIRECTED BY THE TOWN.
- CUTTING OF ROOTS OR CHANGING OF GRADES AROUND EXISTING TREES TO BE PRESERVED WILL NOT BE PERMITTED WITHOUT THE APPROVAL OF THE PUBLIC WORKS AND ENGINEERING DEPARTMENT.
- IF TREES ARE BEING ADVERSELY AFFECTED BY CONSTRUCTION, A WATERING AND FERTILIZING PROGRAM IS TO BE SET UP TO THE SATISFACTION OF THE TOWN.
- PRIOR TO FINAL APPROVAL, TREES THAT HAVE DIED OR HAVE BEEN DAMAGED BEYOND REPAIR PRIOR DURING OR POST CONSTRUCTION SHALL BE REMOVED AND REPLACED WITH TREES OF A SIZE AND SPECIES APPROVED BY THE TOWN, AT THE SOLE COST OF THE DEVELOPER.

TOWN OF CALEDON		3	STANDARD 707 NOW 606	JAN 18	APPR'D	C.C.	DATE: JUNE 08
TREE PRESERVATION		2	STANDARD No. 1138 NOW 707, NOTES EDIT	JUNE 08	DRAWN	abal	SCALE: NTS
		1	NOTE NO. 9 ADDED	MARCH 08			
NO.	REVISION	APPR'D	DATE	STANDARD No. 606			

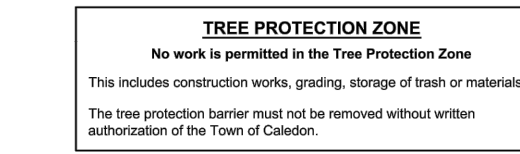
SPECIFICATIONS

A. General

The following Tree Preservation and Protection Measures will be undertaken to help eliminate and/or significantly reduce construction injury to all trees recommended for preservation. All temporary tree protection measures cited for retained trees must comply with the Town of Caledon Tree Protection Specifications and Details. Any variation from the standard tree protection measures must be approved in writing by the Town of Caledon.

B. Pre-Construction Phase

- Prior to construction, the trees to be preserved shall be protected with a Tree Protection Barrier. The barrier shall consist of 1.2m (4ft) high orange plastic snow fence wired to T-bars (see Town of Caledon Tree Preservation Fencing, STD 606).
- If applicable, attach a filter cloth 600mm high to the construction side of the hoarding to act as sediment control. Sediment control fencing shall meet or exceed OPSD-219-110, and be installed to the satisfaction of the Town of Caledon.
- All supports and bracing used to safely secure the barrier should be located outside the Tree Protection Zone (TPZ). All supports and bracing should minimize damage to roots.
- The TPZ fence is to be installed along the edge of the tree protection zones. This hoarding is to remain in place and remain in good condition throughout the entire duration of the project. Dismantling the tree protection barrier prior to approval by the Town of Caledon staff may constitute a contravention.
- The applicant shall notify the Town of Caledon and the consulting certified arborist or landscape architect to confirm that the tree preservation and protection measures at a pre-construction meeting.



- All contractors and site visitors should be informed of the tree preservation and protection measures at a pre-construction meeting.

specifications continued on next panel...

TOWN OF CALEDON		APPR'D	B.B.	DATE: AUGUST 17
TREE PRESERVATION STANDARD NOTES - PART 1		DRAWN	B.M.	SCALE: NTS
NO.	REVISION	APPR'D	DATE	STANDARD No. 710

SPECIFICATIONS continued from previous panel

C. During Construction Phase

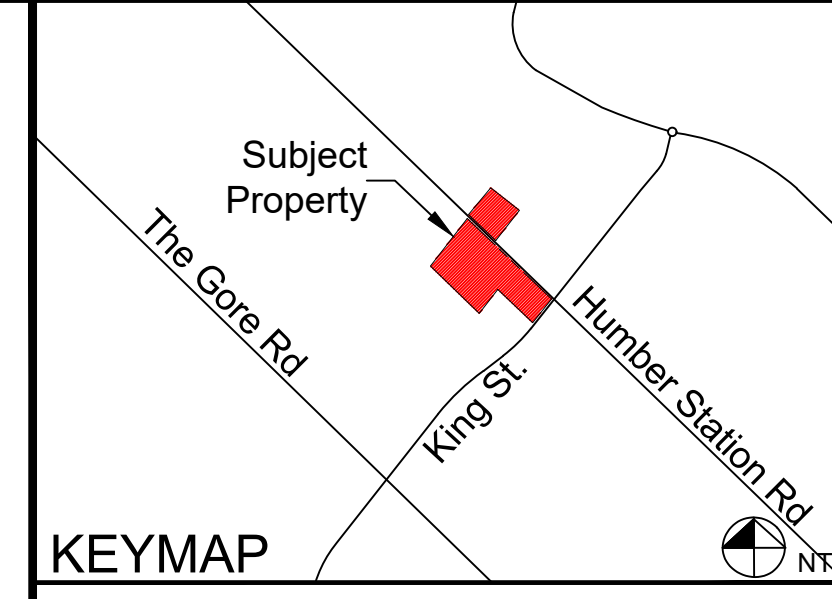
- All areas within the TPZ shall remain undisturbed for the duration of construction. There will be no grade changes, dumping, and storage of any materials, structures or equipment within these areas. The Tree Protection Barrier must not be removed without the written authorization of the Town of Caledon.
- Minor grading works will be permitted at the edge of the preservation zone as required to correct localized depressions, and blend to existing grades. This work to be undertaken under the direct supervision of an ISA certified arborist. A certified ISA arborist will undertake proper root pruning in accordance with acceptable arboriculture practices when and if roots of retained trees are to be exposed, damaged, or severed by construction work. The exposed roots will be backfilled with appropriate material as soon as possible to prevent desiccation. Root pruning prior to excavation will help prevent necessary damage to tree roots. The use of low pressure hydrovac to expose roots is recommended, at no additional cost.
- The Town of Caledon must be notified for all work that impacts the TPZ for temporary removal of a section of hoarding to gain access for fine grading or other works. All works are to be supervised by the Town of Caledon.
- No cables, wire or ropes of any kind shall be wrapped around or installed in trees to be preserved.
- No contaminants will be dumped or flushed in the TPZ areas or where feeder roots of trees exist (generally beyond the TPZ areas).
- Irrigate tree protection zones during drought conditions, June to September to reduce drought stress.
- Inspect the site daily to ensure hoarding is in place and in good condition. Inspect trees to monitor condition.

D. Post Construction Phase

- Following the completion of all site works including landscaping, and after review and approval by the Town of Caledon staff, the protective hoarding may be removed.
- After removal of the protective hoarding, the Tree Preservation Zones shall be inspected by the Town of Caledon staff. Any remaining dead, diseased, or hazardous limbs or trees are to be removed by an ISA certified arborist as directed by the consulting arborist or Town of Caledon staff.

end of specifications

TOWN OF CALEDON		APPR'D	B.B.	DATE: AUGUST 17
TREE PRESERVATION STANDARD NOTES - PART 2		DRAWN	B.M.	SCALE: NTS
NO.	REVISION	APPR'D	DATE	STANDARD No. 711



LEGEND

1 TREE PROTECTION FENCING DETAIL AND NOTES
TP-8 NTS

Notes: Scale shown is for a 91.44 cm x 60.96 cm page. For illustrative purposes. Do not scale.

NO	REVISIONS	DATE	BY:
6			
5			
4			
3	ADDRESSED AGENCY COMMENTS	2024/09/20	JS
2	BASE PLAN UPDATED	2024/05/27	AH
1	ISSUED FOR SUBMISSION	2023/11/04	AH

NORTH ARROW

MARKHAM OFFICE
50 MAIN ST NORTH
MARKHAM, ON L3P 1X5

T) 905.201.7622
F) 905.201.8639

CLIENT: **HUMBERKING DEVELOPMENTS LIMITED**

PROJECT: **MACVILLE HUMBERKING EAST AND WEST DRAFT PLANS OF SUBDIVISION**

TREE PROTECTION DETAILS

DESIGN BY: ..	PROJECT #: 223212
DRAWN BY: CS	FIGURE #: TP-8
CHECKED BY: AH/TS	
DATE: 23 September 2024	