

COLUMBIA SQUARE

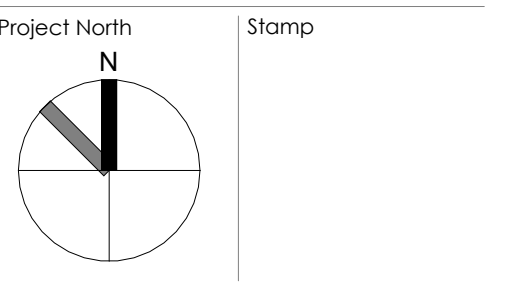
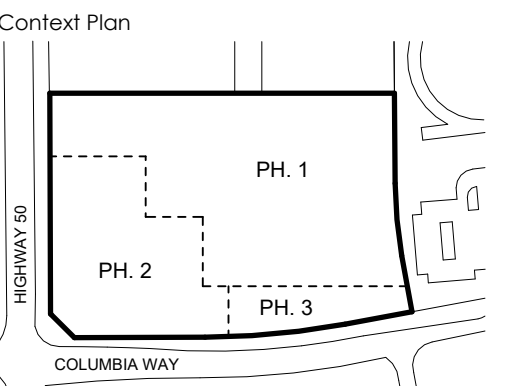
BOLTON, ONTARIO

© Copyright KFA Architects and Planners Inc. All rights reserved. No part of this document whether printed form or supplied on digital data may be reproduced, stored in a retrieval system or transmitted in any form or by any means, mechanical, photocopying, recording or otherwise without the prior written permission of KFA Architects and Planners Inc. All dimensions to be checked on site by the contractor. Drawings are not to be scaled, any discrepancies are to be reported to the Architect before proceeding with the work.

No.	Description	Date
1	ISSUED FOR OPA	2023/12/15
16	ISSUED FOR OPA/ZBA	2024/03/25
18	ISSUED FOR REVIEW	2024/06/24

No.	Description	Date

TOWN OF CALEDON
PLANNING
RECEIVED
June 25, 2024



Clients
Columbia Square Inc.

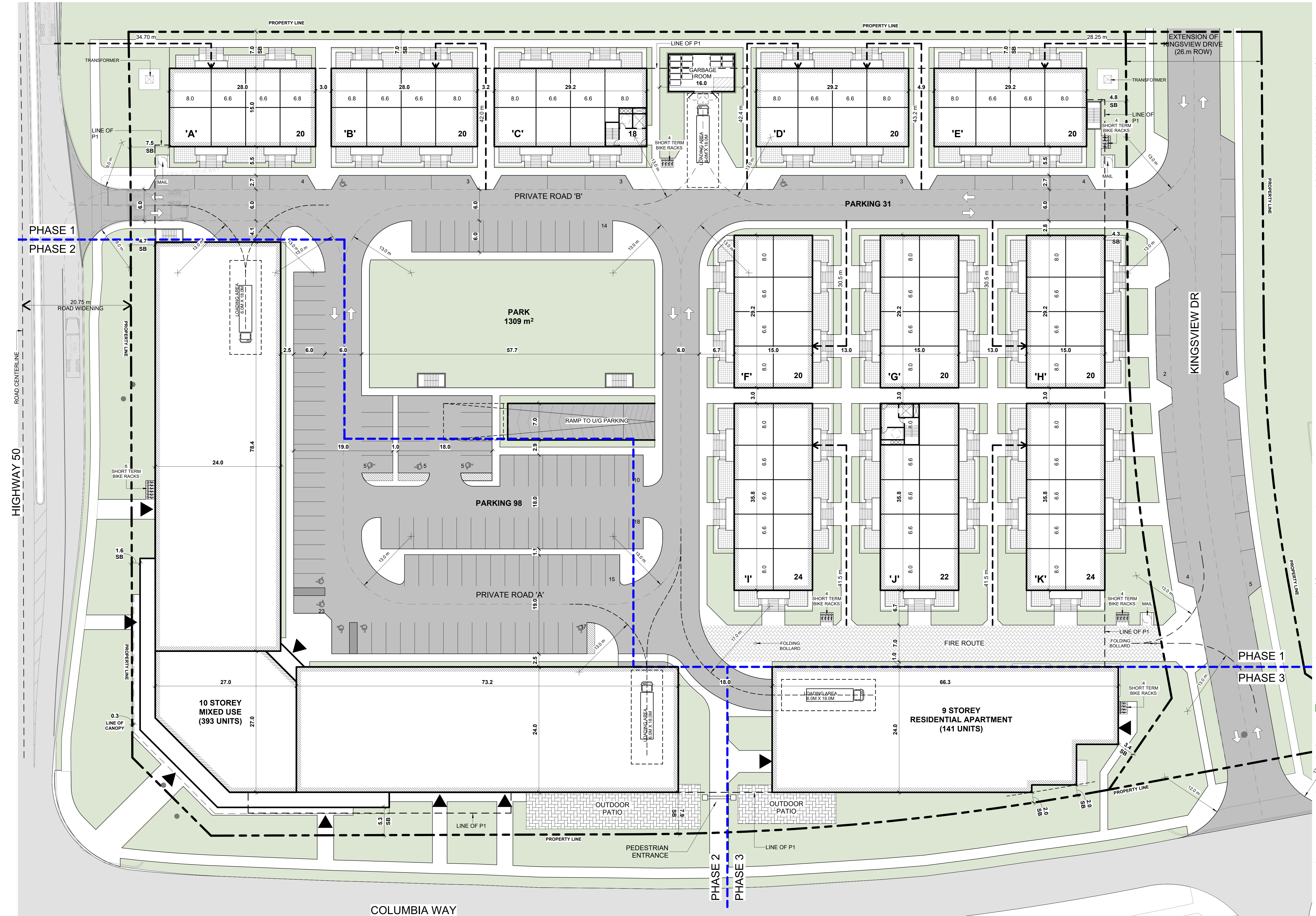
KFA architects + planners inc.
197 BRADDA AVE - SUITE 500
TORONTO, ONT. M5S 2E8
416.433.6286 - info@kfa.com
www.kfaarchitects.com

Project No.: 20065
Scale: 1:300
Issue Date: 12/15/2023
Drawn By:
Title

SITE PLAN PHASES
1, 2, 3

No.

A100



PHASE 1
PHASE 2

PHASE 1
PHASE 3

PHASE 2
PHASE 3