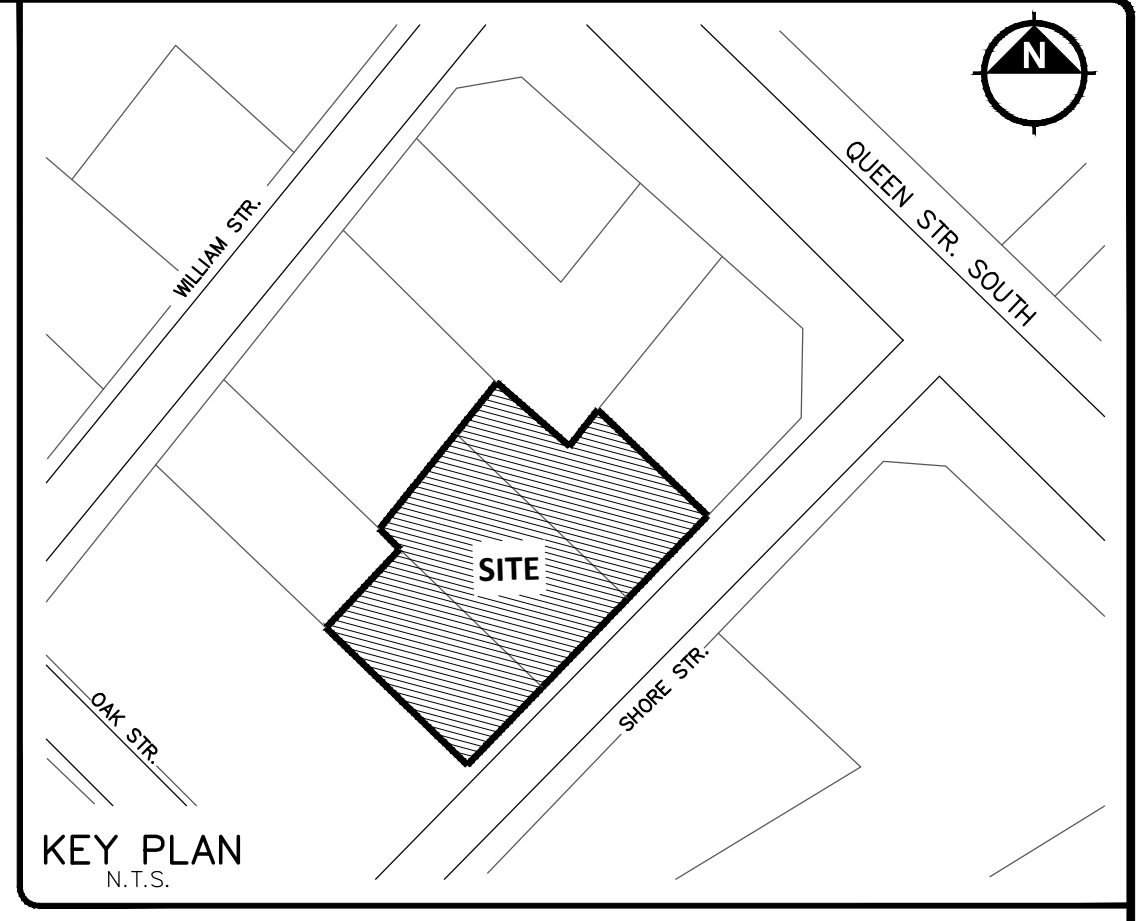
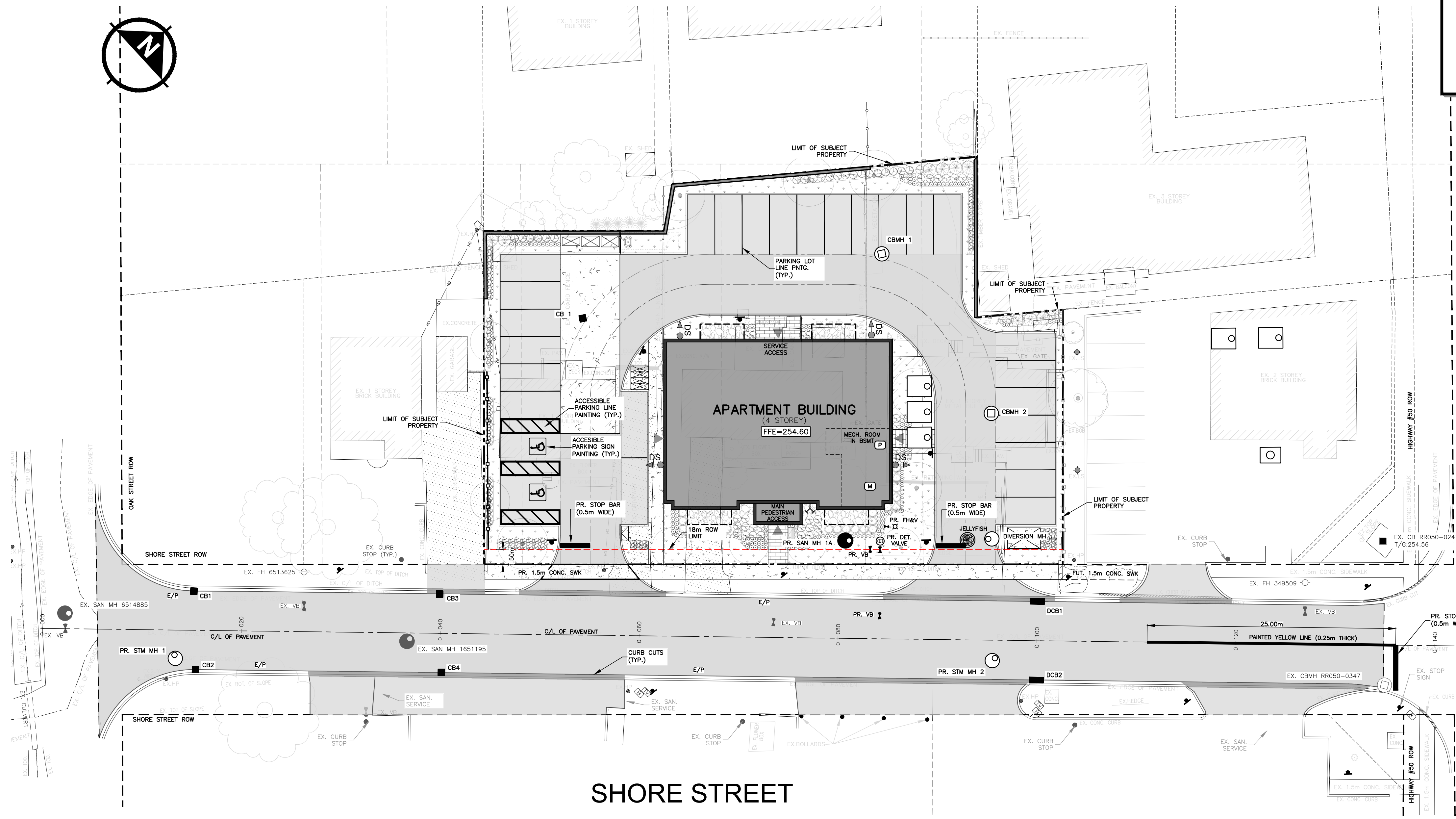


OAK STREET

**SUBMISSION
DRAWING**
NOT TO BE USED FOR CONSTRUCTION



**TOWN OF CALEDON
PLANNING
RECEIVED**
October 8, 2024



- LIMIT OF SUBJECT PROPERTY
- ⊕ VALVE AND BOX
- ⊕ HYDRANT
- CB □ CATCH BASIN
- DCB □ DOUBLE INLET CATCHBASIN
- ⊕ SANITARY MANHOLE
- ⊕ STORM MANHOLE
- ⊕ CATCH BASIN MANHOLE
- ⊕ DETECTOR CHECK VALVE IN CHAMBER
- ⊕ CONCRETE WALKWAY
- ⊕ LANDSCAPED AREAS
- DS ⊕ DOWNSPOUT (C/W OVERFLOW VALVE)
- GRADE BREAK
- ➔ MAJOR OVERLAND FLOW
- ⊕ TRAFFIC SIGN (REFER TO ARCHITECTURAL DWG FOR DETAILS)

SUBMISSION HISTORY		
No.	ISSUED FOR	DATE
1	ISSUED FOR FIRST SUBMISSION	24/09/24

REVISIONS			
No.	DESCRIPTION	BY	DATE

BENCHMARK NOTE:
ELEVATIONS SHOWN ARE RELATED TO GEODETIC DATUM AND ARE DERIVED FROM TOWN OF CALEDON BENCH MARK NO. 758657 HAVING A PUBLISHED ELEVATION OF 251.929m.

SURVEY COMPLETED BY:
GUIDO PAPA SURVEYING
9135 KELLE STREET, UNIT B7
VAUGHAN, ONTARIO
L4K 5J4

GUIDO PAPA REF. NO. 23-18-550-00
SURVEY COMPLETED ON:
AUGUST 11, 2023

PROFESSIONAL ENGINEER
T. DUMYAN
100072175
SEPT 23, 2024
PROVINCE OF ONTARIO

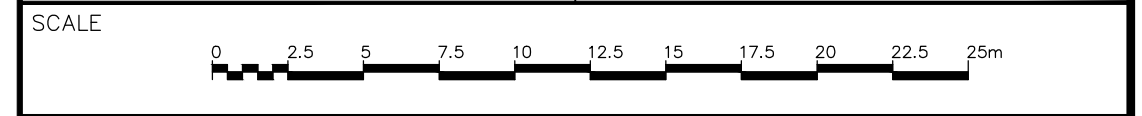
MUNICIPAL APPROVAL:
APPROVED AS TO FORM IN RELIANCE UPON THE PROFESSIONAL SKILL AND ABILITY OF URBANWORKS ENGINEERING CORP. AS TO DESIGN AND SPECIFICATION.

DIRECTOR OF DEVELOPMENT ENGINEERING
DAN TERZIEVSKI

DATE _____



**MULTI-UNIT RESIDENTIAL DEVELOPMENT
SHORE STREET URBANIZATION**
15,21,27 SHORE STREET, CALEDON



PAVEMENT MARKING PLAN

TOWN FILE: PRE-2023-0116 PRE-2023-0274	PROJECT No: 24-0002CA
REGION FILE:	
DATE: SEP 24, 2024	DESIGNED BY: DV
SCALE: HORZ. 1:250	DRAWN BY: DV
	CHECKED BY: TD

PM-01

PAVEMENT MARKING NOTE:3
ALL PAVEMENT MARKING AND LINE PAINTINGS TO BE AS PER OTM BOOK 11 - PAVEMENT, HAZARD, AND DELINEATION MARKINGS