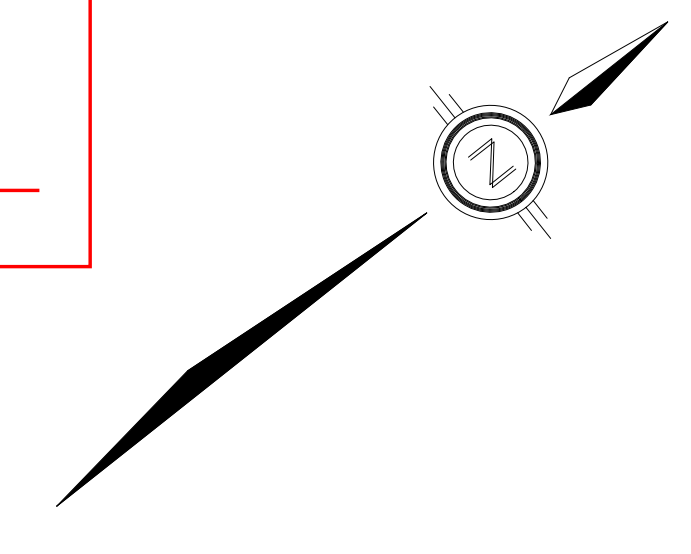


TOWN OF CALEDON
 PLANNING
 RECEIVED
 January 31, 2025

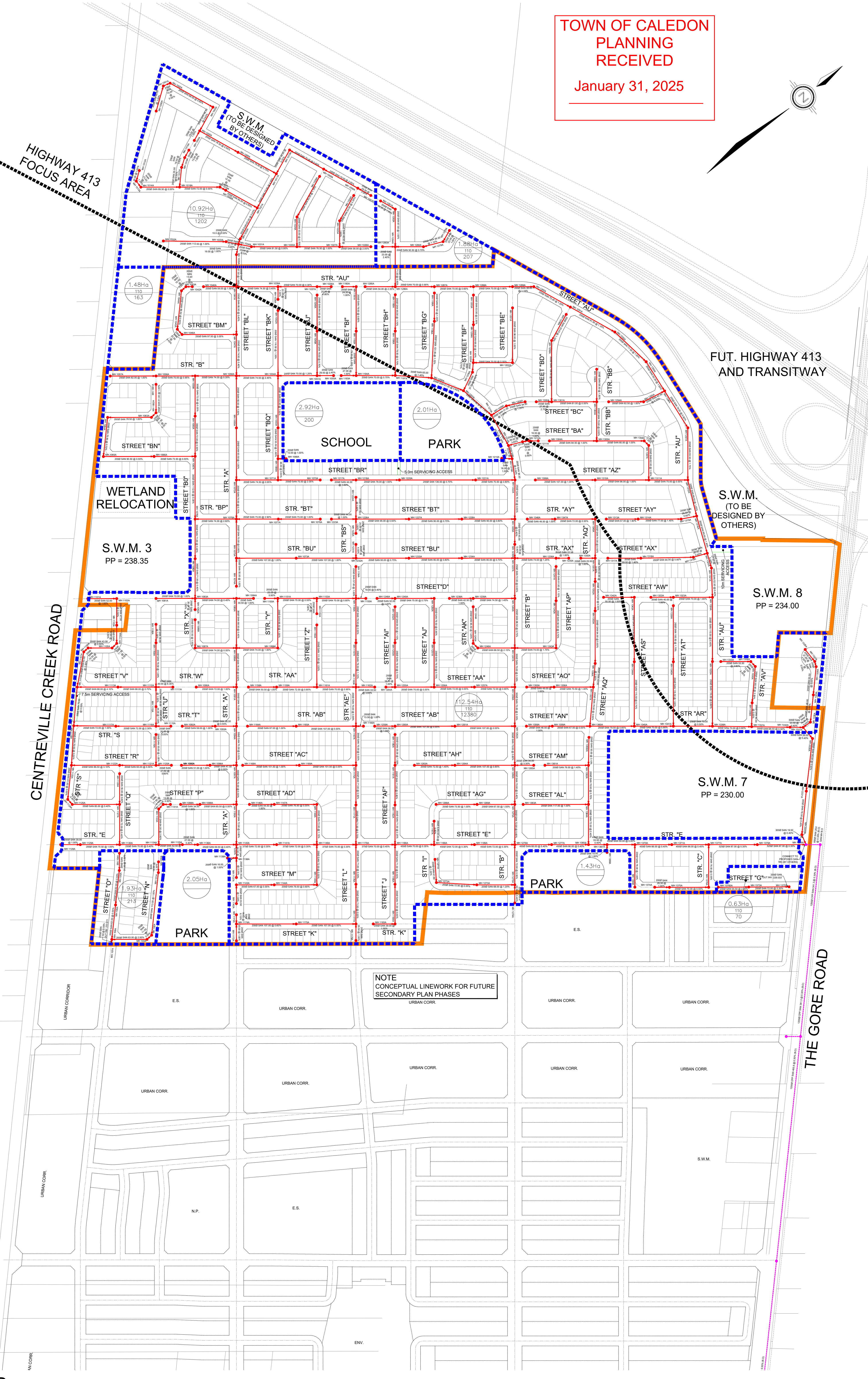


HIGHWAY 413
 FOCUS AREA

FUT. HIGHWAY 413
 AND TRANSITWAY

CENTREVILLE CREEK ROAD

THE GORE ROAD



S.W.M. 3
 PP = 238.35

S.W.M. (TO BE
 DESIGNED BY
 OTHERS)

S.W.M. 8
 PP = 234.00

S.W.M. 7
 PP = 230.00

NOTE
 CONCEPTUAL LINEWORK FOR FUTURE
 SECONDARY PLAN PHASES

LEGEND

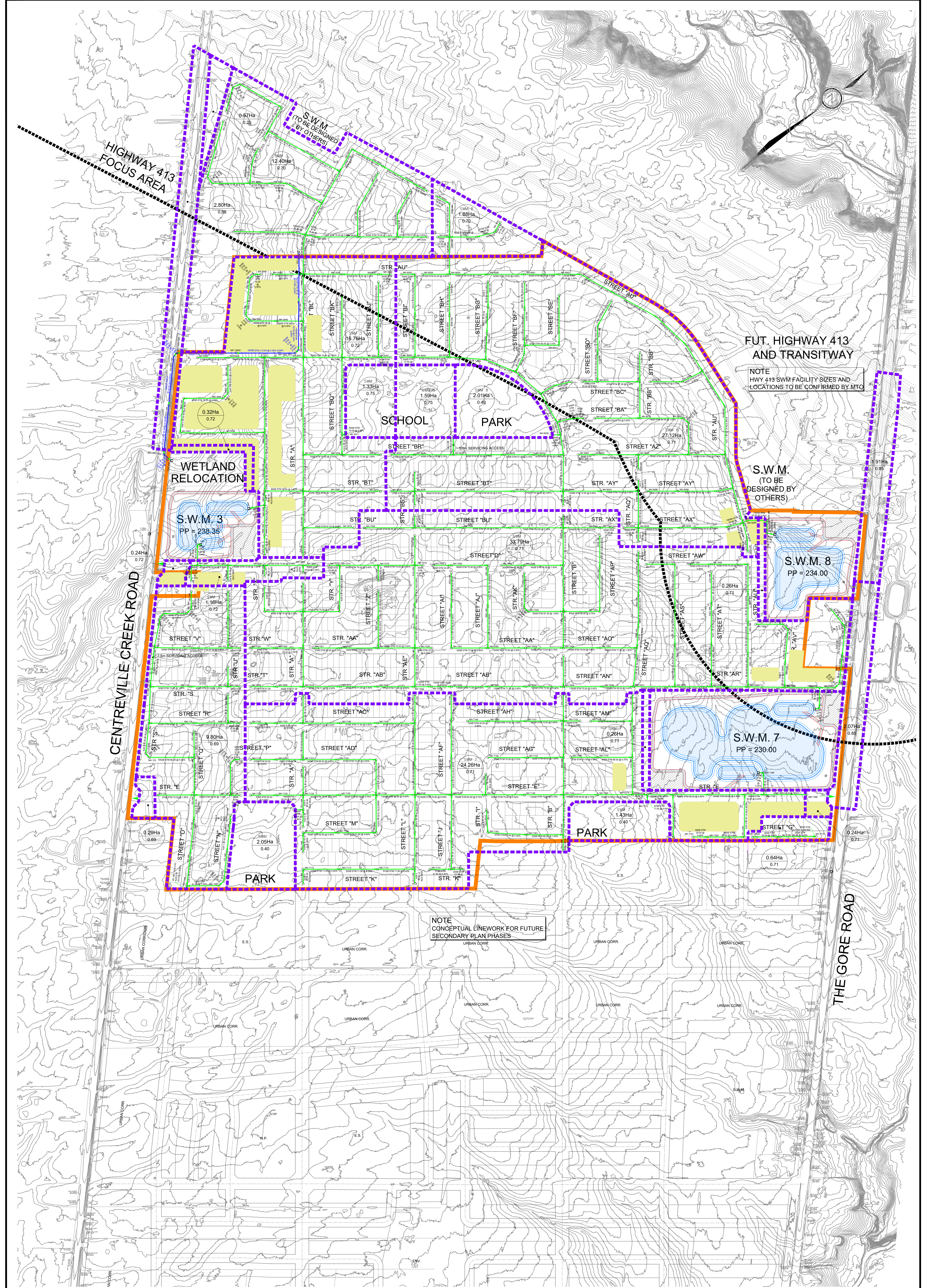
- SITE BOUNDARY
- PROPOSED SANITARY SEWER
- PROPOSED SANITARY MANHOLE
- PROPOSED SANITARY TRUNK SEWER BY OTHERS
- PROPOSED SANITARY MANHOLE BY OTHERS
- SANITARY DRAINAGE BOUNDARY

0.63Ha
 110
 70
 SANITARY DRAINAGE AREA IN HECTARES
 POPULATION PER HECTARE
 POPULATION

DSEL
 600 Alden Road, Suite 606
 Markham, Ontario, L3R 0E7
 Tel: (905) 475-3080
 Fax: (905) 475-3081
 www.DSEL.ca

GLOBAL
 PROPERTIES INC.
 WILDFIELD VILLAGE
 TOWN OF CALEDON

CONCEPTUAL SANITARY SERVICING PLAN	
SCALE: 1:3000	PROJECT No.: 24-1401
DATE: JAN 2025	DRAWING: 3



FUT. HIGHWAY 413 AND TRANSITWAY

NOTE
HWY 413 SWM FACILITY SIZES AND LOCATIONS TO BE CONFIRMED BY MTO

NOTE
CONCEPTUAL LINEWORK FOR FUTURE SECONDARY PLAN PHASES

LEGEND

- SITE BOUNDARY
 - - - STORM DRAINAGE BOUNDARY
 - PROPOSED STORM SEWER
 - PROPOSED CLEAN WATER SEWER
 - PROPOSED STORM MANHOLE
 - APPROX AREA OF RESIDENTIAL UNITS REQUIRING SUMP PUMPS
- | | |
|------------------|----------------------|
| S.W.M. 3
0.04 | DRAINAGE DESTINATION |
| S.W.M. 7
0.09 | TOTAL AREA |
| S.W.M. 8
0.72 | RUN-OFF COEFFICIENT |

TOWN OF CALEDON
PLANNING
RECEIVED

January 31, 2025



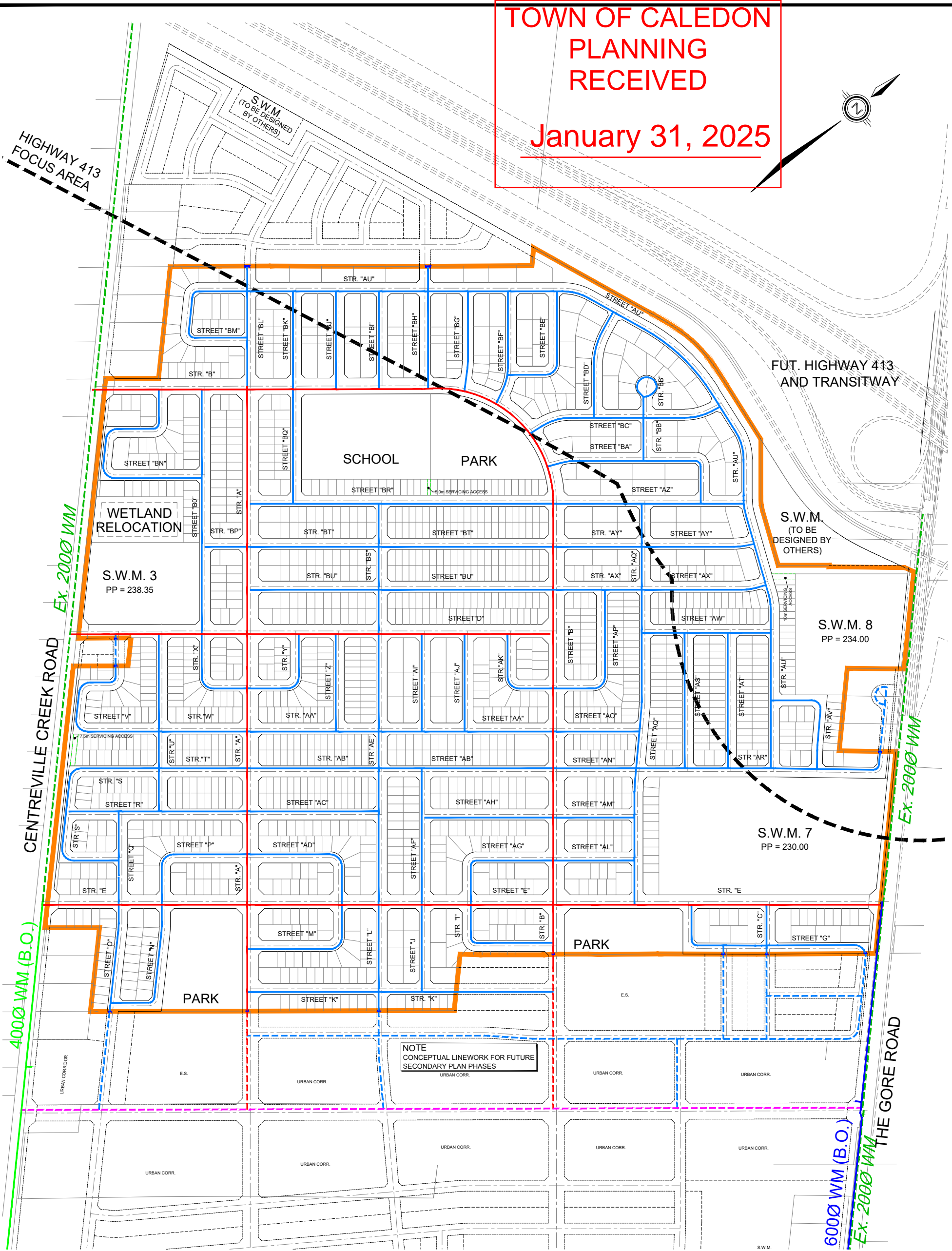
GLOBAL PROPERTIES INC.
WILDFIELD VILLAGE
TOWN OF CALEDON

CONCEPTUAL STORM SERVICING PLAN	
SCALE: 1:3000	PROJECT No.: 24-1401
DATE: JAN 2025	DRAWING: 2

**TOWN OF CALEDON
PLANNING
RECEIVED**
January 31, 2025



HIGHWAY 413
FOCUS AREA



LEGEND

- SITE BOUNDARY
- PROPOSED 2000 \emptyset WATERMAIN
- PROPOSED 3000 \emptyset WATERMAIN
- PROPOSED 4000 \emptyset WATERMAIN
- PROPOSED 2000 \emptyset WATERMAIN (B.O.)
- PROPOSED 3000 \emptyset WATERMAIN (B.O.)
- PROPOSED 4000 \emptyset WATERMAIN (B.O.)
- EXISTING 2000 \emptyset WATERMAIN
- 4000 \emptyset WATERMAIN (B.O.)
- 6000 \emptyset WATERMAIN (B.O.)
- PROPOSED PLUG
- EXISTING PLUG



600 Alden Road, Suite 606
Markham, Ontario, L3R 0E7
Tel. (905) 475-3080
Fax. (905) 475-3081
www.DSEL.ca

GLOBAL PROPERTIES INC.
WILDFIELD VILLAGE
TOWN OF CALEDON

**CONCEPTUAL WATERMAIN
SERVICING PLAN**

SCALE:	1:6000	PROJECT No.:	24-1401
DATE:	JAN 2025	FIGURE:	11