

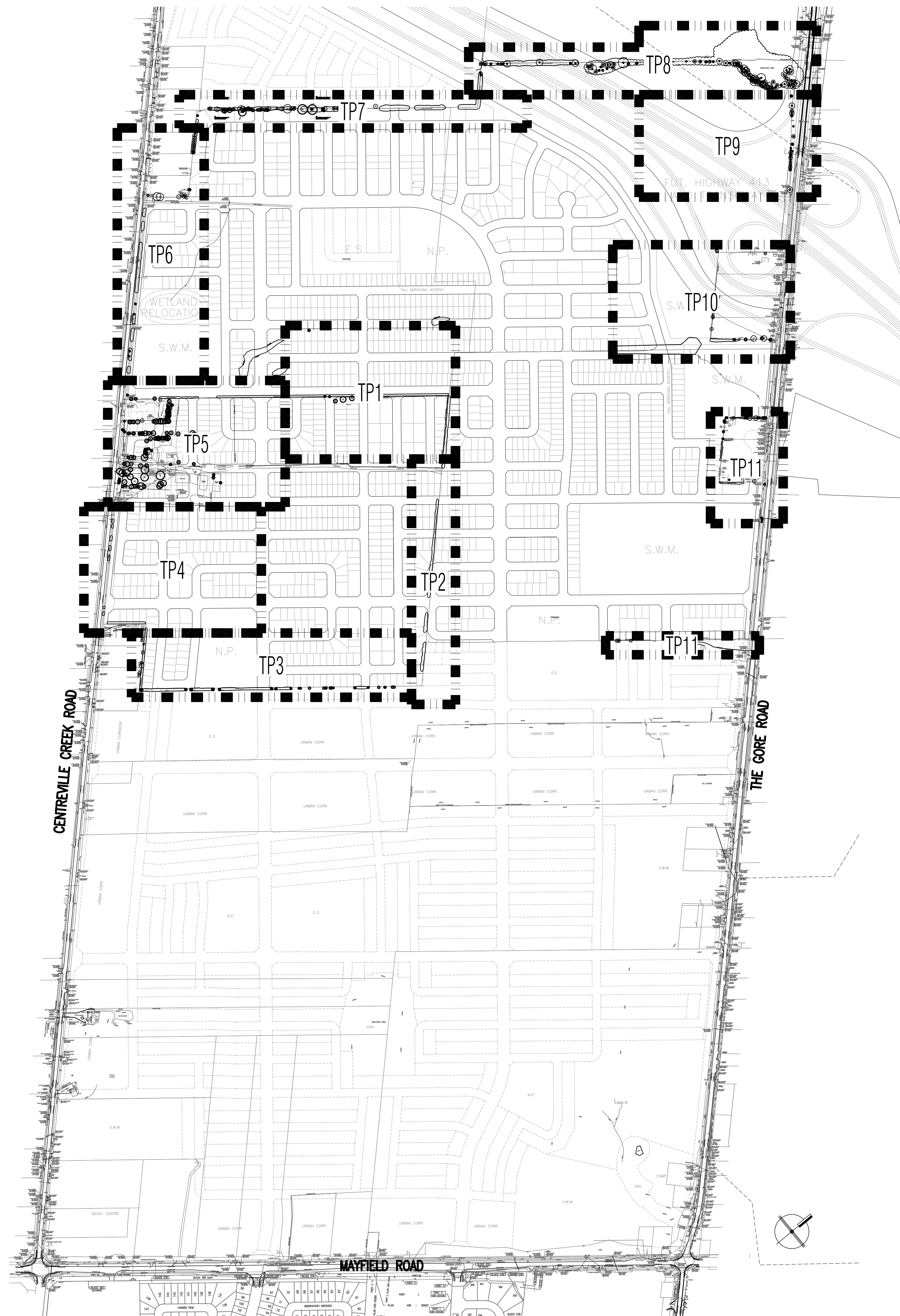
PLANS & DETAILS

PLANS

- TP1 TREE PRESERVATION PLAN
- TP2 TREE PRESERVATION PLAN
- TP3 TREE PRESERVATION PLAN
- TP4 TREE PRESERVATION PLAN
- TP5 TREE PRESERVATION PLAN
- TP6 TREE PRESERVATION PLAN
- TP7 TREE PRESERVATION PLAN
- TP8 TREE PRESERVATION PLAN
- TP9 TREE PRESERVATION PLAN
- TP10 TREE PRESERVATION PLAN
- TP11 TREE PRESERVATION PLAN

DETAILS

- TP12 TREE PRESERVATION DETAILS
- TP13 TREE PRESERVATION DETAILS
- TP14 TREE PRESERVATION DETAILS

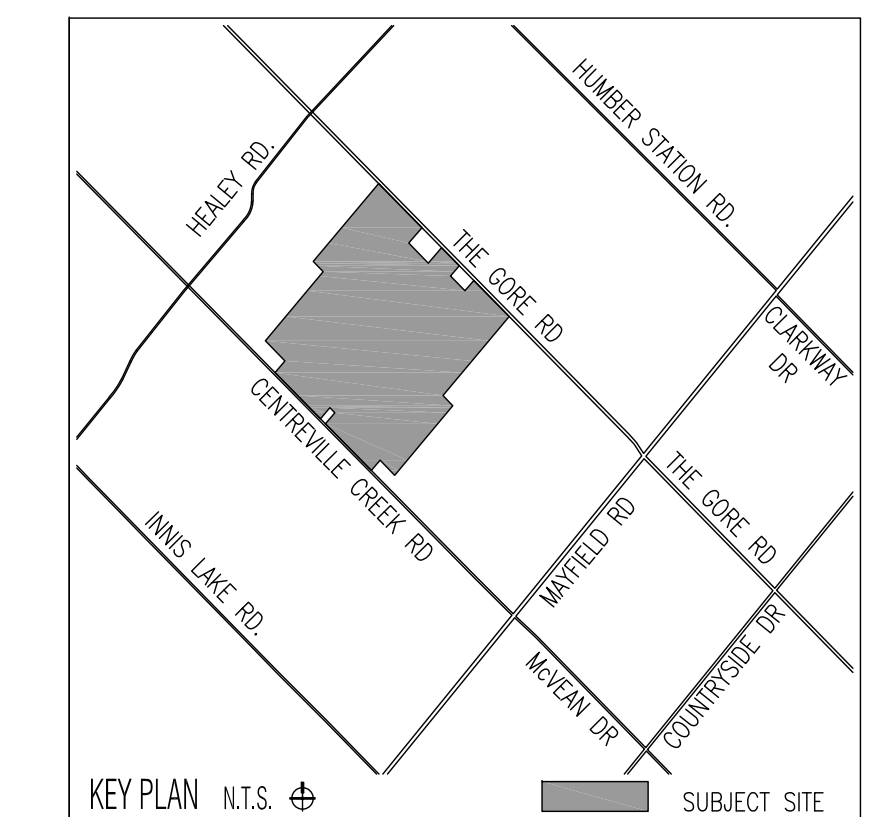


WILDFIELD VILLAGE

PARCELS 3, 4 & 5
TOWN OF CALEDON

TREE PRESERVATION PLAN

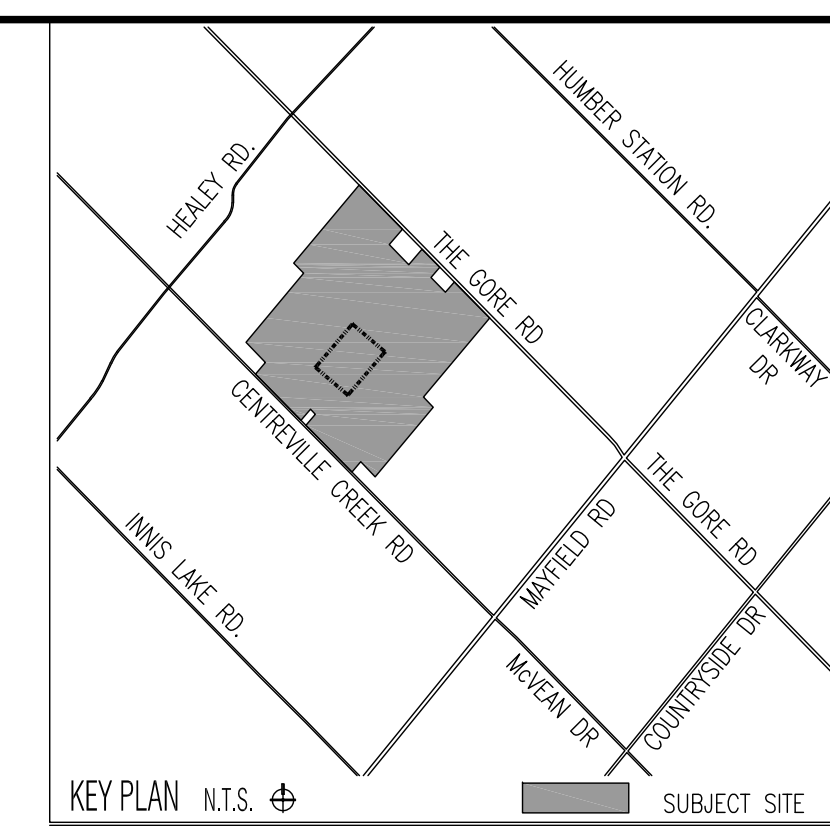
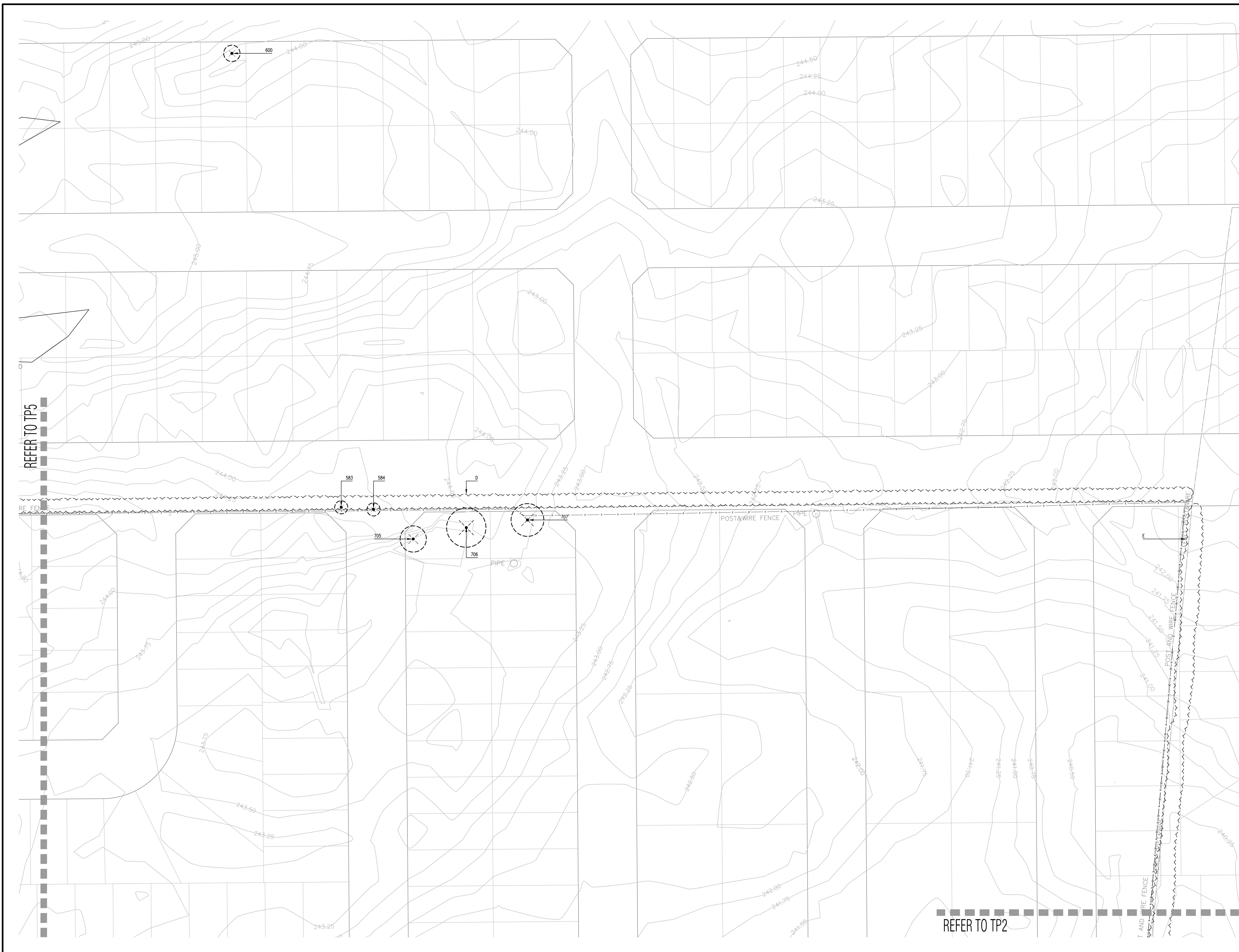
FOR SUBMISSION: JANUARY 24, 2025
USING BASE INFORMATION - SOLMAR (JAN.15, 2025) & R-PE (OCT.11, 2024 & JAN.13, 2025)



TOWN OF CALEDON
PLANNING
RECEIVED
January 31, 2025

PREPARED FOR
GLOBAL PROPERTIES INC.

cosburn nauboris LTD
landscape architects



LEGEND

- — — — — PROPERTY LINE
 - x — x — TREE PROTECTION FENCE
 - TREE LOCATION DETERMINED BY SURVEY
 - + TREE LOCATION ESTIMATED
 - EXISTING DECIDUOUS TREE TO REMAIN
TREE PROTECTION ZONE (TPZ)
 - ⊗ EXISTING CONIFEROUS TREE TO REMAIN
TREE PROTECTION ZONE (TPZ)
 - ⊗ EXISTING DECIDUOUS TREE TO BE REMOVED
TREE PROTECTION ZONE (TPZ)
 - ⊗ EXISTING CONIFEROUS TREE TO BE REMOVED
TREE PROTECTION ZONE (TPZ)
 - ⊘ EXISTING VEGETATION GROUPING TO REMAIN
 - ⊘ EXISTING VEGETATION GROUPING TO BE REMOVED
(ONLY ON SUBJECT SITE)
- *REFER TO TP12 & TP13 FOR TREE INVENTORY LISTS*
REFER TO TP14 FOR TREE PRESERVATION DETAILS

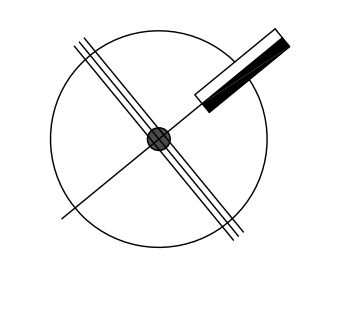
Base Information

Lotting plan information received in digital format from Solmar and received January 15, 2025.
Survey information received in digital format from R-PE Surveying and received October 11, 2024.
Additional tree survey information received in digital format from R-PE Surveying and received January 13, 2025.

1	For Submission	SW	25	01	24	
No	Revision		By	Yr	Mo	Da

All drawings and designs are the property of Cosburn Nauboris Limited and may not be used or reproduced without permission. This drawing must not be scaled.

Invalid Unless Signed Original

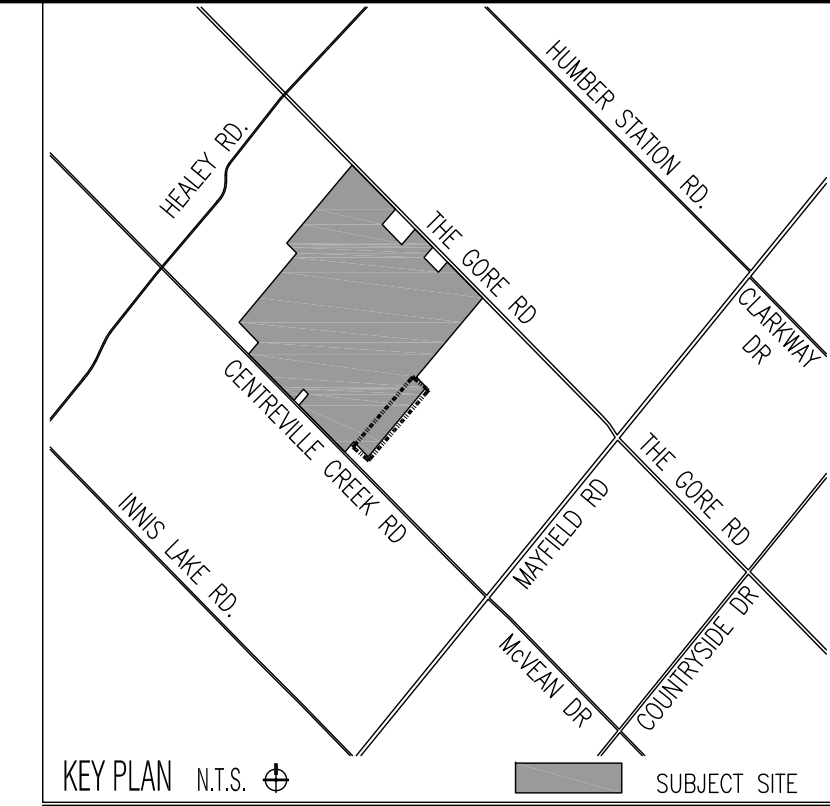
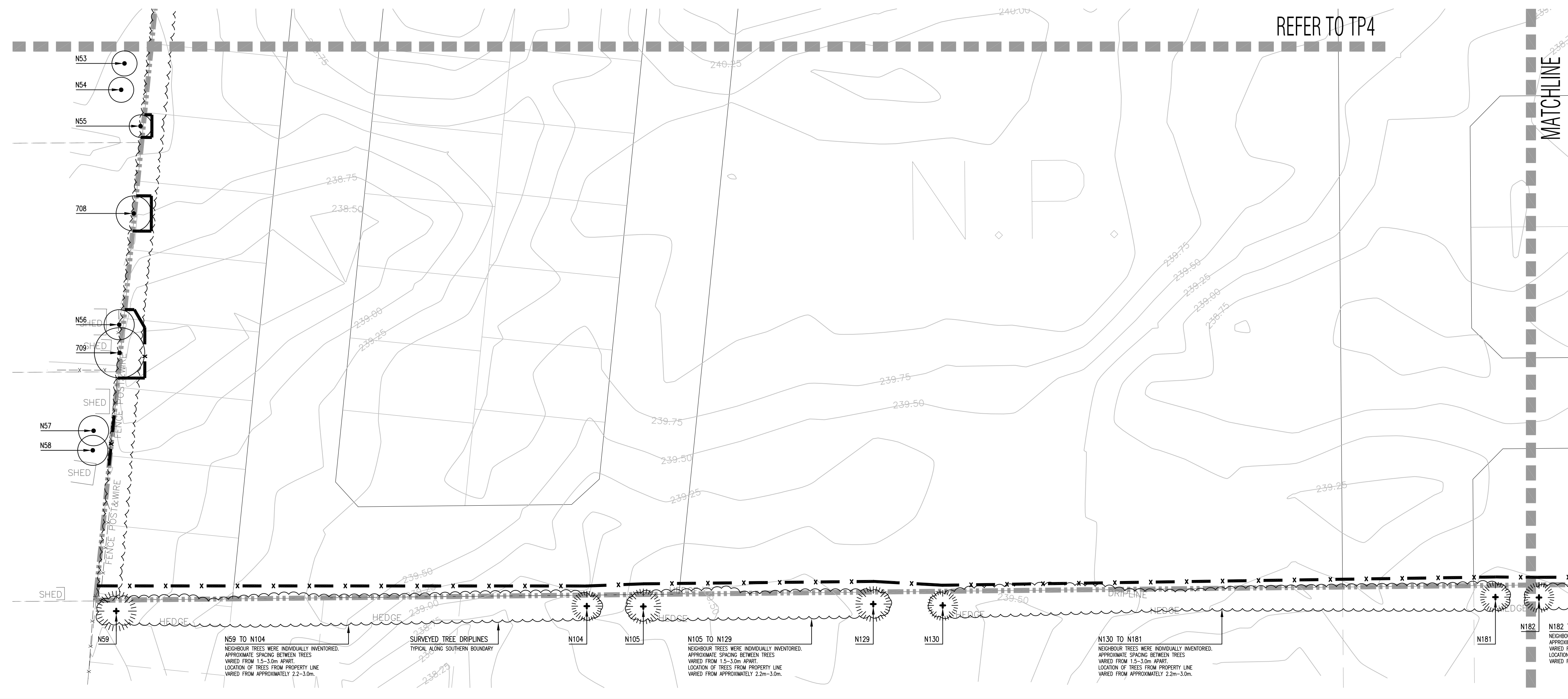
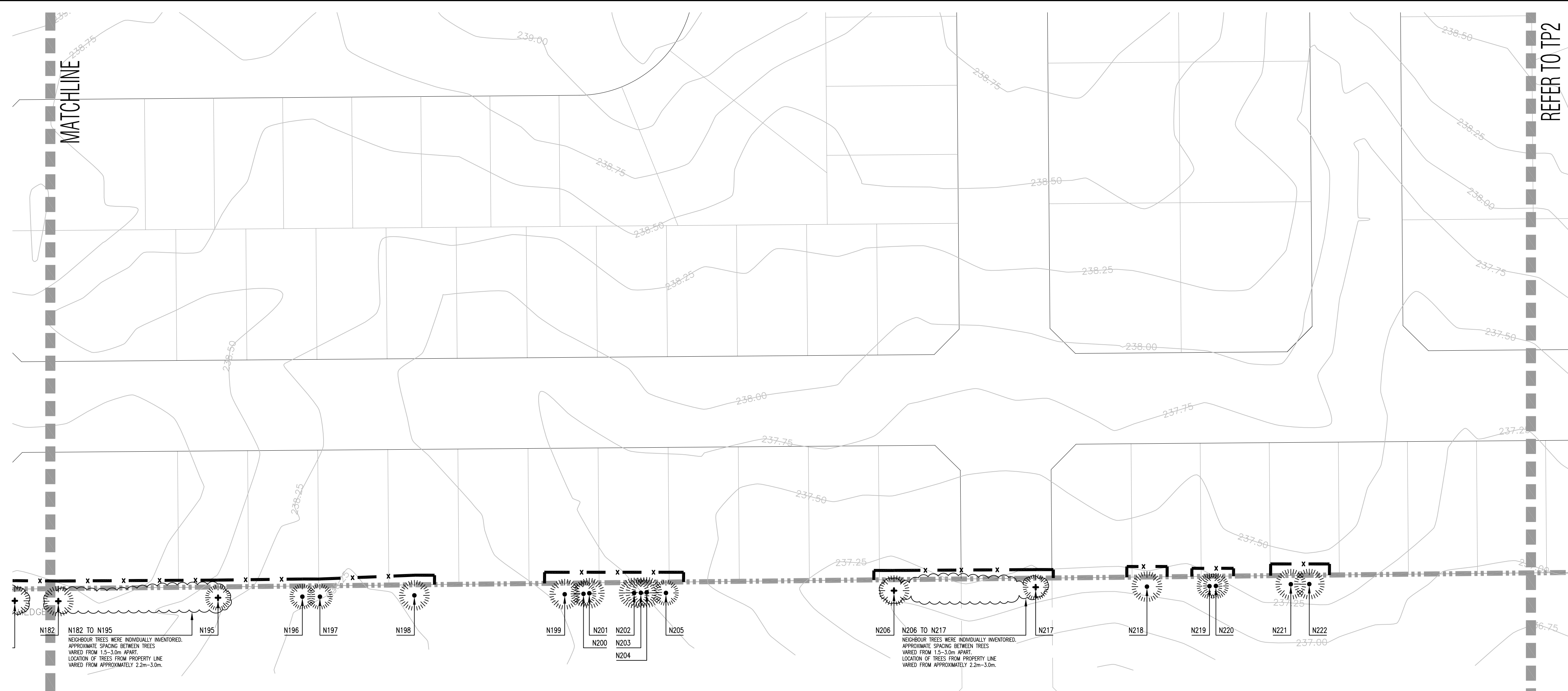


cosburn nauboris LTD 1 905 940 4443
landscape architects cosburnnauboris.ca

WILDFIELD VILLAGE - PARCELS 3, 4 & 5
TOWN OF CALEDON
REGION OF PEEL

TREE PRESERVATION PLAN

Drawn by	SW	Scale	1:500	TP1 Drawing No.
Checked by	GO	Plot Date	2025-01-27	
Approved by	HN	Project	2542	



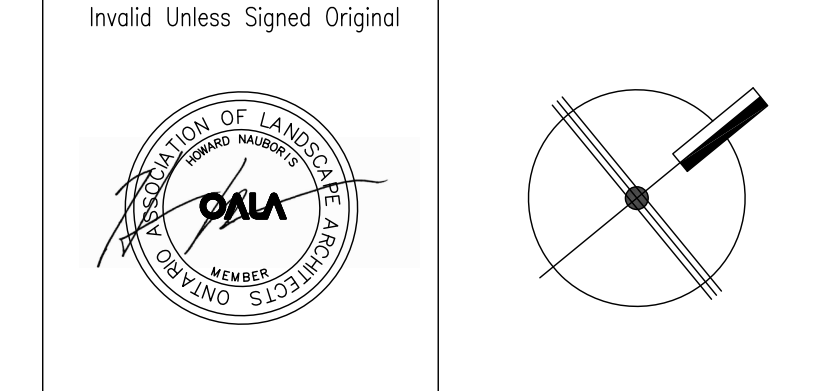
- LEGEND**
- PROPERTY LINE
 - x - x - TREE PROTECTION FENCE
 - TREE LOCATION DETERMINED BY SURVEY
 - + TREE LOCATION ESTIMATED
 - EXISTING DECIDUOUS TREE TO REMAIN
TREE PROTECTION ZONE (TPZ)
 - ⊗ EXISTING CONIFEROUS TREE TO REMAIN
TREE PROTECTION ZONE (TPZ)
 - ⊗ EXISTING DECIDUOUS TREE TO BE REMOVED
TREE PROTECTION ZONE (TPZ)
 - ⊗ EXISTING CONIFEROUS TREE TO BE REMOVED
TREE PROTECTION ZONE (TPZ)
 - ⊕ EXISTING VEGETATION GROUPING TO REMAIN
 - ⊕ EXISTING VEGETATION GROUPING TO BE REMOVED
(ONLY ON SUBJECT SITE)
- *REFER TO TP12 & TP13 FOR TREE INVENTORY LISTS*
REFER TO TP14 FOR TREE PRESERVATION DETAILS

Base Information

Lotting plan information received in digital format from Solmar and received January 15, 2025.
Survey information received in digital format from R-PE Surveying and received October 11, 2024.
Additional tree survey information received in digital format from R-PE Surveying and received January 13, 2025.

1	For Submission	SW	25	01	24	
No	Revision		By	Yr	Mo	Da

All drawings and designs are the property of Cosburn Nauboris Limited and may not be used or reproduced without permission. This drawing must not be scaled.



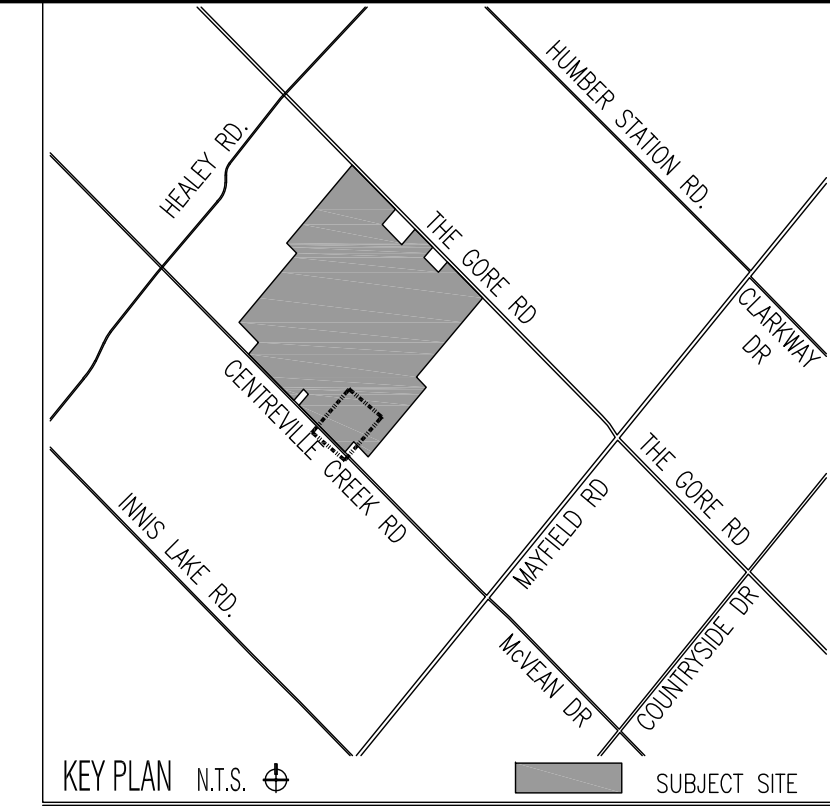
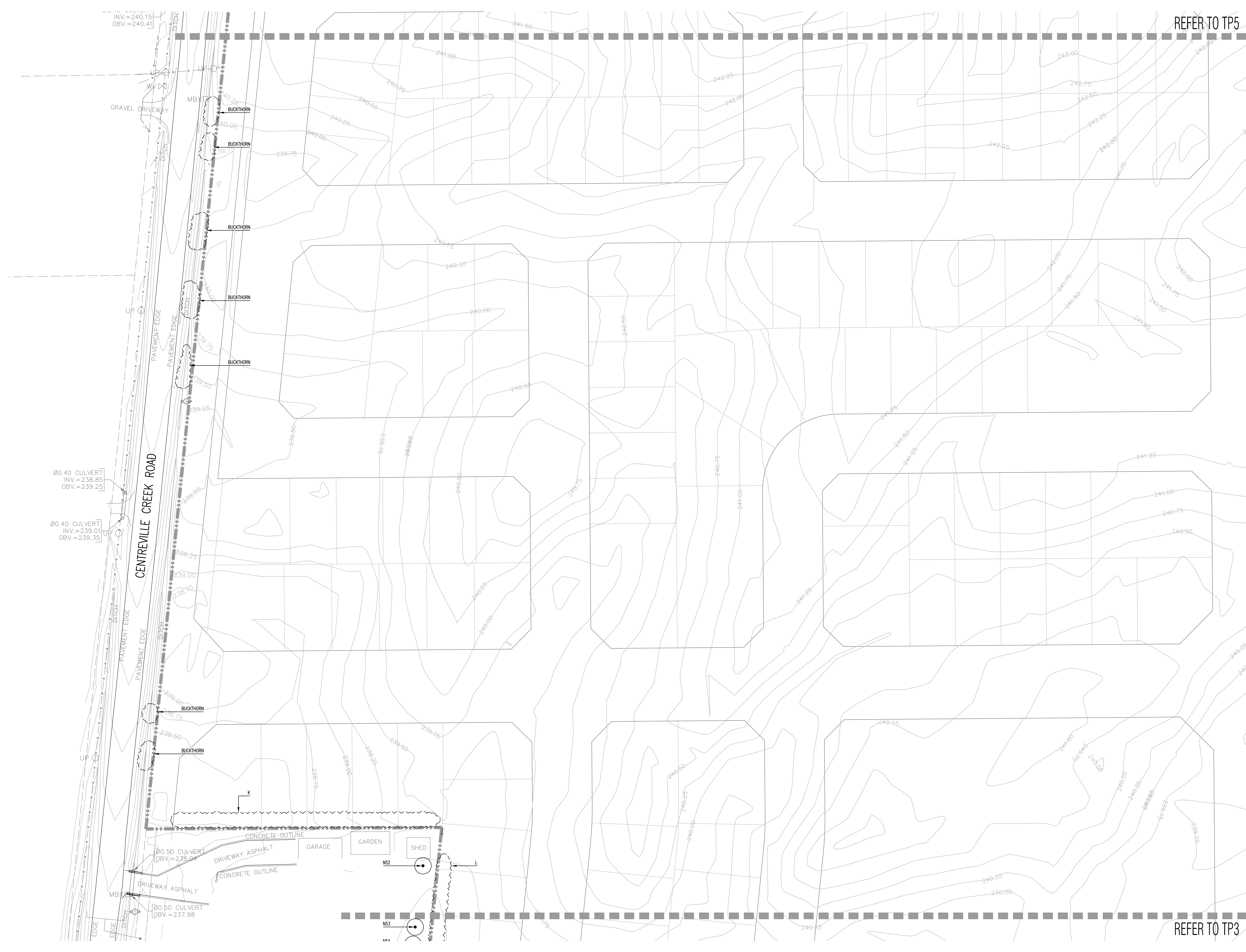
cosburn nauboris LTD 1 905 940 4443
landscape architects cosburnnauboris.ca

WILDFIELD VILLAGE - PARCELS 3, 4 & 5
TOWN OF CALEDON
REGION OF PEEL

TREE PRESERVATION PLAN

Drawn by	SW	Scale	1:500
Checked by	GO	Plot Date	2025-01-27
Approved by	HN	Project	2542

TP3
Drawing No.



- LEGEND**
- — — — — PROPERTY LINE
 - x - x - TREE PROTECTION FENCE
 - TREE LOCATION DETERMINED BY SURVEY
 - + TREE LOCATION ESTIMATED
 - EXISTING DECIDUOUS TREE TO REMAIN
TREE PROTECTION ZONE (TPZ)
 - ⊗ EXISTING CONIFEROUS TREE TO REMAIN
TREE PROTECTION ZONE (TPZ)
 - ⊗ EXISTING DECIDUOUS TREE TO BE REMOVED
TREE PROTECTION ZONE (TPZ)
 - ⊗ EXISTING CONIFEROUS TREE TO BE REMOVED
TREE PROTECTION ZONE (TPZ)
 - ⊞ EXISTING VEGETATION GROUPING TO REMAIN
 - ⊞ EXISTING VEGETATION GROUPING TO BE REMOVED
(ONLY ON SUBJECT SITE)
- *REFER TO TP12 & TP13 FOR TREE INVENTORY LISTS*
REFER TO TP14 FOR TREE PRESERVATION DETAILS

Base Information

Lotting plan information received in digital format from Solmar and received January 15, 2025.
Survey information received in digital format from R-PE Surveying and received October 11, 2024.
Additional tree survey information received in digital format from R-PE Surveying and received January 13, 2025.

1	For Submission	SW	25	01	24
No	Revision	By	Yr	Mo	Da

All drawings and designs are the property of Cosburn Nauboris Limited and may not be used or reproduced without permission. This drawing must not be scaled.

Invald Unless Signed Original

cosburn nauboris LTD 1 905 940 4443
landscape architects cosburnnauboris.ca

WILDFIELD VILLAGE - PARCELS 3, 4 & 5
TOWN OF CALEDON
REGION OF PEELE

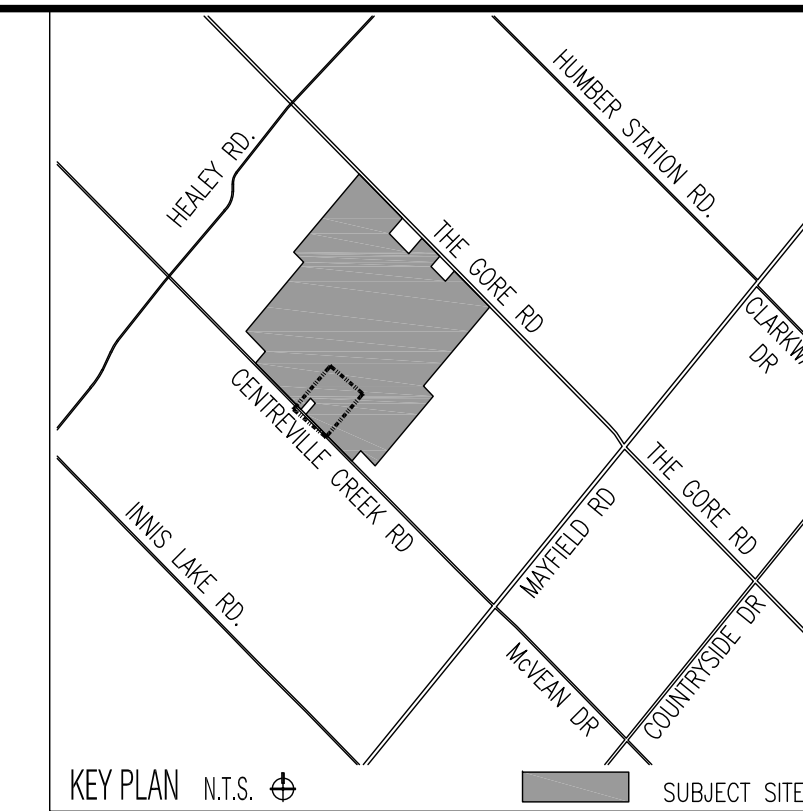
TREE PRESERVATION PLAN

Drawn by	SW	Scale	1:500
Checked by	GO	Plot Date	2025-01-27
Approved by	HN	Project	2542

TP4
Drawing No.

REFER TO TP6

REFER TO TP1



LEGEND

- PROPERTY LINE
- x - x - TREE PROTECTION FENCE
- TREE LOCATION DETERMINED BY SURVEY
- + TREE LOCATION ESTIMATED
- EXISTING DECIDUOUS TREE TO REMAIN
TREE PROTECTION ZONE (TPZ)
- ⊗ EXISTING CONIFEROUS TREE TO REMAIN
TREE PROTECTION ZONE (TPZ)
- ⊗ EXISTING DECIDUOUS TREE TO BE REMOVED
TREE PROTECTION ZONE (TPZ)
- ⊗ EXISTING CONIFEROUS TREE TO BE REMOVED
TREE PROTECTION ZONE (TPZ)
- EXISTING VEGETATION GROUPING TO REMAIN
- - - EXISTING VEGETATION GROUPING TO BE REMOVED
(ONLY ON SUBJECT SITE)

REFER TO TP12 & TP13 FOR TREE INVENTORY LISTS
 REFER TO TP14 FOR TREE PRESERVATION DETAILS

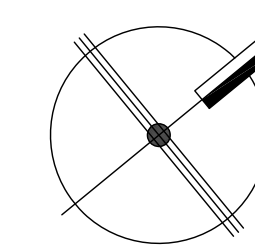
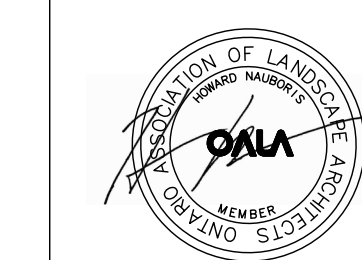
Base Information

Lotting plan information received in digital format from Solmar and received January 15, 2025.
 Survey information received in digital format from R-PE Surveying and received October 11, 2024.
 Additional tree survey information received in digital format from R-PE Surveying and received January 13, 2025.

1	For Submission	SW	25 01 24
No	Revision		By Yr Mo Da

All drawings and designs are the property of Cosburn Nauboris Limited and may not be used or reproduced without permission. This drawing must not be scaled.

Invalid Unless Signed Original



cosburn nauboris LTD 1 905 940 4443
 landscape architects cosburnnauboris.ca

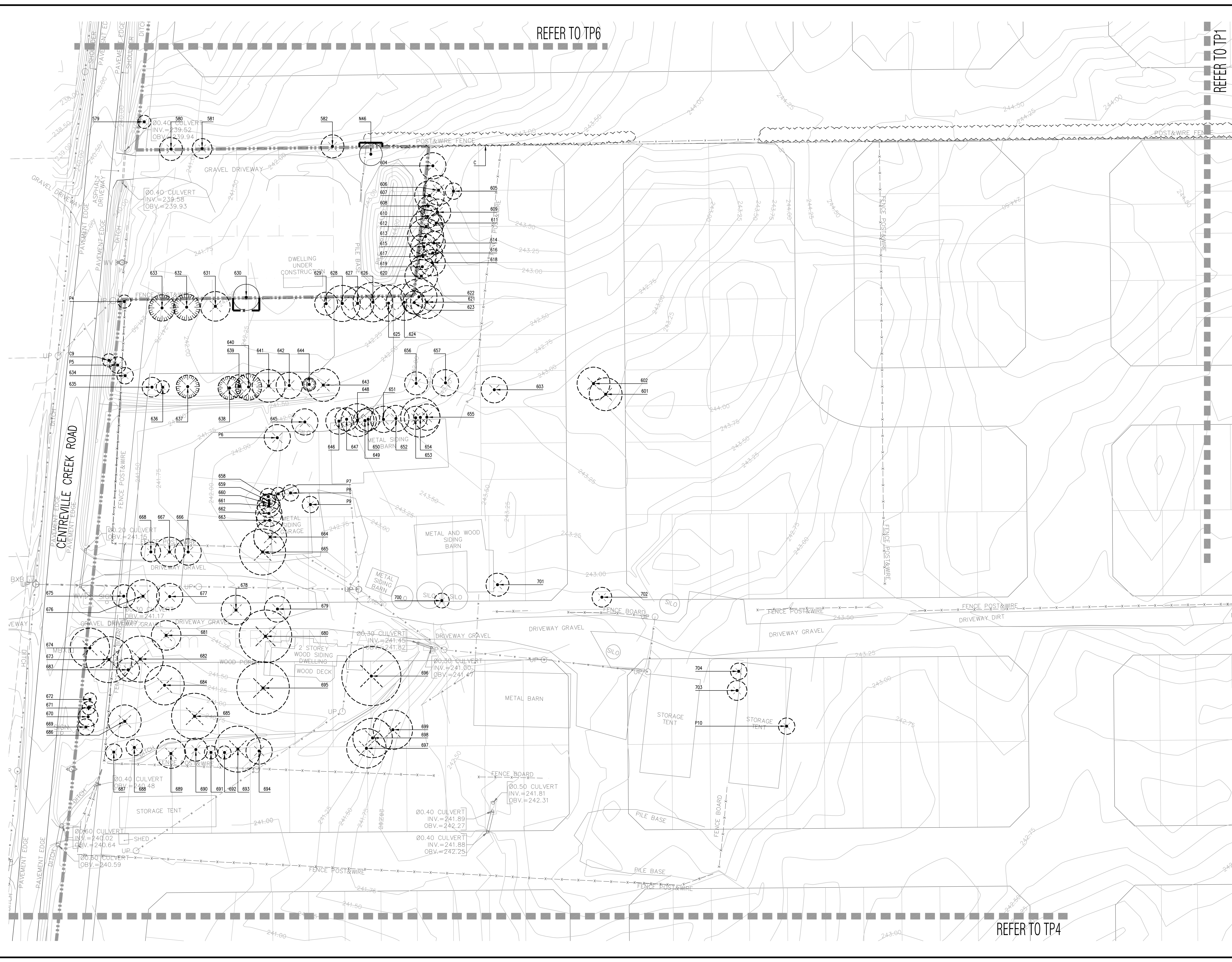
WILDFIELD VILLAGE - PARCELS 3, 4 & 5
 TOWN OF CALEDON
 REGION OF PEELE

TREE PRESERVATION PLAN

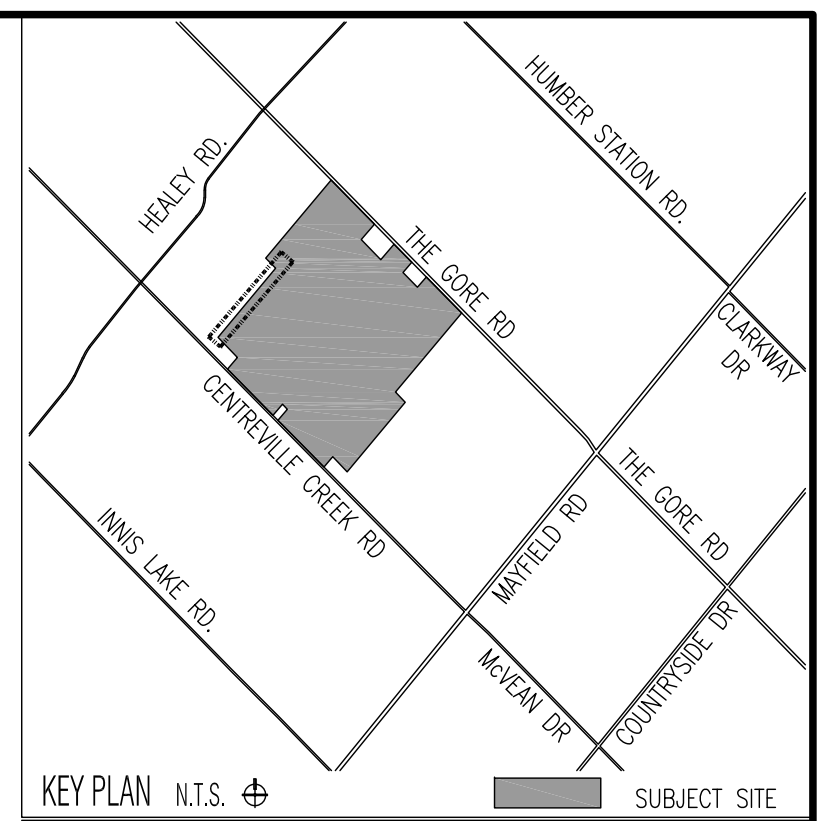
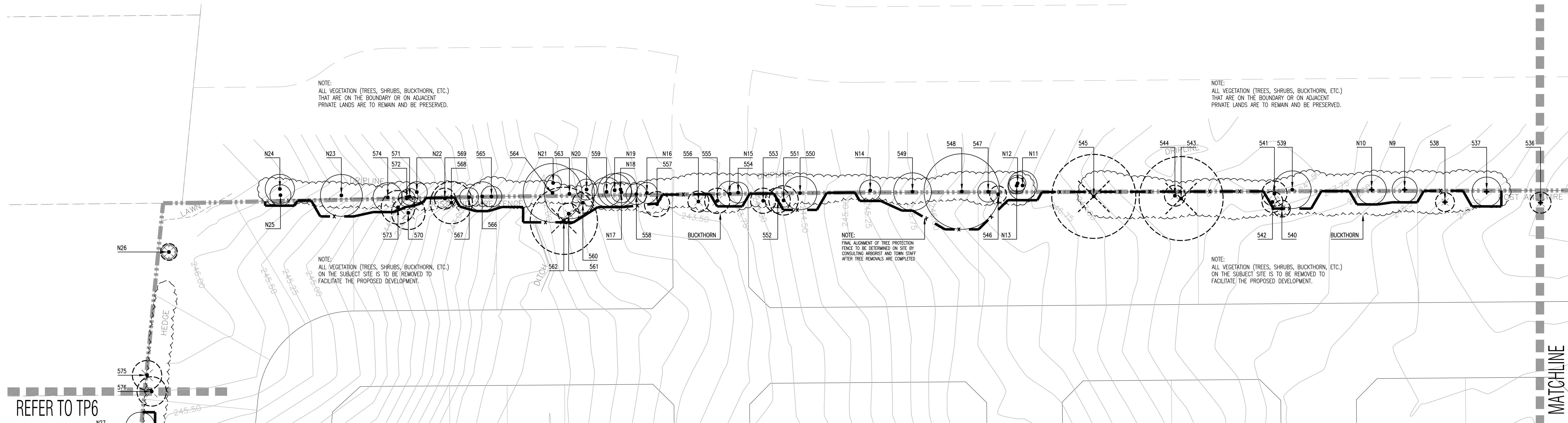
Drawn by	SW	Scale	1:500
Checked by	GO	Plot Date	2025-01-27
Approved by	HN	Project	2542

TP5

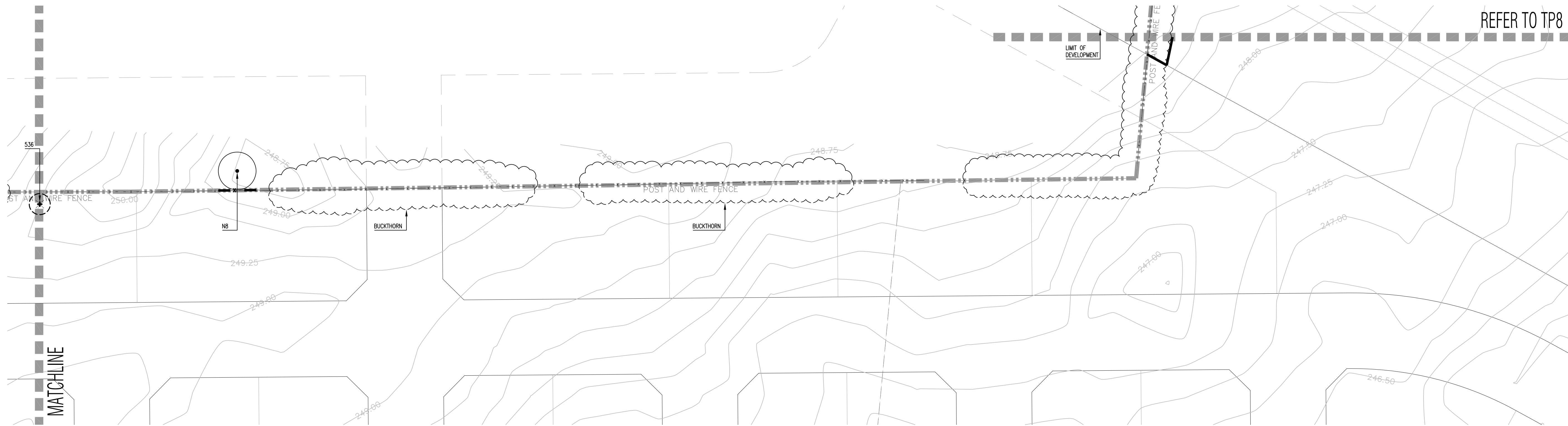
Drawing No.



REFER TO TP4



- LEGEND**
- PROPERTY LINE
 - x - x - TREE PROTECTION FENCE
 - TREE LOCATION DETERMINED BY SURVEY
 - + TREE LOCATION ESTIMATED
 - EXISTING DECIDUOUS TREE TO REMAIN
TREE PROTECTION ZONE (TPZ)
 - ⊙ EXISTING CONIFEROUS TREE TO REMAIN
TREE PROTECTION ZONE (TPZ)
 - ⊗ EXISTING DECIDUOUS TREE TO BE REMOVED
TREE PROTECTION ZONE (TPZ)
 - ⊙⊗ EXISTING CONIFEROUS TREE TO BE REMOVED
TREE PROTECTION ZONE (TPZ)
 - ⊕ EXISTING VEGETATION GROUPING TO REMAIN
 - ⊕ EXISTING VEGETATION GROUPING TO BE REMOVED
(ONLY ON SUBJECT SITE)
- *REFER TO TP12 & TP13 FOR TREE INVENTORY LISTS*
REFER TO TP14 FOR TREE PRESERVATION DETAILS

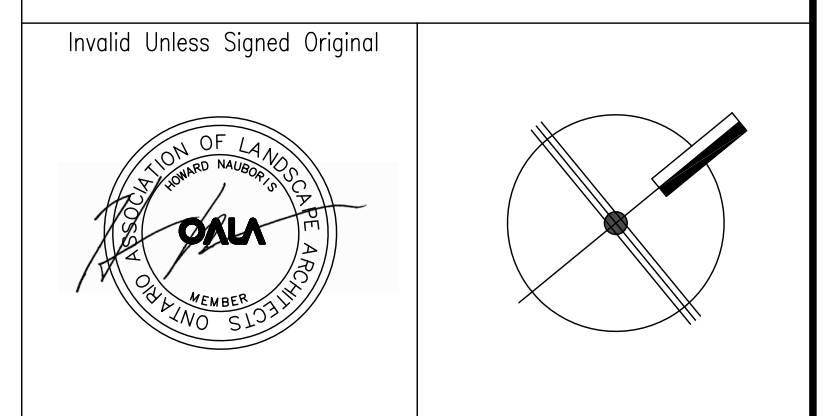


Base Information

Lotting plan information received in digital format from Solmar and received January 15, 2025.
Survey information received in digital format from R-PE Surveying and received October 11, 2024.
Additional tree survey information received in digital format from R-PE Surveying and received January 13, 2025.

1	For Submission	SW	25	01	24	
No	Revision		By	Yr	Mo	Da

All drawings and designs are the property of Cosburn Nauboris Limited and may not be used or reproduced without permission. This drawing must not be scaled.



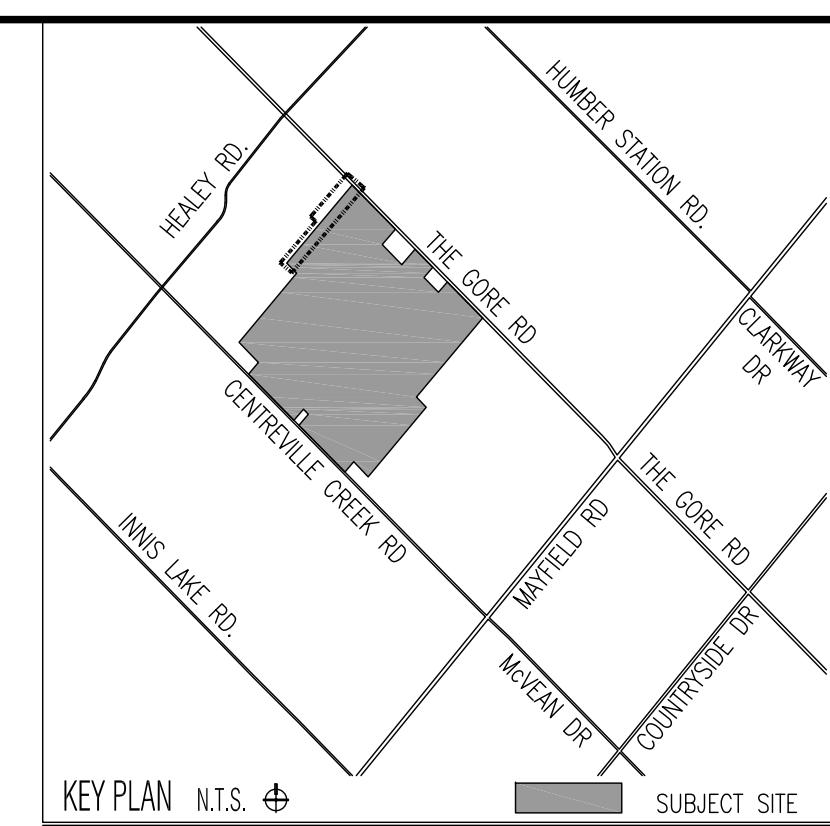
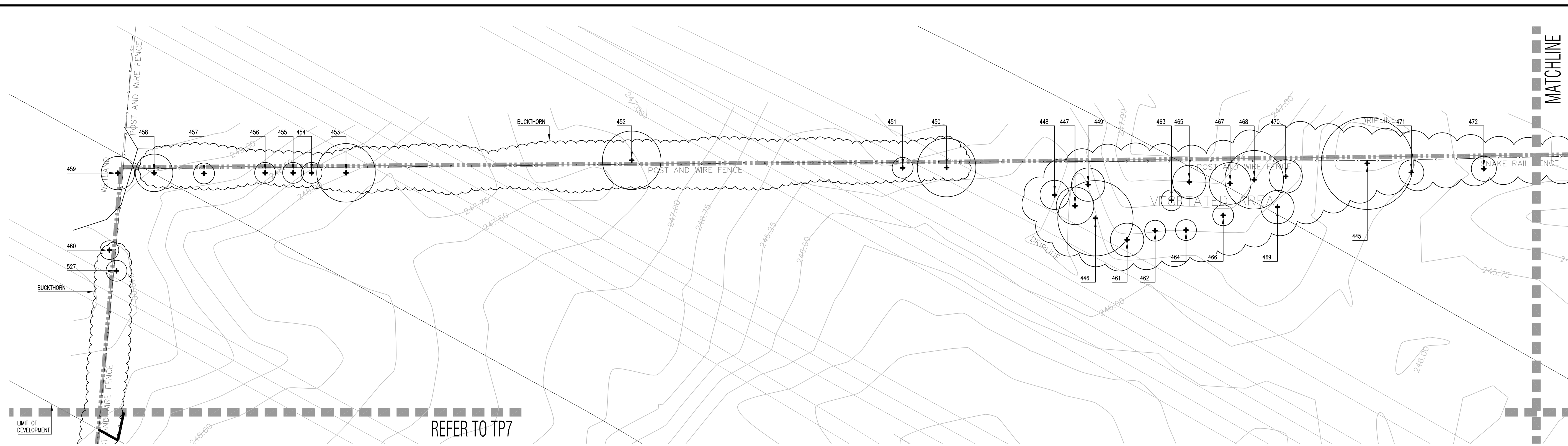
cosburn nauboris LTD 1 905 940 4443
landscape architects cosburnnauboris.ca

WILDFIELD VILLAGE - PARCELS 3, 4 & 5
TOWN OF CALEDON
REGION OF PEELE

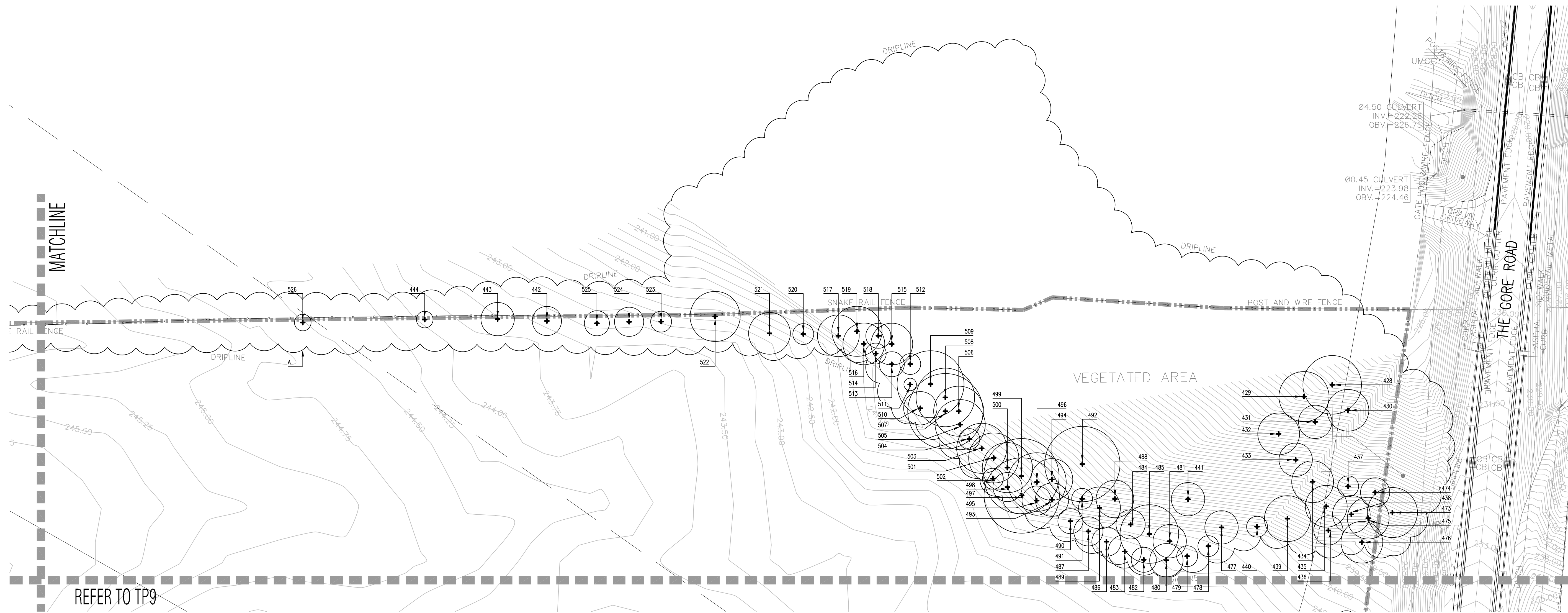
TREE PRESERVATION PLAN

Drawn by	SW	Scale	1:500
Checked by	GO	Plot Date	2025-01-27
Approved by	HN	Project	2542

TP7
Drawing No.



- LEGEND**
- PROPERTY LINE
 - x - x - TREE PROTECTION FENCE
 - TREE LOCATION DETERMINED BY SURVEY
 - + TREE LOCATION ESTIMATED
 - EXISTING DECIDUOUS TREE TO REMAIN
TREE PROTECTION ZONE (TPZ)
 - ⊗ EXISTING CONIFEROUS TREE TO REMAIN
TREE PROTECTION ZONE (TPZ)
 - ⊗ EXISTING DECIDUOUS TREE TO BE REMOVED
TREE PROTECTION ZONE (TPZ)
 - ⊗ EXISTING CONIFEROUS TREE TO BE REMOVED
TREE PROTECTION ZONE (TPZ)
 - ⊕ EXISTING VEGETATION GROUPING TO REMAIN
(ONLY ON SUBJECT SITE)
 - ⊕ EXISTING VEGETATION GROUPING TO BE REMOVED
(ONLY ON SUBJECT SITE)
- *REFER TO TP12 & TP13 FOR TREE INVENTORY LISTS*
REFER TO TP14 FOR TREE PRESERVATION DETAILS

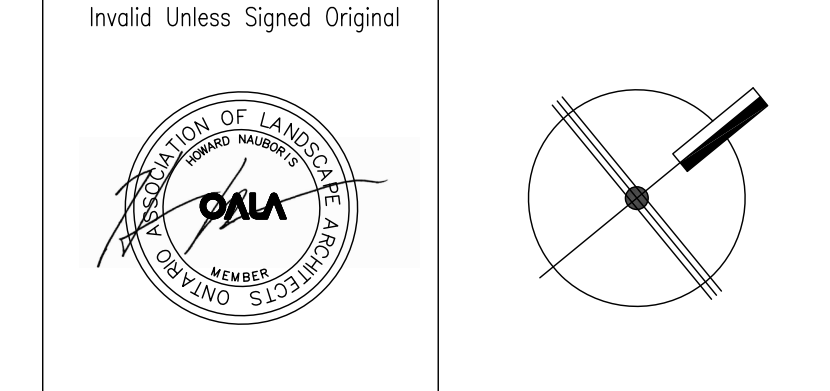


Base Information

Lotting plan information received in digital format from Solmar and received January 15, 2025.
Survey information received in digital format from R-PE Surveying and received October 11, 2024.
Additional tree survey information received in digital format from R-PE Surveying and received January 13, 2025.

No	Revision	By	Yr	Mo	Da
1	For Submission	SW	25	01	24

All drawings and designs are the property of Cosburn Naboris Limited and may not be used or reproduced without permission. This drawing must not be scaled.



cosburn naboris LTD 1 905 940 4443
landscape architects cosburnnaboris.ca

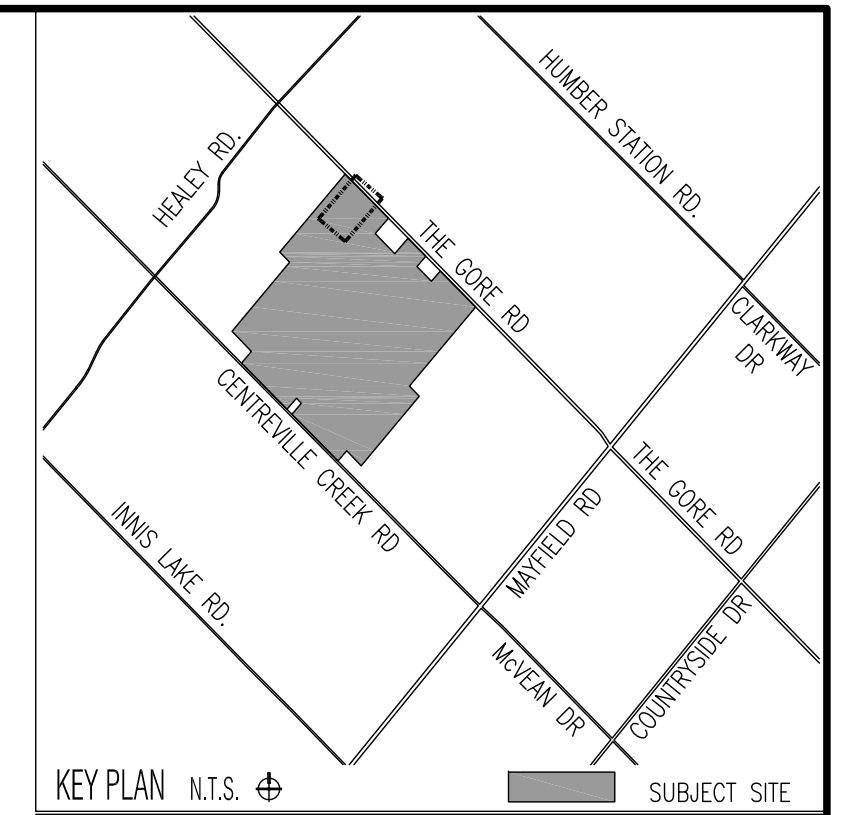
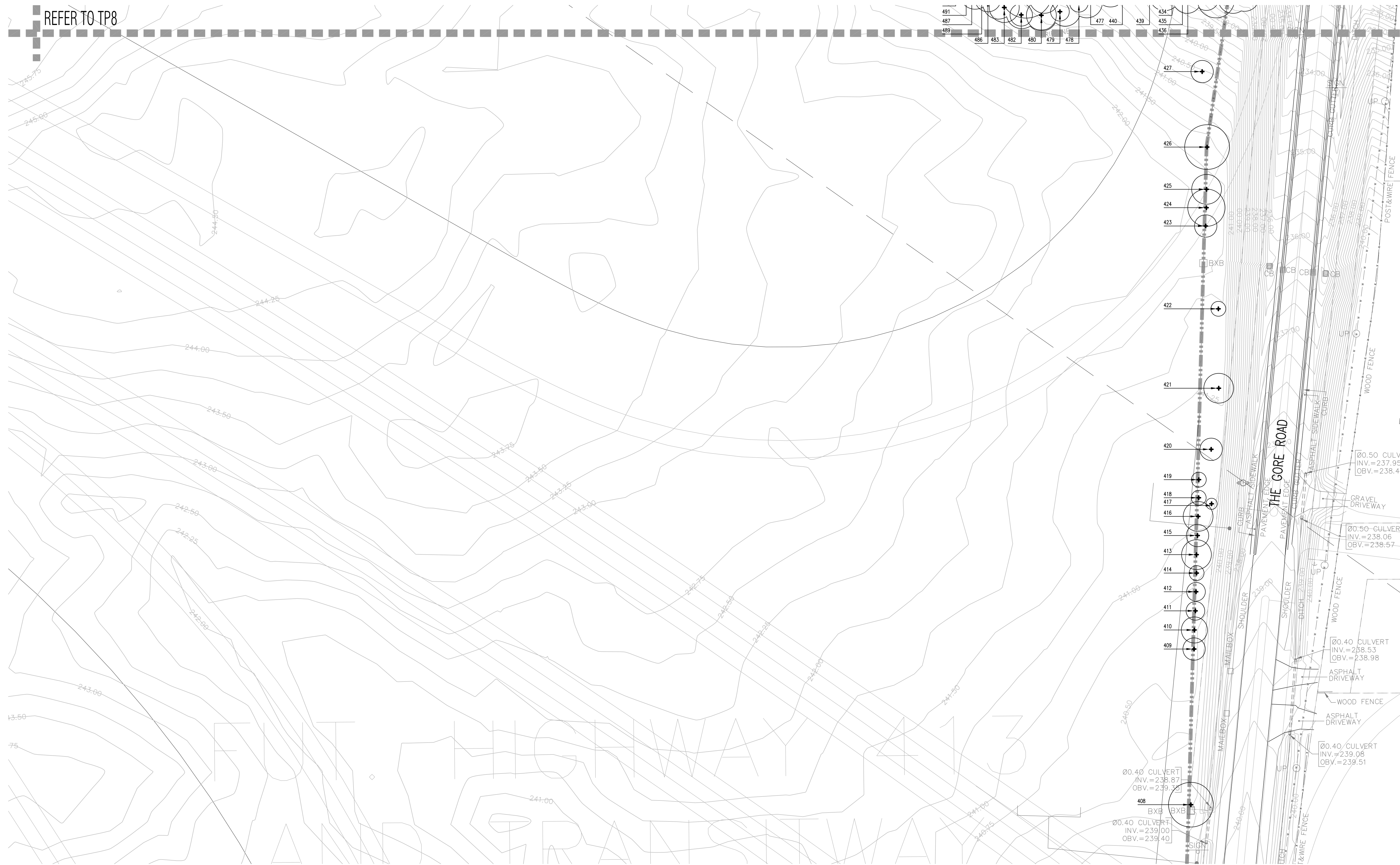
WILDFIELD VILLAGE - PARCELS 3, 4 & 5
TOWN OF CALEDON
REGION OF PEEL

TREE PRESERVATION PLAN

Drawn by SW Scale 1:500
Checked by GO Plot Date 2025-01-27
Approved by HN Project 2542

TP8
Drawing No.

REFER TO TP8



LEGEND

- PROPERTY LINE
- x - x - TREE PROTECTION FENCE
- TREE LOCATION DETERMINED BY SURVEY
- + TREE LOCATION ESTIMATED
- EXISTING DECIDUOUS TREE TO REMAIN
TREE PROTECTION ZONE (TPZ)
- ⊗ EXISTING CONIFEROUS TREE TO REMAIN
TREE PROTECTION ZONE (TPZ)
- ⊗ EXISTING DECIDUOUS TREE TO BE REMOVED
TREE PROTECTION ZONE (TPZ)
- ⊗ EXISTING CONIFEROUS TREE TO BE REMOVED
TREE PROTECTION ZONE (TPZ)
- EXISTING VEGETATION GROUPING TO REMAIN
- EXISTING VEGETATION GROUPING TO BE REMOVED
(ONLY ON SUBJECT SITE)

REFER TO TP12 & TP13 FOR TREE INVENTORY LISTS
REFER TO TP14 FOR TREE PRESERVATION DETAILS

Base Information

Lotting plan information received in digital format from Solmar and received January 15, 2025.
Survey information received in digital format from R-PE Surveying and received October 11, 2024.
Additional tree survey information received in digital format from R-PE Surveying and received January 13, 2025.

1	For Submission	SW	25	01	24
No	Revision		By	Yr	Mo

All drawings and designs are the property of Cosburn Nauboris Limited and may not be used or reproduced without permission. This drawing must not be scaled.

Invalid Unless Signed Original

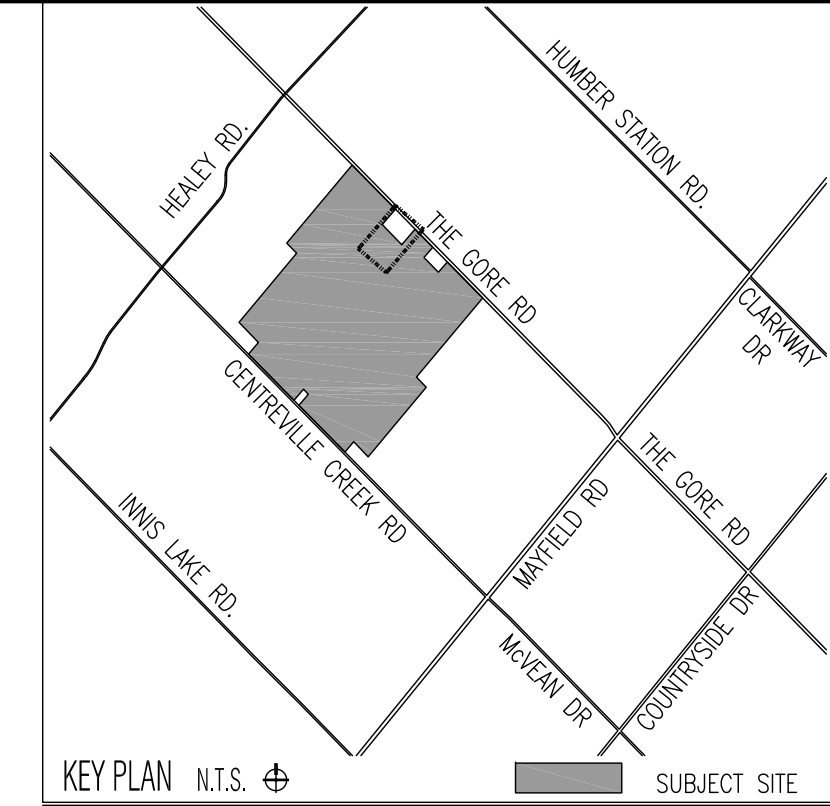
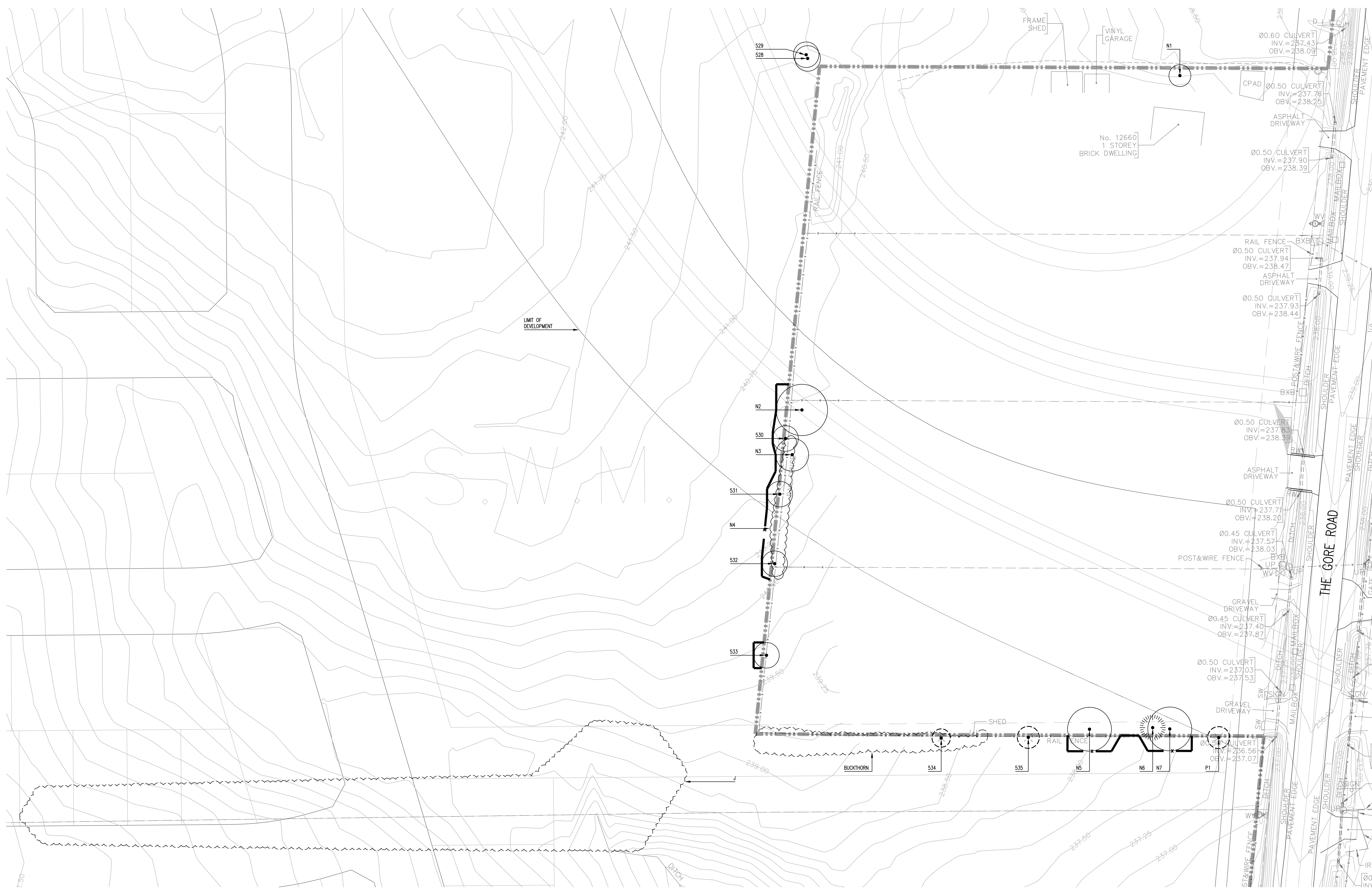
cosburn nauboris LTD 1 905 940 4443
landscape architects cosburnnauboris.ca

WILDFIELD VILLAGE - PARCELS 3, 4 & 5
TOWN OF CALEDON
REGION OF PEEL

TREE PRESERVATION PLAN

Drawn by	SW	Scale	1:500
Checked by	GO	Plot Date	2025-01-27
Approved by	HN	Project	2542

TP9
Drawing No.



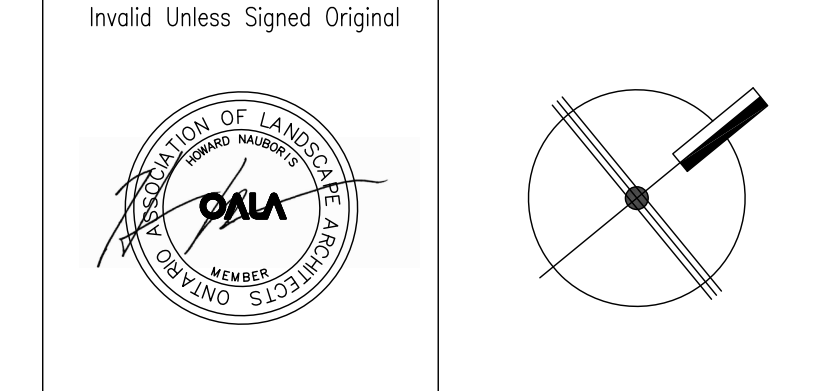
- LEGEND**
- PROPERTY LINE
 - x-x- TREE PROTECTION FENCE
 - TREE LOCATION DETERMINED BY SURVEY
 - + TREE LOCATION ESTIMATED
 - EXISTING DECIDUOUS TREE TO REMAIN (TREE PROTECTION ZONE (TPZ))
 - ⊗ EXISTING CONIFEROUS TREE TO REMAIN (TREE PROTECTION ZONE (TPZ))
 - ⊗ EXISTING DECIDUOUS TREE TO BE REMOVED (TREE PROTECTION ZONE (TPZ))
 - ⊗ EXISTING CONIFEROUS TREE TO BE REMOVED (TREE PROTECTION ZONE (TPZ))
 - ⊞ EXISTING VEGETATION GROUPING TO REMAIN (ONLY ON SUBJECT SITE)
 - ⊞ EXISTING VEGETATION GROUPING TO BE REMOVED (ONLY ON SUBJECT SITE)
- *REFER TO TP12 & TP13 FOR TREE INVENTORY LISTS*
 REFER TO TP14 FOR TREE PRESERVATION DETAILS

Base Information

Lotting plan information received in digital format from Solmar and received January 15, 2025.
 Survey information received in digital format from R-PE Surveying and received October 11, 2024.
 Additional tree survey information received in digital format from R-PE Surveying and received January 13, 2025.

1	For Submission	SW	25	01	24	
No	Revision		By	Yr	Mo	Da

All drawings and designs are the property of Cosburn Naboris Limited and may not be used or reproduced without permission. This drawing must not be scaled.



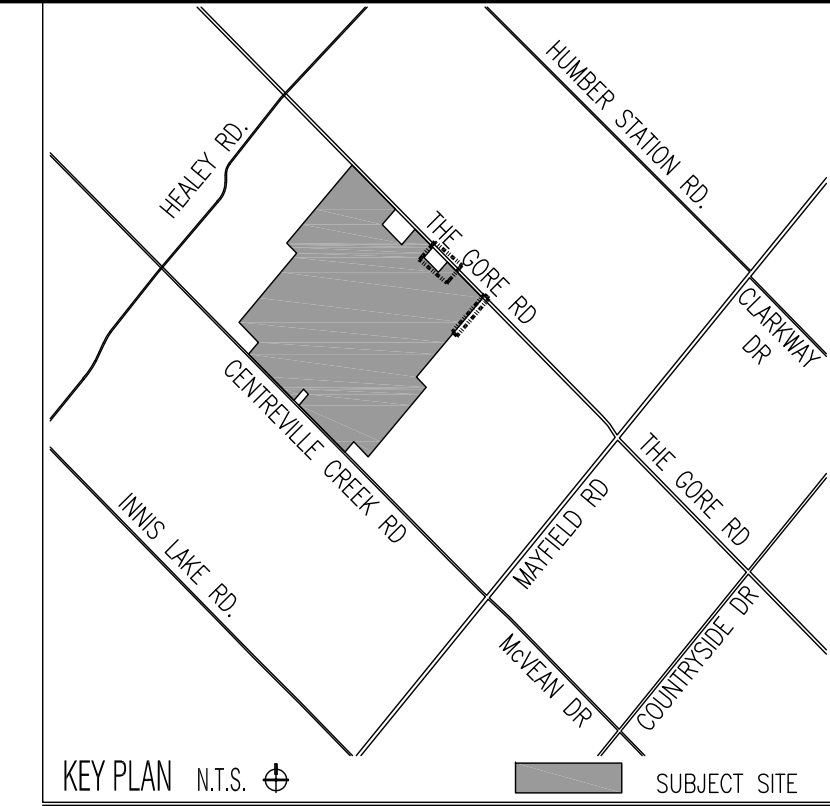
cosburn naboris LTD 1 905 940 4443
 landscape architects cosburnnaboris.ca

WILDFIELD VILLAGE - PARCELS 3, 4 & 5
 TOWN OF CALEDON
 REGION OF PEELE

TREE PRESERVATION PLAN

Drawn by	SW	Scale	1:500
Checked by	GO	Plot Date	2025-01-27
Approved by	HN	Project	2542

TP10
Drawing No.



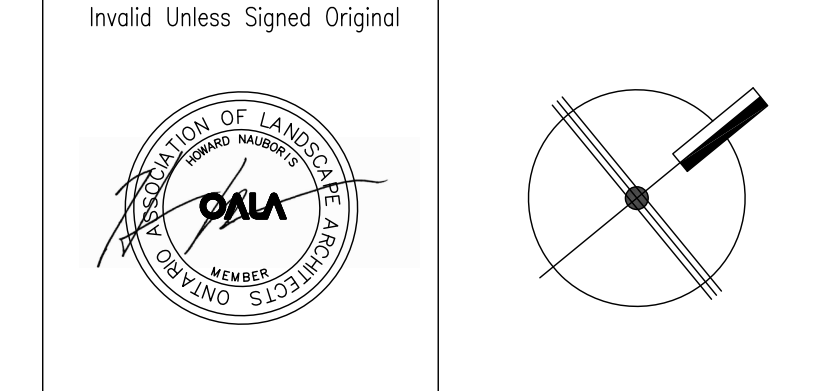
- LEGEND**
- — — — — PROPERTY LINE
 - x - x - x - TREE PROTECTION FENCE
 - TREE LOCATION DETERMINED BY SURVEY
 - + TREE LOCATION ESTIMATED
 - EXISTING DECIDUOUS TREE TO REMAIN
TREE PROTECTION ZONE (TPZ)
 - ⊗ EXISTING CONIFEROUS TREE TO REMAIN
TREE PROTECTION ZONE (TPZ)
 - ⊗ EXISTING DECIDUOUS TREE TO BE REMOVED
TREE PROTECTION ZONE (TPZ)
 - ⊗ EXISTING CONIFEROUS TREE TO BE REMOVED
TREE PROTECTION ZONE (TPZ)
 - ⊗ EXISTING VEGETATION GROUPING TO REMAIN
(ONLY ON SUBJECT SITE)
 - ⊗ EXISTING VEGETATION GROUPING TO BE REMOVED
(ONLY ON SUBJECT SITE)
- *REFER TO TP12 & TP13 FOR TREE INVENTORY LISTS*
REFER TO TP14 FOR TREE PRESERVATION DETAILS

Base Information

Lotting plan information received in digital format from Solmar and received January 15, 2025.
Survey information received in digital format from R-PE Surveying and received October 11, 2024.
Additional tree survey information received in digital format from R-PE Surveying and received January 13, 2025.

1	For Submission	SW	25	01	24
No	Revision	By	Yr	Mo	Da

All drawings and designs are the property of Cosburn Nauboris Limited and may not be used or reproduced without permission. This drawing must not be scaled.



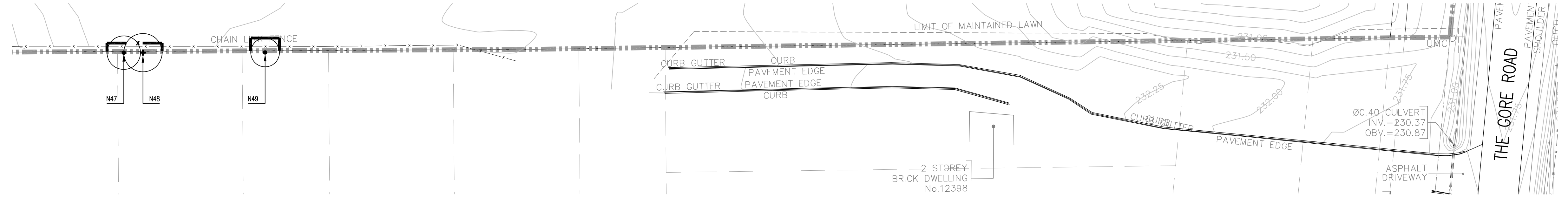
cosburn nauboris LTD 1 905 940 4443
landscape architects cosburnnauboris.ca

WILDFIELD VILLAGE - PARCELS 3, 4 & 5
TOWN OF CALEDON
REGION OF PEEL

TREE PRESERVATION PLAN

Drawn by SW Scale 1:500
Checked by GO Plot Date 2025-01-27
Approved by HN Project 2542

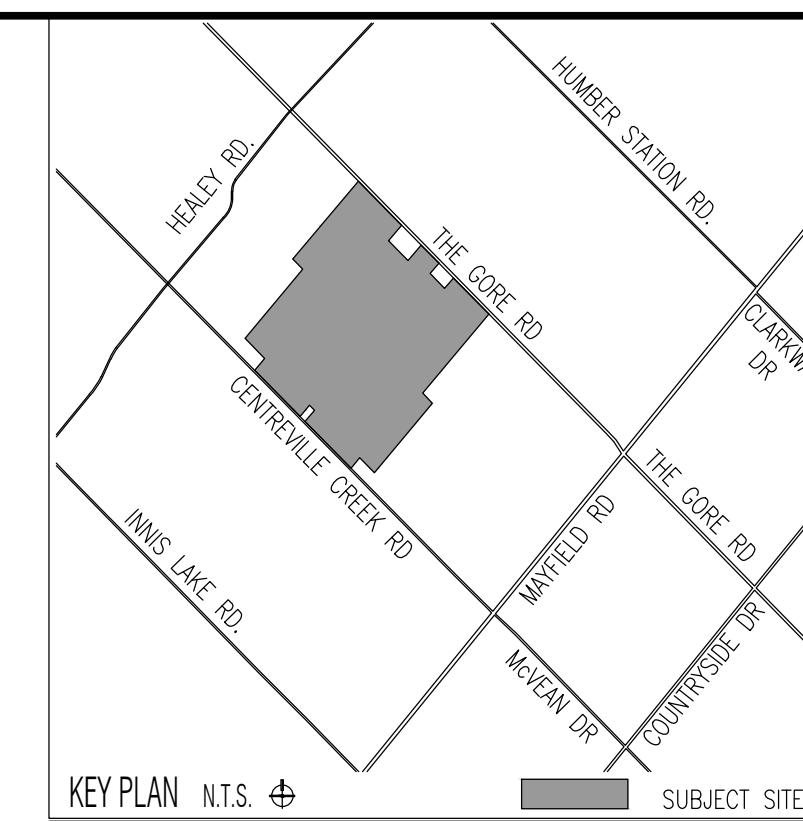
TP11
Drawing No.



Tree #	Zone 17 T	NAD 83 UTM East m. (Poor or trees only)	UTM North m. (Poor or trees only)	Wildfield Village Project #: 2542 2024-11-07/08/13/20/22	Individual Tree Inventory Common Name	DBH cm	Crown spread m. dia.	Overall Condition (Structure & Health)	December 2, 2024 Comment	Caledon Action	Rationale	Caledon TPZ m. radius (d + 1m)
427					<i>Acer negundo</i>	16	4	Fair	codom incl bark union @ 0.4m	Preserve		3
428	600555	4854343			<i>Fraxinus pennsylvanica</i>	60	12	Poor	EAB	Preserve		7
429	600550	4854369			<i>Fraxinus pennsylvanica</i>	40	10	Poor	EAB, internal decay	Preserve		4
430	600555	4854370			<i>Fraxinus pennsylvanica</i>	30	8	Poor	EAB	Preserve		5
431	600551	4854364			<i>Fraxinus pennsylvanica</i>	29	6	Poor	EAB	Preserve		4
432	600545	4854354			<i>Fraxinus pennsylvanica</i>	24	8	Poor	EAB	Preserve		5
433	600551	4854356			<i>Fraxinus pennsylvanica</i>	20	6	Poor	EAB	Preserve		4
434	600555	4854355			<i>Fraxinus pennsylvanica</i>	31	8	Poor	EAB, bark splitting	Preserve		5
435	600554	4854354			<i>Fraxinus pennsylvanica</i>	17	8	Poor	EAB, 2-stem @ grade	Preserve		5
436	600556	4854353			<i>Fraxinus pennsylvanica</i>	15	5	Poor	EAB	Preserve		3.5
437	600556	4854355			<i>Fraxinus pennsylvanica</i>	15	3	Poor	EAB	Preserve		2.5
438	600557	4854355			<i>Fraxinus pennsylvanica</i>	25	7	Poor	EAB	Preserve		4.5
439	600553	4854346			<i>Fraxinus pennsylvanica</i>	32	9	Poor	EAB	Preserve		5.5
440	600548	4854339			<i>Fraxinus pennsylvanica</i>	15	3	Poor	EAB	Preserve		2.5
441	600520	4854315			<i>Fraxinus pennsylvanica</i>	16	6	Poor	EAB	Preserve		4
442					<i>Ulmus americana</i>	17	5	Good		Preserve		2.5
443					<i>Ulmus americana</i>	17	6	Good	boundary tree	Preserve		4
444	600375	4854204			<i>Fraxinus pennsylvanica</i>	33	2	Dead	boundary tree, EAB, 2-stem union	Preserve		2
445	600292	4854089			<i>Salix sp.</i>	81	20	Poor	0-stems, 1-stem failed/split, breakage	Preserve		11
446					<i>Acer rubrum</i>	52	16	Good	multi-stem clump	Preserve		9
447					<i>Acer rubrum</i>	32	7	Good	multi-stem clump	Preserve		4.5
448					<i>Acer rubrum</i>	28	5	Fair	2-stem fused	Preserve		3.5
449					<i>Acer rubrum</i>	28	6	Good	2-stem	Preserve		4
450					<i>Ulmus americana</i>	45	12	Fair		Preserve		7
451					<i>Morus sp.</i>	14	3	Fair		Preserve		2.5
453	600166	4853925			<i>Ulmus americana</i>	48	12	Poor	multi-stem union @ 0.5m	Preserve		2.5
454	600159	4853925			<i>Ulmus americana</i>	14	3	Poor	EAB	Preserve		2.5
455	600158	4853924			<i>Fraxinus pennsylvanica</i>	15	3	Poor	EAB, suckering, upper stem failure	Preserve		2.5
456	600152	4853919			<i>Fraxinus pennsylvanica</i>	13	3	Poor	EAB, 90% dieback	Preserve		2.5
457	600127	4853887			<i>Fraxinus pennsylvanica</i>	15	3	Poor	EAB, 90% dieback, 2-stem	Preserve		2.5
458					<i>Ulmus americana</i>	19	7	Good		Preserve		4.5
461					<i>Acer negundo</i>	18	6	Good	multi-stem clump	Preserve		4
462					<i>Acer rubrum</i>	13	3	Good	2-stem @ grade	Preserve		2.5
463					<i>Acer rubrum</i>	13	3	Good	multi-stem clump	Preserve		2.5
464					<i>Acer rubrum</i>	12	3	Good		Preserve		2.5
465	600278	4854057			<i>Morus sp.</i>	40	6	Poor	extensive stem rot	Preserve		4
466					<i>Ulmus americana</i>	14	3	Good		Preserve		2.5
467					<i>Acer saccharinum</i>	37	8	Fair		Preserve		5
468					<i>Acer saccharinum</i>	40	12	Fair	multi-stem clump, stems fused	Preserve		7
469					<i>Acer negundo</i>	18	6	Fair	suckering	Preserve		4
470					<i>Acer saccharinum</i>	21	6	Good	multi-stem clump	Preserve		4
471					<i>Ulmus americana</i>	15	4	Fair		Preserve		3
472					<i>Acer negundo</i>	22	4	Fair	multi-stem clump	Preserve		3
474					<i>Acer negundo</i>	26	5	Fair		Preserve		3.5
475					<i>Acer negundo</i>	30	8	Fair		Preserve		5
476					<i>Acer negundo</i>	23	8	Fair	lean to south	Preserve		4
477					<i>Acer saccharum</i>	6	6	Good	Sugar Maple	Preserve		4
478					<i>Acer negundo</i>	14	3	Fair		Preserve		2.5
479					<i>Acer negundo</i>	19	3	Fair		Preserve		2.5
480					<i>Acer negundo</i>	18	6	Fair		Preserve		4
481	600538	4854324			<i>Acer negundo</i>	27	6	Poor	2m long trunk crack	Preserve		4
482					<i>Acer negundo</i>	12	4	Fair		Preserve		4
483					<i>Acer negundo</i>	18	6	Fair	lean to south	Preserve		4
484					<i>Acer negundo</i>	19	5	Fair	lean to south	Preserve		3.5
485	600532	4854316			<i>Acer negundo</i>	55	12	Poor	1-stem (1 failed), lean to south	Preserve		7
486					<i>Acer negundo</i>	12	5	Fair	lean to south	Preserve		2.5
487					<i>Acer negundo</i>	15	5	Fair		Preserve		3.5
488	600330	4854305			<i>Acer negundo</i>	22	7	Poor	conk on stem base/rot, lean to S	Preserve		4.5
489	600530	4854304			<i>Acer negundo</i>	36	8	Poor	stem rot/failure, horizontal	Preserve		5
490					<i>Acer negundo</i>	14	4	Fair		Preserve		3
491	600524	4854311			<i>Acer negundo</i>	19	3	Poor	stem rot	Preserve		2.5
492	600519	4854311			<i>Acer negundo</i>	64	16	Poor	3-stem (1 failed to south), decay	Preserve		9
493					<i>Acer negundo</i>	26	6	Fair	2-stem @ 0.2m, lean to S	Preserve		4
494					<i>Acer negundo</i>	39	8	Fair	2-stem @ 0.3m, lean to S	Preserve		5
495					<i>Acer negundo</i>	11	5	Fair	lean to south, horizontal	Preserve		3.5
496					<i>Acer negundo</i>	48	12	Fair	3-stem @ 0.4m	Preserve		7
497					<i>Acer negundo</i>	59	16	Fair	codom stems @ 1.5m, stem rot	Preserve		9
498					<i>Acer negundo</i>	11	5	Fair	lean to south	Preserve		3.5
499					<i>Acer negundo</i>	46	16	Fair	2-stem @ grade, lean to S	Preserve		9
500	600492	4854300			<i>Acer negundo</i>	27	10	Poor	2-stem @ 0.3m, stem decay/failure	Preserve		4
501					<i>Acer negundo</i>	30	10	Fair	lean to south	Preserve		5
502	600492	4854293			<i>Fraxinus pennsylvanica</i>	14	3	Poor	EAB, 90% dieback	Preserve		2.5
503					<i>Acer negundo</i>	23	10	Fair	lean to south	Preserve		4
504					<i>Ulmus americana</i>	11	3	Fair		Preserve		2.5
505					<i>Acer negundo</i>	22	10	Fair	lean to south	Preserve		4
506					<i>Ulmus americana</i>	39	10	Good		Preserve		6
507					<i>Acer negundo</i>	46	16	Fair	upper canopy failure	Preserve		9
508					<i>Acer negundo</i>	40	12	Fair	upper canopy failure	Preserve		6
509	600464	4854291			<i>Acer negundo</i>	38	14	Poor	conks on main stem, internal decay	Preserve		8
510					<i>Acer negundo</i>	13	6	Fair	lean to south	Preserve		4
511					<i>Acer negundo</i>	10	3	Fair	lean to south, fused w/ #510	Preserve		1.5
512					<i>Acer negundo</i>	11	3	Fair		Preserve		2.5
513					<i>Acer negundo</i>	13	4	Fair		Preserve		3
514					<i>Acer negundo</i>	12	3	Fair		Preserve		2.5
515					<i>Acer negundo</i>	23	8	Fair	50% dieback	Preserve		5
516					<i>Acer negundo</i>	20	8	Fair	lean to south	Preserve		4
517					<i>Acer negundo</i>	26	8	Fair	lean to south	Preserve		5
518					<i>Acer negundo</i>	18	4	Fair	lean to west	Preserve		3
519					<i>Acer negundo</i>	31	10	Fair		Preserve		6
520					<i>Acer negundo</i>	12	3	Fair	lean to SW	Preserve		2.5
521					<i>Ulmus americana</i>	25	8	Good		Preserve		5
522					<i>Ulmus americana</i>	25	10	Good	boundary tree, thru fence	Preserve		6
523	600446	4854287			<i>Cotoneaster sp.</i>	22	3	Poor	extensive rot	Preserve		2.5
524					<i>Quercus macrocarpa</i>	16	5	Fair		Preserve		3.5
525					<i>Acer negundo</i>	19	4	Fair		Preserve		3
526	600340	4854158			<i>Fraxinus pennsylvanica</i>	23	2	Dead	boundary tree, EAB	Preserve		2
527	600130	4853853			<i>Fraxinus pennsylvanica</i>	10	3	Poor	boundary tree, EAB, 90% dieback	Preserve		2.5
528					<i>Morus sp.</i>	38	5	Fair	2-stem union @ 0.4m, stems fused	Preserve		3.5
529					<i>Morus sp.</i>	38	5	Fair	stem decay	Preserve		3.5
534					<i>Ulmus americana</i>	10	3	Good		Remove	conflict w/ prop. dev. & grading	2.5
535					<i>Acer negundo</i>	15	4	Fair		Remove	conflict w/ prop. dev. & grading	3
536					<i>Ulmus americana</i>	42	4	Fair	2-stem, stem failure/pruned	Remove	conflict w/ prop. dev. & grading	3
537	600091	4853681			<i>Cotoneaster sp.</i>	10	3	Good		Remove	conflict w/ prop. dev. & grading	2.5
538					<i>Cotoneaster sp.</i>	28	5	Poor	boundary tree, multi-stem clump, split	Preserve		3.5
539					<i>Ulmus americana</i>	11	2.5	Good		Remove	conflict w/ prop. dev. & grading	2.25
540					<i>Quercus macrocarpa</i>	25	4	Fair	multi-stem clump	Remove	conflict w/ prop. dev. & grading	3
541					<i>Cotoneaster sp.</i>	25	4	Fair	multi-stem clump	Remove	conflict w/ prop. dev. & grading	3
542					<i>Cotoneaster sp.</i>	21	3	Fair	lean to south	Remove	conflict w/ prop. dev. & grading	2.5
543	599975	4853537			<i>Cotoneaster sp.</i>	98	18	Poor	multi-stem failure/rot, horizontal	Remove	condition	10
544					<i>Ulmus americana</i>	15	3	Fair	lean to NW	Remove	conflict w/ prop. dev. & grading	2.5
545					<i>Quercus macrocarpa</i>	84	18	Good		Remove	conflict w/ prop. dev. & grading	10
546					<i>Quercus macro</i>							

ID	Species	Size range DBH (cm)	Quantity of trees in each size range	No. of Poor or Dead trees in each size range excluding <10cm DBH (see Individual Tree Inventory)	General Condition of Group (Fair, Poor, Dead)	Comments	Action	Rationale for Removal	Compensation Trees Required for removed healthy trees
N36	Malus sp.	Apple	10	3	Fair	Remove	conflict w/ prop. dev. & grading	2.5	
452	<i>Acer saccharinum</i>	Silver Maple	65	12	Fair	lean to south	Preserve	7	
459	Malus sp.	Apple	12	2.5	Fair	multi-stem, stem decay	Preserve	4	
460	600127	4853861	<i>Fraxinus americana</i>	White Ash	22	5	Poor	EAB, stem decay	2.25
530	<i>Acer negundo</i>	Manitoba Maple	18	5	Fair	2-stem	Preserve	3.5	
531	Malus sp.	Apple	31	5	Fair	3-stem clump	Preserve	3.5	
532	<i>Acer negundo</i>	Manitoba Maple	25	5	Fair	3-stem	Preserve	3.5	
533	<i>Acer negundo</i>	Manitoba Maple	25	5	Fair	3-stem	Preserve	3.5	
539	<i>Quercus macrocarpa</i>	Bur Oak	32	7	Good		Preserve	4.5	
558	<i>Tilia americana</i>	Basswood	13	3	Fair	2-stems, 1 dead	Preserve	2.5	
559	599882	4853484	Malus sp.	Apple	37	10	Fair	3-stem, hollow/decay	3.5
563	Salix sp.	Willow	39	10	Fair		Preserve	6	
564	Salix sp.	Willow	50	12	Fair	contorted trunk	Preserve	7	
N1	<i>Acer saccharinum</i>	Silver Maple	14	4	Good		Preserve	3	
N2	<i>Acer saccharinum</i>	Silver Maple	35	12	Fair	multi-stem	Preserve	2.5	
N3	<i>Ulmus pumila</i>	Siberian Elm	55	7	Fair		Preserve	4.5	
N4	<i>Thuja occidentalis</i>	White Cedar	17	2	Fair	34 multi-stem in hedge (8-26 dbh range)	Preserve	2	
N5	<i>Acer negundo</i>	Manitoba Maple	37	10	Fair	multi-stem clump	Preserve	6	
N6	<i>Pinus strobus</i>	White Pine	28	5	Fair	multi-stem	Preserve	3.5	
N7	<i>Quercus rubra</i>	Red Oak	35	10	Good		Preserve	6	
N8	Malus sp.	Apple	53	7	Fair	multi-stem clump	Preserve	4.5	
N9	<i>Crataegus sp.</i>	Hawthorn	28	4	Fair	multi-stem clump	Preserve	2.5	
N10	Malus sp.	Apple	37	5	Fair	multi-stem clump	Preserve	3.5	
N11	Malus sp.	Apple	27	5	Fair		Preserve	3.5	
N12	<i>Quercus macrocarpa</i>	Bur Oak	15	2	Good		Preserve	2	
N13	<i>Quercus macrocarpa</i>	Bur Oak	11	2	Good		Preserve	3	
N14	<i>Ulmus americana</i>	White Elm	15	2	Good	among buckthorn	Preserve	2.5	
N15	<i>Tilia americana</i>	Basswood	20	4	Fair	boundary tree, multi-stem, decay	Preserve	3	
N16	<i>Ulmus americana</i>	White Elm	14	3	Fair	2-stems, 1 dead	Preserve	2.5	
N17	<i>Crataegus sp.</i>	Hawthorn	14	3	Fair	basal failure, partially uprooted	Preserve	2.5	
N18	<i>Ulmus americana</i>	White Elm	18	6	Fair		Preserve	4	
N19	<i>Ulmus americana</i>	White Elm	20	6	Fair		Preserve	4	
N20	<i>Quercus macrocarpa</i>	Bur Oak	10	3	Fair	50% dieback	Preserve	2.5	
N21	599872	4853415	<i>Quercus macrocarpa</i>	Bur Oak	10	3	Poor	basal failure, partially uprooted	2.5
N22	599859	4853400	<i>Crataegus sp.</i>	Hawthorn	10	3	Poor	multi-stem rot, suckering	2.5
N23	<i>Ulmus americana</i>	White Elm	40	8	Good		Preserve	5	
N24	<i>Quercus macrocarpa</i>	Bur Oak	14	5	Good		Preserve	3.5	
N25	<i>Crataegus sp.</i>	Hawthorn	28	4	Fair	multi-stem clump	Preserve	2.5	
N27	<i>Acer saccharinum</i>	Silver Maple	23	5	Good		Preserve	3.5	
N28	<i>Acer saccharinum</i>	Silver Maple	24	5	Good		Preserve	3.5	
N29	<i>Acer saccharinum</i>	Silver Maple	19	5	Good		Preserve	3.5	
N30	<i>Acer saccharinum</i>	Silver Maple	17	4	Good		Preserve	3	
N31	<i>Acer saccharinum</i>	Silver Maple	14	5	Good		Preserve	3.5	
N32	<i>Acer saccharinum</i>	Silver Maple	18	5	Good		Preserve	3.5	
N33	<i>Acer saccharinum</i>	Silver Maple	20	5	Good		Preserve	3.5	
N34	<i>Acer saccharinum</i>	Silver Maple	21	5	Good		Preserve	3.5	
N35	<i>Acer saccharinum</i>	Silver Maple	22	5	Good		Preserve	3.5	
N37	Malus sp.	Apple	13	3	Fair		Preserve	2.5	
N38	Populus sp.	Poplar	30	4	Good	boundary tree	Preserve	3	
N39	Populus sp.	Poplar	3	1	Good	3-stem clump	Preserve	3	
N40	599931	4853199	<i>Fraxinus pennsylvanica</i>	Green Ash	25	5	Dead	stem failure	3.5
N41	Populus sp.	Poplar	21	4	Good	2-stem	Preserve	3	
N42	Populus sp.	Poplar	37	7	Fair	2-stem union @ 1.1m, 1 stem pruned	Preserve	4.5	
N43	<i>Acer saccharinum</i>	Silver Maple	47	14	Fair		Preserve	6	
N44	<i>Acer saccharinum</i>	Silver Maple	50	15	Fair	2-stem	Preserve	8.5	
N45	Malus sp.	Apple	20	3	Good		Preserve	2.5	
N46	<i>Acer platanoides</i>	Norway Maple	26	5	Fair	50% of roots fill compaction by neighbour	Preserve	3.5	
N47	601263	485332	<i>Fraxinus pennsylvanica</i>	Green Ash	24	5	Dead	EAB	3.5
N48	601279	4853346	<i>Fraxinus pennsylvanica</i>	Green Ash	33	6	Dead	EAB, 3-stem clump	4
N49	601282	4853355	<i>Fraxinus pennsylvanica</i>	Green Ash	40	4	Poor	EAB, 3-stem clump	3
N50	<i>Acer platanoides</i>	Norway Maple	23	4	Good		Preserve	4	
N51	<i>Picea pungens glauca</i>	Blue Colorado Spruce	10	2	Good		Preserve	2	
N52	<i>Betula papyrifera</i>	White Birch	16	3	Fair		Preserve	2.5	
N53	Malus sp.	Apple	10	3	Good		Preserve	2.5	
N54	Malus sp.	Apple	14	3	Good		Preserve	2.5	
N55	Malus sp.	Apple	11	2.5	Good		Preserve	2.25	
N56	<i>Robinia pseudoacacia</i>	Black Locust	20	4	Fair	2-stem union @ 0.2m	Preserve	3	
N57	<i>Acer saccharinum</i>	Silver Maple	16	4	Good	2-stem union @ 0.6m	Preserve	3	
N58	Malus sp.	Apple	18	3	Good	2-stem union @ 1.0m	Preserve	3	
N59	<i>Picea abies</i>	Norway Spruce	30	6	Good		Preserve	4	
N60	<i>Picea abies</i>	Norway Spruce	25	6	Good		Preserve	4	
N61	<i>Picea abies</i>	Norway Spruce	23	6	Good		Preserve	4	
N62	<i>Picea abies</i>	Norway Spruce	16	4	Good		Preserve	3	
N63	<i>Picea abies</i>	Norway Spruce	24	5	Good		Preserve	3.5	
N64	<i>Picea abies</i>	Norway Spruce	15	4	Good		Preserve	3	
N65	<i>Picea abies</i>	Norway Spruce	23	5	Good		Preserve	3.5	
N66	<i>Picea abies</i>	Norway Spruce	20	5	Good		Preserve	4	
N67	<i>Picea abies</i>	Norway Spruce	20	5	Good		Preserve	3.5	
N68	<i>Picea abies</i>	Norway Spruce	18	4	Fair	lower branch dieback	Preserve	3	
N69	<i>Picea abies</i>	Norway Spruce	28	6	Good	top main leader missing	Preserve	4	
N70	<i>Picea abies</i>	Norway Spruce	22	6	Good		Preserve	4	
N71	<i>Picea abies</i>	Norway Spruce	30	6	Good		Preserve	4	
N72	<i>Picea abies</i>	Norway Spruce	26	6	Good		Preserve	4	
N73	<i>Picea abies</i>	Norway Spruce	28	6	Good		Preserve	4	
N74	<i>Picea abies</i>	Norway Spruce	30	6	Good		Preserve	4	
N75	<i>Picea abies</i>	Norway Spruce	11	4	Good		Preserve	3	
N76	<i>Picea abies</i>	Norway Spruce	25	5	Good		Preserve	3.5	
N77	<i>Picea abies</i>	Norway Spruce	13	4	Good		Preserve	3	
N78	<i>Picea abies</i>	Norway Spruce	10	3	Good		Preserve	2.5	
N79	<i>Picea abies</i>	Norway Spruce	15	3	Good		Preserve	2.5	
N80	<i>Picea abies</i>	Norway Spruce	14	3	Good		Preserve	2.5	
N81	<i>Picea abies</i>	Norway Spruce	13	3	Good		Preserve	2.5	
N82	<i>Picea abies</i>	Norway Spruce	12	3	Good		Preserve	2.5	
N83	<i>Picea abies</i>	Norway Spruce	14	4	Good		Preserve	3	
N84	<i>Picea abies</i>	Norway Spruce	10	3	Good		Preserve	2.5	
N85	<i>Picea abies</i>	Norway Spruce	11	3	Good		Preserve	2.5	
N86	<i>Picea abies</i>	Norway Spruce	11	3	Good		Preserve	2.5	
N87	<i>Picea abies</i>	Norway Spruce	20	5	Good		Preserve	3.5	
N88	<i>Picea abies</i>	Norway Spruce	14	4	Good		Preserve	3	
N89	<i>Picea abies</i>	Norway Spruce	10	3	Good		Preserve	2.5	
N90	<i>Picea abies</i>	Norway Spruce	15	4	Good		Preserve	3	
N91	<i>Picea abies</i>	Norway Spruce	16	4	Good		Preserve	3	
N92	<i>Picea abies</i>	Norway Spruce	19	5	Good		Preserve	3.5	
N93	<i>Picea abies</i>	Norway Spruce	15	5	Good		Preserve	3.5	
N94	<i>Picea abies</i>	Norway Spruce	13	4	Good		Preserve	3	
N95	<i>Picea abies</i>	Norway Spruce	16	4	Good		Preserve	3	
N96	<i>Picea abies</i>	Norway Spruce	15	4	Good		Preserve	3	
N97	<i>Picea abies</i>	Norway Spruce	17	5	Good		Preserve	3.5	
N98	<i>Picea abies</i>	Norway Spruce	12	4	Good		Preserve	3	
N99	<i>Picea abies</i>	Norway Spruce	18	5	Good		Preserve	3.5	
N100	<i>Picea abies</i>	Norway Spruce	10	3	Good		Preserve	2.5	
N101	<i>Picea abies</i>	Norway Spruce	15	5	Good		Preserve	3.5	
N102	<i>Picea abies</i>	Norway Spruce	14	5	Good		Preserve	3.5	
N103	<i>Picea abies</i>	Norway Spruce	23	6	Good		Preserve	4	
N104	<i>Picea abies</i>	Norway Spruce	18	4	Good		Preserve	3	
N105	<i>Picea abies</i>	Norway Spruce	21	5	Good		Preserve	3.5	
N106	<i>Picea abies</i>	Norway Spruce	21	5	Good		Preserve	3.5	
N107	<i>Picea abies</i>	Norway Spruce	16	5	Good		Preserve	3.5	
N108	<i>Picea abies</i>	Norway Spruce	10	4	Good		Preserve	3	
N109	<i>Picea abies</i>	Norway Spruce	25	6	Good		Preserve	4	
N109a	<i>Picea abies</i>	Norway Spruce	20	6	Good		Preserve	4	
N109b	<i>Picea abies</i>	Norway Spruce	14	5	Good		Preserve	3.5	
N109c	<i>Picea abies</i>	Norway Spruce	10	3	Good		Preserve	2.5	
N110	<i>Picea abies</i>	Norway Spruce	23	6	Good		Preserve	4	
N111	<i>Picea abies</i>	Norway Spruce	19	6	Good		Preserve	4	
N112	<i>Picea abies</i>	Norway Spruce	20	6	Good		Preserve	4	
N113	<i>Picea abies</i>	Norway Spruce	22	6	Good		Preserve	4	
N114	<i>Picea abies</i>	Norway Spruce	22	6	Good		Preserve	4	
N115	<i>Picea abies</i>	Norway Spruce	12	4	Good		Preserve	3	
N116	<i>Picea abies</i>	Norway Spruce	13	4	Good		Preserve	3	
N117	600769	4852589	<i>Picea abies</i>	Norway Spruce	14	4	Poor	leaning on N118, root plate failure	3
N118	<i>Picea abies</i>	Norway Spruce	16	5	Good		Preserve	3.5	
N119	<i>Picea abies</i>	Norway Spruce	14	5	Good		Preserve	3.5	
N120	<i>Picea abies</i>	Norway Spruce	15	5	Good		Preserve	3.5	
N121	<i>Picea abies</i>	Norway Spruce	12	4	Good		Preserve	3	
N122	<i>Picea abies</i>	Norway Spruce	12	4	Good		Preserve	3	
N123	<i>Picea abies</i>	Norway Spruce	23	5	Good		Preserve	3.5	
N124	<i>Picea abies</i>	Norway Spruce	24	5	Good		Preserve	3.5	
N125	<i>Picea abies</i>	Norway Spruce	12	4	Good		Preserve	3	
N126	<i>Picea abies</i>	Norway Spruce	21	5	Good		Preserve	3.5	
N127	<i>Picea abies</i>	Norway Spruce	16	5	Good		Preserve	3.5	
N128	<i>Picea abies</i>	Norway Spruce	15	5	Good		Preserve	3.5	
N129	<i>Picea abies</i>	Norway Spruce	19	5	Good		Preserve	3.5	
N130	<i>Picea abies</i>	Norway Spruce	11	4	Good		Preserve	3	

ID	Species	Size range DBH (cm)	Quantity of trees in each size range
----	---------	---------------------	--------------------------------------



KEY PLAN N.T.S. SUBJECT SITE

LEGEND

DRIFLINE

1200

STANDARD 1200mm HIGH SNOW FENCE SECURED TO T-BAR STAKES AT MIN. 2400mm O.C.

FINISHED GRADE

UNDISTURBED SOIL

SPECIFICATIONS FOR THE PROTECTION AND PRESERVATION OF EXISTING VEGETATION:

- PRIOR TO ISSUANCE OF THE GRADING AND SERVICING OR BUILDING PERMIT, ALL EXISTING TREES THAT ARE TO BE PRESERVED SHALL BE FULLY PROTECTED WITH HOARDING (IE SNOW FENCING) OUTSIDE THEIR DRIFLINES, OR AS DIRECTED THROUGH ADDITIONAL GOVERNING DOCUMENTS TO THE SATISFACTION OF THE TOWN.
- GROUPS OF TREES AND OTHER EXISTING PLANTINGS TO BE PROTECTED SHALL BE TREATED IN A LIKE MANNER WITH HOARDING AROUND THE ENTIRE CLUMPS.
- TREE PRESERVATION FENCE IS TO BE INSPECTED BY THE CONSULTING ARBORIST OR LANDSCAPE ARCHITECT AND APPROVED BY THE TOWN PRIOR TO CONSTRUCTION COMMENCING.
- SILTATION CONTROL FENCING MAY BE USED AS A TREE PRESERVATION FENCING SUBSTITUTE IF REQUIRED BY ENGINEERING AT THE DISCRETION OF THE TOWN.
- AREAS WITHIN PROTECTIVE FENCING SHALL REMAIN UNDISTURBED AND SHALL NOT BE USED FOR THE STORAGE OF BUILDING MATERIALS OR EQUIPMENT. NO CONTAMINANTS SHALL BE DUMPED OR FLUSHED WHERE FEEDER ROOTS OF TREES EXIST. NO GARBAGE OR BUILDING MATERIALS ARE TO BE PLACED ON OR AGAINST THE TREE PRESERVATION FENCE.
- PRUNE BRANCHES TO REMOVE DAMAGED LIMBS ONLY. DO NOT DAMAGE LEADERS. ALL CUTS OVER 20mm SHALL BE TREATED IN ACCORDANCE WITH APPROPRIATE HORTICULTURAL PRACTICES AS APPROVED BY THE TOWN. NO MORE THAN 20% OF THE TREE SHALL BE PRUNED UNLESS DIRECTED BY THE TOWN.
- CUTTING OF ROOTS OR CHANGING OF GRADES AROUND EXISTING TREES TO BE PRESERVED WILL NOT BE PERMITTED WITHOUT THE APPROVAL OF THE PUBLIC WORKS AND ENGINEERING DEPARTMENT.
- IF TREES ARE BEING ADVERSELY AFFECTED BY CONSTRUCTION, A WATERING AND FERTILIZING PROGRAM IS TO BE SET UP TO THE SATISFACTION OF THE TOWN.
- PRIOR TO FINAL APPROVAL, TREES THAT HAVE DIED OR HAVE BEEN DAMAGED BEYOND REPAIR PRIOR DURING OR POST CONSTRUCTION SHALL BE REMOVED AND REPLACED WITH TREES OF A SIZE AND SPECIES APPROVED BY THE TOWN, AT THE SOLE COST OF THE DEVELOPER.

TOWN OF CALEDON				APRD: C.C.	DATE: JUNE 08
3	STANDARD 707 NOW 606		JAN 18		
2	STANDARD No. 1125 NOW 707, NOTES EDIT		JUNE 08	DRAWN: abal	SCALE: NTS
1	NOTE NO. 9 ADDED		MARCH 08		
TREE PRESERVATION				STANDARD No. 606	
NO.	REVISION	APRD	DATE		

SPECIFICATIONS

A. General

The following Tree Preservation and Protection Measures will be undertaken to help eliminate and/or significantly reduce construction injury to all trees recommended for preservation. All temporary tree protection measures cited for retained trees must comply with the Town of Caledon Tree Protection Specifications and Details. Any variation from the standard tree protection measures must be approved in writing by the Town of Caledon.

B. Pre-Construction Phase

- Prior to construction, the trees to be preserved shall be protected with a Tree Protection Barrier. The barrier shall consist of 1.2m (4ft) high orange plastic snow fence wired to T-bars (see Town of Caledon Tree Preservation Fencing, STD 606).
- If applicable, attach a filter cloth 600mm high to the construction side of the hoarding to act as sediment control. Sediment control fencing shall meet or exceed OPSD-219.110, and be installed to the satisfaction of the Town of Caledon.
- All supports and bracing used to safely secure the barrier should be located outside the Tree Protection Zone (TPZ). All supports and bracing should minimize damage to roots.
- The TPZ fence is to be installed along the edge of the tree protection zones. This hoarding is to remain in place and remain in good condition throughout the entire duration of the project. Dismantling the tree protection barrier prior to approval by the Town of Caledon staff may constitute a contravention.
- The applicant shall notify the Town of Caledon and the consulting certified arborist or landscape architect to confirm that the tree protection barriers are in place.
- Where fill or excavated material must be temporarily located near a TPZ, a wooden barrier must be used to ensure no material enters the TPZ.
- Remove any garbage and foreign debris from the tree protection zones, daily.
- For the trees that were recommended for removal and/or crown pruning that are within the TPZ limits, these activities are to be performed by a qualified ISA certified arborist prior to the installation of the Tree Protection Zone barriers and prior to the commencement of any construction activities. Install the Tree Protection Zone barrier as per Tree Preservation Fencing, STD 606 at the limits shown on the tree inventory and protection plan after the tree removal, whichever is greater, and crown pruning activities are completed.
- A Tree Protection Zone sign must be mounted on all sides of the tree protection barrier for the duration of site construction. The sign should be a minimum of 40cm x 60cm and made of white gator board or equivalent material.
- The sign must be similar to the illustration shown below, or as directed by the Town of Caledon.

TREE PROTECTION ZONE

No work is permitted in the Tree Protection Zone

This includes construction works, grading, storage of trash or materials.

The tree protection barrier must not be removed without written authorization of the Town of Caledon.

11. All contractors and site visitors should be informed of the tree preservation and protection measures at a pre-construction meeting.

specifications continued on next panel...

TOWN OF CALEDON				APRD: B.B.	DATE: AUGUST 17
TREE PRESERVATION STANDARD NOTES - PART 1				DRAWN: B.M.	SCALE: NTS
NO.	REVISION	APRD	DATE	STANDARD No. 710	

SPECIFICATIONS continued from previous panel

C. During Construction Phase

- All areas within the TPZ shall remain undisturbed for the duration of construction. There will be no grade changes, dumping, and storage of any materials, structures or equipment within these areas. The Tree Protection Barrier must not be removed without the written authorization of the Town of Caledon.
- Minor grading works will be permitted at the edge of the preservation zone as required to correct localized depressions, and blend to existing grades. This work is to be undertaken under the direct supervision of an ISA certified arborist.
- A certified ISA arborist will undertake proper root pruning in accordance with acceptable arboriculture practices when and if roots of retained trees are to be exposed, damaged, or severed by construction work. The exposed roots will be backfilled with appropriate material as soon as possible to prevent desiccation. Root pruning prior to excavation will help prevent necessary damage to tree roots. The use of low pressure hydrovac to expose roots is recommended, at no additional cost.
- The Town of Caledon must be notified for all work that impacts the TPZ for temporary removal of a section of hoarding to gain access for fine grading or other works. All works are to be supervised by the Town of Caledon.
- No cables, wire or ropes of any kind shall be wrapped around or installed in trees to be preserved.
- No contaminants will be dumped or flushed in the TPZ areas or where feeder roots of trees exist (generally beyond the TPZ areas).
- Irrigate tree protection zones during drought conditions, June to September to reduce drought stress.
- Inspect the site daily to ensure hoarding is in place and in good condition. Inspect trees to monitor condition.

end of specifications

D. Post Construction Phase

- Following the completion of all site works including landscaping, and after review and approval by the Town of Caledon staff, the protective hoarding may be removed.
- After removal of the protective hoarding, the Tree Preservation Zones shall be inspected by the Town of Caledon staff. Any remaining dead, diseased, or hazardous limbs or trees are to be removed by an ISA certified arborist as directed by the consulting arborist or Town of Caledon staff.

TOWN OF CALEDON				APRD: B.B.	DATE: AUGUST 17
TREE PRESERVATION STANDARD NOTES - PART 2				DRAWN: B.M.	SCALE: NTS
NO.	REVISION	APRD	DATE	STANDARD No. 711	

Base Information

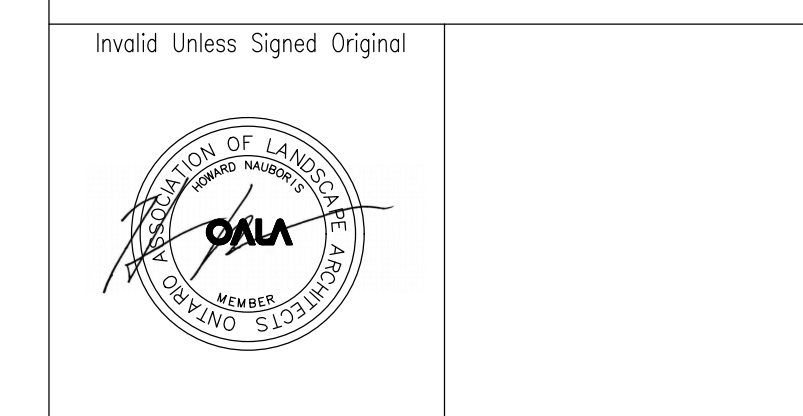
Lotting plan information received in digital format from Solmar and received January 15, 2025.

Survey information received in digital format from R-PE Surveying and received October 11, 2024.

Additional tree survey information received in digital format from R-PE Surveying and received January 13, 2025.

1	For Submission	SW	25	01	24	
No	Revision		By	Yr	Mo	Da

All drawings and designs are the property of Cosburn Nauboris Limited and may not be used or reproduced without permission. This drawing must not be scaled.



cosburn nauboris LTD landscape architects

1 905 940 4443
cosburnnauboris.ca

WILDFIELD VILLAGE - PARCELS 3, 4 & 5
TOWN OF CALEDON
REGION OF PEEL

TREE PRESERVATION DETAILS

Drawn by	SW	Scale	AS SHOWN	TP14
Checked by	GO	Plot Date	2025-01-27	
Approved by	HN	Project	2542	

Drawing No.