

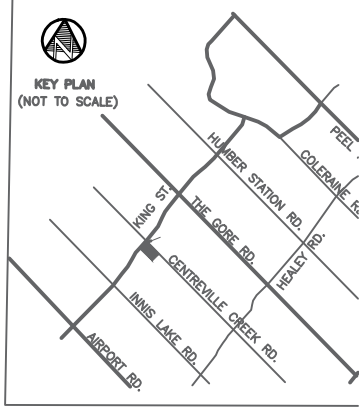
**SITE STATISTICS:**

AREA OF LOT	= 58,657.78 M <sup>2</sup>	PAVED AREA:	
BUILDING FOOTPRINT COVERAGE	= 17.16 %	PARKING LOT	= 5,800.93 M <sup>2</sup>
PARKING AREA:		DRIVEWAYS	= 9,760.78 M <sup>2</sup>
REGULAR PARKING	= 309	WALKWAYS	= 2,597.93 M <sup>2</sup>
ACCESSIBLE PARKING	= 14	ROADS	= 1,020.39 M <sup>2</sup>
DROP-OFF PARKING	= 6	TOTAL PAVED AREA	= 19,180.03 M <sup>2</sup>
DELIVERY PARKING	= 1	LANDSCAPE AREA	= 7,764.06 M <sup>2</sup>
TOTAL PARKING	= 330 PARKING SPACES	VACANT LAND(east part)	= 29,676.16 M <sup>2</sup>

# TOPOGRAPHIC SURVEY

for  
6939 KING ST.  
CALEDON, ONTARIO  
SCALE: 1:500  
0 5 10 15 Metres

**TOWN OF CALEDON  
PLANNING  
RECEIVED**  
Aug 22, 2022



**BUILDING PLAN:**

- MANDIR FLOOR PLAN: 476.50 sqm (5,136 sqft)
- ADMIN FLOOR AREA: 831.21 sqm (9,006 sqft)
- SAINT ASHRAM FLOOR AREA: 831.21 sqm (9,006 sqft)
- SABAH HALL FLOOR AREA: 1,002.8 sqm (10,755 sqft)

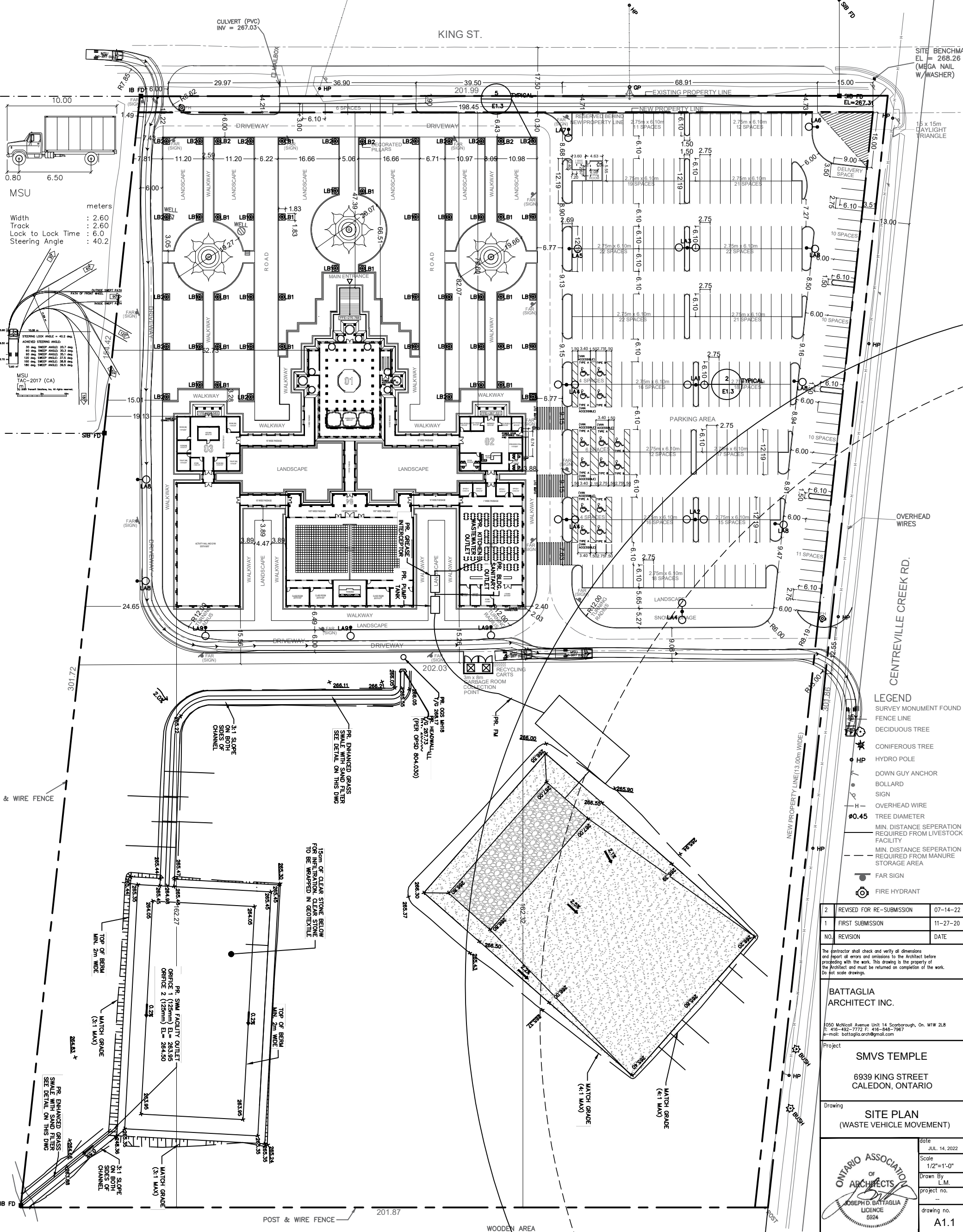
TOTAL FLOOR AREA: 3,141.72 sqm (33,903 sqft)

**BOUNDARY NOTE**  
PROPERTY BOUNDARY LINES SHOWN HEREON ARE FOR REFERENCE PURPOSE ONLY, COMPILED FROM EXISTING R-plan 43R-33132.

**DATUM**  
UTM-17 NAD83 2010.0 (ESTABLISHED BY RTK GPS AND VERIFIED WITH TWO COSINE HORIZONTAL CONTROL MONUMENTS : 04219920179 & 04219900040)

**BENCH MARK**  
ELEVATIONS SHOWN HERE ARE REFERRED TO A COSINE BENCHMARK No. 00819758057 HAVING AN ELEVATION OF 251.929 Metres.

**METRIC**  
DISTANCES AND COORDINATES SHOWN ON THIS PLAN ARE IN METRES AND CAN BE CONVERTED TO FEET BY DIVIDING BY 0.3048.



NO.	REVISION	DATE
2	REVISED FOR RE-SUBMISSION	07-14-22
1	FIRST SUBMISSION	11-27-20

The contractor shall check and verify all dimensions and report all errors and omissions to the Architect before proceeding with the work. This drawing is the property of the Architect and must be returned on completion of the work. Do not scale drawings.

**BATTAGLIA ARCHITECT INC.**  
1050 McNicoll Avenue Unit 14 Scarborough, On. M1W 2L8  
T: 416-462-7772 F: 416-548-7967  
E-mail: battaglia.arch@gmail.com

Project: **SMVS TEMPLE**  
6939 KING STREET  
CALEDON, ONTARIO

Drawing: **SITE PLAN (WASTE VEHICLE MOVEMENT)**

date: JUL 14, 2022  
Scale: 1/2"=1'-0"  
Drawn By: L.M.  
Project no.:  
drawing no.: **A.1.1**