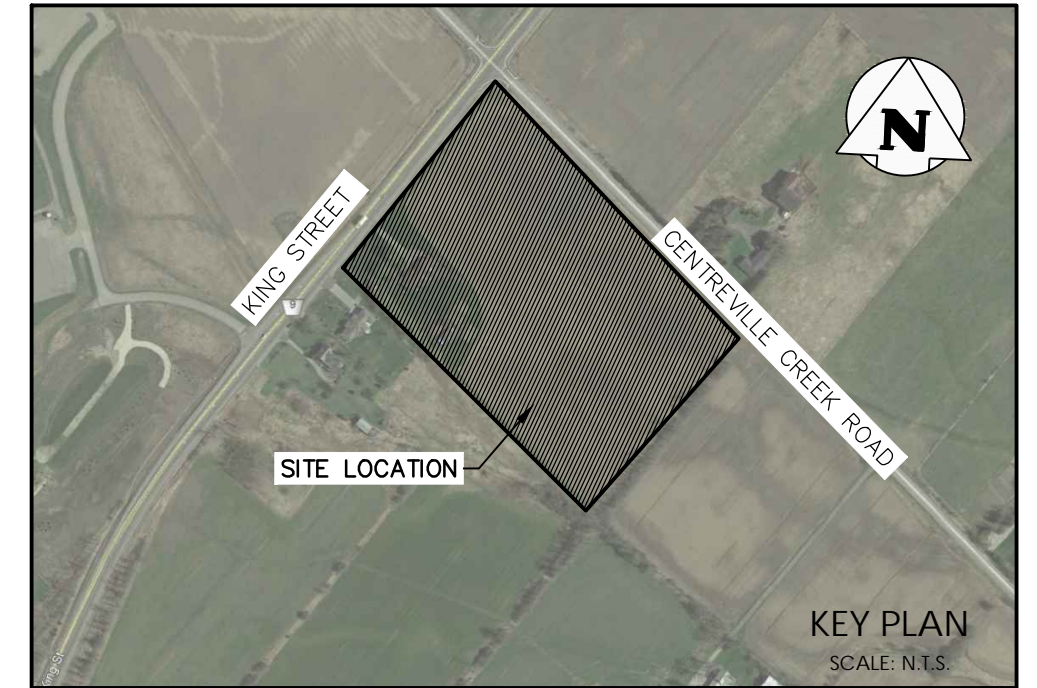


**TOWN OF CALEDON
PLANNING
RECEIVED**

Aug 22, 2022



LEGEND

- PROPERTY LINE
- - - EXISTING CONTOUR (0.5m)
- - - EXISTING CONTOUR (1.0m)
- - - EXISTING GRADE
- - - EXISTING FENCE
- TRCA REGULATED WATERCOURSE
- TRCA REGULATED MEANDER BELT
- DELINEATED WETLAND LIMIT (BY PINCHIN)
- 10.0m WETLAND BUFFER
- EXISTING DITCH
- EXISTING TREE
- EXISTING OVERLAND FLOW DIRECTION
- STORM DRAINAGE CATCHMENT
- ID
- AREA (ha) | RUNOFF COEFFICIENT

NOT FOR CONSTRUCTION



1	ISSUED FOR SECOND SUBMISSION	2022/JUN/17
0	ISSUED FOR FIRST SUBMISSION	2020/DEC/23
No.	ISSUE / REVISION	YYYY/MM/DD

ELEVATION NOTE:
ELEVATIONS SHOWN ON THIS PLAN ARE DERIVED FROM A COSINE BENCHMARK No. 00819758057
ELEVATION = 251.929m

SURVEY NOTES:
SURVEY COMPLETED BY P&C SURVEYING INC. (2019/DEC/06)
REFERENCE No.: 2019-1206
BEARINGS ARE UTM GRID, DERIVED FROM RTN OBSERVATIONS
UTM ZONE 17, NAD83 (GSR) (2010.0)
DISTANCES ARE GROUND AND CAN BE CONVERTED TO GRID BY MULTIPLYING BY THE COMBINED SCALE FACTOR OF 0.9996781

SITE PLAN NOTES:
DESIGN ELEMENTS ARE BASED ON SITE PLAN BY BATTAGLIA ARCHITECT INC.
DRAWING No.: A1, REV 2 (2022/MAY/31)

DRAWING NOTES:
THIS DRAWING IS THE EXCLUSIVE PROPERTY OF C.F. CROZIER & ASSOCIATES INC. AND THE REPRODUCTION OF ANY PART OF IT WITHOUT PRIOR WRITTEN CONSENT OF THIS OFFICE IS STRICTLY PROHIBITED.
THE CONTRACTOR SHALL VERIFY ALL DIMENSIONS, LEVELS, AND DATUMS ON SITE AND REPORT ANY DISCREPANCIES OR OMISSIONS TO THIS OFFICE PRIOR TO CONSTRUCTION.
THIS DRAWING IS TO BE READ AND UNDERSTOOD IN CONJUNCTION WITH ALL OTHER PLANS AND DOCUMENTS APPLICABLE TO THIS PROJECT. DO NOT SCALE THIS DRAWING.
ALL EXISTING UNDERGROUND UTILITIES TO BE VERIFIED IN THE FIELD BY THE CONTRACTOR PRIOR TO CONSTRUCTION.

Project
**6939 KING STREET
TOWN OF CALEDON
REGION OF PEE**

Drawing
PRE-DEVELOPMENT DRAINAGE PLAN

CROZIER CONSULTING ENGINEERS
2800 High Point Drive
Suite 100
Millton, ON L9T 6P4
905-875-0026 T
905-875-4915 F
www.cfcrozier.ca

Drawn	A.S.	Design	A.S.	Project No.	1990-5787	
Check	K.R./R.A.	Check	K.R./R.A.	Scale	1:500	
					Dwg.	FIG. 1

