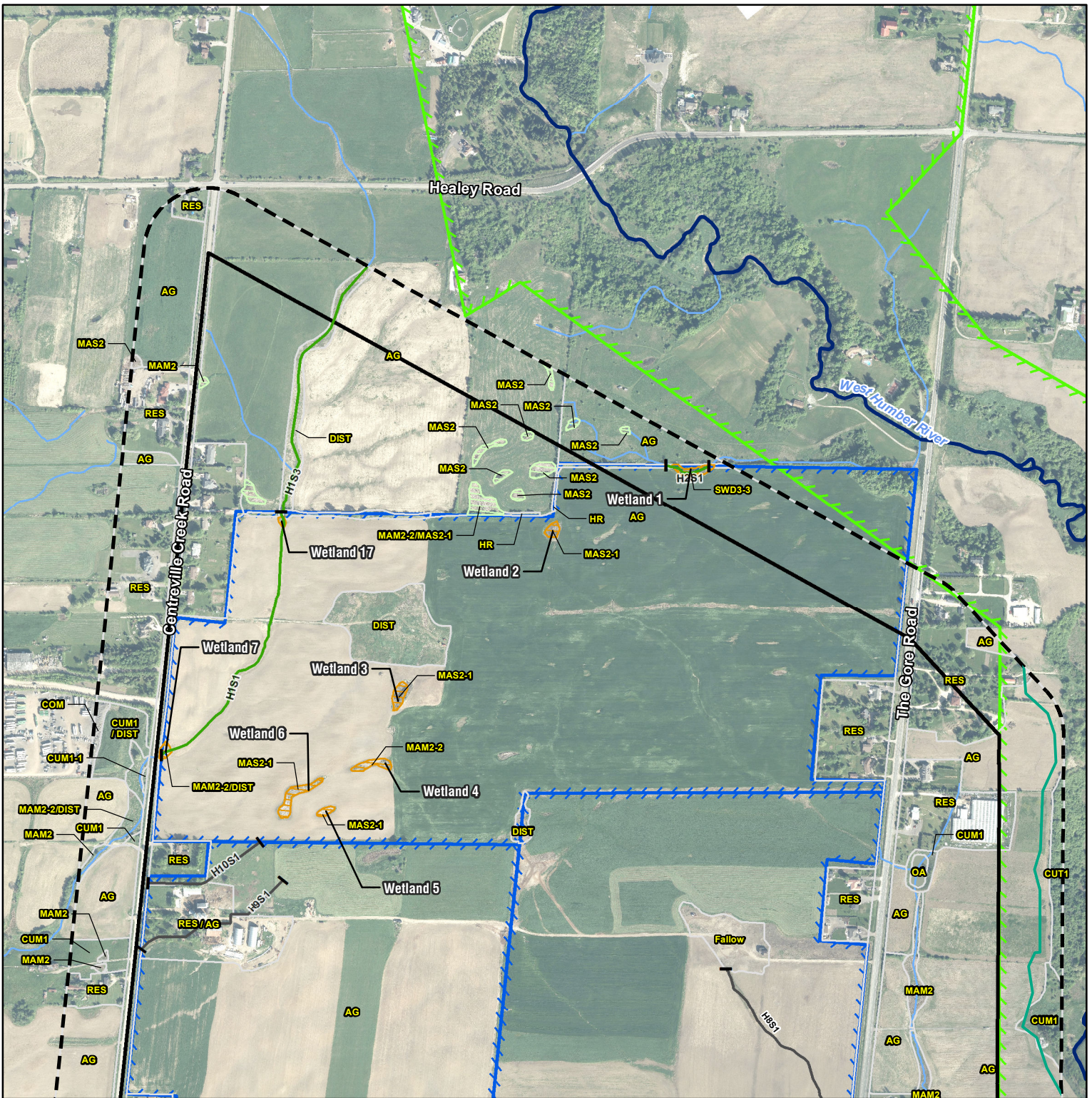

APPENDIX B

SECTION 2: NATURAL HERITAGE FEATURES AND HAZARDS

APPENDIX B1

FIGURES



Project 2100463

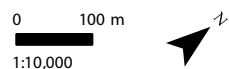
NOTES:
 1. Coordinate System: NAD 1983 UTM Zone 17N.
 2. Base features produced under license with the Ontario Ministry of Natural Resources and Forestry © Queen's Printer for Ontario, 2025; © Toronto Region Conservation Authority, 2021.
 3. Orthoimagery © First Base Solutions, 2021. Imagery taken in 2020.

* Non-participating lands were assessed through air photo interpretation to the ELC Ecosite level.

- Legend**
- Wildfield Secondary Plan Area
 - Adjacent 120m
 - Participating Landowner
 - Greenbelt Natural Heritage System
 - Ecological Land Classification*
 - Potential Watercourse or Headwater Drainage Feature
 - West Humber River
 - Preliminary Long Term Stable Top of Slope (GEI Consultants Ltd.)
 - Significant Woodland
 - Staked Limits (Sept 20, 2024)**
 - Wetland Staked by TRCA and GEI
 - Dripline - CUW1 (GEI)
 - Headwater Drainage Feature**
 - Management Recommendations**
 - No Management Required
 - Wetland Evaluation (GEI Consultants Ltd.)**
 - Significant Wetland
 - Other Wetland
 - Unevaluated Wetland
 - Significant Wildlife Habitat**
 - Turtle Overwintering Area
 - Species of Conservation Concern (Terrestrial Crayfish)
 - Species of Conservation Concern (Wood Thrush)

- ELC LEGEND**
- AG, Agricultural
 - COM, Commercial
 - COM1 / DIST, Mineral Cultural Meadow/Disturbed
 - COM1 / MAM2, Mineral Cultural Meadow/Mineral Meadow Marsh
 - COM1 / OA, Mineral Cultural Meadow/Open Aquatic
 - COM1, Mineral Cultural Meadow
 - COM1 - 1 (unwood), Mineral Cultural Meadow
 - COP1, Coniferous Plantation
 - CUT1, Mineral Cultural Thicket
 - COM1, Mineral Cultural Woodland
 - DIST / COM1, Disturbed/Mineral Cultural Meadow
 - DIST, Disturbed
 - Drain, Drain
 - ROC, Coniferous Forest
 - ROC2-2, Dry - Fresh White Cedar Coniferous Forest
 - ROC2-1, Fresh White Cedar Coniferous Forest
 - FOO7, Fresh-Mass Lowland Deciduous Forest
 - ROM, Mixed Forest
 - Fallow, Fallow
 - HR, Hedgepole
 - Lawn, Lawn
 - MA, Marsh
 - MAM2 / DIST, Mineral Meadow Marsh / Disturbed
 - MAM2 / Drain, Mineral Meadow Marsh / Drain
 - MAM2, Mineral Meadow Marsh
 - MAM2-1B, Fresh Mineral Meadow Marsh
 - MAM2-2, Reed Canary Grass Mineral Meadow Marsh
 - MAM2-2/DIST, Reed-canary Grass Mineral Meadow Marsh/Disturbed
 - MAM2-2/MAS2-1, Reed Canary Grass Mineral Meadow Marsh/Cattail Mineral Shallow Marsh
 - MAS2, Mineral Shallow Marsh
 - MAS2-1, Cattail Mineral Shallow Marsh
 - OA, Open Aquatic
 - RES, Residential/Cultural
 - RES, Residential
 - SA, Shallow Aquatic
 - SWO3-2, Silver Maple Mineral Deciduous Swamp
 - SWO3-3, Swampy Maple Mineral Deciduous Swamp
 - TDM2-4, Buckthorn Deciduous Shrub Thicket

Wildfield Local Subwatershed Study
 Wildfield Village Landowners Group Inc.
 Figure 2.1
 Observed Natural
 Heritage Features





Project 2100463

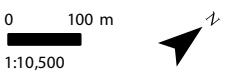
NOTES:
 1. Coordinate System: NAD 1983 UTM Zone 17N.
 2. Base features produced under license with the Ontario Ministry of Natural Resources and Forestry © Queen's Printer for Ontario, 2025; © Toronto Region Conservation Authority, 2021.
 3. Orthoimagery © First Base Solutions, 2021.
 Imagery taken in 2020.

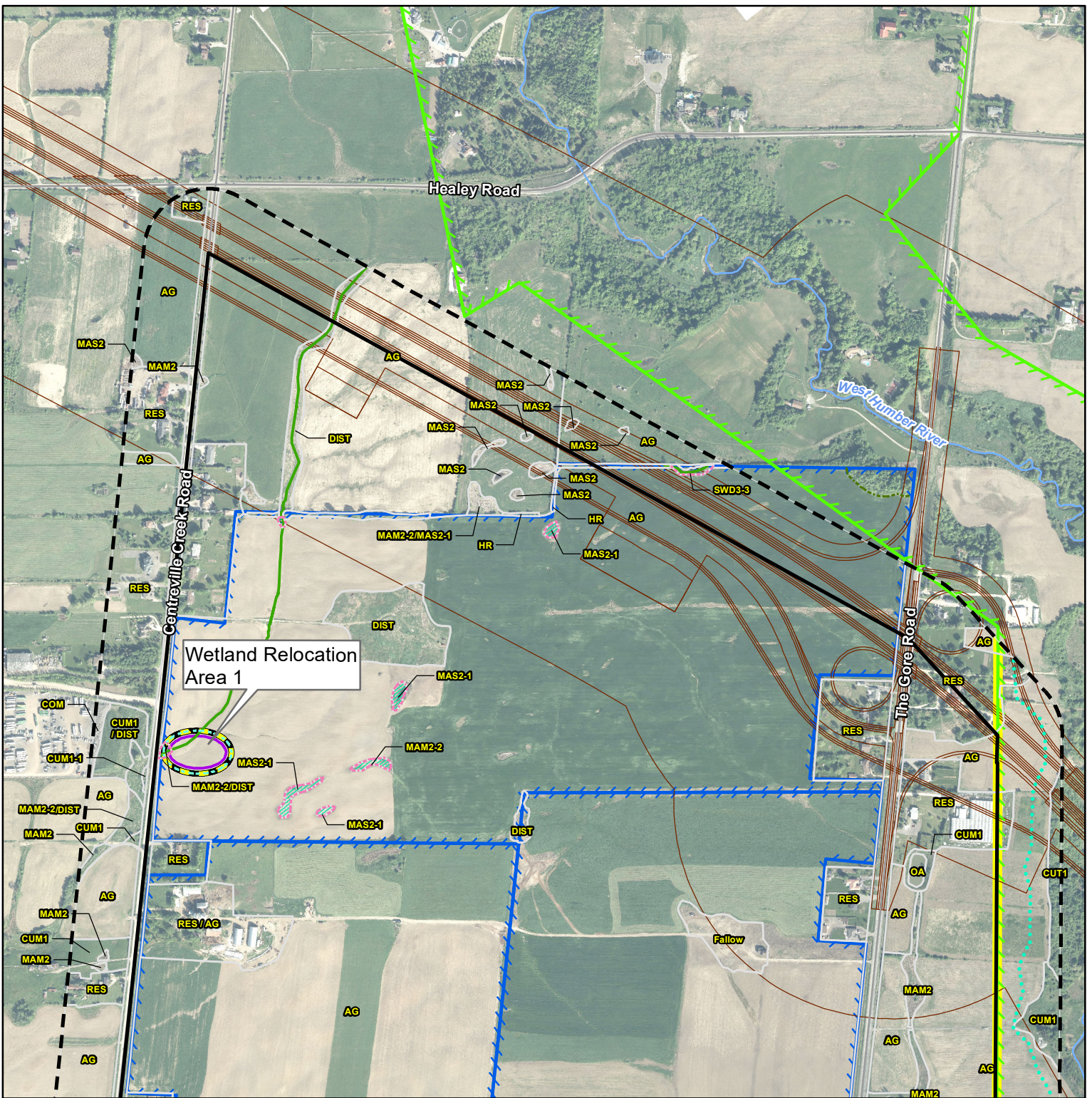
* Non-participating lands were assessed through air photo interpretation to the ELC Ecosite level.

- Legend**
- Wildfield Secondary Plan Area
 - Adjacent 120m
 - Participating Landowner
 - Greenbelt Natural Heritage System
 - Ecological Land Classification*
 - Watercourse (GEI Consultants Ltd.)
 - Potential Watercourse or Headwater Drainage Feature
 - West Humber River
 - Preliminary Long Term Stable Top of Slope (GEI Consultants Ltd.)
 - Meander Belt (GEI)
 - Significant Woodland
 - Staked Limits (Sept 20, 2024)
 - Wetland Staked by TRCA and GEI
 - Dipline - CUW1 (GEI)
 - Headwater Drainage Feature
 - Management Recommendations
 - Map Management Required
 - Wetland Evaluation (GEI Consultants Ltd.)
 - Significant Wetland
 - Other Wetland
 - Unevaluated Wetland
 - Fish Habitat
 - Fish Observation Location
 - Fish Habitat (Watercourse)
 - Significant Wildlife Habitat
 - Turtle Overwintering Area
 - Species of Conservation Concern (Terrestrial/Crayfish)
 - Species of Conservation Concern (Wood Thrush)

- ELC LEGEND**
- AG, Agricultural
 - COM, Commercial
 - COM1 / DIST, Mineral Cultural Meadow/Disturbed
 - COM1 / MAM2, Mineral Cultural Meadow/Mineral Meadow Marsh
 - COM1 / OA, Mineral Cultural Meadow/Open Aquatic
 - COM1, Mineral Cultural Meadow
 - COM1-1 (mowed), Mineral Cultural Meadow
 - COP, Coniferous Plantation
 - CUT1, Mineral Cultural Thicket
 - COM1, Mineral Cultural Woodland
 - DIST / COM1, Disturbed/Mineral Cultural Meadow
 - DIST, Disturbed
 - Drain, Drain
 - ROC, Coniferous Forest
 - FOC2-2, Dry - Fresh White Cedar Coniferous Forest
 - FOC7, Fresh-Moss Lowland Deciduous Forest
 - FORM, Mixed Forest
 - Fallow, Fallow
 - HR, Hedgerow
 - Lawn, Lawn
 - MA, Marsh
 - MAM2 / DIST, Mineral Meadow Marsh / Disturbed
 - MAM2 / Drain, Mineral Meadow Marsh / Drain
 - MAM2, Mineral Meadow Marsh
 - MAM2-10, Fish Mineral Meadow Marsh
 - MAM2-2, Reed Canary Grass Mineral Meadow Marsh
 - MAM2-2/DIST, Reed-canary Grass Mineral Meadow Marsh/Disturbed
 - MAM2-2/MAM2-1, Reed Canary Grass Mineral Meadow Marsh/Cattail Mineral Shallow Marsh
 - MAM2, Mineral Shallow Marsh
 - OA, Open Aquatic
 - RES / AG, Residential/Agricultural
 - RES, Residential
 - RES, Shallow Aquatic
 - SA, Shallow Aquatic
 - SWO3-2, Silver Maple Mineral Deciduous Swamp
 - SWO3-3, Swamp Maple Mineral Deciduous Swamp
 - THDM2-4, Buckthorn Deciduous Shrub Thicket

Wildfield Local Subwatershed Study
 Wildfield Village Landowners Group Inc.
Figure 2.1
 Observed Natural Heritage Features





Project 2100463

NOTES:
 1. Coordinate System: NAD 1983 UTM Zone 17N.
 2. Base features produced under license with the Ontario Ministry of Natural Resources and Forestry © Queen's Printer for Ontario, 2025; © Toronto Region Conservation Authority, 2025.
 3. Orthoimagery © First Base Solutions, 2025. Imagery taken in May/June, 2020.

*The Wildfield Village Study area participating lands were ground-truthed to the ELC Vegetation Type level. Non-participating properties were assessed through air photo interpretation to the ELC Ecosite level.

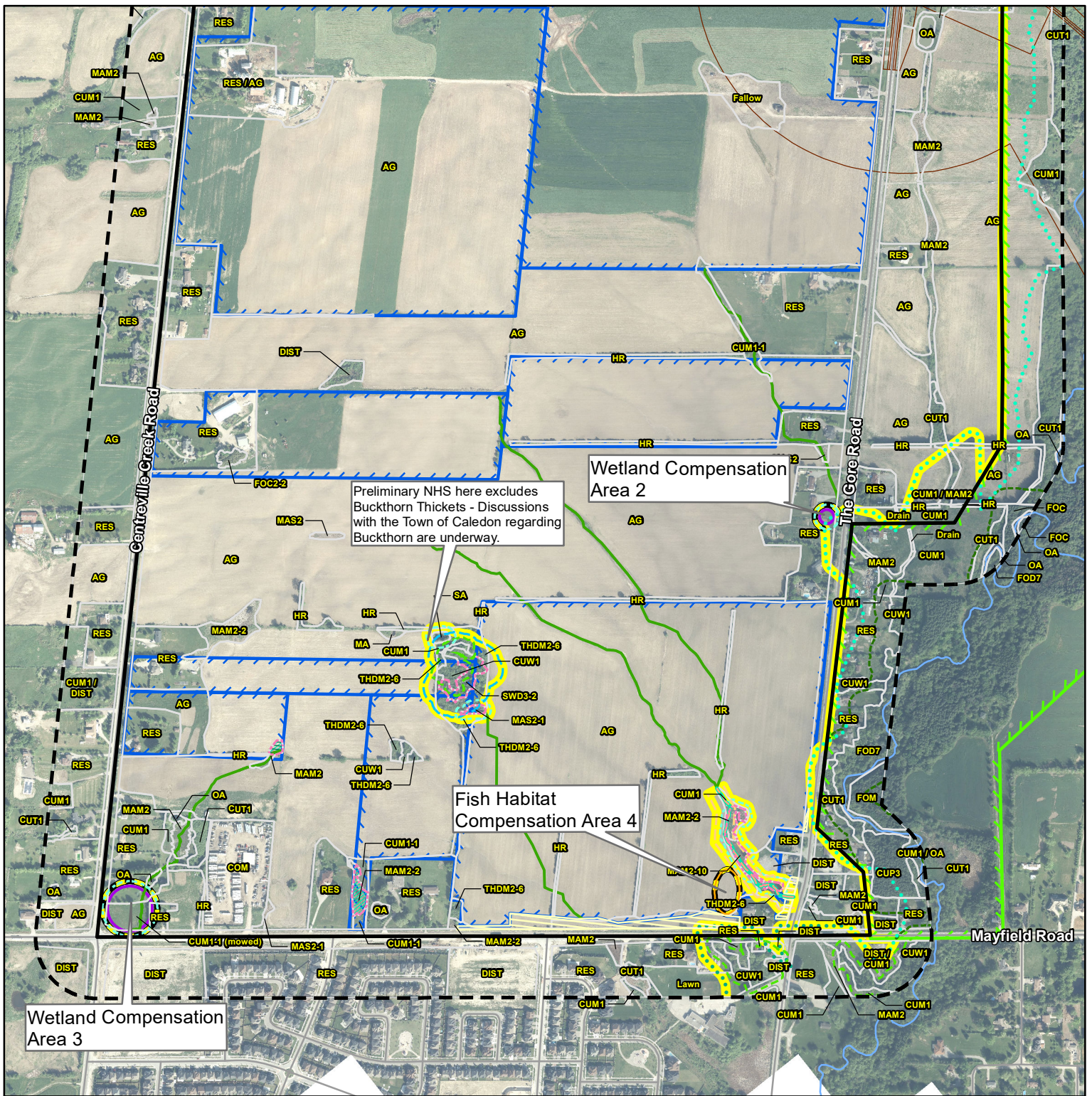
Legend	
	Wildfield Secondary Plan Area
	Adjacent 120m
	Participating Landowner
	Ecological Land Classification *
	Waterscourse (TRCA)
	Approximate Highway 413 Alignment
	Greenbelt Natural Heritage System
Wetlands for Removal	
	Total Wetlands Proposed for Removal (0.00ha)
	Conceptual Wetland
	Compensation or Relocation area (Size and Location to be Determined)
	Conceptual Fish Habitat Compensation (Wetland creation area, Size and Location to be Determined)
	Significant Wetland + 30 metres
	Other Wetland + 10m
	Woodland + 10 metres
	Preliminary Long Term Stable Top of Slope (Significant Valleyland) + 15 metres (GEI Consultants Ltd.)
	Wetland Staked by TRCA and GEI on November 7, 2023 and September 20, 2024
	Deline Staked by TRCA and GEI on November 7, 2023
Headwater Drainage Feature	
Management Recommendations	
	Mitigation
	Preliminary Natural Heritage System
	Preliminary Natural Heritage System (Conceptual Compensation/Relocation Area)

Wildfield Local Subwatershed Study
 Wildfield Village Landowners Group Inc.

Figure 2.2 Natural Heritage Constraints and Opportunities

0 100 m
 1:10,000





Project 2100463

- NOTES:**
 1. Coordinate System: NAD 1983 UTM Zone 17N.
 2. Base features produced under license with the Ontario Ministry of Natural Resources and Forestry © Queen's Printer for Ontario, 2025; © Toronto Region Conservation Authority, 2025.
 3. Orthoimagery © First Base Solutions, 2025. Imagery taken in May/June, 2020.

* The Wildfield Village Study area participating lands were ground-truthed to the ELC Vegetation Type level. Non-participating properties were assessed through air photo interpretation to the ELC Ecosite level.

Legend

Wildfield Secondary Plan Area
 Adjacent 120m
 Participating Landowner
 Road Easement
 Ecological Land Classification *
 Watercourse (TRCA)
 Watercourse (GEE)
 Approximate Highway 413 Alignment
 Greenbelt Natural Heritage System

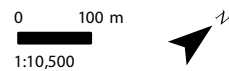
Wetlands for Removal
 Total Wetlands Proposed for Removal (0.68ha)
 Conceptual Wetland Compensation or Relocation Area (Size and Location to be Determined)
 Conceptual Fish Habitat Compensation (Wetland creation area. Size and Location to be Determined)
 Significant Wetland + 30 metres
 Other Wetland + 10m
 Meander Belt + 10 metres (GEE)
 Woodlands + 10 metres
 Significant Woodlands + 30 metres

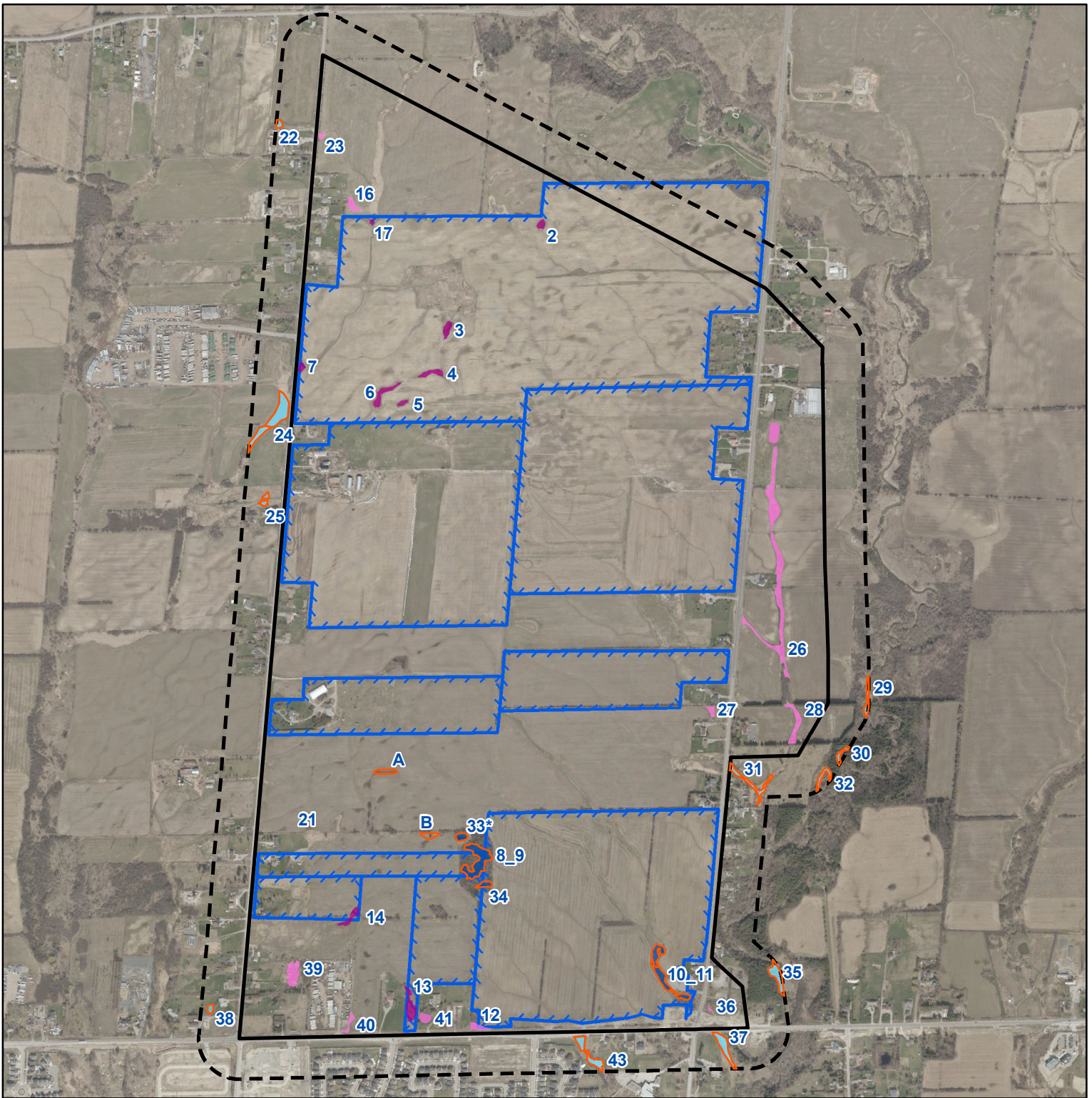
Headwater Drainage Feature

Management Recommendations
 Mitigation
 Preliminary Natural Heritage System
 Preliminary Natural Heritage System (Conceptual Compensation/Relocation Area)

RES	Residential
AG	Agriculture
MAM2	Municipal Medium Density Residential
CUM1	Municipal General Use
MAM2-2	Municipal Medium Density Residential - 2nd Phase
HR	Highway Right of Way
THDM2-6	Thick Dense Mature Forest
SWD3-2	Sloped Wooded
MAS2-1	Municipal Medium Density Residential - 1st Phase
MAS2-4	Municipal Medium Density Residential - 4th Phase
MA	Municipal
CUM1-1	Municipal General Use - 1st Phase
CUW1	Community Wooded
CUW1-1	Community Wooded - 1st Phase
CUW1-2	Community Wooded - 2nd Phase
CUW1-3	Community Wooded - 3rd Phase
CUW1-4	Community Wooded - 4th Phase
CUW1-5	Community Wooded - 5th Phase
CUW1-6	Community Wooded - 6th Phase
CUW1-7	Community Wooded - 7th Phase
CUW1-8	Community Wooded - 8th Phase
CUW1-9	Community Wooded - 9th Phase
CUW1-10	Community Wooded - 10th Phase
CUW1-11	Community Wooded - 11th Phase
CUW1-12	Community Wooded - 12th Phase
CUW1-13	Community Wooded - 13th Phase
CUW1-14	Community Wooded - 14th Phase
CUW1-15	Community Wooded - 15th Phase
CUW1-16	Community Wooded - 16th Phase
CUW1-17	Community Wooded - 17th Phase
CUW1-18	Community Wooded - 18th Phase
CUW1-19	Community Wooded - 19th Phase
CUW1-20	Community Wooded - 20th Phase
CUW1-21	Community Wooded - 21st Phase
CUW1-22	Community Wooded - 22nd Phase
CUW1-23	Community Wooded - 23rd Phase
CUW1-24	Community Wooded - 24th Phase
CUW1-25	Community Wooded - 25th Phase
CUW1-26	Community Wooded - 26th Phase
CUW1-27	Community Wooded - 27th Phase
CUW1-28	Community Wooded - 28th Phase
CUW1-29	Community Wooded - 29th Phase
CUW1-30	Community Wooded - 30th Phase
CUW1-31	Community Wooded - 31st Phase
CUW1-32	Community Wooded - 32nd Phase
CUW1-33	Community Wooded - 33rd Phase
CUW1-34	Community Wooded - 34th Phase
CUW1-35	Community Wooded - 35th Phase
CUW1-36	Community Wooded - 36th Phase
CUW1-37	Community Wooded - 37th Phase
CUW1-38	Community Wooded - 38th Phase
CUW1-39	Community Wooded - 39th Phase
CUW1-40	Community Wooded - 40th Phase
CUW1-41	Community Wooded - 41st Phase
CUW1-42	Community Wooded - 42nd Phase
CUW1-43	Community Wooded - 43rd Phase
CUW1-44	Community Wooded - 44th Phase
CUW1-45	Community Wooded - 45th Phase
CUW1-46	Community Wooded - 46th Phase
CUW1-47	Community Wooded - 47th Phase
CUW1-48	Community Wooded - 48th Phase
CUW1-49	Community Wooded - 49th Phase
CUW1-50	Community Wooded - 50th Phase
CUW1-51	Community Wooded - 51st Phase
CUW1-52	Community Wooded - 52nd Phase
CUW1-53	Community Wooded - 53rd Phase
CUW1-54	Community Wooded - 54th Phase
CUW1-55	Community Wooded - 55th Phase
CUW1-56	Community Wooded - 56th Phase
CUW1-57	Community Wooded - 57th Phase
CUW1-58	Community Wooded - 58th Phase
CUW1-59	Community Wooded - 59th Phase
CUW1-60	Community Wooded - 60th Phase
CUW1-61	Community Wooded - 61st Phase
CUW1-62	Community Wooded - 62nd Phase
CUW1-63	Community Wooded - 63rd Phase
CUW1-64	Community Wooded - 64th Phase
CUW1-65	Community Wooded - 65th Phase
CUW1-66	Community Wooded - 66th Phase
CUW1-67	Community Wooded - 67th Phase
CUW1-68	Community Wooded - 68th Phase
CUW1-69	Community Wooded - 69th Phase
CUW1-70	Community Wooded - 70th Phase
CUW1-71	Community Wooded - 71st Phase
CUW1-72	Community Wooded - 72nd Phase
CUW1-73	Community Wooded - 73rd Phase
CUW1-74	Community Wooded - 74th Phase
CUW1-75	Community Wooded - 75th Phase
CUW1-76	Community Wooded - 76th Phase
CUW1-77	Community Wooded - 77th Phase
CUW1-78	Community Wooded - 78th Phase
CUW1-79	Community Wooded - 79th Phase
CUW1-80	Community Wooded - 80th Phase
CUW1-81	Community Wooded - 81st Phase
CUW1-82	Community Wooded - 82nd Phase
CUW1-83	Community Wooded - 83rd Phase
CUW1-84	Community Wooded - 84th Phase
CUW1-85	Community Wooded - 85th Phase
CUW1-86	Community Wooded - 86th Phase
CUW1-87	Community Wooded - 87th Phase
CUW1-88	Community Wooded - 88th Phase
CUW1-89	Community Wooded - 89th Phase
CUW1-90	Community Wooded - 90th Phase
CUW1-91	Community Wooded - 91st Phase
CUW1-92	Community Wooded - 92nd Phase
CUW1-93	Community Wooded - 93rd Phase
CUW1-94	Community Wooded - 94th Phase
CUW1-95	Community Wooded - 95th Phase
CUW1-96	Community Wooded - 96th Phase
CUW1-97	Community Wooded - 97th Phase
CUW1-98	Community Wooded - 98th Phase
CUW1-99	Community Wooded - 99th Phase
CUW1-100	Community Wooded - 100th Phase

Wildfield Local Subwatershed Study
 Wildfield Village Landowners Group Inc.
 Figure 2.2
 Natural Heritage Constraints and Opportunities





Project 2100463

NOTES:
 1. Coordinate System: NAD 1983 UTM Zone 17N.
 2. Base features produced under license with the Ontario Ministry of Natural Resources and Forestry © Queen's Printer for Ontario, 2025.
 3. Orthoimagery © First Base Solutions, 2025. Imagery taken in 2022.

Legend

- Wildfield Secondary Plan Area
- Adjacent 120m
- Participating Landowner
- Wetlands for Risk Evaluation
- Wetland to be Retained (Participating Lands)
- Wetland to be Removed (Participating Lands)
- Wetland on 120m Adjacent Lands
- Wetlands Anticipated to be Removed** (Non-participating Lands)

Wetland Category	Wetland Number
Wetlands to be Retained (Participating Lands)	8-9, 10-11, 33* (non-participant), 34
Wetlands to be Removed (Participating Lands)	2, 3, 4, 5, 6, 7, 13, 14, 17
Wetlands on 120m Adjacent Lands	22, 24, 25, 29, 30, 31, 32, 35, 37, 38, 43
Wetlands Anticipated to be Removed** (Non-participating Lands)	12, 16, 21, 23, 26, 27, 28, 36, 39, 40, 41, A, B

**Wetlands on non-participating lands consist of small (usually much smaller than 0.5 ha), secluded features in an agricultural and residential land use setting, generally comprised of Meadow Marsh and Shallow Marsh wetland types. Wetlands on non-participating lands are anticipated to be removed, pending future studies.

Wildfield Local Subwatershed Study
 Wildfield Village Landowners Group Inc.

Figure 2.3 Wetland Water Balance Risk Evaluation

