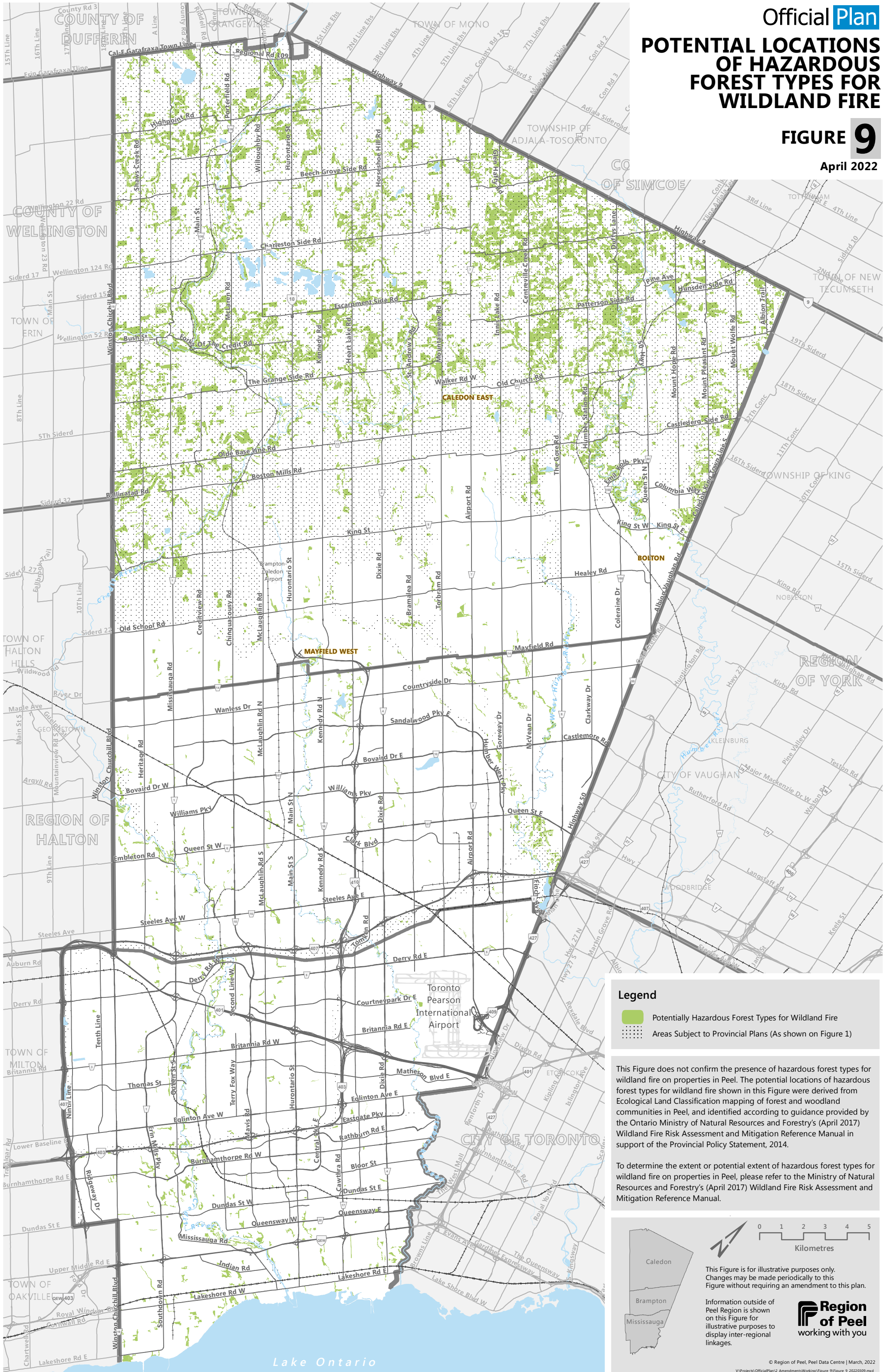


POTENTIAL LOCATIONS OF HAZARDOUS FOREST TYPES FOR WILDLAND FIRE

FIGURE 9

April 2022



Legend

- Potentially Hazardous Forest Types for Wildland Fire
- Areas Subject to Provincial Plans (As shown on Figure 1)

This Figure does not confirm the presence of hazardous forest types for wildland fire on properties in Peel. The potential locations of hazardous forest types for wildland fire shown in this Figure were derived from Ecological Land Classification mapping of forest and woodland communities in Peel, and identified according to guidance provided by the Ontario Ministry of Natural Resources and Forestry's (April 2017) Wildland Fire Risk Assessment and Mitigation Reference Manual in support of the Provincial Policy Statement, 2014.

To determine the extent or potential extent of hazardous forest types for wildland fire on properties in Peel, please refer to the Ministry of Natural Resources and Forestry's (April 2017) Wildland Fire Risk Assessment and Mitigation Reference Manual.

0 1 2 3 4 5
Kilometres

This Figure is for illustrative purposes only. Changes may be made periodically to this Figure without requiring an amendment to this plan.

Information outside of Peel Region is shown on this Figure for illustrative purposes to display inter-regional linkages.